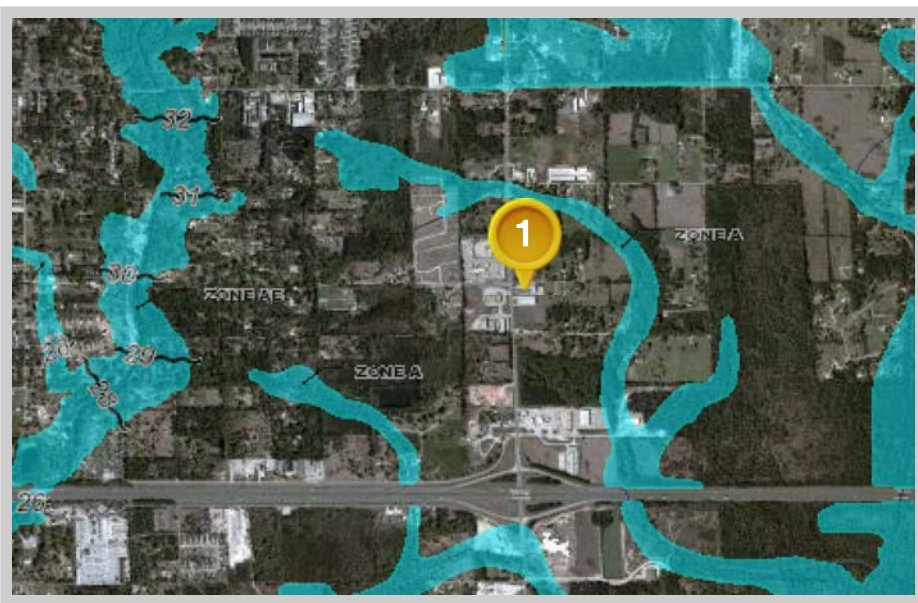


Louisiana Flood Map

30.4865,-90.4141



Visible Layers

Effective FIRM

Bing Aerial

Point Coordinates

| Point # | Lat., Long. |
|---------|-------------------|
| 1 | 30.4866, -90.4142 |

Flood information in this table is from the: Effective FIRM

| Point | Panel ID | Flood Zone | BFE | Ground Elevation | BWS('13)* |
|-------|--------------------------|------------|-----|------------------|-------------|
| 1 | 22105C0435F 7/22/2010 | X | out | 33.0 | 100-109 mph |

- Ground Elevation** is provided by USGS's elevation web service which provides the best available data for the specified point. If unable to find elevation at the specified point, the service returns an extremely large, negative value (-1.79769313486231E+308).
- BWS** is provided by the LSU AgCenter's basic wind speed web service developed for the 2012 IRC building codes.

Floodplain data that is shown on this map is the same data that your flood plain administrator uses. This web product is not considered an official FEMA Digital Flood Insurance Rate Map (DFIRM). It is provided for information purposes only, and it is not intended for insurance rating purposes. Please contact your local floodplain administrator for more information or to view an official copy of the FIRM or DFIRM.