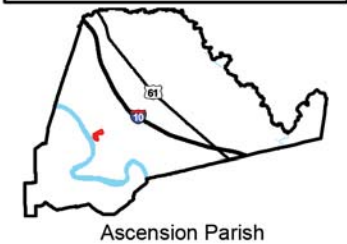


Exhibit Y. Parks Geismar Site Color Aerial Photo Map

2013 Aerial Imagery
Parks Geismar Site
Ascension Parish, LA

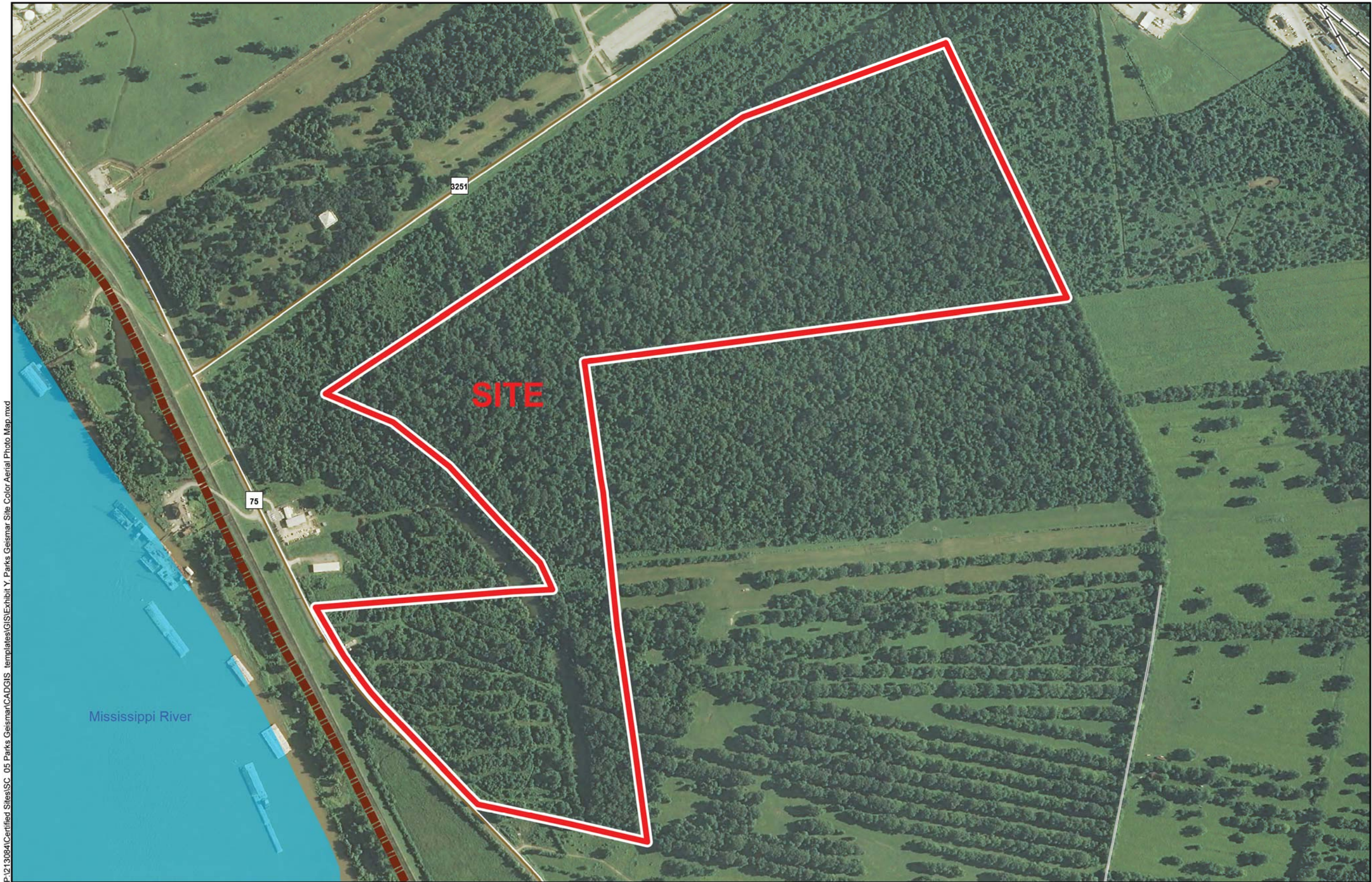
AEDC



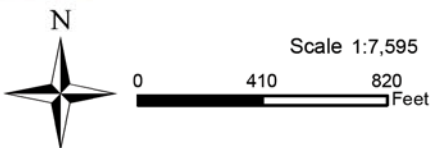
LEGEND

- Site Boundary (183.51 Acres +/-)
- Existing Roadway
 - Rural State Highway
 - Local Roads
- Railroad
- Levee
- Waterbody

P:\213084\Certified Sites\SC_05 Parks Geismar\CAD\GIS templates\GIS\Exhibit Y. Parks Geismar Site Color Aerial Photo Map.mxd



General Notes:
1. No attempt has been made by CSRS, Inc. to verify site boundary, title, actual legal ownership, deed restrictions, servitudes, easements, or other burdens on the property, other than that furnished by the client or his representative.
2. Transportation data from 2013 TIGER datasets via U.S. Census Bureau at <ftp://ftp2.census.gov/geo/tiger/TIGER2013>.
3. 2013 aerial imagery from USDA-APFO National Agricultural Inventory Project (NAIP) and may not reflect current ground conditions.



Date: 12/16/2014
Project Number: 213084.20.005
Drawn By: MAT
Checked By: TMG

CSRS
IMAGINE SHAPE DELIVER
6767 Perkins Road Suite 200 Baton Rouge, LA 70808
Telephone: 225 769-0546 Fax: 225 767-0060
www.csronline.com