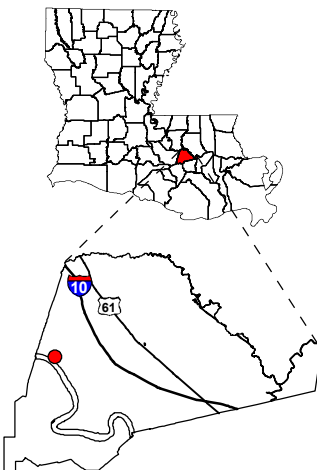


Exhibit P. Waterloo Site Electricity Transmission Infrastructure Map

Project:
**Site Exhibit for
Barber Brothers
Ascension Parish, LA**

Client:

BRAC



Ascension Parish



0 6,000 12,000 Feet

Legend

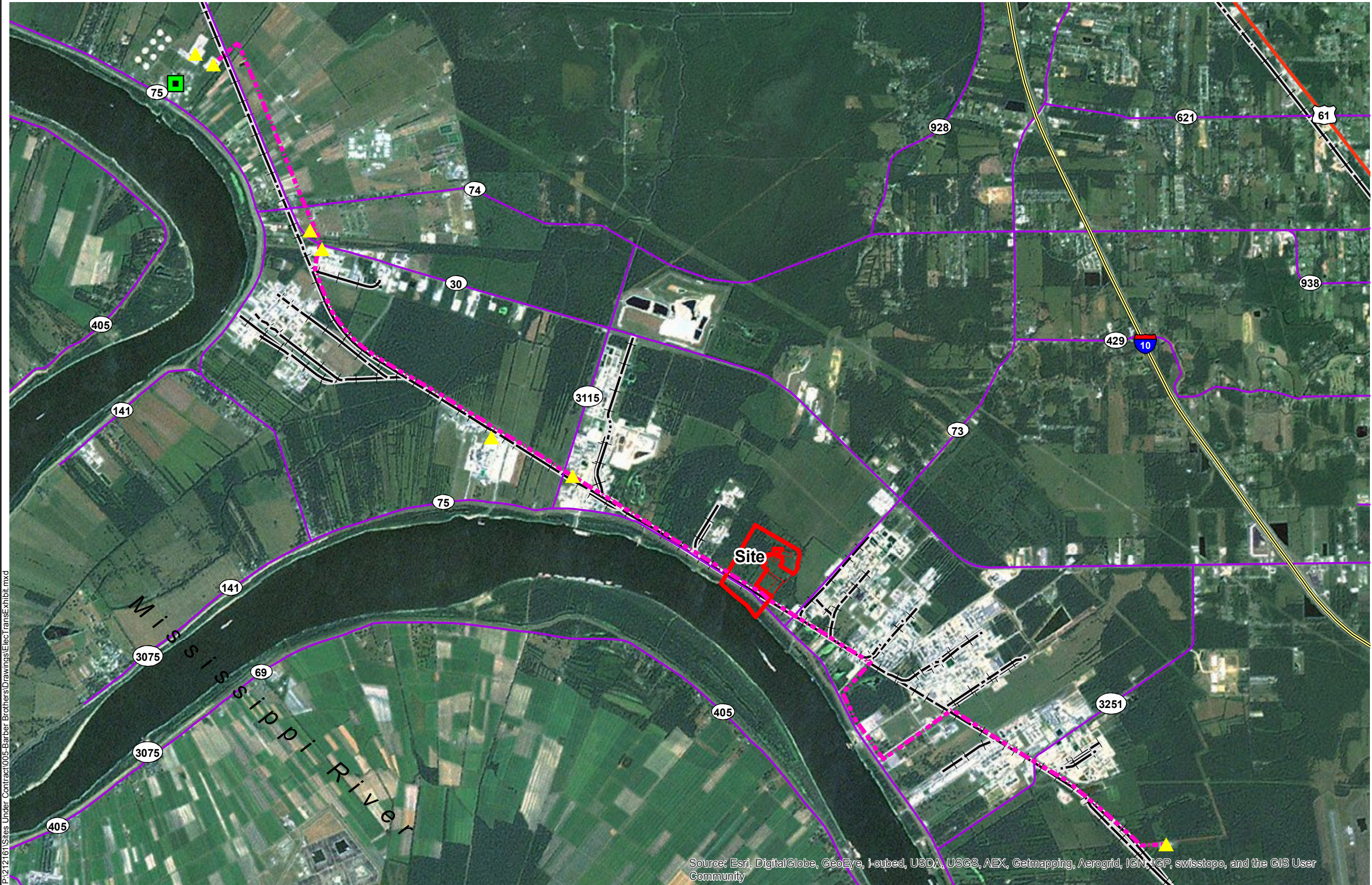
- Site Boundary (155.88± Ac.)
- Substation
- Power Plant (Willow Glen)
- Electric Transmission Line
- Interstate Highway
- U.S. Highway
- State Highway
- Railroad



Source:
GIS features acquired from public domain state and federal data sources (LDOTD, GNIS, LOSCO, US Census Bureau).

Date: 9/4/2013
Project Number: 212161.20.006
Drawn By: JES
Checked By: TMG

CSRS
IMAGINE SHAPE DELIVER
6767 Perkins Road Suite 200 Baton Rouge, LA 70808
Telephone: 225 769-0546 Fax: 225 767-0060
www.csrsonline.com



P:\212161\Sites Under Contract\005-Barber Brothers\Drawings\ElecTrans\Exhibit.mxd

Utility Notes:
1. Utility location information provided by visual inspection of the site and adjacent areas
2. Exact field location has not been determined. The lines shown are an approximate representation only.

Source: Esri, DigitalGlobe, GeoEye, i-cubed, USDA, USGS, AEX, Getmapping, Aerogrid, IGN, IGP, swisstopo, and the GIS User Community



0 2,300 4,600 Feet