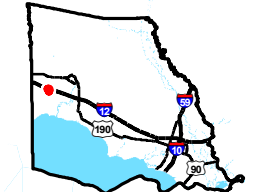


Exhibit N. The Lakes at Madison Park Site Local Product Pipelines Map

Local Product Pipelines
The Lakes at Madison Park Site
St. Tammany Parish, LA

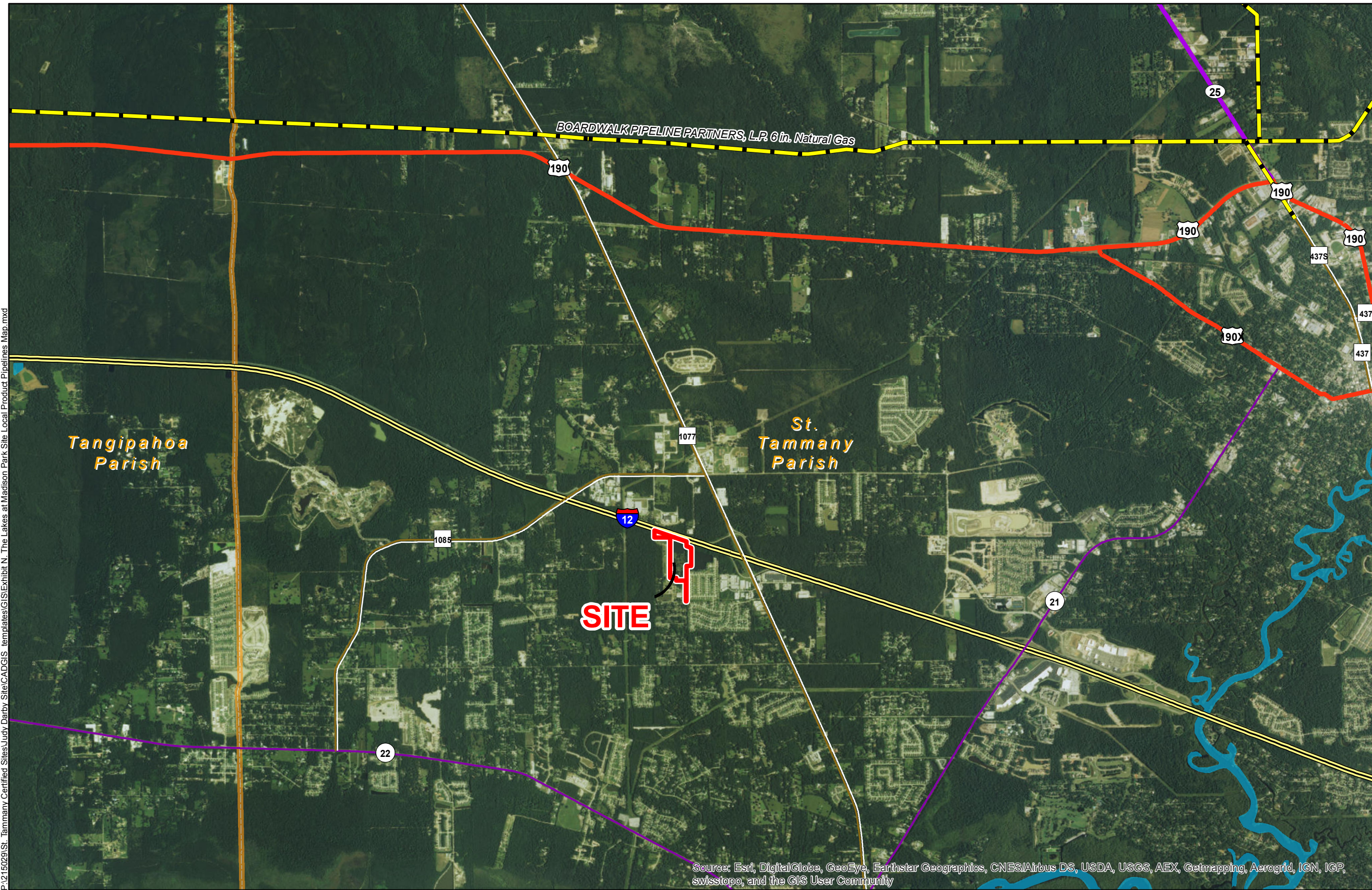
Darby Holdings, LLC



St. Tammany Parish

LEGEND

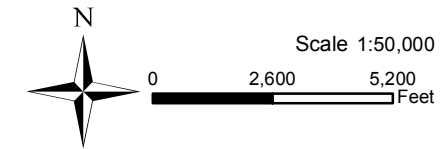
- Site Boundary (33.548 Acres +/-)
- Commodity Type**
- Natural Gas
- Existing Roadway**
- Interstate
- US Highway
- 4-Lane State Highway
- Urban State Highway
- Rural State Highway
- Waterbody
- Parish Boundary



Source: Esri, DigitalGlobe, GeoEye, Earthstar Geographics, CNES/Airbus DS, USDA, USGS, AEX, Getmapping, Aerogrid, IGN, IGP, swisstopo, and the GIS User Community

P:\215029\St. Tammany Certified Sites\Judy Darby Site\CAD\GIS templates\GIS\Exhibit N. The Lakes at Madison Park Site Local Product Pipelines Map.mxd

- General Notes:
1. No attempt has been made by CSRS, Inc. to verify site boundary, title, actual legal ownership, deed restrictions, servitudes, easements, or other burdens on the property, other than that furnished by the client or his representative.
 2. Transportation data from 2013 TIGER datasets via U.S. Census Bureau at [ftp://ftp2.census.gov/geo/tiger/TIGER2013](http://ftp2.census.gov/geo/tiger/TIGER2013).
 3. Pipeline information from IHS, Inc. and is current as of 02/2015. Product types in individual lines can vary and products represented here are current as of the publication of this exhibit, but may change depending on the demands and requirements of each system. Exact field location has not been determined by survey. The lines shown are an approximate representation only and may have been offset for depiction purposes.
 4. 2013 aerial imagery from USDA-APFO National Agricultural Inventory Project (NAIP) and may not reflect current ground conditions.



St. Tammany EDF
ECONOMIC DEVELOPMENT FOUNDATION

Date:	6/22/2015
Project Number:	215029
Drawn By:	AMB
Checked By:	JAY

CSRS
IMAGINE SHAPE DELIVER

6767 Perkins Road Suite 200 Baton Rouge, LA 70808
Telephone: 225 769-0546 Fax: 225 767-0060
www.csrsonline.com