

FOR LEASE > DOWNTOWN

Bank of America Plaza

120 W. FIFTH STREET, PINE BLUFF, ARKANSAS 71601



Bank of America Plaza



Annex Building 506 Main



Availability & Rate

Lease Rate: Starting at \$10.00/SF Full Service

Available Space: Minimum of approximately 5,000 SF

Tenant Finish Allowance Negotiable

Information & Amenities

- > Annex Building located at 506 Main Street
- > See detailed spaces on floor plans (pgs 2-4)

Contact Us

LISTING AGENT:

NATHAN MONAN

501 372 6161 | EXT. 710

LITTLE ROCK, AR

nathan.monan@colliers.com

PROPERTY MANAGER:

TROY SHELTON

501 372 6161 | 751

troy.shelton@colliers.com

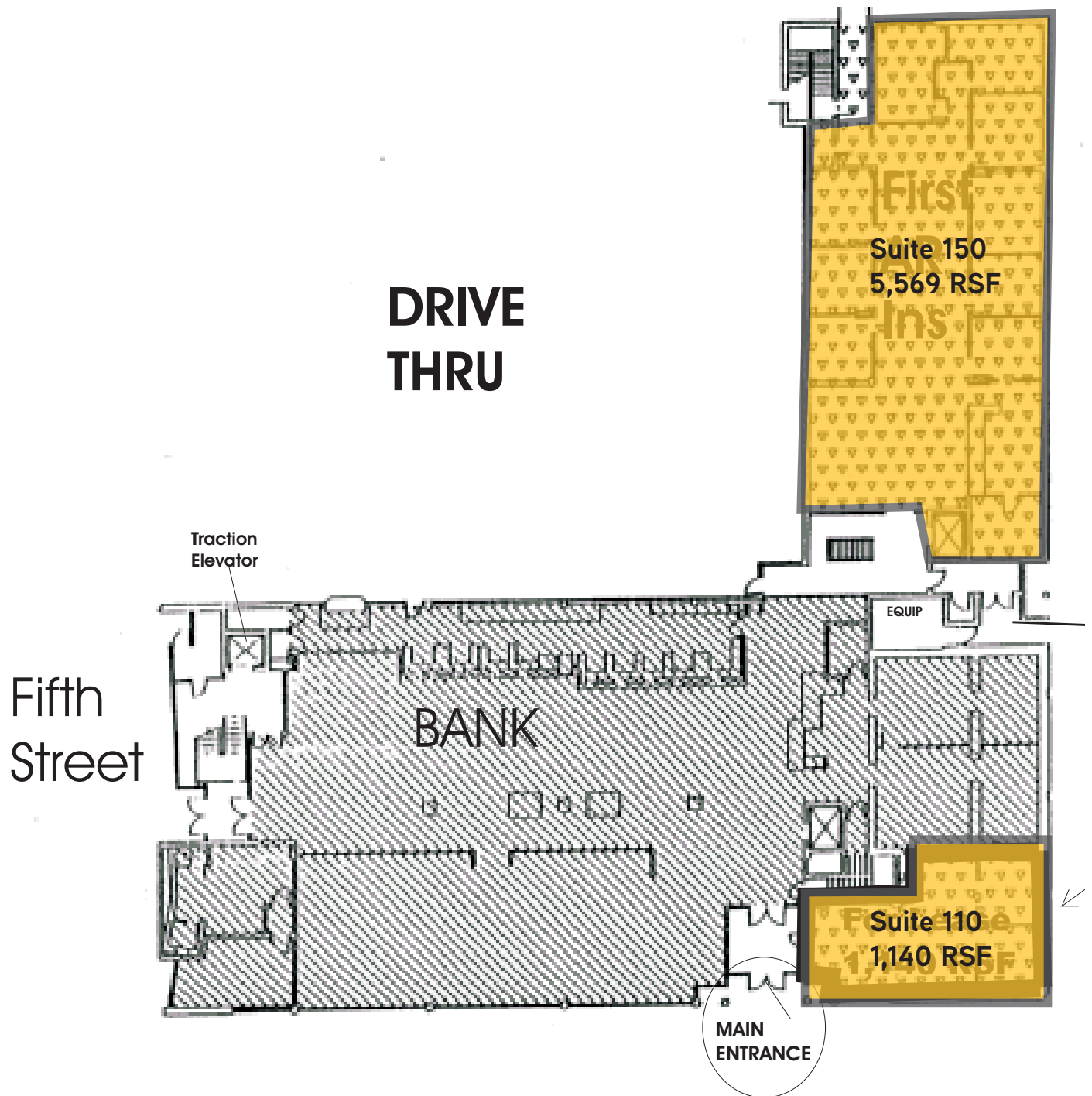
This document has been prepared by Colliers International for advertising and general information only. Colliers International makes no guarantees, representations or warranties of any kind, expressed or implied, regarding the information including, but not limited to, warranties of content, accuracy and reliability. Any interested party should undertake their own inquiries as to the accuracy of the information. Colliers International excludes unequivocally all inferred or implied terms, conditions and warranties arising out of this document and excludes all liability for loss and damages arising there from.

COLLIERS INTERNATIONAL

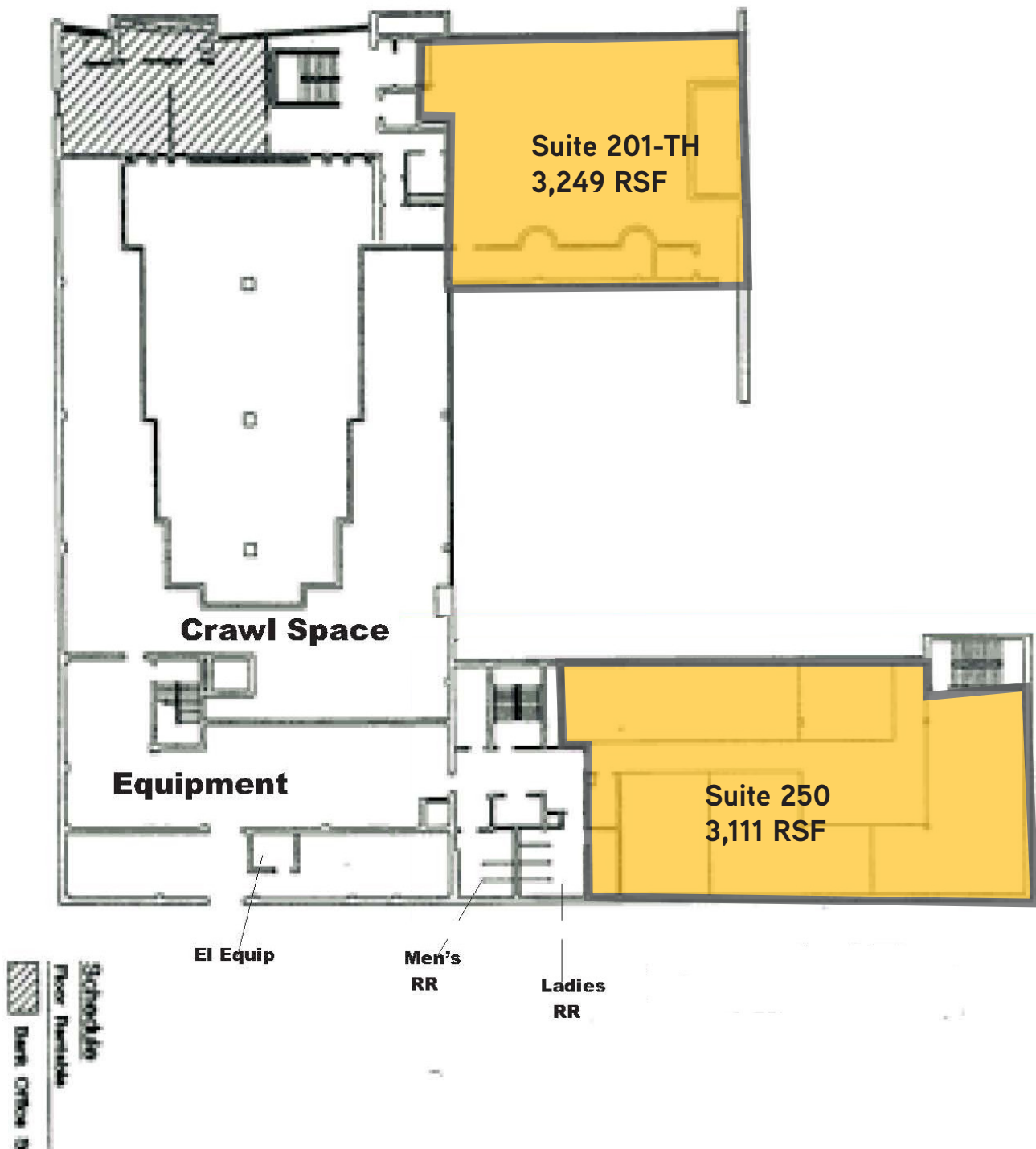
1 Allied Drive, Suite 1500

Little Rock, AR 72202

www.colliers.com/arkansas



Second Floor



Third Floor

FIFTH
STREET

