

# MARION:

Where Innovation and Community Connect

---



# marion:

where innovation  
and community connect



## STRATEGIC ADVANTAGE: UNMATCHED ACCESSIBILITY

Marion enjoys a favorable placement, strategically positioned to efficiently cater to the entire United States. Boasting convenient access to rail, river, road, and air routes, we provide diverse transportation alternatives to ensure prompt delivery of your goods.

Situated mere minutes from the Memphis International Airport and with straightforward access to I-55 and I-40, we provide the advantages of proximity to Memphis without the everyday challenges of a bustling metropolis.

## MARKET REGION

Marion is strategically positioned to serve a population exceeding 1,000,000 in its trade area. Beyond the local residents, there is a significant number of regional consumers located within a 60-minute drive of Marion. Additionally, Marion boasts a daily traffic count exceeding 100,000.

# marion: area logistics



1.5 miles

Intermodal Yard  
0.7 mile



INTERNATIONAL  
PORT OF MEMPHIS

10.4 miles



2.9 miles



FedEx®

25 miles

Family Dollar Distribution  
FedEx National LTL  
Union Pacific Intermodal

# workforce numbers

**Report Areas**

**45 minute  
Drive-time**

**Marion**

**Total population**

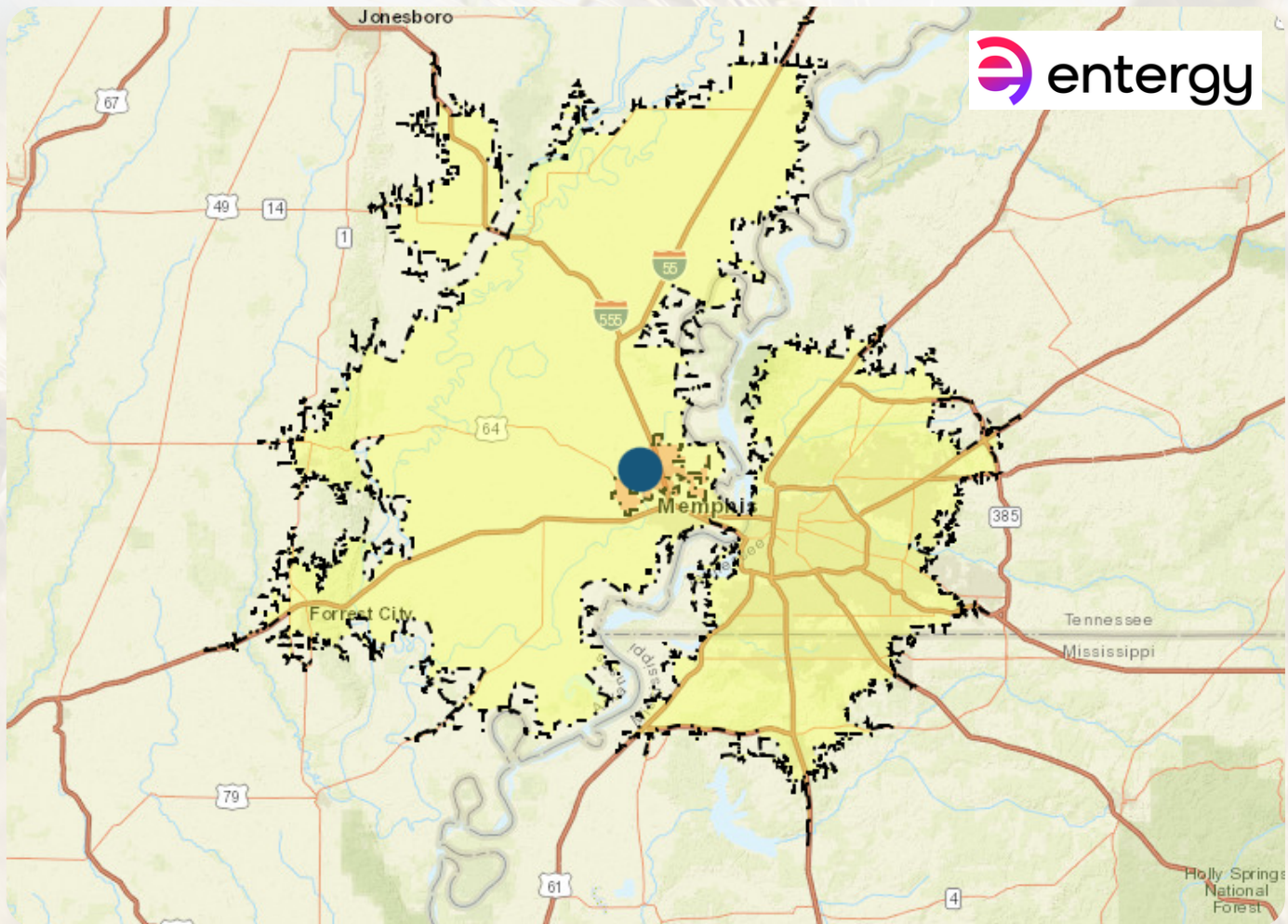
**1,155,568**

**13,563**

**16+ labor Force**

**562,522**

**7,751**



# utilities



**Electricity--Entergy**

[www.entergy.com](http://www.entergy.com)



**Gas--Summit Utilities**

[www.summitutilities.com](http://www.summitutilities.com)



**Water & Sewer--City of Marion**

Commerical Rates are available through the Economic Development department.

# city incentives

## Credits/Exemptions/Abatements

- Payment in Lieu of Tax (PILOT)
- Up to 60% abatement of real and personal property tax for up to 25 years.
- Formal approval of PILOT application is determined by the Marion City Council. Approval is based on the amount of capital investment and the number of jobs created.
- Funding in the program is not limited.
- Funding for PILOT is not subject to a funding cycle.
- Amount of Capital Investment and number of jobs created is required for application. The duration of the award can be up to 25 years.
- The approval process with Marion City Council is three months.
- The application would be submitted through the city Economic Developer.
- Administrative tracking requirements are tailored to each individual application.
- Typically, confirmation of number of employees and total capital investment annually.

# city government

The administration of Marion is composed of a mayor and six council members who represent three different wards. City council convenes on the fourth Tuesday of each month.

## **Mayor**

Tracy Brick

## **City Attorney**

Christopher Crain

## **District Court Judge**

Fred Thorne

## **City Treasurer**

David Rikard

## **City Clerk**

Patty James

## **Economic Development**

Beth Wilson

## City Council

### **Ward 1**

Kesley Hensley  
Adam Cupples

### **Ward 2**

Cliff Wood  
Taylor Guy III

### **Ward 3**

Bryan Jackson  
Ray Nasser

## Planning Commission

The Commission is dedicated to facilitating the systematic expansion of residential, commercial, and industrial developments within and around the city.

The Commission meets the first Tuesday of every month. To submit a request for presentation, please contact Freddie Thorne at [planning@marionarkansas.org](mailto:planning@marionarkansas.org) or 870.739.5410.

# demographics snapshot

Population - 13,563

Median Income - \$81,391

Median Age - 36

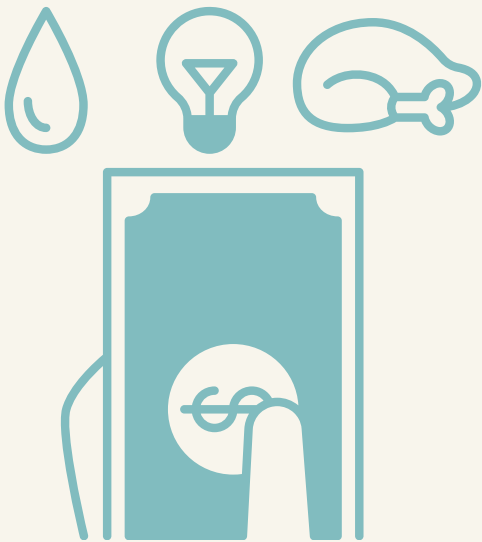
Average Home Price - \$200,368

Current Unemployment Rate - 3.9%



## cost of living

According to the Sperling's Best Places website, Marion's overall cost of living places 24.1% under the national average and 8.3% over the AR state average.



The breakdown by item as compared to the national average is as follows:

Grocery -95.8%

Healthcare - 92.1%

Housing - 56.8%

Utilities - \$94.3%

Transportation - 92.6%

Miscellaneous - 75.7%

# taxes

## State of Arkansas

Arkansas employs a progressive income tax system, wherein individuals and corporations are taxed in accordance with their total income generated within the state.

### CORPORATE INCOME TAX

Rate	Taxable Income
1.0%	First \$3,000
2.0%	Next \$3,000
3.0%	Next \$5,000
5.0%	Next \$14,000
5.1%	Over \$25,000

### PERSONAL INCOME TAX WITH NET INCOME $\leq$ \$84,500

Rate	Taxable Income
0.0%	\$0-\$5,099
2.0%	\$5,100-\$10,299
3.0%	\$10,300-\$14,699
3.4%	\$14,700-\$24,299
4.7%	\$24,300-\$84,500

## City of Marion

**Sales Tax:** 10.25% (Arkansas-6.5%, Crittenden County-1.75%, Marion-2%)

**Unemployment Tax:** For new employees, the first \$7,000 of wages is taxed at 3.1%.

### Commerical/Industrial

#### Real Property Taxes

Assessment Ratio:	20%
Tax Rate per \$100:	\$4.73
Effective Tax Rate per \$100:	\$0.94

#### Franchise Tax

3% of the outstanding capital stock

# education



## ARKANSAS STATE UNIVERSITY MID-SOUTH

Arkansas State University Mid-South is located in West Memphis, 10 minutes from Marion. It welcomes students from the Arkansas Delta and the Mid-South. In conjunction with state and federal programs such as Arkansas Delta Training and Education Consortium (ADTEC), and Advancing Delta Talent, ASU Mid-South has established a “career pathways” model that offers a series of logical employment “stop-out points” along a comprehensive training continuum.

## Advanced Manufacturing & Transportation

- Aviation Maintenance
- Auto/Diesel Maintenance
- Commercial Driving Training
- Machining
- Mechatronics
- Welding Technology

Other programs offered: Allied Health, Business and Computer Science, and Education

[www.asumidsouth.edu](http://www.asumidsouth.edu)



3 Magnet  
Elementary Schools

7th Grade  
Academy

Junior  
High

Senior  
High

## by the numbers

- \$5+ million scholarship dollars earned annually by graduating seniors
- 14:1 student-to-teacher ratio
- 10.18 average years of teaching experience for faculty
- 86% of students who enroll in college or technical school after graduation



MARION:

# Where Innovation and Community Connect

# Notes

This image shows a blank sheet of white paper with horizontal blue lines. The lines are evenly spaced and run across the width of the page. There are no margins, text, or other markings on the paper.

