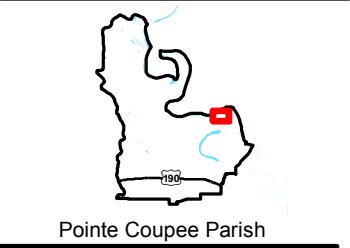


Exhibit X. Angel Ranch Site Color Aerial Photo Map

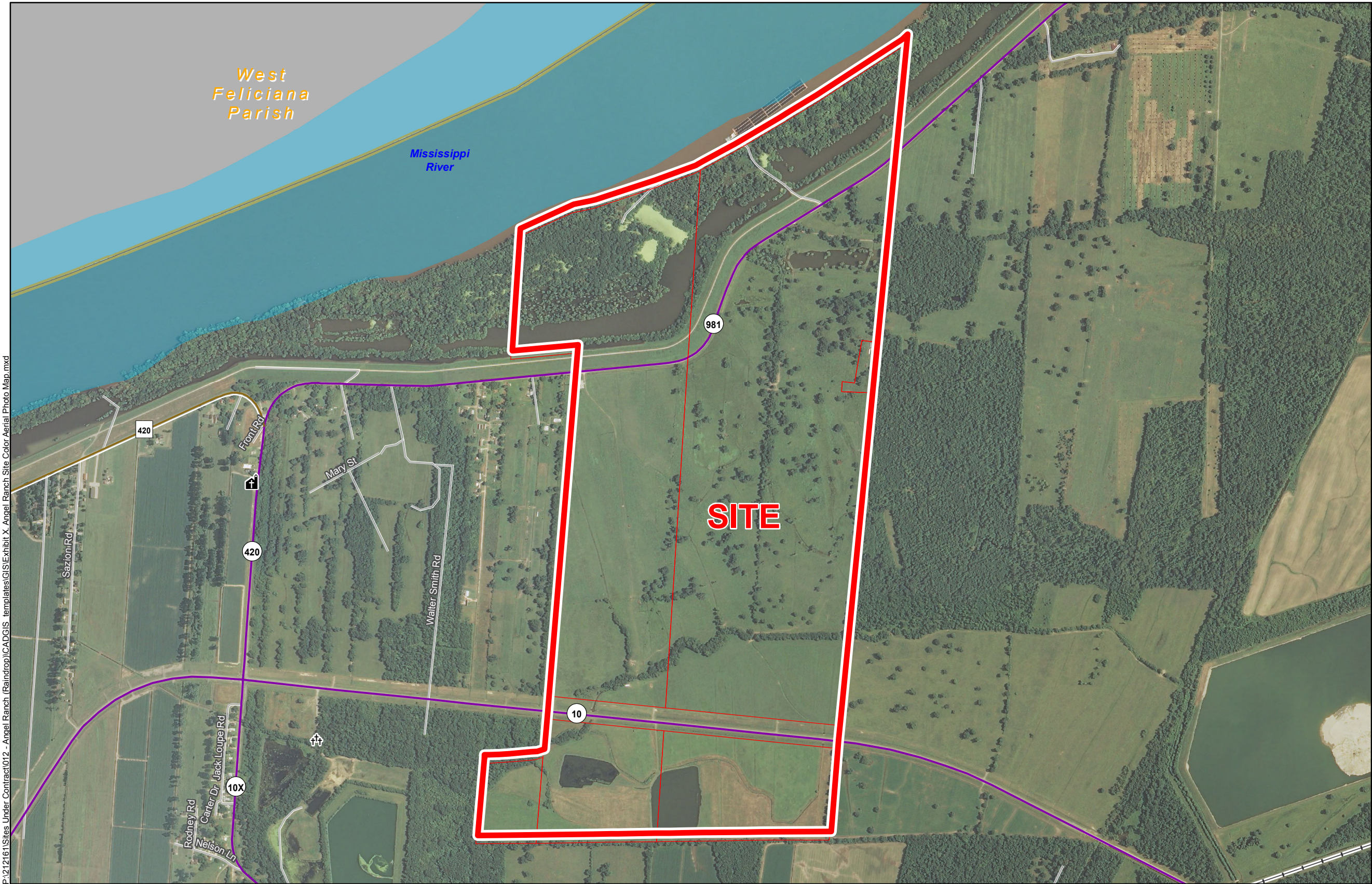
2013 Aerial Imagery
Angel Ranch
Pointe Coupee Parish, LA

BRAC



LEGEND

- Site Boundary
- Optioned Goodyear Parcels
- Optioned Goodyear Parcels
- Civic Feature
 - Cemetery
 - Church
- Existing Roadway
 - Urban State Highway
 - Rural State Highway
 - Local Roads
 - Railroad
- Waterbody
- Parish Boundary



General Notes:
1. No attempt has been made by CSRS, Inc. to verify site boundary, title, actual legal ownership, deed restrictions, servitudes, easements, or other burdens on the property, other than that furnished by the client or his representative.
2. Transportation data from 2013 TIGER datasets via U.S. Census Bureau at <ftp://ftp2.census.gov/geo/tiger/TIGER2013>.
3. 2013 aerial imagery from USDA-APFO National Agricultural Inventory Project (NAIP) and may not reflect current ground conditions.
4. Parcel information taken from Pointe Coupee Parish Assessor GIS data provided by BRAC. **Parcels in the Site are: 00309900, 00277335 and 00277340. Site size is approximately 731.56 Acres +/-.**
5. 2013 aerial imagery from USDA-APFO National Agricultural Inventory Project (NAIP) and may not reflect current ground conditions.



Baton Rouge Area Chamber.

Date:	10/28/2014
Project Number:	212161.20.012
Drawn By:	MAT
Checked By:	TMG

CSRS
IMAGINE SHAPE DELIVER
6767 Perkins Road Suite 200 Baton Rouge, LA 70808
Telephone: 225 769-0546 Fax: 225 767-0060
www.csrsonline.com