

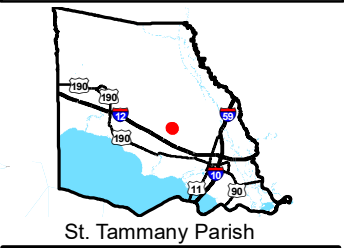
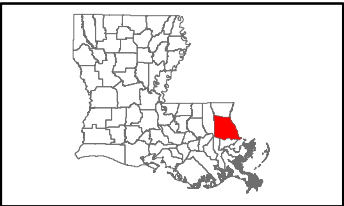
Exhibit L. Tamanend Business Park
West Site Electrical
Transmission Infrastructure Map



Tamanend Business Park West Site Electrical Transmission Infrastructure Map

Electric Transmission
Tamanend Business Park West Site
St. Tammany Parish, LA

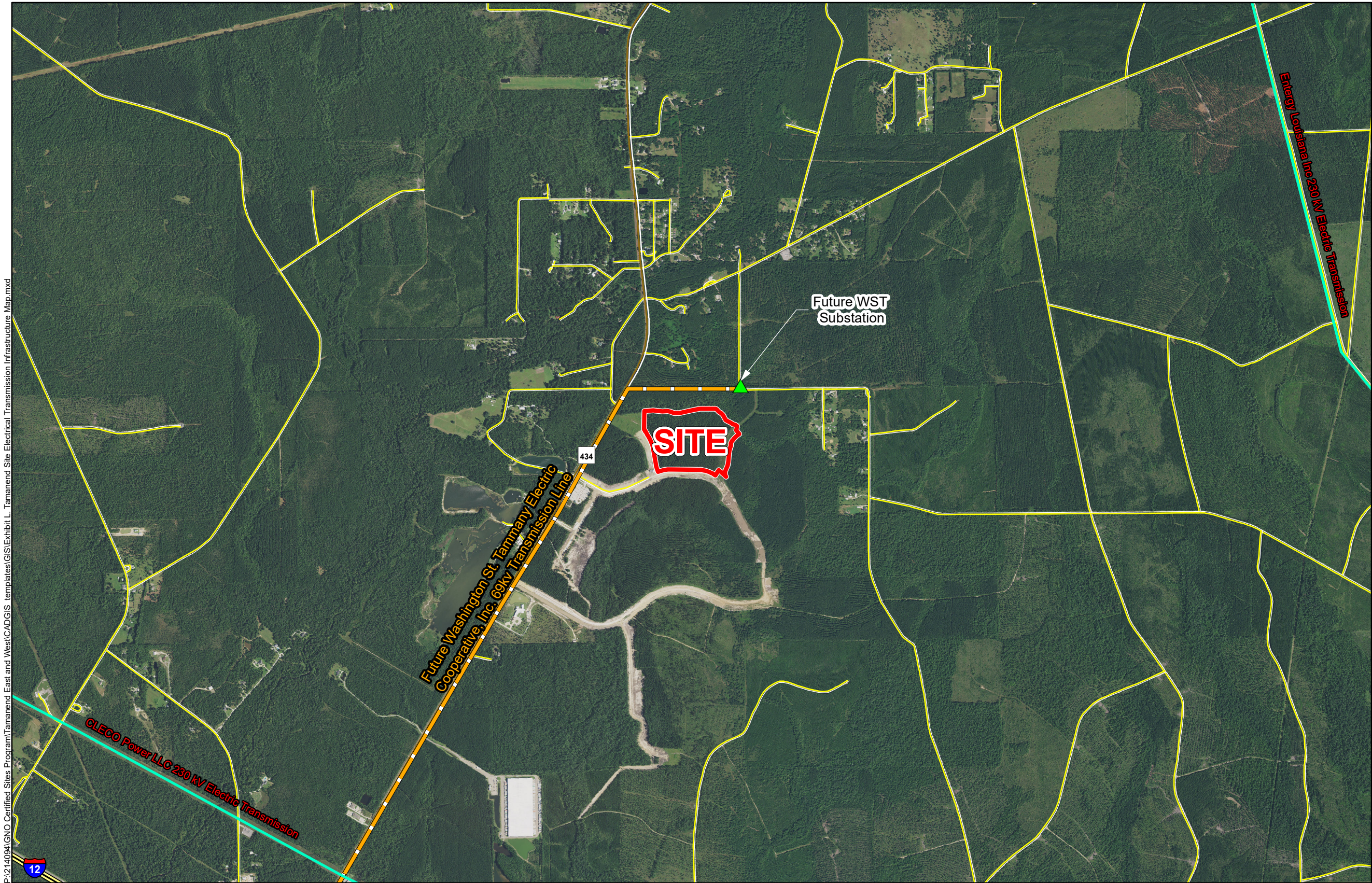
St. Tammany EDF



St. Tammany Parish

LEGEND

- Site Boundary (48.34 Ac. ±)
- Existing Electric Transmission
 - 230 kV
- Future Electric Transmission
 - Future Washington St. Tammany Electric Cooperative, Inc. 69kv Transmission Line
- Existing Roadway
 - Interstate
 - Rural State Highway
 - Local Roads



P:\214094\GNO Certified Sites Program\Tamanend East and West\CAD\GIS templates\GIS\Exhibit L. Tamanend Site Electrical Transmission Infrastructure Map.mxd

General Notes:

1. No attempt has been made by CSRS, Inc. to verify site boundary, title, actual legal ownership, deed restrictions, servitudes, easements, or other burdens on the property, other than that furnished by the client or his representative.
2. Transportation data from 2013 TIGER datasets via U.S. Census Bureau at <ftp://ftp2.census.gov/geo/tiger/TIGER2013>.
3. Utility information from visual inspection and/or the individual utility operators. Exact field location has not been determined by survey. The lines shown are an approximate representation only and may have been offset for depiction purposes.
4. 2015 aerial imagery from USDA-APFO National Agricultural Inventory Project (NAIP) and may not reflect current ground conditions.
5. Location of transmission line and substation may vary. Actual location of substation is to be determined once a user is identified.



Scale 1:25,000
0 1,300 2,600 Feet



Date:	6/10/2016
Project Number:	214094
Drawn By:	TMK
Checked By:	JAY

