

CO-LOCATION OPPORTUNITIES AT DOW DEVELOPMENT MADE EASY



DOW RESTRICTED

THE BEGINNING

Dow's Louisiana Operations (LAO) began in 1956 with the purchase of four plantations in Iberville and West Baton Rouge parishes.

- Abundant natural resources
- Deep water ports - Easy access to the Mississippi River with 2 docks
- Rail access
- Excellent pipeline network
- Dedicated workforce, salaried, non-union operation



THIS IS LOUISIANA OPERATIONS

- 28 production units producing more than 50 different products
- Integrated Industrial Park for more than 27 years which includes a joint venture with Exxon and supported operations with Poly One, Ineos, Hydrochem and Transport Services
- One of the largest petrochemical facilities in Louisiana
- 1,500 Dow Employees and 1,500-2000 contract employees.
- Brine production facility and underground hydrocarbon storage (salt dome) in Grand Bayou, LA (30 miles south of Plaquemine)
- Major product lines include: Ethylene, Polyethylene, Ethylene Oxide, Propylene, Propylene Oxide, Chlorine Alkali, Chlorinated Organics and other amines based compounds



DOW SITES IN LOUISIANA



Sterlington (ANGUS)

Greensburg (Amerchol)

Plaquemine Site

Grand Bayou Operations

St. Charles Operations (Union Carbide Corp.)

Weeks Island (ROH)

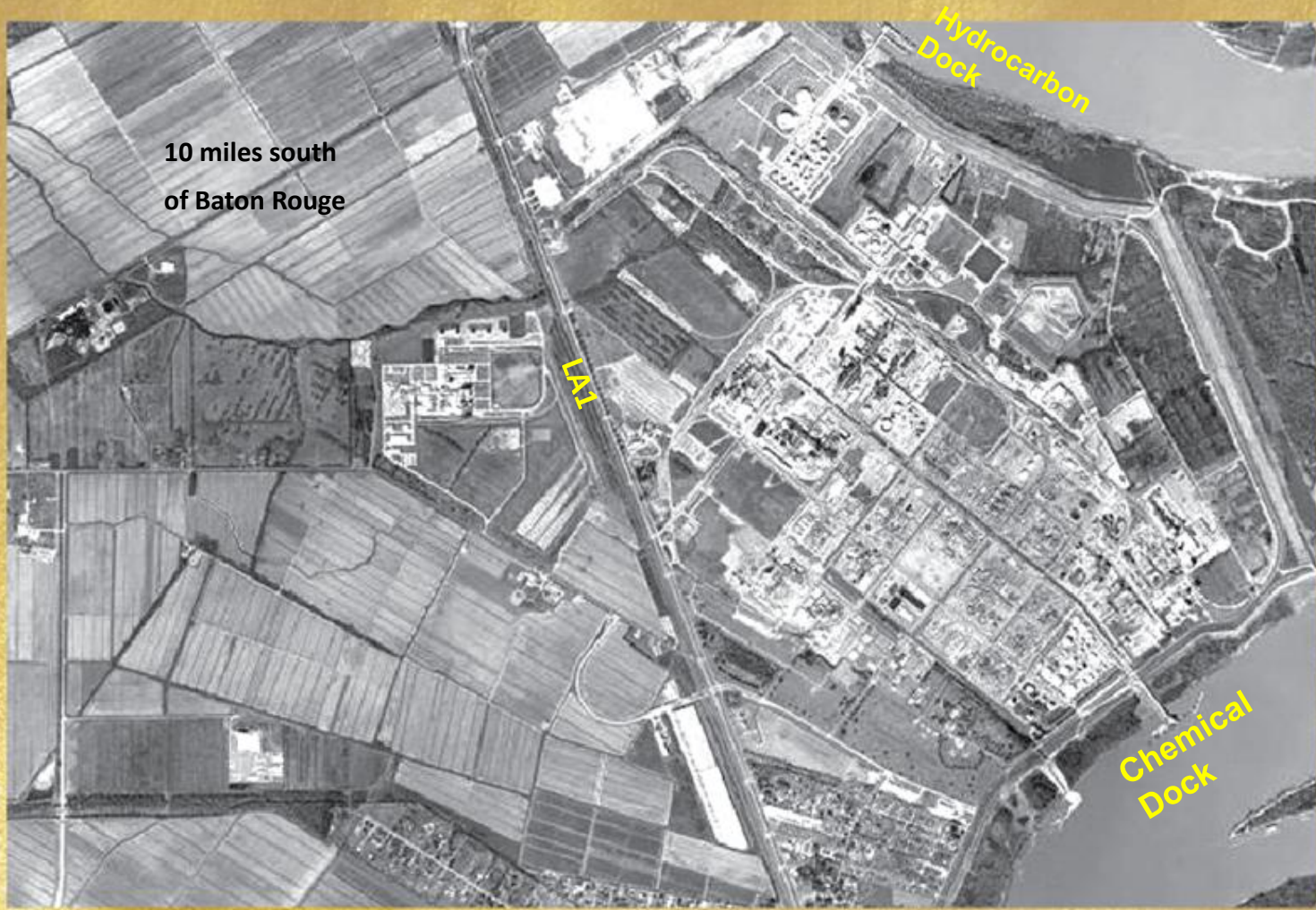
Plaquemine Site

Baton Rouge

90 miles inland from
the Gulf Coast

DOW

LOUISIANA OPERATIONS SITE MAP



Chemical Dock
DOW RESTRICTED

AREAS AVAILABLE AT THE SITE – 1200 ACRES



SITE ADVANTAGES



- ◆ **Integrated basics and specialties site**
- ◆ **Power & steam generated on site by Dow with excess capacity**
- ◆ **Fuel gas – three commercial pipeline suppliers plus storage well**
- ◆ **Other utilities – N₂, O₂, H₂, instrument air**
- ◆ **Water management – process, potable, demineralized, condensate**
- ◆ **Waste treatment – sewage & waste water**
- ◆ **Access to deep water ports with 2 docks on Mississippi River**

DOW

SITE ADVANTAGES



- ◆ **Access to large warehousing operations**
- ◆ **All modes of transportation infrastructure available: Truck, Rail, Marine, Pipeline**
- ◆ **On-site certified truck and railcar weigh scales**
- ◆ **Access to the CO2 "Green Pipeline"**
- ◆ **Positioned in a lower risk area for hurricane vulnerability**
- ◆ **Dedicated, salaried workforce**

DOW

AVAILABLE ON SITE SERVICES



VPP OSHA Star Site

- ◆ 20 Consecutive Years!
- ◆ Injury/Illness in Top 15% of U.S. Worksites

- ◆ **Environmental Health & Safety expertise**
 - Personal Safety
 - Environmental, Regulatory Affairs & Advocacy
- ◆ **On-Site Emergency Services & Security**
 - Emergency Response/ Mobile Command Post
 - Fire Protection
 - Medical Responders
 - Mutual Aid – CAER Member
- ◆ **On-Site Health & Medical Services**
- ◆ **Operations**
- ◆ **Site Logistics**
- ◆ **Maintenance**
- ◆ **Government Affairs**
- ◆ **Public Affairs**
- ◆ **Analytical Services**

DOW

WE'VE GOT ALL THE BASES COVERED ALREADY

DOW SERVICES



- ◆ **Environmental Health & Safety**
- ◆ **Supply Chain**
- ◆ **Human Resources**
- ◆ **Information Technology**
- ◆ **Customer Service**
- ◆ **Marketing and Sales**
- ◆ **Procurement**
- ◆ **Finance**
- ◆ **Six Sigma**

DOW

PIPELINE CONNECTIONS



- ◆ **Access to the CO2 Green Pipeline**
- ◆ **Nitrogen and Oxygen - Air Liquide**
- ◆ **Ammonia**
- ◆ **Carbon Dioxide**
- ◆ **Hydrogen - produced at Dow Chlorine plant – purified by Air Products**

- ◆ **Brine - Dow pipeline from Grand Bayou, LA**

- ◆ **Fuel Gas**
 - 2 High Pressure Suppliers - LIG, Bridgeline
 - 3 Med. Pressure Suppliers - LIG, Bridgeline, Cypress

- ◆ **Hydrocarbons**
 - LPG's – Naphtha
 - Ethylene – Propylene – Crude C-4's - Benzene

DOW

SITE RAW MATERIALS



Ammonia

BRINE

Ethanol

LPG's

Glyoxal

Isopar-E

Isopentane

Methanol

Methyl Amine

Naphtha

Octene

**Oxygen
(gaseous)**

Pyrolysis Gasoline

Toluene

Polyol

Styrene

Isoprene

Butadiene

Isobutane

Isopar H-solvent

Butene

Ethane

DOW

DOW PRODUCTS



50% Caustic

Benzene

Cell Effluent

Chlorine

Cracker Crude C4's

ENGAGE™

EPDM

Ethoxypolyglycols

Ethylene

Ethylene Glycol Ethyl

Ethylene Oxide

HCl (Aqueous)

Hydrogen

Amines

Isopropanol Amines

MDEA

NMEA

METHOCEL™

Methyl Chloride (M1)

Perchloroethylene

Polyethylene

HDPE

LDPE

LLDPE

Propylene

Propylene Glycols

Propylene Glyco

Methyl Ethers

Propylene Oxide

Resin Oil

Toluene/xylene mix

Polyethylene Glycols

Styrene-Isopren

Copolymers

Styrene-Butadiene

Copolymers

DOW

LAO FAST FIVE FACTS

- 1** Strategically located on the Mississippi River with access to the Gulf of Mexico
- 2** Our infrastructure of pipelines, power and steam, dock capacity and rail makes co-location here faster and easier
- 3** We have a proven track record of working successfully with third party tenants
- 4** Our dedicated salaried workforce is renowned for a "can-do" attitude, even when given tough challenges
- 5** 20 years as an VPP OSHA Star site with an exemplary safety record



FOR MORE INFORMATION, PLEASE CONTACT:

**Larry P. Rushing
Louisiana Industry Parks Director
lprushing@dow.com
(225) 353-5360**



DOW RESTRICTED