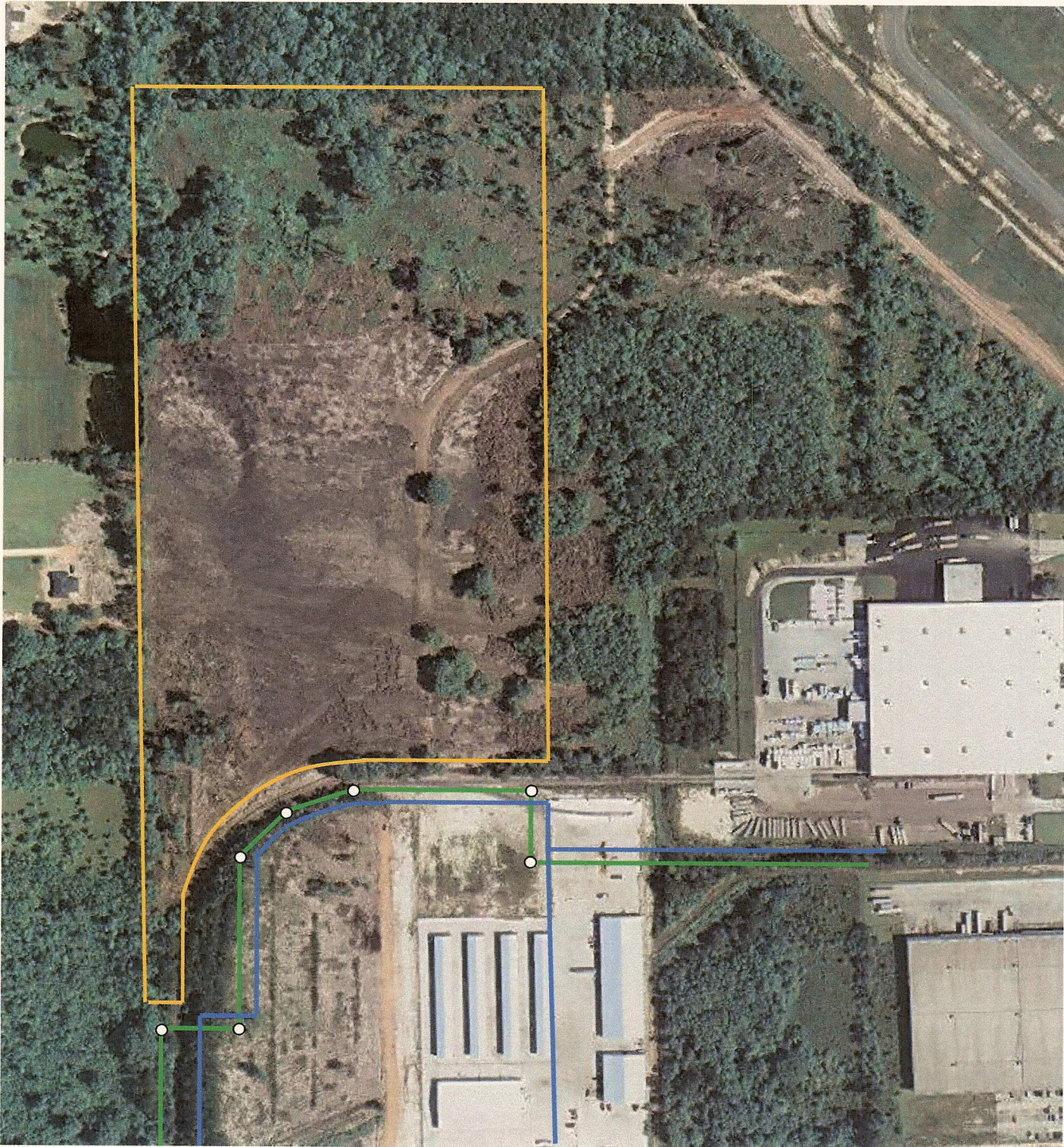


City of Hammond - West of Pride Drive **Exhibit F – Water & Sewer Utilities**  
Potable Water and Wastewater Services



12" WATER MAIN

12" GRAVITY SEWER

○ SEWER MANHOLE

**NOTE: SHCHEMATIC DRAWING ONLY  
NOT INTENDED FOR ACCURACY**

PREPARED BY THE WATER & SEWER  
MAPPING OFFICE 985 277-5964

