

Exhibit EE.

Acadiana Regional Airport P5 Site Wetlands Delineation Report



Acadiana Regional Airport P5 Site Wetlands Delineation Report

One Acadiana

Acadiana Regional Airport P5 Site – New Iberia, LA
October 2025

Table of Contents

1.0 INTRODUCTION4

2.0 METHODOLOGY4

3.0 FINDINGS5

 3.1 HYDROLOGY 5

 3.1.1 General Site Characteristics 5

 3.1.2 Sample Plot Data 6

 3.2 VEGETATION 6

 3.2.1 General Site Characteristics 6

 3.2.2 Sample Plot Data 6

 3.3 SOILS 6

 3.3.1 General Site Characteristics 6

 3.3.2 Sample Plot Data 6

4.0 SUMMARY AND CONCLUSIONS7

 4.1 DATA SUMMARY 7

 4.2 CONCLUSION 7

5.0 REFERENCES8

6.0 DEFINITIONS9

APPENDICES

APPENDIX A – DATA SHEETS

APPENDIX B - PHOTOGRAPHS

APPENDIX C - MAPS

Executive Summary

Purpose A routine wetland delineation was conducted on September 26, 2025 at the Acadiana Regional Airport P5 Site (Site). The purpose of the wetland delineation was to determine the presence/absence of wetlands located on the Site.

Scope This routine wetland delineation is a Level 3 Delineation. The delineators evaluated the three technical criteria: vegetation, hydrology, and soils in accordance with the 1987 U.S. Army Corps of Engineers (COE) Wetlands Delineation Manual, and the Gulf Coastal Plain Regional Supplement to the 1987 manual. All three criteria must be present in order to be a potentially jurisdictional wetland.

Summary of Findings Based on field observations and review of available desktop resources, no wetlands were identified within the Site boundaries. Vegetation, soils, and hydrology do not collectively meet the criteria established under the U.S. Army Corps of Engineers Wetland Delineation Manual and the applicable Regional Supplement. The Site is actively managed for agricultural production, and the maintained drainage network effectively prevents the development of wetland hydrology.

Several man-made ditches and two channelized features were observed onsite. Although some display characteristics resembling relatively permanent tributaries, field observations confirmed that all onsite drainage features are upland-constructed, exhibit only ephemeral surface flow following rainfall events, and lack continuous or relatively permanent flow to downstream waters. In accordance with 33 C.F.R. § 328.3(b)(6) and *Sackett v. EPA* (2023), these agricultural drainage conveyances are excluded from federal jurisdiction.

Accordingly, it is our professional opinion that no wetlands or jurisdictional Waters of the United States subject to regulation under Section 404 of the Clean Water Act or Section 10 of the Rivers and Harbors Act were identified within the Site boundaries.

The findings above are illustrated in the attached map.

The limits of the Site were not staked at the time of the delineation.



NOTE: A jurisdictional wetland determination can only be made by the U.S. Corps of Engineers (USACE). Consultants can perform wetland delineations, and submit data collected in the prescribed manner to the USACE along with recommendations; however, it is the USACE that makes the final determination. The New Orleans District of the USACE has jurisdiction in the area of this site.



Source: Esri, DigitalGlobe, GeoEye, Earthstar Geographics, CNES/Airbus DS, USDA, USGS, AEX, Getmapping, Aerogrid, IGN, IGP, swisstopo, and the GIS User Community

WETLAND DELINEATION MAP

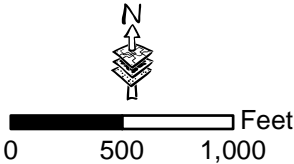
**ACADIANA REGIONAL AIRPORT
P5 SITE**
One Acadiana
Iberia Parish, LA

FOR PERMITTING ONLY-
This document is not to be used
for construction, bidding, recordation,
conveyance or sales.

Plot_ID	Latitude (DMS)	Longitude (DMS)
1	30°01'29.539" N	91°53'17.151" W
2	30°01'18.737" N	91°53'09.608" W
3	30°00'59.828" N	91°52'54.702" W
4	30°00'44.012" N	91°53'01.341" W
5	30°00'40.827" N	91°53'01.854" W

- Legend**
- Delineation_Plot
 - Non-Wetland Waters
 - Project_Boundary
 - Non-Wetlands
 - █ Non-Wetland Waters

Rev: (date:initial)	Created by:	BPM
	Date:	10/8/2025
		NA



1.0 INTRODUCTION

A routine wetland delineation was conducted on September 26, 2025 at the Acadiana Regional Airport Site (Site). The purpose of the wetland delineation was to determine the presence/absence of wetlands on the Site.

Geographically, the Site is located in Iberia Parish approximately 4 miles westerly from the City of New Iberia, LA. The location of the Site is illustrated on the Vicinity Map (Appendix C).

The Site is situated in an area of agriculture. Sugarcane is the crop occupying the Site.

2.0 METHODOLOGY

A review of the project site was conducted with the following tools to identify potential wetland indicators according to the 1987 Wetland Delineation Manual and Regional Supplement:

- USGS 7.5-minute topographic quadrangle maps,
- [National Wetlands Inventory Maps](#)
- [Classification of Wetlands and Deepwater Habitats of the United States \(Cowardin et al. 1979\)](#);
- [State of Texas Wetland Plant List](#)
- [The PLANTS Database \(USDA / NRCS\)](#);
- [U.S. Department of Agriculture \(USDA\), Natural Resource Conservation Service \(NRCS\) Web Soil Survey](#)
- [USGS National Hydrography Dataset \(NHD\)](#);
- Remote Sensing Aerial Photography including National Agricultural Imagery Program (NAIP) natural color and color infrared aerial photography;
- [FEMA Floodplain Maps](#)

Data sources were utilized as appropriate, findings were summarized, and a preliminary evaluation was conducted to determine potential existence of wetland indicators in the project area. After considering the preliminary data, a routine delineation method level was selected.

Per the 1987 Wetland Delineation Manual, the complexity of the project area and the quality and quantity of available information will be the influences governing the Routine Wetland Delineation Level. The three levels are as follows:

- Level 1 – An onsite inspection is unnecessary because existing information is sufficient for making a determination for the entire project area.
- Level 2 – An onsite inspection is necessary because insufficient information is available to characterize the vegetation, soils, and hydrology of the entire project area.
- Level 3 - An onsite inspection is necessary because sufficient information is available for a portion, but not all, of the project area.

This routine wetland delineation is a Level 3 Delineation. Preliminary data collected on portions of the site contained sufficient information to determine the presence or absence of wetlands without further field data collection. The remaining portions of the site were field verified for the absence or presence of wetlands using the three technical criteria: vegetation, hydrology, and soils in accordance with the 1987 U.S. Army Corps of Engineers (COE) Wetlands Delineation Manual, and the Gulf Coastal Plain Regional Supplement to the 1987 manual. All three criteria must be present in order to be a jurisdictional wetland. The absence of any of these criteria could exclude an area from being a wetland under the jurisdiction of the Corps of Engineers.

2.1 Special considerations for delineating agricultural lands

The actively managed agricultural area was evaluated to determine if it was a wetland prior to agricultural use or if the area would revert to wetlands if agricultural activities cease.

The regional supplement guidance document was used during the evaluation of the agricultural area because in general:

- Wetlands used for agriculture often lack a natural plant community and may be altered by mowing, grazing, herbicide use, or other management practices;
- Soils may be disturbed by cultivation, land clearing, grading, or bedding, at least in the surface layers, and hydrology may or may not be manipulated; and
- Some areas still retain their natural wetland hydrology, but historic wetlands in other areas have been effectively drained and no longer meet wetland hydrology standards.

The wetland delineation in the agricultural area considered if:

- The plant community that would occupy the site under normal circumstances would be hydrophytic if the vegetation were not cleared or manipulated;
- The soil profile will exhibit hydric characteristics with or without agricultural management using standard or supplemental technical methodology;
- Wetland hydrology is present at the site under normal circumstances; and
- A drainage system is present, how it is designed to function, and whether it is effective in removing wetland hydrology from the area.

The Level 3 routine wetland delineation captured these considerations, and findings are incorporated into this report.

3.0 FINDINGS

A total of five (5) sample plots were taken on the Site. The sample plot locations were selected based on visual observations of changes in vegetation and/or topography. Recorded data forms are presented in Appendix A.

Photographs are presented in Appendix B. The photographs illustrate typical conditions that were observed at the plots and various locations along existing streams.

Locations of the sample plots and observations of various locations documented relative to the Site can be referenced in Appendix C.

3.1 Hydrology

3.1.1 General Site Characteristics

The hydrology of the Site is characterized as relatively well-drained, with slopes ranging from approximately 0 to 2 percent. Surface water runoff represents the dominant hydrologic process, influenced by subtle topographic gradients and a network of maintained drainage ditches. The highest elevations occur in the northeastern and east-central portions of the Site, facilitating drainage toward the west and southwest.

Several ditches were identified within the Site boundaries. These features meet the definition of non-wetland waters, as they exhibit a defined bed and bank. The ditches were excavated and are maintained as part of normal agricultural operations and function primarily to collect and convey surface runoff. Although some segments may retain standing water for extended periods following rainfall events or during seasonal high-water conditions, field observations did not confirm continuous or relatively permanent flow. Two of the ditches exhibit channel characteristics similar to relatively permanent tributaries; however, they lack sustained or nearly continuous flow to downstream waters and therefore do not meet the hydrologic standard for relatively permanent waters. Based on review of USGS topographic mapping, the

ditches and these non-permanent channels ultimately connect to Segura Branch Canal, which flows southwest to Bayou Petite Anse, a potential traditionally navigable water.

Elevations and slope patterns across the Site are further illustrated in the LiDAR map provided in Appendix C.

3.1.2 Sample Plot Data

No indicators of wetland hydrology were observed on the Site. Indicators of wetland hydrology are detailed in the Routine Wetland Determination Data Sheets located in Appendix A.

3.2 Vegetation

3.2.1 General Site Characteristics

The Site is actively managed for sugarcane production, with cultivated fields comprising the dominant land cover. Vegetation within the production areas consists almost entirely of monoculture sugarcane (*Saccharum* spp.), maintained through regular agricultural practices such as planting, harvesting, and field grading. Headlands, field roads, and ditch banks support herbaceous vegetation communities dominated by grasses and other non-woody species that are maintained as part of ongoing agricultural operations. These areas are frequently mowed or disturbed by equipment traffic, and likely herbicides, preventing the establishment of woody vegetation. No natural or unmanaged plant communities were observed within the cultivated portions of the Site. Vegetation observed at the Site is documented in the corresponding data sheets included in Appendix A.

3.2.2 Sample Plot Data

Plots 1-5 did not meet the criteria for dominance or prevalence of wetland vegetation. Dominance and prevalence were determined using standard calculations based on the relative abundance of hydrophytic species. Detailed vegetation data, including species composition and wetland indicator statuses, as well as the results of dominance/prevalence tests and overall vegetation determinations, are provided in the corresponding Routine Wetland Determination Data Sheets in Appendix A. Representative site photographs illustrating vegetative communities across the Site are included in Appendix B.

3.3 Soils

3.3.1 General Site Characteristics

According to the Iberia Parish Soil Survey, the Site contains or is in the following NRCS mapped soil types (Appendix C):

Map Symbol	Soil Name	Hydric Rating
Ja	Jeanerette silt loam, 0 to 1 percent slopes	2
Pa	Patoutville silt loam, 0 to 1 percent slopes	0

According to the NRCS Soil Survey, the Ja and the Pa soil types are listed as predominantly non-hydric.

3.3.2 Sample Plot Data

Hydric soil indicators were identified in Plots 1 through 4, with the primary indicator observed being a depleted matrix (Indicator F3). These soils exhibited matrix colors and redoximorphic features consistent with periodic saturation. No soil sample was excavated at Plot 5 due to safety restrictions associated with an active pipeline corridor; however, its landscape position and surrounding conditions were consistent with those observed at the adjacent hydric plots. Detailed

soil descriptions, including matrix colors, redox features, and hydric soil determinations, are provided in the corresponding Routine Wetland Determination Data Sheets located in Appendix A.

4.0 SUMMARY AND CONCLUSIONS

4.1 Data Summary

The following table illustrates the results of the sample plot data:

Data Plot	Hydrology	Vegetation	Soils
Plot 1	N	N	Y
Plot 2	N	N	Y
Plot 3	N	N	Y
Plot 4	N	N	Y
Plot 5	N	N	Y

4.2 Conclusion

Based on field observations and review of available desktop resources, no wetlands were identified within the Site boundaries. Vegetation, soils, and hydrology across the Site do not collectively meet the three mandatory wetland criteria established under the U.S. Army Corps of Engineers Wetland Delineation Manual and the applicable Regional Supplement. The Site is actively managed for agricultural production, and the maintained drainage network effectively prevents the development of wetland hydrology.

Several man-made ditches were documented onsite. These features appear to meet the definition of non-wetland waters, as they exhibit a defined bed and bank. The ditches were excavated and are maintained wholly in uplands as part of normal agricultural operations and function primarily to collect and convey surface runoff. Although some segments may retain standing water following rainfall events or during seasonal high-water conditions, no evidence of continuous or relatively permanent flow was observed.

Two of the features observed on the Site exhibit channel characteristics that may resemble relatively permanent tributaries in form; however, field observations confirmed that these channels lack sustained or continuous flow and therefore do not meet the hydrologic criteria of a relatively permanent water. As with the agricultural ditches, these features are maintained in uplands, convey only ephemeral surface flow following rainfall events, and do not establish a direct, continuous surface-water connection to downstream jurisdictional waters. Review of USGS topographic mapping indicates that the onsite drainage features ultimately connect to Segura Branch Canal, which flows southwest to Bayou Petite Anse, a potential traditionally navigable water.

Under current federal jurisdictional standards and consistent with 33 C.F.R. § 328.3(b)(6), ditches excavated wholly in and draining only uplands and that do not carry a relatively permanent flow of water are excluded from jurisdiction. Because the onsite ditches and channelized features meet these exclusion criteria (they are upland-constructed, agricultural drainage conveyances with ephemeral, non-continuous flow), it is our professional opinion that they are non-jurisdictional under the Clean Water Act, as clarified in *Sackett v. EPA* (2023) and subsequent agency guidance.

Accordingly, it is our professional opinion that no wetlands or jurisdictional waters subject to federal regulation under Section 404 of the Clean Water Act or Section 10 of the Rivers and Harbors Act (*Waters of the United States*) were identified within the Site boundaries. Mapped locations of observed ditches and other features are shown on the Wetland Map in Appendix C.

Please note that only the U.S. Army Corps of Engineers (USACE) can issue an Approved Jurisdictional Determination (JD). While consultants may delineate wetlands and provide professional recommendations, the final decision regarding federal

jurisdiction rests with the New Orleans District, U.S. Army Corps of Engineers, which maintains regulatory authority over this Site.

5.0 REFERENCES

Corps of Engineers Wetlands Delineation Manual. 1987. Technical Report Y-87-1.

National List of Vascular Plants Species that Occur in Wetlands. Prepared by Ecology Section, National Wetlands Inventory, U.S. Fish and Wildlife Service.

U.S. Department of Agriculture, Natural Resources Conservation Service. 1998. Field Indicators of Hydric Soils in the United States, version 6.0. G.W. Hurt, Whited, P.M., and Pringle, R.F. (eds.). USDA, NRCS, Fort Worth, TX.

Soil Mapping Units and Hydric Soils Designations Louisiana. May 1995. Third Edition

U.S. Army Corps of Engineers. October 2008. Interim Regional Supplement to the Corps of Engineers Wetland Delineation Manual: Atlantic and Gulf Coastal Plain Region. Final Report

6.0 DEFINITIONS

Term	Definition
<i>Aerobic</i>	A situation in which molecular oxygen is a part of the environment.
<i>Anaerobic</i>	A situation in which molecular oxygen is absent (or effectively so) from the environment
<i>Atypical situation</i>	As used herein, this term refers to areas in which one or more parameters (vegetation, soil, and/or hydrology) have been sufficiently altered by recent human activities or natural events to preclude the presence of wetland indicators of the parameter.
<i>Dominance Test</i>	This evaluation test ranks plant species that immediately exceed 50% of the total dominance measure for a vegetation stratum, plus any additional species comprising 20% or more of the total dominance measure for that stratum. As part of the vegetation criteria, species dominance is evaluated using the “50/20 rule.”
<i>Growing season</i>	The portion of the year when soil temperatures at 19.7 in. below the soil surface are higher than biologic zero (5 (C) (U.S. Department of Agriculture & Soil Conservation Service 1985). For ease of determination this period can be approximated by the number of frost-free days (U.S Department of the Interior 1970).
<i>Hydric Soils</i>	<p>Hydric soils are defined as soils that are formed under conditions of saturation, flooding, or ponding long enough during the growing season to develop anaerobic conditions in the upper part (Federal Register, July 13, 1994). Almost all hydric soils exhibit characteristic morphologies that are a result of repeated periods of saturation and/or inundation for more than a few days at a time. Saturation and inundation causes a depletion of oxygen in the soil when combined with anaerobic microbial activity in the soil. This anaerobiosis process results in characteristic morphologies such as the reduction, translocation, and/or the accumulation of iron. This process forms features in the soil that are called redoximorphic features that are particularly useful for identifying hydric soils.</p> <p>The soil investigation criterion requires the use of a soil probe or a pit excavated to a 16-inch depth in order to investigate for hydric indicators. These indicators typically include, but are not limited to:</p> <ul style="list-style-type: none"> • gleyed or low-chroma colors (redoximorphic features) • mottles (redoximorphic features) • listed on the local hydric soils list • listed on the national hydric soils list • concretions (redoximorphic features).
<i>Hydrophytic Species</i>	Hydrophytic species, due to morphological, physiological, and/or reproductive adaptation(s), have the ability to grow, effectively compete, reproduce, and/or persist in anaerobic soil conditions.
<i>Hydrophytic Vegetation</i>	In order for the vegetation to be considered hydrophytic (wet), the prevalent vegetation must consist of <i>macrophytes</i> that are typically adapted to areas having hydrologic and soil conditions unique to wetlands (e.g. must be <i>hyrdophytic species</i>). Prevalent vegetation is characterized by the dominant species comprising the plant community or communities. Dominant plant species are those that contribute more to the character of a plant community than other species present, as estimated or measured in terms of some ecological parameter or parameters. The two most commonly used estimates of dominance are basal area (trees) and percent areal cover (herbs). During a routine wetland delineation, the rapid test, <i>dominance test</i> , and <i>prevalence index</i> are predominantly used to determine if hydrophytic vegetation is present at a sample plot.
<i>Macrophytes</i>	Macrophytes are any plant material that can be seen without the aid of magnification.

Term	Definition																		
<i>Plant Indicator Status Categories</i>	<p>Categories originally developed and defined by the USFWS National Wetlands Inventory and subsequently modified by the National Plant List Panel. The three facultative categories are subdivided by (+) and (-) modifiers.</p> <table border="1" data-bbox="409 277 1490 869"> <thead> <tr> <th data-bbox="415 285 727 340">Indicator Category</th> <th data-bbox="734 285 857 340">Indicator Symbol</th> <th data-bbox="863 285 1484 340">Definition</th> </tr> </thead> <tbody> <tr> <td data-bbox="415 348 727 474"><i>Obligate Wetland Plants</i></td> <td data-bbox="734 348 857 474">(OBL)</td> <td data-bbox="863 348 1484 474">Plants that occur almost always (estimated probability >99%) in wetlands under natural conditions, but which may also occur rarely (estimated probability <1%) in non-wetlands.</td> </tr> <tr> <td data-bbox="415 483 727 571"><i>Facultative Wetland Plants</i></td> <td data-bbox="734 483 857 571">(FACW)</td> <td data-bbox="863 483 1484 571">Plants that occur usually (estimated probability >67% to 99%) in wetlands, but also occur (estimated probability 1% to 33%) in non-wetlands.</td> </tr> <tr> <td data-bbox="415 579 727 667"><i>Facultative Plants</i></td> <td data-bbox="734 579 857 667">(FAC)</td> <td data-bbox="863 579 1484 667">Plants with a similar likelihood (estimated probability 33% to 67%) of occurring in both wetlands and non-wetlands.</td> </tr> <tr> <td data-bbox="415 676 727 764"><i>Facultative Upland Plants</i></td> <td data-bbox="734 676 857 764">(FACU)</td> <td data-bbox="863 676 1484 764">Plants that occur sometimes (estimated probability 1% to <33%) in wetlands but occur more often (estimated probability >67% to 99%) in non-wetlands.</td> </tr> <tr> <td data-bbox="415 772 727 861"><i>Obligate Upland Plants</i></td> <td data-bbox="734 772 857 861">(UPL)</td> <td data-bbox="863 772 1484 861">Plants that occur rarely (estimated probability <1%) in wetlands but occur almost always (estimate probability >99%) in non-wetlands under natural conditions.</td> </tr> </tbody> </table>	Indicator Category	Indicator Symbol	Definition	<i>Obligate Wetland Plants</i>	(OBL)	Plants that occur almost always (estimated probability >99%) in wetlands under natural conditions, but which may also occur rarely (estimated probability <1%) in non-wetlands.	<i>Facultative Wetland Plants</i>	(FACW)	Plants that occur usually (estimated probability >67% to 99%) in wetlands, but also occur (estimated probability 1% to 33%) in non-wetlands.	<i>Facultative Plants</i>	(FAC)	Plants with a similar likelihood (estimated probability 33% to 67%) of occurring in both wetlands and non-wetlands.	<i>Facultative Upland Plants</i>	(FACU)	Plants that occur sometimes (estimated probability 1% to <33%) in wetlands but occur more often (estimated probability >67% to 99%) in non-wetlands.	<i>Obligate Upland Plants</i>	(UPL)	Plants that occur rarely (estimated probability <1%) in wetlands but occur almost always (estimate probability >99%) in non-wetlands under natural conditions.
Indicator Category	Indicator Symbol	Definition																	
<i>Obligate Wetland Plants</i>	(OBL)	Plants that occur almost always (estimated probability >99%) in wetlands under natural conditions, but which may also occur rarely (estimated probability <1%) in non-wetlands.																	
<i>Facultative Wetland Plants</i>	(FACW)	Plants that occur usually (estimated probability >67% to 99%) in wetlands, but also occur (estimated probability 1% to 33%) in non-wetlands.																	
<i>Facultative Plants</i>	(FAC)	Plants with a similar likelihood (estimated probability 33% to 67%) of occurring in both wetlands and non-wetlands.																	
<i>Facultative Upland Plants</i>	(FACU)	Plants that occur sometimes (estimated probability 1% to <33%) in wetlands but occur more often (estimated probability >67% to 99%) in non-wetlands.																	
<i>Obligate Upland Plants</i>	(UPL)	Plants that occur rarely (estimated probability <1%) in wetlands but occur almost always (estimate probability >99%) in non-wetlands under natural conditions.																	
<i>Prevalence Index</i>	The prevalence index is a wetland indicator which takes into account all plant species and calculates a weighted average by assigning each indicator status category a numeric code (OBL = 1, FACW = 2, FAC = 3, FACU = 4, and UPL = 5). Plant species are also weighted by their abundance. It is a more comprehensive analysis of the hydrophytic status of a community than one based on a few dominant species. The prevalence index ranges from 1 to 5, and a prevalence index of 3.0 or less indicates that hydrophytic vegetation is present. If, using the dominance test, the recorded plant species does not exceed 50% of the total dominance, the prevalence index shall be used to determine if hydrophytic vegetation is present.																		
<i>Rapid Test for hydrophytic vegetation</i>	The Rapid Test is intended as a quick confirmation in obvious cases that a site has hydrophytic vegetation without the need for intensive sampling. When, based on visual assessment, all dominant species across all strata are rated OBL, FACW, or a combination of these two categories, the rapid test confirms hydrophytic vegetation is present at the site.																		
<i>Routine wetland determination</i>	A type of wetland determination in which office data and/or relatively simple, rapidly applied onsite methods are employed to determine whether or not an area is a wetland. Most wetland determinations are of this type, which usually does not require collection of quantitative data.																		
<i>Sample plot</i>	An area of land used for measuring or observing existing conditions																		
<i>Transect</i>	As used herein, a line on the ground along which observations are made at some interval																		
<i>Typically Adapted</i>	The term "typically adapted" refers to a species being normally or commonly suited to a given set of environmental conditions, due to some morphological, physiological, or reproductive adaptation. Species that have a wetland indicator status of OBL, FACW, or FAC are considered to be typically adapted for life in anaerobic soil conditions.																		
<i>Under normal circumstances</i>	As used in the definition of wetlands, this term refers to situations in which the vegetation has not been substantially altered by man's activities.																		
<i>Upland</i>	As used herein, any area that does not qualify as a wetland because the associated hydrologic regime is not sufficiently wet to elicit development of vegetation, soils, and/or hydrologic characteristics associated with wetlands. Such areas occurring within floodplains are more appropriately termed non-wetlands.																		

Term	Definition				
<i>Wetlands</i>	<p>The Corps of Engineers and the EPA jointly define wetlands as those areas that are inundated or saturated by surface or ground water at a frequency and duration sufficient to support, and that under normal circumstances do support, a prevalence of vegetation typically adapted for life in saturated soil conditions. Wetlands generally include swamps, marshes, bogs, and similar areas. Wetlands have the following general diagnostic environmental characteristics:</p> <ul style="list-style-type: none"> (1) Hydrophytic Vegetation (2) Hydric Soils (3) Wetland Hydrology <p>Except in unique situations defined in the 1987 Wetland Delineation Manual and appropriate Regional Supplement, evidence of a minimum of one positive wetland indicator from each parameter (hydrology, soil, and vegetation) must be found in order to make a positive wetland determination.</p>				
<i>Wetland boundary</i>	<p>The point on the ground at which a shift from wetlands to non-wetlands or aquatic habitats occurs. These boundaries usually follow contours.</p>				
<i>Wetland determination</i>	<p>The process or procedure by which an area is adjudged a wetland or non-wetland by the US Army Corps of Engineers.</p>				
<i>Wetland Hydrology</i>	<p>As defined by the 1987 COE Manual, the term “wetland hydrology” encompasses all hydrologic characteristics of areas that are periodically inundated (at mean water depths less than or equal to 6.6 feet) or have soils saturated to the surface at some time during the growing season of prevalent vegetation. Evident characteristics of wetland hydrology are generally found in areas where the presence of water has an overriding influence on characteristics of vegetation and soils due to anaerobic and reducing conditions.</p> <p>Wetland hydrology indicators provide evidence that the Site currently has a wetland hydrologic regime. They may not provide an abundance of information about long-term wetness conditions on a given site; however, when coupled with the presence of hydrophytic vegetation and hydric soils, hydrology indicators provide evidence of long-term as well as short-term wetland conditions. In order to meet the hydrology criteria of a wetland, a sample location must meet one primary indicator or two secondary indicators.</p> <table border="1" data-bbox="407 1245 1490 1885"> <thead> <tr> <th data-bbox="407 1245 976 1276"><i>Primary Indicators include:</i></th> <th data-bbox="976 1245 1490 1276"><i>Secondary Indicators include:</i></th> </tr> </thead> <tbody> <tr> <td data-bbox="407 1276 976 1885"> <ul style="list-style-type: none"> • Surface Water (A1) • High Water Table (A2) • Saturation (A3) • Water Marks (B1) • Sediment Deposits (B2) • Drift Deposits (B3) • Algal Mat or Crust (B4) • Iron Deposits (B5) • Inundation visible on Aerial Imagery (B7) • Water-Stained Leaves (B9) • Aquatic Fauna (B13) • Marl Deposits (B15) (LRR U) • Hydrogen Sulfide Odor (C1) • Oxidized Rhizospheres on Living Roots (C3) • Presence of Reduced Iron (C4) • Recent Iron Reduction in Tilled Soils (C6) • Thin Muck Surface (C7) • Other (Explain in Remarks) </td> <td data-bbox="976 1276 1490 1885"> <ul style="list-style-type: none"> • Surface Soil Cracks (B6) • Sparsely Vegetated Concave Surface (B8) • Drainage Patterns (B10) • Moss Trim Lines (B16) • Dry-Season Water Table (C2) • Crayfish Burrows (C8) • Saturation Visible on Aerial Imagery (C9) • Geomorphic Position (D2) • Shallow Aquitard (D3) • FAC-Neutral Test (D5) </td> </tr> </tbody> </table>	<i>Primary Indicators include:</i>	<i>Secondary Indicators include:</i>	<ul style="list-style-type: none"> • Surface Water (A1) • High Water Table (A2) • Saturation (A3) • Water Marks (B1) • Sediment Deposits (B2) • Drift Deposits (B3) • Algal Mat or Crust (B4) • Iron Deposits (B5) • Inundation visible on Aerial Imagery (B7) • Water-Stained Leaves (B9) • Aquatic Fauna (B13) • Marl Deposits (B15) (LRR U) • Hydrogen Sulfide Odor (C1) • Oxidized Rhizospheres on Living Roots (C3) • Presence of Reduced Iron (C4) • Recent Iron Reduction in Tilled Soils (C6) • Thin Muck Surface (C7) • Other (Explain in Remarks) 	<ul style="list-style-type: none"> • Surface Soil Cracks (B6) • Sparsely Vegetated Concave Surface (B8) • Drainage Patterns (B10) • Moss Trim Lines (B16) • Dry-Season Water Table (C2) • Crayfish Burrows (C8) • Saturation Visible on Aerial Imagery (C9) • Geomorphic Position (D2) • Shallow Aquitard (D3) • FAC-Neutral Test (D5)
<i>Primary Indicators include:</i>	<i>Secondary Indicators include:</i>				
<ul style="list-style-type: none"> • Surface Water (A1) • High Water Table (A2) • Saturation (A3) • Water Marks (B1) • Sediment Deposits (B2) • Drift Deposits (B3) • Algal Mat or Crust (B4) • Iron Deposits (B5) • Inundation visible on Aerial Imagery (B7) • Water-Stained Leaves (B9) • Aquatic Fauna (B13) • Marl Deposits (B15) (LRR U) • Hydrogen Sulfide Odor (C1) • Oxidized Rhizospheres on Living Roots (C3) • Presence of Reduced Iron (C4) • Recent Iron Reduction in Tilled Soils (C6) • Thin Muck Surface (C7) • Other (Explain in Remarks) 	<ul style="list-style-type: none"> • Surface Soil Cracks (B6) • Sparsely Vegetated Concave Surface (B8) • Drainage Patterns (B10) • Moss Trim Lines (B16) • Dry-Season Water Table (C2) • Crayfish Burrows (C8) • Saturation Visible on Aerial Imagery (C9) • Geomorphic Position (D2) • Shallow Aquitard (D3) • FAC-Neutral Test (D5) 				

APPENDIX A – DATA SHEETS

WETLAND DETERMINATION DATA FORM - Atlantic and Gulf Coastal Plain Region

Project/Site: Acadiana Regional Airport P5 Site **City/County:** Iberia **Sampling Date:** 26-Jun-25
Applicant/Owner: CSRS - One Acadiana **State:** LA **Sampling Point:** 1
Investigator(s): Ryne Menard **Section, Township, Range:** S 6 T 6E R 12S
Landform (hillslope, terrace, etc.): Flat **Local relief (concave, convex, none):** concave **Slope:** 1.0 % / 0.6 °
Subregion (LRR or MLRA): LRR T **Lat.:** 30°01'29.539" N **Long.:** 91°53'17.151" W **Datum:** UTM15S
Soil Map Unit Name: Ja: Jeanerette silt loam, 0 to 1 percent slopes **NWI classification:** NA

Are climatic/hydrologic conditions on the site typical for this time of year? Yes No (If no, explain in Remarks.)
Are Vegetation , **Soil** , **or Hydrology** **significantly disturbed?** **Are "Normal Circumstances" present?** Yes No
Are Vegetation , **Soil** , **or Hydrology** **naturally problematic?** (If needed, explain any answers in Remarks.)

SUMMARY OF FINDINGS - Attach site map showing sampling point locations, transects, important features, etc.

Hydrophytic Vegetation Present? Yes <input type="radio"/> No <input checked="" type="radio"/> Hydric Soil Present? Yes <input checked="" type="radio"/> No <input type="radio"/> Wetland Hydrology Present? Yes <input type="radio"/> No <input checked="" type="radio"/>	Is the Sampled Area within a Wetland? Yes <input type="radio"/> No <input checked="" type="radio"/>
Remarks:	

HYDROLOGY

Wetland Hydrology Indicators: Primary Indicators (minimum of one required; check all that apply)		Secondary Indicators (minimum of 2 required)
<input type="checkbox"/> Surface Water (A1) <input type="checkbox"/> High Water Table (A2) <input type="checkbox"/> Saturation (A3) <input type="checkbox"/> Water Marks (B1) <input type="checkbox"/> Sediment Deposits (B2) <input type="checkbox"/> Drift Deposits (B3) <input type="checkbox"/> Algal Mat or Crust (B4) <input type="checkbox"/> Iron Deposits (B5) <input type="checkbox"/> Inundation Visible on Aerial Imagery (B7) <input type="checkbox"/> Water-Stained Leaves (B9)	<input type="checkbox"/> Aquatic Fauna (B13) <input type="checkbox"/> Marl Deposits (B15) (LRR U) <input type="checkbox"/> Hydrogen Sulfide Odor (C1) <input type="checkbox"/> Oxidized Rhizospheres along Living Roots (C3) <input type="checkbox"/> Presence of Reduced Iron (C4) <input type="checkbox"/> Recent Iron Reduction in Tilled Soils (C6) <input type="checkbox"/> Thin Muck Surface (C7) <input type="checkbox"/> Other (Explain in Remarks)	<input type="checkbox"/> Surface Soil Cracks (B6) <input type="checkbox"/> Sparsely Vegetated Concave Surface (B8) <input type="checkbox"/> Drainage Patterns (B10) <input type="checkbox"/> Moss Trim Lines (B16) <input type="checkbox"/> Dry Season Water Table (C2) <input type="checkbox"/> Crayfish Burrows (C8) <input type="checkbox"/> Saturation Visible on Aerial Imagery (C9) <input type="checkbox"/> Geomorphic Position (D2) <input type="checkbox"/> Shallow Aquitard (D3) <input type="checkbox"/> FAC-Neutral Test (D5) <input type="checkbox"/> Sphagnum moss (D8) (LRR T, U)
Field Observations: Surface Water Present? Yes <input type="radio"/> No <input checked="" type="radio"/> Depth (inches): _____ Water Table Present? Yes <input type="radio"/> No <input checked="" type="radio"/> Depth (inches): _____ Saturation Present? (includes capillary fringe) Yes <input type="radio"/> No <input checked="" type="radio"/> Depth (inches): _____		Wetland Hydrology Present? Yes <input type="radio"/> No <input checked="" type="radio"/>
Describe Recorded Data (stream gauge, monitoring well, aerial photos, previous inspections), if available:		
Remarks: No indicators of hydrology observed		

VEGETATION (Five/Four Strata) - Use scientific names of plants.

Sampling Point: 1

Tree Stratum (Plot size: _____)		Absolute % Cover	Dominant Species? Rel.Strat. Cover	Indicator Status
1.	_____	0	<input type="checkbox"/> 0.0%	_____
2.	_____	0	<input type="checkbox"/> 0.0%	_____
3.	_____	0	<input type="checkbox"/> 0.0%	_____
4.	_____	0	<input type="checkbox"/> 0.0%	_____
5.	_____	0	<input type="checkbox"/> 0.0%	_____
6.	_____	0	<input type="checkbox"/> 0.0%	_____
7.	_____	0	<input type="checkbox"/> 0.0%	_____
8.	_____	0	<input type="checkbox"/> 0.0%	_____
50% of Total Cover: <u>0</u>		20% of Total Cover: <u>0</u>	<u>0</u>	= Total Cover
Sapling or Sapling/Shrub Stratum (Plot size: _____)				
1.	_____	0	<input type="checkbox"/> 0.0%	_____
2.	_____	0	<input type="checkbox"/> 0.0%	_____
3.	_____	0	<input type="checkbox"/> 0.0%	_____
4.	_____	0	<input type="checkbox"/> 0.0%	_____
5.	_____	0	<input type="checkbox"/> 0.0%	_____
6.	_____	0	<input type="checkbox"/> 0.0%	_____
7.	_____	0	<input type="checkbox"/> 0.0%	_____
8.	_____	0	<input type="checkbox"/> 0.0%	_____
50% of Total Cover: <u>0</u>		20% of Total Cover: <u>0</u>	<u>0</u>	= Total Cover
Shrub Stratum (Plot size: _____)				
1.	_____	0	<input type="checkbox"/> 0.0%	_____
2.	_____	0	<input type="checkbox"/> 0.0%	_____
3.	_____	0	<input type="checkbox"/> 0.0%	_____
4.	_____	0	<input type="checkbox"/> 0.0%	_____
5.	_____	0	<input type="checkbox"/> 0.0%	_____
6.	_____	0	<input type="checkbox"/> 0.0%	_____
50% of Total Cover: <u>0</u>		20% of Total Cover: <u>0</u>	<u>0</u>	= Total Cover
Herb Stratum (Plot size: <u>30'</u>)				
1.	<u>Cynodon dactylon</u>	75	<input checked="" type="checkbox"/> 57.7%	FACU
2.	<u>Setaria viridis</u>	10	<input type="checkbox"/> 7.7%	UPL
3.	<u>Rottboellia cochinchinensis</u>	15	<input type="checkbox"/> 11.5%	FACU
4.	<u>Sorghum halepense</u>	10	<input type="checkbox"/> 7.7%	FACU
5.	<u>Paspalum dilatatum</u>	20	<input type="checkbox"/> 15.4%	FAC
6.	<u>Paspalum notatum</u>	0	<input type="checkbox"/> 0.0%	FACU
7.	_____	0	<input type="checkbox"/> 0.0%	_____
8.	_____	0	<input type="checkbox"/> 0.0%	_____
9.	_____	0	<input type="checkbox"/> 0.0%	_____
10.	_____	0	<input type="checkbox"/> 0.0%	_____
11.	_____	0	<input type="checkbox"/> 0.0%	_____
12.	_____	0	<input type="checkbox"/> 0.0%	_____
50% of Total Cover: <u>65</u>		20% of Total Cover: <u>26</u>	<u>130</u>	= Total Cover
Woody Vine Stratum (Plot size: _____)				
1.	_____	0	<input type="checkbox"/> 0.0%	_____
2.	_____	0	<input type="checkbox"/> 0.0%	_____
3.	_____	0	<input type="checkbox"/> 0.0%	_____
4.	_____	0	<input type="checkbox"/> 0.0%	_____
5.	_____	0	<input type="checkbox"/> 0.0%	_____
50% of Total Cover: <u>0</u>		20% of Total Cover: <u>0</u>	<u>0</u>	= Total Cover

Dominance Test worksheet:

Number of Dominant Species That are OBL, FACW, or FAC: 0 (A)

Total Number of Dominant Species Across All Strata: 1 (B)

Percent of dominant Species That Are OBL, FACW, or FAC: 0.0% (A/B)

Prevalence Index worksheet:

Total % Cover of: _____ Multiply by: _____

OBL species 0 x 1 = 0

FACW species 0 x 2 = 0

FAC species 20 x 3 = 60

FACU species 100 x 4 = 400

UPL species 10 x 5 = 50

Column Totals: 130 (A) 510 (B)

Prevalence Index = B/A = 3.923

- Hydrophytic Vegetation Indicators:**
- 1 - Rapid Test for Hydrophytic Vegetation
 - 2 - Dominance Test is > 50%
 - 3 - Prevalence Index is ≤3.0¹
 - Problematic Hydrophytic Vegetation¹ (Explain)
- ¹ Indicators of hydric soil and wetland hydrology must be present, unless disturbed or problematic.

Definition of Vegetation Strata:

Tree - Woody plants, excluding woody vines, approximately 20 ft (6 m) or more in height and 3 in. (7.6 cm) or larger in diameter at breast height (DBH).

Sapling - Woody plants, excluding woody vines, approximately 20 ft (6 m) or more in height and less than 3 in. (7.6 cm) DBH.

Sapling/Shrub - Woody plants, excluding vines, less than 3 in. DBH and greater than 3.28 ft (1m) tall.

Shrub - Woody plants, excluding woody vines, approximately 3 to 20 ft (1 to 6 m) in height.

Herb - All herbaceous (non-woody) plants, including herbaceous vines, regardless of size, and woody plants, except woody vines, less than approximately 3 ft (1 m) in height.

Woody vine - All woody vines, regardless of height.

Hydrophytic Vegetation Present? Yes No

Remarks: (If observed, list morphological adaptations below).

*Indicator suffix = National status or professional decision assigned because Regional status not defined by FWS.

SOIL

Sampling Point: 1

Profile Description: (Describe to the depth needed to document the indicator or confirm the absence of indicators.)

Depth (inches)	Matrix			Redox Features					Texture	Remarks
	Color (moist)		%	Color (moist)	%	Tvpe ¹	Loc ²			
0-3	10YR	2/1	65	2.5Y	6/2	20	C	M	Clay Loam	
				10YR	6/8	15	C	M		
3-12	10YR	2/1	95	2.5Y	6/2	5	C	M	Clay Loam	
12-16	10YR	2/1	100						Clay Loam	

¹ Type: C=Concentration. D=Depletion. RM=Reduced Matrix, CS=Covered or Coated Sand Grains ²Location: PL=Pore Lining. M=Matrix

Hydric Soil Indicators:

- Histosol (A1)
- Histic Epipedon (A2)
- Black Histic (A3)
- Hydrogen Sulfide (A4)
- Stratified Layers (A5)
- Organic Bodies (A6) (LRR P, T, U)
- 5 cm Mucky Mineral (A7) (LRR P, T, U)
- Muck Presence (A8) (LRR U)
- 1 cm Muck (A9) (LRR P, T)
- Depleted Below Dark Surface (A11)
- Thick Dark Surface (A12)
- Coast Prairie Redox (A16) (MLRA 150A)
- Sandy Muck Mineral (S1) (LRR O, S)
- Sandy Gleyed Matrix (S4)
- Sandy Redox (S5)
- Stripped Matrix (S6)
- Dark Surface (S7) (LRR P, S, T, U)

- Polyvalue Below Surface (S8) (LRR S, T, U)
- Thin Dark Surface (S9) (LRR S, T, U)
- Loamy Mucky Mineral (F1) (LRR O)
- Loamy Gleyed Matrix (F2)
- Depleted Matrix (F3)
- Redox Dark Surface (F6)
- Depleted Dark Surface (F7)
- Redox Depressions (F8)
- Marl (F10) (LRR U)
- Depleted Ochric (F11) (MLRA 151)
- Iron-Manganese Masses (F12) (LRR O, P, T)
- Umbric Surface (F13) (LRR P, T, U)
- Delta Ochric (F17) (MLRA 151)
- Reduced Vertic (F18) (MLRA 150A, 150B)
- Piedmont Floodplain Soils (F19) (MLRA 149A)
- Anomalous Bright Loamy Soils (F20) (MLRA 149A, 153C, 153D)

Indicators for Problematic Hydric Soils³:

- 1 cm Muck (A9) (LRR O)
- 2 cm Muck (A10) (LRR S)
- Reduced Vertic (F18) (outside MLRA 150A,B)
- Piedmont Floodplain Soils (F19) (LRR P, S, T)
- Anomalous Bright Loamy Soils (F20) (MLRA 153B)
- Red Parent Material (TF2)
- Very Shallow Dark Surface (TF12)
- Other (Explain in Remarks)

³Indicators of hydrophytic vegetation and wetland hydrology must be present, unless disturbed or problematic.

Restrictive Layer (if observed):

Type: _____
 Depth (inches): _____

Hydric Soil Present? Yes No

Remarks:

WETLAND DETERMINATION DATA FORM - Atlantic and Gulf Coastal Plain Region

Project/Site: Acadiana Regional Airport P5 Site **City/County:** Iberia **Sampling Date:** 26-Jun-25
Applicant/Owner: CSRS - One Acadiana **State:** LA **Sampling Point:** 2
Investigator(s): Ryne Menard **Section, Township, Range:** S 8 T 6E R 12S
Landform (hillslope, terrace, etc.): Flat **Local relief (concave, convex, none):** convex **Slope:** 1.0 % / 0.6 °
Subregion (LRR or MLRA): LRR T **Lat.:** 30°01'18.737" N **Long.:** 91°53'09.608" W **Datum:** UTM15S
Soil Map Unit Name: Ja: Jeanerette silt loam, 0 to 1 percent slopes **NWI classification:** NA

Are climatic/hydrologic conditions on the site typical for this time of year? Yes No (If no, explain in Remarks.)
Are Vegetation , **Soil** , **or Hydrology** **significantly disturbed?** **Are "Normal Circumstances" present?** Yes No
Are Vegetation , **Soil** , **or Hydrology** **naturally problematic?** (If needed, explain any answers in Remarks.)

SUMMARY OF FINDINGS - Attach site map showing sampling point locations, transects, important features, etc.

Hydrophytic Vegetation Present? Yes <input type="radio"/> No <input checked="" type="radio"/> Hydric Soil Present? Yes <input checked="" type="radio"/> No <input type="radio"/> Wetland Hydrology Present? Yes <input type="radio"/> No <input checked="" type="radio"/>	Is the Sampled Area within a Wetland? Yes <input type="radio"/> No <input checked="" type="radio"/>
Remarks:	

HYDROLOGY

Wetland Hydrology Indicators: Primary Indicators (minimum of one required; check all that apply)		Secondary Indicators (minimum of 2 required)
<input type="checkbox"/> Surface Water (A1) <input type="checkbox"/> High Water Table (A2) <input type="checkbox"/> Saturation (A3) <input type="checkbox"/> Water Marks (B1) <input type="checkbox"/> Sediment Deposits (B2) <input type="checkbox"/> Drift Deposits (B3) <input type="checkbox"/> Algal Mat or Crust (B4) <input type="checkbox"/> Iron Deposits (B5) <input type="checkbox"/> Inundation Visible on Aerial Imagery (B7) <input type="checkbox"/> Water-Stained Leaves (B9)	<input type="checkbox"/> Aquatic Fauna (B13) <input type="checkbox"/> Marl Deposits (B15) (LRR U) <input type="checkbox"/> Hydrogen Sulfide Odor (C1) <input type="checkbox"/> Oxidized Rhizospheres along Living Roots (C3) <input type="checkbox"/> Presence of Reduced Iron (C4) <input type="checkbox"/> Recent Iron Reduction in Tilled Soils (C6) <input type="checkbox"/> Thin Muck Surface (C7) <input type="checkbox"/> Other (Explain in Remarks)	<input type="checkbox"/> Surface Soil Cracks (B6) <input type="checkbox"/> Sparsely Vegetated Concave Surface (B8) <input type="checkbox"/> Drainage Patterns (B10) <input type="checkbox"/> Moss Trim Lines (B16) <input type="checkbox"/> Dry Season Water Table (C2) <input type="checkbox"/> Crayfish Burrows (C8) <input type="checkbox"/> Saturation Visible on Aerial Imagery (C9) <input type="checkbox"/> Geomorphic Position (D2) <input type="checkbox"/> Shallow Aquitard (D3) <input type="checkbox"/> FAC-Neutral Test (D5) <input type="checkbox"/> Sphagnum moss (D8) (LRR T, U)
Field Observations: Surface Water Present? Yes <input type="radio"/> No <input checked="" type="radio"/> Depth (inches): _____ Water Table Present? Yes <input type="radio"/> No <input checked="" type="radio"/> Depth (inches): _____ Saturation Present? (includes capillary fringe) Yes <input type="radio"/> No <input checked="" type="radio"/> Depth (inches): _____		Wetland Hydrology Present? Yes <input type="radio"/> No <input checked="" type="radio"/>
Describe Recorded Data (stream gauge, monitoring well, aerial photos, previous inspections), if available:		
Remarks:		

VEGETATION (Five/Four Strata) - Use scientific names of plants.

Sampling Point: 2

Tree Stratum (Plot size: _____)		Absolute % Cover	Dominant Species? Rel.Strat. Cover	Indicator Status
1.	_____	0	<input type="checkbox"/> 0.0%	_____
2.	_____	0	<input type="checkbox"/> 0.0%	_____
3.	_____	0	<input type="checkbox"/> 0.0%	_____
4.	_____	0	<input type="checkbox"/> 0.0%	_____
5.	_____	0	<input type="checkbox"/> 0.0%	_____
6.	_____	0	<input type="checkbox"/> 0.0%	_____
7.	_____	0	<input type="checkbox"/> 0.0%	_____
8.	_____	0	<input type="checkbox"/> 0.0%	_____
50% of Total Cover: <u>0</u> 20% of Total Cover: <u>0</u>		0	= Total Cover	
Sapling or Sapling/Shrub Stratum (Plot size: _____)		Absolute % Cover	Dominant Species? Rel.Strat. Cover	Indicator Status
1.	_____	0	<input type="checkbox"/> 0.0%	_____
2.	_____	0	<input type="checkbox"/> 0.0%	_____
3.	_____	0	<input type="checkbox"/> 0.0%	_____
4.	_____	0	<input type="checkbox"/> 0.0%	_____
5.	_____	0	<input type="checkbox"/> 0.0%	_____
6.	_____	0	<input type="checkbox"/> 0.0%	_____
7.	_____	0	<input type="checkbox"/> 0.0%	_____
8.	_____	0	<input type="checkbox"/> 0.0%	_____
50% of Total Cover: <u>0</u> 20% of Total Cover: <u>0</u>		0	= Total Cover	
Shrub Stratum (Plot size: _____)		Absolute % Cover	Dominant Species? Rel.Strat. Cover	Indicator Status
1.	_____	0	<input type="checkbox"/> 0.0%	_____
2.	_____	0	<input type="checkbox"/> 0.0%	_____
3.	_____	0	<input type="checkbox"/> 0.0%	_____
4.	_____	0	<input type="checkbox"/> 0.0%	_____
5.	_____	0	<input type="checkbox"/> 0.0%	_____
6.	_____	0	<input type="checkbox"/> 0.0%	_____
50% of Total Cover: <u>0</u> 20% of Total Cover: <u>0</u>		0	= Total Cover	
Herb Stratum (Plot size: <u>30'</u>)		Absolute % Cover	Dominant Species? Rel.Strat. Cover	Indicator Status
1.	<u>Cynodon dactylon</u>	55	<input checked="" type="checkbox"/> 57.9%	FACU
2.	<u>Sorghum halepense</u>	15	<input type="checkbox"/> 15.8%	FACU
3.	<u>Cyperus esculentus</u>	5	<input type="checkbox"/> 5.3%	FAC
4.	<u>Euphorbia hyssopifolia</u>	5	<input type="checkbox"/> 5.3%	FAC
5.	<u>Rubus trivialis</u>	10	<input type="checkbox"/> 10.5%	FACU
6.	<u>Sesbania herbacea</u>	5	<input type="checkbox"/> 5.3%	FACW
7.	_____	0	<input type="checkbox"/> 0.0%	_____
8.	_____	0	<input type="checkbox"/> 0.0%	_____
9.	_____	0	<input type="checkbox"/> 0.0%	_____
10.	_____	0	<input type="checkbox"/> 0.0%	_____
11.	_____	0	<input type="checkbox"/> 0.0%	_____
12.	_____	0	<input type="checkbox"/> 0.0%	_____
50% of Total Cover: <u>47.5</u> 20% of Total Cover: <u>19</u>		95	= Total Cover	
Woody Vine Stratum (Plot size: _____)		Absolute % Cover	Dominant Species? Rel.Strat. Cover	Indicator Status
1.	_____	0	<input type="checkbox"/> 0.0%	_____
2.	_____	0	<input type="checkbox"/> 0.0%	_____
3.	_____	0	<input type="checkbox"/> 0.0%	_____
4.	_____	0	<input type="checkbox"/> 0.0%	_____
5.	_____	0	<input type="checkbox"/> 0.0%	_____
50% of Total Cover: <u>0</u> 20% of Total Cover: <u>0</u>		0	= Total Cover	

Dominance Test worksheet:

Number of Dominant Species That are OBL, FACW, or FAC: 0 (A)

Total Number of Dominant Species Across All Strata: 1 (B)

Percent of dominant Species That Are OBL, FACW, or FAC: 0.0% (A/B)

Prevalence Index worksheet:

Total % Cover of: _____ Multiply by: _____

OBL species 0 x 1 = 0

FACW species 5 x 2 = 10

FAC species 10 x 3 = 30

FACU species 80 x 4 = 320

UPL species 0 x 5 = 0

Column Totals: 95 (A) 360 (B)

Prevalence Index = B/A = 3.789

Hydrophytic Vegetation Indicators:

1 - Rapid Test for Hydrophytic Vegetation

2 - Dominance Test is > 50%

3 - Prevalence Index is ≤ 3.0¹

Problematic Hydrophytic Vegetation¹ (Explain)

¹ Indicators of hydric soil and wetland hydrology must be present, unless disturbed or problematic.

Definition of Vegetation Strata:

Tree - Woody plants, excluding woody vines, approximately 20 ft (6 m) or more in height and 3 in. (7.6 cm) or larger in diameter at breast height (DBH).

Sapling - Woody plants, excluding woody vines, approximately 20 ft (6 m) or more in height and less than 3 in. (7.6 cm) DBH.

Sapling/Shrub - Woody plants, excluding vines, less than 3 in. DBH and greater than 3.28 ft (1m) tall.

Shrub - Woody plants, excluding woody vines, approximately 3 to 20 ft (1 to 6 m) in height.

Herb - All herbaceous (non-woody) plants, including herbaceous vines, regardless of size, and woody plants, except woody vines, less than approximately 3 ft (1 m) in height.

Woody vine - All woody vines, regardless of height.

Hydrophytic Vegetation Present? Yes No

Remarks: (If observed, list morphological adaptations below).

*Indicator suffix = National status or professional decision assigned because Regional status not defined by FWS.

SOIL

Sampling Point: 2

Profile Description: (Describe to the depth needed to document the indicator or confirm the absence of indicators.)

Depth (inches)	Matrix		Redox Features					Texture	Remarks
	Color (moist)	%	Color (moist)	%	Tvpe ¹	Loc ²			
0-4	10YR	3/2	100					Clay Loam	
4-11	2.5Y	7/2	45	10YR	3/2	30	C	M	Clay Loam
				10YR	6/8	15	C	M	
				10YR	2/1	10	C	M	
11-20	10YR	2/1	95	10YR	3/6	5	C	M	Clay Loam

¹Type: C=Concentration. D=Depletion. RM=Reduced Matrix, CS=Covered or Coated Sand Grains ²Location: PL=Pore Lining. M=Matrix

Hydric Soil Indicators:

- Histosol (A1)
- Histic Epipedon (A2)
- Black Histic (A3)
- Hydrogen Sulfide (A4)
- Stratified Layers (A5)
- Organic Bodies (A6) (LRR P, T, U)
- 5 cm Mucky Mineral (A7) (LRR P, T, U)
- Muck Presence (A8) (LRR U)
- 1 cm Muck (A9) (LRR P, T)
- Depleted Below Dark Surface (A11)
- Thick Dark Surface (A12)
- Coast Prairie Redox (A16) (MLRA 150A)
- Sandy Muck Mineral (S1) (LRR O, S)
- Sandy Gleyed Matrix (S4)
- Sandy Redox (S5)
- Stripped Matrix (S6)
- Dark Surface (S7) (LRR P, S, T, U)

- Polyvalue Below Surface (S8) (LRR S, T, U)
- Thin Dark Surface (S9) (LRR S, T, U)
- Loamy Mucky Mineral (F1) (LRR O)
- Loamy Gleyed Matrix (F2)
- Depleted Matrix (F3)
- Redox Dark Surface (F6)
- Depleted Dark Surface (F7)
- Redox Depressions (F8)
- Marl (F10) (LRR U)
- Depleted Ochric (F11) (MLRA 151)
- Iron-Manganese Masses (F12) (LRR O, P, T)
- Umbric Surface (F13) (LRR P, T, U)
- Delta Ochric (F17) (MLRA 151)
- Reduced Vertic (F18) (MLRA 150A, 150B)
- Piedmont Floodplain Soils (F19) (MLRA 149A)
- Anomalous Bright Loamy Soils (F20) (MLRA 149A, 153C, 153D)

Indicators for Problematic Hydric Soils³:

- 1 cm Muck (A9) (LRR O)
- 2 cm Muck (A10) (LRR S)
- Reduced Vertic (F18) (outside MLRA 150A,B)
- Piedmont Floodplain Soils (F19) (LRR P, S, T)
- Anomalous Bright Loamy Soils (F20) (MLRA 153B)
- Red Parent Material (TF2)
- Very Shallow Dark Surface (TF12)
- Other (Explain in Remarks)

³Indicators of hydrophytic vegetation and wetland hydrology must be present, unless disturbed or problematic.

Restrictive Layer (if observed):

Type: _____
 Depth (inches): _____

Hydric Soil Present? Yes No

Remarks:

WETLAND DETERMINATION DATA FORM - Atlantic and Gulf Coastal Plain Region

Project/Site: Acadiana Regional Airport P5 Site **City/County:** Iberia **Sampling Date:** 26-Jun-25
Applicant/Owner: CSRS - One Acadiana **State:** LA **Sampling Point:** 3
Investigator(s): Ryne Menard **Section, Township, Range:** S 8 T 6E R 12S
Landform (hillslope, terrace, etc.): Flat **Local relief (concave, convex, none):** concave **Slope:** 1.0 % / 0.6 °
Subregion (LRR or MLRA): LRR T **Lat.:** 30°00'59.828" N **Long.:** 91°52'54.702" W **Datum:** UTM15S
Soil Map Unit Name: Ja: Jeanerette silt loam, 0 to 1 percent slopes **NWI classification:** NA

Are climatic/hydrologic conditions on the site typical for this time of year? Yes No (If no, explain in Remarks.)
Are Vegetation , **Soil** , **or Hydrology** **significantly disturbed?** **Are "Normal Circumstances" present?** Yes No
Are Vegetation , **Soil** , **or Hydrology** **naturally problematic?** (If needed, explain any answers in Remarks.)

SUMMARY OF FINDINGS - Attach site map showing sampling point locations, transects, important features, etc.

Hydrophytic Vegetation Present? Yes <input type="radio"/> No <input checked="" type="radio"/> Hydric Soil Present? Yes <input checked="" type="radio"/> No <input type="radio"/> Wetland Hydrology Present? Yes <input type="radio"/> No <input checked="" type="radio"/>	Is the Sampled Area within a Wetland? Yes <input type="radio"/> No <input checked="" type="radio"/>
Remarks:	

HYDROLOGY

Wetland Hydrology Indicators: Primary Indicators (minimum of one required; check all that apply)		Secondary Indicators (minimum of 2 required)
<input type="checkbox"/> Surface Water (A1) <input type="checkbox"/> High Water Table (A2) <input type="checkbox"/> Saturation (A3) <input type="checkbox"/> Water Marks (B1) <input type="checkbox"/> Sediment Deposits (B2) <input type="checkbox"/> Drift Deposits (B3) <input type="checkbox"/> Algal Mat or Crust (B4) <input type="checkbox"/> Iron Deposits (B5) <input type="checkbox"/> Inundation Visible on Aerial Imagery (B7) <input type="checkbox"/> Water-Stained Leaves (B9)	<input type="checkbox"/> Aquatic Fauna (B13) <input type="checkbox"/> Marl Deposits (B15) (LRR U) <input type="checkbox"/> Hydrogen Sulfide Odor (C1) <input type="checkbox"/> Oxidized Rhizospheres along Living Roots (C3) <input type="checkbox"/> Presence of Reduced Iron (C4) <input type="checkbox"/> Recent Iron Reduction in Tilled Soils (C6) <input type="checkbox"/> Thin Muck Surface (C7) <input type="checkbox"/> Other (Explain in Remarks)	<input type="checkbox"/> Surface Soil Cracks (B6) <input type="checkbox"/> Sparsely Vegetated Concave Surface (B8) <input type="checkbox"/> Drainage Patterns (B10) <input type="checkbox"/> Moss Trim Lines (B16) <input type="checkbox"/> Dry Season Water Table (C2) <input type="checkbox"/> Crayfish Burrows (C8) <input type="checkbox"/> Saturation Visible on Aerial Imagery (C9) <input type="checkbox"/> Geomorphic Position (D2) <input type="checkbox"/> Shallow Aquitard (D3) <input type="checkbox"/> FAC-Neutral Test (D5) <input type="checkbox"/> Sphagnum moss (D8) (LRR T, U)
Field Observations: Surface Water Present? Yes <input type="radio"/> No <input checked="" type="radio"/> Depth (inches): _____ Water Table Present? Yes <input type="radio"/> No <input checked="" type="radio"/> Depth (inches): _____ Saturation Present? (includes capillary fringe) Yes <input type="radio"/> No <input checked="" type="radio"/> Depth (inches): _____		Wetland Hydrology Present? Yes <input type="radio"/> No <input checked="" type="radio"/>
Describe Recorded Data (stream gauge, monitoring well, aerial photos, previous inspections), if available:		
Remarks:		

SOIL

Sampling Point: **3**

Profile Description: (Describe to the depth needed to document the indicator or confirm the absence of indicators.)

Depth (inches)	Matrix			Redox Features					Texture	Remarks
	Color (moist)		%	Color (moist)	%	Tvpe ¹	Loc ²			
0-5	10YR	3/2	85	2.5Y	7/2	10	C	M	Clay Loam	
				10YR	2/1	5	C	M		
5-11	10YR	3/2	90	10YR	2/1	5	C	M	Clay Loam	
				10YR	3/6	5	C	M		
11-20	10YR	3/1	75	10YR	4/6	10	C	M	Clay Loam	
				10YR	2/1	15	C	M		

¹Type: C=Concentration. D=Depletion. RM=Reduced Matrix, CS=Covered or Coated Sand Grains ²Location: PL=Pore Lining. M=Matrix

Hydric Soil Indicators:

- Histosol (A1)
- Histic Epipedon (A2)
- Black Histic (A3)
- Hydrogen Sulfide (A4)
- Stratified Layers (A5)
- Organic Bodies (A6) (LRR P, T, U)
- 5 cm Mucky Mineral (A7) (LRR P, T, U)
- Muck Presence (A8) (LRR U)
- 1 cm Muck (A9) (LRR P, T)
- Depleted Below Dark Surface (A11)
- Thick Dark Surface (A12)
- Coast Prairie Redox (A16) (MLRA 150A)
- Sandy Muck Mineral (S1) (LRR O, S)
- Sandy Gleyed Matrix (S4)
- Sandy Redox (S5)
- Stripped Matrix (S6)
- Dark Surface (S7) (LRR P, S, T, U)

- Polyvalue Below Surface (S8) (LRR S, T, U)
- Thin Dark Surface (S9) (LRR S, T, U)
- Loamy Mucky Mineral (F1) (LRR O)
- Loamy Gleyed Matrix (F2)
- Depleted Matrix (F3)
- Redox Dark Surface (F6)
- Depleted Dark Surface (F7)
- Redox Depressions (F8)
- Marl (F10) (LRR U)
- Depleted Ochric (F11) (MLRA 151)
- Iron-Manganese Masses (F12) (LRR O, P, T)
- Umbric Surface (F13) (LRR P, T, U)
- Delta Ochric (F17) (MLRA 151)
- Reduced Vertic (F18) (MLRA 150A, 150B)
- Piedmont Floodplain Soils (F19) (MLRA 149A)
- Anomalous Bright Loamy Soils (F20) (MLRA 149A, 153C, 153D)

Indicators for Problematic Hydric Soils³:

- 1 cm Muck (A9) (LRR O)
- 2 cm Muck (A10) (LRR S)
- Reduced Vertic (F18) (outside MLRA 150A,B)
- Piedmont Floodplain Soils (F19) (LRR P, S, T)
- Anomalous Bright Loamy Soils (F20) (MLRA 153B)
- Red Parent Material (TF2)
- Very Shallow Dark Surface (TF12)
- Other (Explain in Remarks)

³Indicators of hydrophytic vegetation and wetland hydrology must be present, unless disturbed or problematic.

Restrictive Layer (if observed):

Type: _____
 Depth (inches): _____

Hydric Soil Present? Yes No

Remarks:

WETLAND DETERMINATION DATA FORM - Atlantic and Gulf Coastal Plain Region

Project/Site: Acadiana Regional Airport P5 Site **City/County:** Iberia **Sampling Date:** 26-Jun-25
Applicant/Owner: CSRS - One Acadiana **State:** LA **Sampling Point:** 4
Investigator(s): Ryne Menard **Section, Township, Range:** S 8 T 6E R 12S
Landform (hillslope, terrace, etc.): Flat **Local relief (concave, convex, none):** concave **Slope:** 1.0 % / 0.6 °
Subregion (LRR or MLRA): LRR T **Lat.:** 30°00'44.012" N **Long.:** 91°53'01.341" W **Datum:** UTM15S
Soil Map Unit Name: Ja: Jeanerette silt loam, 0 to 1 percent slopes **NWI classification:** NA

Are climatic/hydrologic conditions on the site typical for this time of year? Yes No (If no, explain in Remarks.)
Are Vegetation , **Soil** , **or Hydrology** **significantly disturbed?** **Are "Normal Circumstances" present?** Yes No
Are Vegetation , **Soil** , **or Hydrology** **naturally problematic?** (If needed, explain any answers in Remarks.)

SUMMARY OF FINDINGS - Attach site map showing sampling point locations, transects, important features, etc.

Hydrophytic Vegetation Present? Yes <input type="radio"/> No <input checked="" type="radio"/> Hydric Soil Present? Yes <input checked="" type="radio"/> No <input type="radio"/> Wetland Hydrology Present? Yes <input type="radio"/> No <input checked="" type="radio"/>	Is the Sampled Area within a Wetland? Yes <input type="radio"/> No <input checked="" type="radio"/>
Remarks:	

HYDROLOGY

Wetland Hydrology Indicators: Primary Indicators (minimum of one required; check all that apply)		Secondary Indicators (minimum of 2 required)
<input type="checkbox"/> Surface Water (A1) <input type="checkbox"/> High Water Table (A2) <input type="checkbox"/> Saturation (A3) <input type="checkbox"/> Water Marks (B1) <input type="checkbox"/> Sediment Deposits (B2) <input type="checkbox"/> Drift Deposits (B3) <input type="checkbox"/> Algal Mat or Crust (B4) <input type="checkbox"/> Iron Deposits (B5) <input type="checkbox"/> Inundation Visible on Aerial Imagery (B7) <input type="checkbox"/> Water-Stained Leaves (B9)	<input type="checkbox"/> Aquatic Fauna (B13) <input type="checkbox"/> Marl Deposits (B15) (LRR U) <input type="checkbox"/> Hydrogen Sulfide Odor (C1) <input type="checkbox"/> Oxidized Rhizospheres along Living Roots (C3) <input type="checkbox"/> Presence of Reduced Iron (C4) <input type="checkbox"/> Recent Iron Reduction in Tilled Soils (C6) <input type="checkbox"/> Thin Muck Surface (C7) <input type="checkbox"/> Other (Explain in Remarks)	<input type="checkbox"/> Surface Soil Cracks (B6) <input type="checkbox"/> Sparsely Vegetated Concave Surface (B8) <input type="checkbox"/> Drainage Patterns (B10) <input type="checkbox"/> Moss Trim Lines (B16) <input type="checkbox"/> Dry Season Water Table (C2) <input type="checkbox"/> Crayfish Burrows (C8) <input type="checkbox"/> Saturation Visible on Aerial Imagery (C9) <input type="checkbox"/> Geomorphic Position (D2) <input type="checkbox"/> Shallow Aquitard (D3) <input type="checkbox"/> FAC-Neutral Test (D5) <input type="checkbox"/> Sphagnum moss (D8) (LRR T, U)
Field Observations: Surface Water Present? Yes <input type="radio"/> No <input checked="" type="radio"/> Depth (inches): _____ Water Table Present? Yes <input type="radio"/> No <input checked="" type="radio"/> Depth (inches): _____ Saturation Present? (includes capillary fringe) Yes <input type="radio"/> No <input checked="" type="radio"/> Depth (inches): _____		Wetland Hydrology Present? Yes <input type="radio"/> No <input checked="" type="radio"/>
Describe Recorded Data (stream gauge, monitoring well, aerial photos, previous inspections), if available:		
Remarks:		

VEGETATION (Five/Four Strata) - Use scientific names of plants.

Sampling Point: 4

Tree Stratum (Plot size: _____)		Absolute % Cover	Dominant Species? Rel.Strat. Cover	Indicator Status
1.	_____	0	<input type="checkbox"/> 0.0%	_____
2.	_____	0	<input type="checkbox"/> 0.0%	_____
3.	_____	0	<input type="checkbox"/> 0.0%	_____
4.	_____	0	<input type="checkbox"/> 0.0%	_____
5.	_____	0	<input type="checkbox"/> 0.0%	_____
6.	_____	0	<input type="checkbox"/> 0.0%	_____
7.	_____	0	<input type="checkbox"/> 0.0%	_____
8.	_____	0	<input type="checkbox"/> 0.0%	_____
50% of Total Cover: <u>0</u> 20% of Total Cover: <u>0</u>		<u>0</u>	= Total Cover	
Sapling or Sapling/Shrub Stratum (Plot size: _____)		Absolute % Cover	Dominant Species? Rel.Strat. Cover	Indicator Status
1.	_____	0	<input type="checkbox"/> 0.0%	_____
2.	_____	0	<input type="checkbox"/> 0.0%	_____
3.	_____	0	<input type="checkbox"/> 0.0%	_____
4.	_____	0	<input type="checkbox"/> 0.0%	_____
5.	_____	0	<input type="checkbox"/> 0.0%	_____
6.	_____	0	<input type="checkbox"/> 0.0%	_____
7.	_____	0	<input type="checkbox"/> 0.0%	_____
8.	_____	0	<input type="checkbox"/> 0.0%	_____
50% of Total Cover: <u>0</u> 20% of Total Cover: <u>0</u>		<u>0</u>	= Total Cover	
Shrub Stratum (Plot size: _____)		Absolute % Cover	Dominant Species? Rel.Strat. Cover	Indicator Status
1.	_____	0	<input type="checkbox"/> 0.0%	_____
2.	_____	0	<input type="checkbox"/> 0.0%	_____
3.	_____	0	<input type="checkbox"/> 0.0%	_____
4.	_____	0	<input type="checkbox"/> 0.0%	_____
5.	_____	0	<input type="checkbox"/> 0.0%	_____
6.	_____	0	<input type="checkbox"/> 0.0%	_____
50% of Total Cover: <u>0</u> 20% of Total Cover: <u>0</u>		<u>0</u>	= Total Cover	
Herb Stratum (Plot size: <u>30'</u>)		Absolute % Cover	Dominant Species? Rel.Strat. Cover	Indicator Status
1.	<u>Cynodon dactylon</u>	<u>75</u>	<input checked="" type="checkbox"/> <u>65.2%</u>	<u>FACU</u>
2.	<u>Saccharum officinarum</u>	<u>5</u>	<input type="checkbox"/> <u>4.3%</u>	<u>FACU</u>
3.	<u>Rottboellia cochinchinensis</u>	<u>15</u>	<input type="checkbox"/> <u>13.0%</u>	<u>FACU</u>
4.	<u>Paspalum dilatatum</u>	<u>10</u>	<input type="checkbox"/> <u>8.7%</u>	<u>FAC</u>
5.	<u>Euphorbia hyssopifolia</u>	<u>5</u>	<input type="checkbox"/> <u>4.3%</u>	<u>FAC</u>
6.	<u>Setaria viridis</u>	<u>5</u>	<input type="checkbox"/> <u>4.3%</u>	<u>UPL</u>
7.	_____	<u>0</u>	<input type="checkbox"/> <u>0.0%</u>	_____
8.	_____	<u>0</u>	<input type="checkbox"/> <u>0.0%</u>	_____
9.	_____	<u>0</u>	<input type="checkbox"/> <u>0.0%</u>	_____
10.	_____	<u>0</u>	<input type="checkbox"/> <u>0.0%</u>	_____
11.	_____	<u>0</u>	<input type="checkbox"/> <u>0.0%</u>	_____
12.	_____	<u>0</u>	<input type="checkbox"/> <u>0.0%</u>	_____
50% of Total Cover: <u>57.5</u> 20% of Total Cover: <u>23</u>		<u>115</u>	= Total Cover	
Woody Vine Stratum (Plot size: _____)		Absolute % Cover	Dominant Species? Rel.Strat. Cover	Indicator Status
1.	_____	0	<input type="checkbox"/> 0.0%	_____
2.	_____	0	<input type="checkbox"/> 0.0%	_____
3.	_____	0	<input type="checkbox"/> 0.0%	_____
4.	_____	0	<input type="checkbox"/> 0.0%	_____
5.	_____	0	<input type="checkbox"/> 0.0%	_____
50% of Total Cover: <u>0</u> 20% of Total Cover: <u>0</u>		<u>0</u>	= Total Cover	

Dominance Test worksheet:

Number of Dominant Species That are OBL, FACW, or FAC: 0 (A)

Total Number of Dominant Species Across All Strata: 1 (B)

Percent of dominant Species That Are OBL, FACW, or FAC: 0.0% (A/B)

Prevalence Index worksheet:

Total % Cover of: _____ Multiply by: _____

OBL species 0 x 1 = 0

FACW species 0 x 2 = 0

FAC species 15 x 3 = 45

FACU species 95 x 4 = 380

UPL species 5 x 5 = 25

Column Totals: 115 (A) 450 (B)

Prevalence Index = B/A = 3.913

- Hydrophytic Vegetation Indicators:**
- 1 - Rapid Test for Hydrophytic Vegetation
 - 2 - Dominance Test is > 50%
 - 3 - Prevalence Index is ≤ 3.0¹
 - Problematic Hydrophytic Vegetation¹ (Explain)
- ¹ Indicators of hydric soil and wetland hydrology must be present, unless disturbed or problematic.

Definition of Vegetation Strata:

Tree - Woody plants, excluding woody vines, approximately 20 ft (6 m) or more in height and 3 in. (7.6 cm) or larger in diameter at breast height (DBH).

Sapling - Woody plants, excluding woody vines, approximately 20 ft (6 m) or more in height and less than 3 in. (7.6 cm) DBH.

Sapling/Shrub - Woody plants, excluding vines, less than 3 in. DBH and greater than 3.28 ft (1m) tall.

Shrub - Woody plants, excluding woody vines, approximately 3 to 20 ft (1 to 6 m) in height.

Herb - All herbaceous (non-woody) plants, including herbaceous vines, regardless of size, and woody plants, except woody vines, less than approximately 3 ft (1 m) in height.

Woody vine - All woody vines, regardless of height.

Hydrophytic Vegetation Present? Yes No

Remarks: (If observed, list morphological adaptations below).

*Indicator suffix = National status or professional decision assigned because Regional status not defined by FWS.

SOIL

Sampling Point: 4

Profile Description: (Describe to the depth needed to document the indicator or confirm the absence of indicators.)

Depth (inches)	Matrix			Redox Features					Texture	Remarks
	Color (moist)		%	Color (moist)	%	Tvpe ¹	Loc ²			
0-3	10YR	3/1	95	5YR	4/6	5	C	M	Silty Clay Loam	
3-16	10YR	2/1	80	10YR	3/6	10	C	M	Silty Clay Loam	
				10YR	6/1	5	C	M		
				5YR	4/6	5	C	M		

¹ Type: C=Concentration. D=Depletion. RM=Reduced Matrix, CS=Covered or Coated Sand Grains ²Location: PL=Pore Lining. M=Matrix

<p>Hydric Soil Indicators:</p> <input type="checkbox"/> Histosol (A1) <input type="checkbox"/> Histic Epipedon (A2) <input type="checkbox"/> Black Histic (A3) <input type="checkbox"/> Hydrogen Sulfide (A4) <input type="checkbox"/> Stratified Layers (A5) <input type="checkbox"/> Organic Bodies (A6) (LRR P, T, U) <input type="checkbox"/> 5 cm Mucky Mineral (A7) (LRR P, T, U) <input type="checkbox"/> Muck Presence (A8) (LRR U) <input type="checkbox"/> 1 cm Muck (A9) (LRR P, T) <input type="checkbox"/> Depleted Below Dark Surface (A11) <input type="checkbox"/> Thick Dark Surface (A12) <input type="checkbox"/> Coast Prairie Redox (A16) (MLRA 150A) <input type="checkbox"/> Sandy Muck Mineral (S1) (LRR O, S) <input type="checkbox"/> Sandy Gleyed Matrix (S4) <input type="checkbox"/> Sandy Redox (S5) <input type="checkbox"/> Stripped Matrix (S6) <input type="checkbox"/> Dark Surface (S7) (LRR P, S, T, U)	<input type="checkbox"/> Polyvalue Below Surface (S8) (LRR S, T, U) <input type="checkbox"/> Thin Dark Surface (S9) (LRR S, T, U) <input type="checkbox"/> Loamy Mucky Mineral (F1) (LRR O) <input type="checkbox"/> Loamy Gleyed Matrix (F2) <input checked="" type="checkbox"/> Depleted Matrix (F3) <input type="checkbox"/> Redox Dark Surface (F6) <input type="checkbox"/> Depleted Dark Surface (F7) <input type="checkbox"/> Redox Depressions (F8) <input type="checkbox"/> Marl (F10) (LRR U) <input type="checkbox"/> Depleted Ochric (F11) (MLRA 151) <input type="checkbox"/> Iron-Manganese Masses (F12) (LRR O, P, T) <input type="checkbox"/> Umbric Surface (F13) (LRR P, T, U) <input type="checkbox"/> Delta Ochric (F17) (MLRA 151) <input type="checkbox"/> Reduced Vertic (F18) (MLRA 150A, 150B) <input type="checkbox"/> Piedmont Floodplain Soils (F19) (MLRA 149A) <input type="checkbox"/> Anomalous Bright Loamy Soils (F20) (MLRA 149A, 153C, 153D)	<p>Indicators for Problematic Hydric Soils³:</p> <input type="checkbox"/> 1 cm Muck (A9) (LRR O) <input type="checkbox"/> 2 cm Muck (A10) (LRR S) <input type="checkbox"/> Reduced Vertic (F18) (outside MLRA 150A,B) <input type="checkbox"/> Piedmont Floodplain Soils (F19) (LRR P, S, T) <input type="checkbox"/> Anomalous Bright Loamy Soils (F20) (MLRA 153B) <input type="checkbox"/> Red Parent Material (TF2) <input type="checkbox"/> Very Shallow Dark Surface (TF12) <input type="checkbox"/> Other (Explain in Remarks)
---	---	--

³Indicators of hydrophytic vegetation and wetland hydrology must be present, unless disturbed or problematic.

Restrictive Layer (if observed):

Type: _____
 Depth (inches): _____

Hydric Soil Present? Yes No

Remarks:

WETLAND DETERMINATION DATA FORM - Atlantic and Gulf Coastal Plain Region

Project/Site: Acadiana Regional Airport P5 Site **City/County:** Iberia **Sampling Date:** 26-Jun-25
Applicant/Owner: CSRS - One Acadiana **State:** LA **Sampling Point:** 5
Investigator(s): Ryne Menard **Section, Township, Range:** S 8 T 6E R 12S
Landform (hillslope, terrace, etc.): Flat **Local relief (concave, convex, none):** concave **Slope:** 1.0 % / 0.6 °
Subregion (LRR or MLRA): LRR T **Lat.:** 30°00'40.827" N **Long.:** 91°53'01.854" W **Datum:** UTM15S
Soil Map Unit Name: Ja: Jeanerette silt loam, 0 to 1 percent slopes **NWI classification:** NA

Are climatic/hydrologic conditions on the site typical for this time of year? Yes No (If no, explain in Remarks.)
Are Vegetation , **Soil** , **or Hydrology** **significantly disturbed?** **Are "Normal Circumstances" present?** Yes No
Are Vegetation , **Soil** , **or Hydrology** **naturally problematic?** (If needed, explain any answers in Remarks.)

SUMMARY OF FINDINGS - Attach site map showing sampling point locations, transects, important features, etc.

Hydrophytic Vegetation Present? Yes <input type="radio"/> No <input checked="" type="radio"/> Hydric Soil Present? Yes <input type="radio"/> No <input checked="" type="radio"/> Wetland Hydrology Present? Yes <input type="radio"/> No <input checked="" type="radio"/>	Is the Sampled Area within a Wetland? Yes <input type="radio"/> No <input checked="" type="radio"/>
Remarks: soil pit not excavated , utility ROW	

HYDROLOGY

Wetland Hydrology Indicators: Primary Indicators (minimum of one required; check all that apply)		Secondary Indicators (minimum of 2 required)
<input type="checkbox"/> Surface Water (A1) <input type="checkbox"/> High Water Table (A2) <input type="checkbox"/> Saturation (A3) <input type="checkbox"/> Water Marks (B1) <input type="checkbox"/> Sediment Deposits (B2) <input type="checkbox"/> Drift Deposits (B3) <input type="checkbox"/> Algal Mat or Crust (B4) <input type="checkbox"/> Iron Deposits (B5) <input type="checkbox"/> Inundation Visible on Aerial Imagery (B7) <input type="checkbox"/> Water-Stained Leaves (B9)	<input type="checkbox"/> Aquatic Fauna (B13) <input type="checkbox"/> Marl Deposits (B15) (LRR U) <input type="checkbox"/> Hydrogen Sulfide Odor (C1) <input type="checkbox"/> Oxidized Rhizospheres along Living Roots (C3) <input type="checkbox"/> Presence of Reduced Iron (C4) <input type="checkbox"/> Recent Iron Reduction in Tilled Soils (C6) <input type="checkbox"/> Thin Muck Surface (C7) <input type="checkbox"/> Other (Explain in Remarks)	<input type="checkbox"/> Surface Soil Cracks (B6) <input type="checkbox"/> Sparsely Vegetated Concave Surface (B8) <input type="checkbox"/> Drainage Patterns (B10) <input type="checkbox"/> Moss Trim Lines (B16) <input type="checkbox"/> Dry Season Water Table (C2) <input type="checkbox"/> Crayfish Burrows (C8) <input type="checkbox"/> Saturation Visible on Aerial Imagery (C9) <input type="checkbox"/> Geomorphic Position (D2) <input type="checkbox"/> Shallow Aquitard (D3) <input type="checkbox"/> FAC-Neutral Test (D5) <input type="checkbox"/> Sphagnum moss (D8) (LRR T, U)
Field Observations: Surface Water Present? Yes <input type="radio"/> No <input checked="" type="radio"/> Depth (inches): _____ Water Table Present? Yes <input type="radio"/> No <input checked="" type="radio"/> Depth (inches): _____ Saturation Present? (includes capillary fringe) Yes <input type="radio"/> No <input checked="" type="radio"/> Depth (inches): _____		Wetland Hydrology Present? Yes <input type="radio"/> No <input checked="" type="radio"/>
Describe Recorded Data (stream gauge, monitoring well, aerial photos, previous inspections), if available:		
Remarks:		

VEGETATION (Five/Four Strata) - Use scientific names of plants.

Sampling Point: 5

Tree Stratum (Plot size: _____)		Absolute % Cover	Dominant Species? Rel.Strat. Cover	Indicator Status
1.	_____	0	<input type="checkbox"/> 0.0%	_____
2.	_____	0	<input type="checkbox"/> 0.0%	_____
3.	_____	0	<input type="checkbox"/> 0.0%	_____
4.	_____	0	<input type="checkbox"/> 0.0%	_____
5.	_____	0	<input type="checkbox"/> 0.0%	_____
6.	_____	0	<input type="checkbox"/> 0.0%	_____
7.	_____	0	<input type="checkbox"/> 0.0%	_____
8.	_____	0	<input type="checkbox"/> 0.0%	_____
50% of Total Cover: <u>0</u> 20% of Total Cover: <u>0</u>		0	= Total Cover	
Sapling or Sapling/Shrub Stratum (Plot size: _____)		Absolute % Cover	Dominant Species? Rel.Strat. Cover	Indicator Status
1.	_____	0	<input type="checkbox"/> 0.0%	_____
2.	_____	0	<input type="checkbox"/> 0.0%	_____
3.	_____	0	<input type="checkbox"/> 0.0%	_____
4.	_____	0	<input type="checkbox"/> 0.0%	_____
5.	_____	0	<input type="checkbox"/> 0.0%	_____
6.	_____	0	<input type="checkbox"/> 0.0%	_____
7.	_____	0	<input type="checkbox"/> 0.0%	_____
8.	_____	0	<input type="checkbox"/> 0.0%	_____
50% of Total Cover: <u>0</u> 20% of Total Cover: <u>0</u>		0	= Total Cover	
Shrub Stratum (Plot size: _____)		Absolute % Cover	Dominant Species? Rel.Strat. Cover	Indicator Status
1.	_____	0	<input type="checkbox"/> 0.0%	_____
2.	_____	0	<input type="checkbox"/> 0.0%	_____
3.	_____	0	<input type="checkbox"/> 0.0%	_____
4.	_____	0	<input type="checkbox"/> 0.0%	_____
5.	_____	0	<input type="checkbox"/> 0.0%	_____
6.	_____	0	<input type="checkbox"/> 0.0%	_____
50% of Total Cover: <u>0</u> 20% of Total Cover: <u>0</u>		0	= Total Cover	
Herb Stratum (Plot size: <u>30'</u>)		Absolute % Cover	Dominant Species? Rel.Strat. Cover	Indicator Status
1.	<u>Paspalum notatum</u>	85	<input checked="" type="checkbox"/> 77.3%	FACU
2.	<u>Dichondra carolinensis</u>	15	<input type="checkbox"/> 13.6%	FAC
3.	<u>Mimosa pudica</u>	5	<input type="checkbox"/> 4.5%	FACU
4.	<u>Rottboellia cochinchinensis</u>	5	<input type="checkbox"/> 4.5%	FACU
5.	_____	0	<input type="checkbox"/> 0.0%	_____
6.	_____	0	<input type="checkbox"/> 0.0%	_____
7.	_____	0	<input type="checkbox"/> 0.0%	_____
8.	_____	0	<input type="checkbox"/> 0.0%	_____
9.	_____	0	<input type="checkbox"/> 0.0%	_____
10.	_____	0	<input type="checkbox"/> 0.0%	_____
11.	_____	0	<input type="checkbox"/> 0.0%	_____
12.	_____	0	<input type="checkbox"/> 0.0%	_____
50% of Total Cover: <u>55</u> 20% of Total Cover: <u>22</u>		110	= Total Cover	
Woody Vine Stratum (Plot size: _____)		Absolute % Cover	Dominant Species? Rel.Strat. Cover	Indicator Status
1.	_____	0	<input type="checkbox"/> 0.0%	_____
2.	_____	0	<input type="checkbox"/> 0.0%	_____
3.	_____	0	<input type="checkbox"/> 0.0%	_____
4.	_____	0	<input type="checkbox"/> 0.0%	_____
5.	_____	0	<input type="checkbox"/> 0.0%	_____
50% of Total Cover: <u>0</u> 20% of Total Cover: <u>0</u>		0	= Total Cover	

Dominance Test worksheet:

Number of Dominant Species That are OBL, FACW, or FAC: 0 (A)

Total Number of Dominant Species Across All Strata: 1 (B)

Percent of dominant Species That Are OBL, FACW, or FAC: 0.0% (A/B)

Prevalence Index worksheet:

Total % Cover of: _____ Multiply by: _____

OBL species 0 x 1 = 0

FACW species 0 x 2 = 0

FAC species 15 x 3 = 45

FACU species 95 x 4 = 380

UPL species 0 x 5 = 0

Column Totals: 110 (A) 425 (B)

Prevalence Index = B/A = 3.864

- Hydrophytic Vegetation Indicators:**
- 1 - Rapid Test for Hydrophytic Vegetation
 - 2 - Dominance Test is > 50%
 - 3 - Prevalence Index is ≤3.0¹
 - Problematic Hydrophytic Vegetation¹ (Explain)
- ¹ Indicators of hydric soil and wetland hydrology must be present, unless disturbed or problematic.

Definition of Vegetation Strata:

Tree - Woody plants, excluding woody vines, approximately 20 ft (6 m) or more in height and 3 in. (7.6 cm) or larger in diameter at breast height (DBH).

Sapling - Woody plants, excluding woody vines, approximately 20 ft (6 m) or more in height and less than 3 in. (7.6 cm) DBH.

Sapling/Shrub - Woody plants, excluding vines, less than 3 in. DBH and greater than 3.28 ft (1m) tall.

Shrub - Woody plants, excluding woody vines, approximately 3 to 20 ft (1 to 6 m) in height.

Herb - All herbaceous (non-woody) plants, including herbaceous vines, regardless of size, and woody plants, except woody vines, less than approximately 3 ft (1 m) in height.

Woody vine - All woody vines, regardless of height.

Hydrophytic Vegetation Present? Yes No

Remarks: (If observed, list morphological adaptations below).

APPENDIX B – PHOTOGRAPHS



Photo 1 – Plot 1, soils



Photo 3 – Plot 1, vegetation facing easterly



Photo 2 – Plot 1, vegetation facing northerly



Photo 4 – Plot 1, vegetation facing southerly



Photo 5 – Plot 1, vegetation facing westerly



Photo 6 – Plot 2, soils



Photo 8 – Plot 2, vegetation facing easterly



Photo 7 – Plot 2, vegetation facing northerly



Photo 9 – Plot 2, vegetation facing southerly



Photo 10 – Plot 2, vegetation facing westerly



Photo 11 – Plot 3, soils



Photo 13 – Plot 3, vegetation facing easterly



Photo 12 – Plot 3, vegetation facing northerly



Photo 14 – Plot 3, vegetation facing southerly



Photo 15 – Plot 3, vegetation facing westerly



Photo 16 – Plot 4, soils

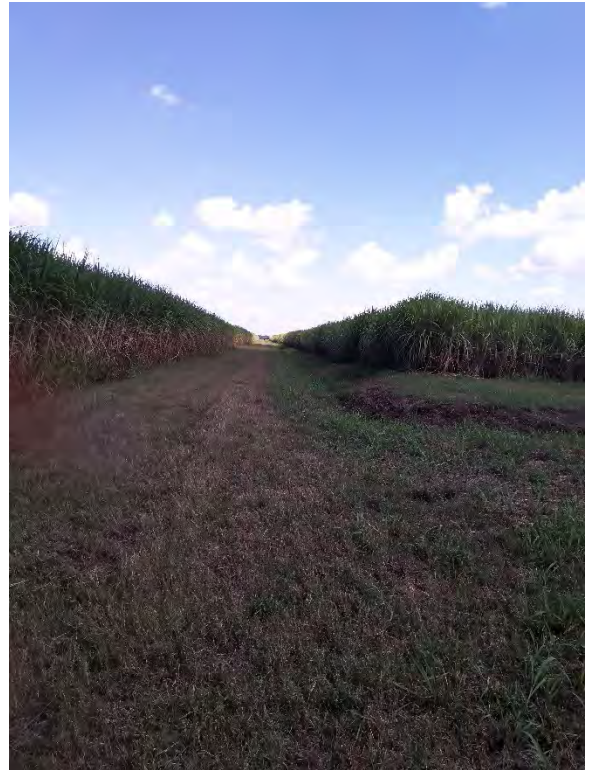


Photo 18 - Plot 4, vegetation facing easterly



Photo 17– Plot 4, vegetation facing northerly



Photo 19– Plot 4, vegetation facing southerly



Photo 20 - Plot 4, vegetation facing westerly



Photo 21 - Plot 5, soils



Photo 23 - Plot 5, vegetation facing easterly



Photo 22 - Plot 5, vegetation facing northerly



Photo 24 - Plot 5, vegetation facing southerly



Photo 25 - Plot 5, vegetation facing westerly



Photo 26 – Non-Wetland Water 1



Photo 28 – Non-Wetland Water 1



Photo 27 – Non-Wetland Water 1



Photo 29 – Non-Wetland Water 1



Photo 30 – Non-Wetland Water 2



Photo 32 – Non-Wetland Water 2



Photo 31 – Non-Wetland Water 2



Photo 33 – Non-Wetland Water 2



Photo 34 – Non – Jurisdictional Water (Field Ditch)



Photo 36 - Non – Jurisdictional Water (Field Ditch)



Photo 35 - Non – Jurisdictional Water (Field Ditch)



Photo 37 - Non – Jurisdictional Water (Field Ditch)

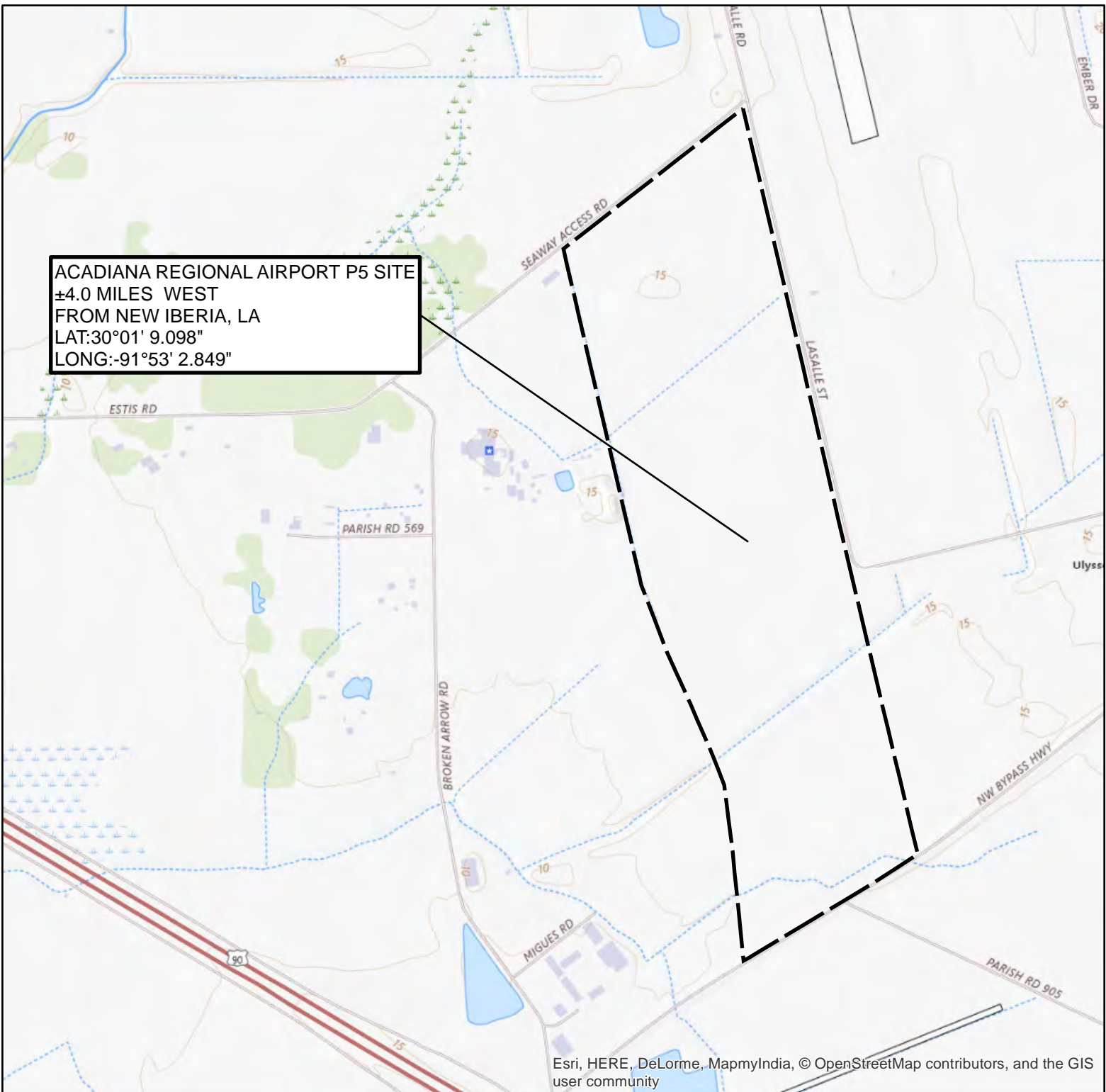


Photo 38 - Non – Jurisdictional Water (Roadside Ditch)



Photo 39 - Non – Jurisdictional Water (Roadside Ditch)

APPENDIX C – MAPS



ACADIANA REGIONAL AIRPORT P5 SITE
 ±4.0 MILES WEST
 FROM NEW IBERIA, LA
 LAT:30°01' 9.098"
 LONG:-91°53' 2.849"

Esri, HERE, DeLorme, MapmyIndia, © OpenStreetMap contributors, and the GIS user community



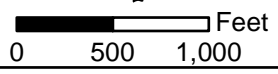
VICINITY MAP

**ACADIANA REGIONAL AIRPORT
 P5 SITE**
 One Acadiana
 Iberia Parish, LA

FOR PERMITTING ONLY-
 This document is not to be used
 for construction, bidding, recordation,
 conveyance or sales.

Rev: (date:initial)	Created by:	BPM
	Date:	10/8/2025
	NA	

Legend
 Project_Boundary



Project Location

Sources: Esri, HERE, Garmin,
 Intermap, increment P Corp.,
 DeLorme, GeoEye, (Geo), CNES,
 AN, GeoBase, IGN, Kadaster



Source: Esri, DigitalGlobe, GeoEye, Earthstar Geographics, CNES/Airbus DS, USDA, USGS, AEX, Getmapping, Aerogrid, IGN, IGP, swisstopo, and the GIS User Community

WETLAND DELINEATION MAP

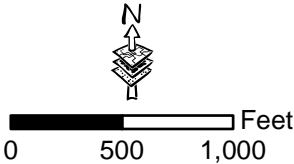
**ACADIANA REGIONAL AIRPORT
P5 SITE**
One Acadiana
Iberia Parish, LA

FOR PERMITTING ONLY-
This document is not to be used
for construction, bidding, recordation,
conveyance or sales.

Plot_ID	Latitude (DMS)	Longitude (DMS)
1	30°01'29.539" N	91°53'17.151" W
2	30°01'18.737" N	91°53'09.608" W
3	30°00'59.828" N	91°52'54.702" W
4	30°00'44.012" N	91°53'01.341" W
5	30°00'40.827" N	91°53'01.854" W

- Legend**
- Delineation_Plot
 - Non-Wetland Waters
 - Project_Boundary
 - Non-Wetlands
 - █ Non-Wetland Waters

Rev: (date:initial)	Created by:	BPM
	Date:	10/8/2025
		NA





Source: Esri, DigitalGlobe, GeoEye, Earthstar Geographics, CNES/Airbus DS, USDA, USGS, AEX, Getmapping, Aerogrid, IGN, IGP, swisstopo, and the GIS User Community





WETLAND DELINEATION MAP

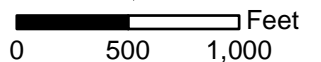
ACADIANA REGIONAL AIRPORT
P5 SITE
 One Acadiana
 Iberia Parish, LA

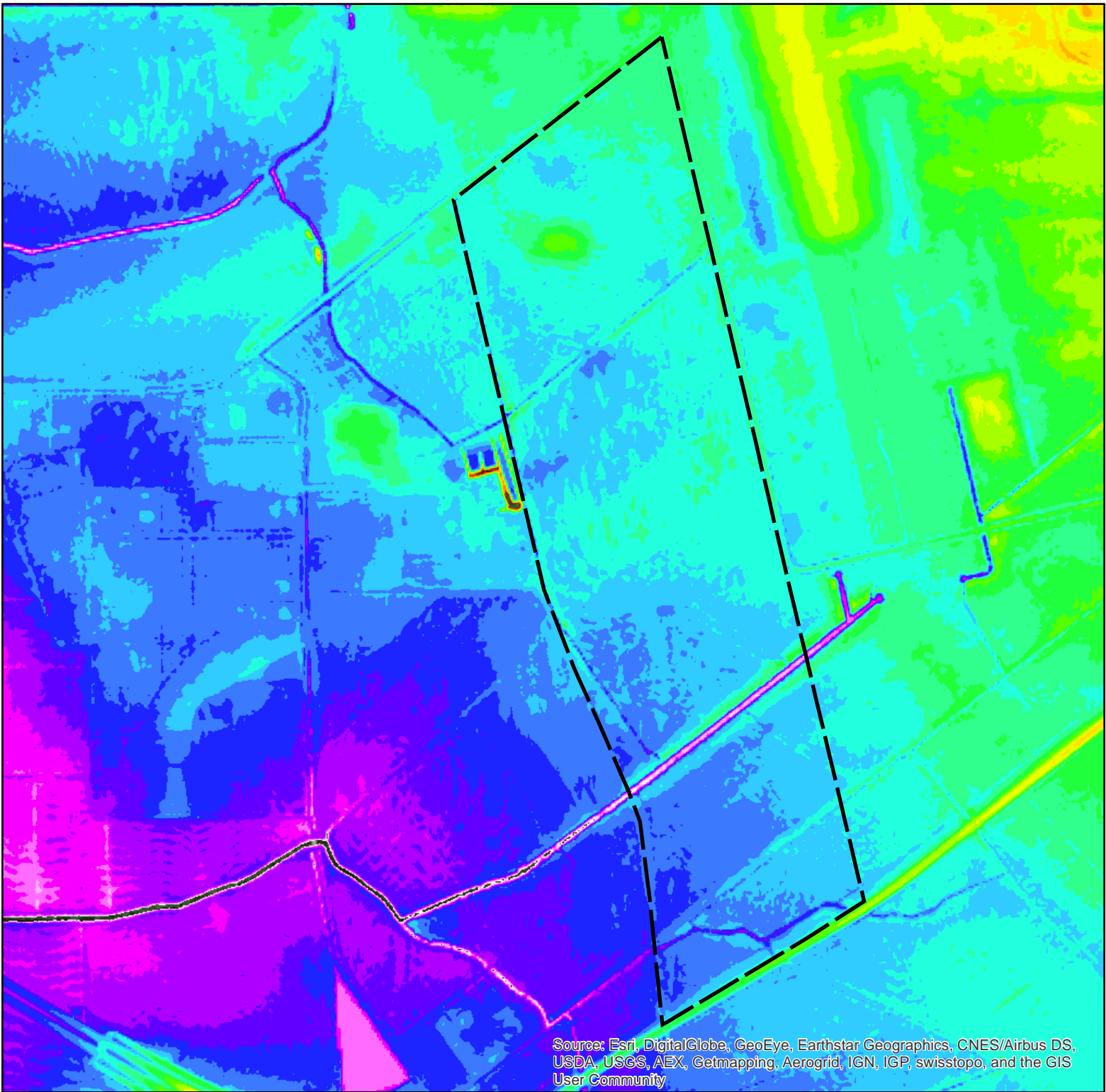
FOR PERMITTING ONLY-
 This document is not to be used
 for construction, bidding, recordation,
 conveyance or sales.

Rev: (date:initial)	Created by:	BPM
	Date:	10/8/2025
		NA

Legend

-  MAPPED SOIL UNIT
-  Ja: Jeanerette silt loam, 0 to 1 percent slopes
-  Pa: Patoutville silt loam, 0 to 1 percent slopes
-  Project_Boundary





Source: Esri, DigitalGlobe, GeoEye, Earthstar Geographics, CNES/Airbus DS, USDA, USGS, AEX, Getmapping, Aerogrid, IGN, IGP, swisstopo, and the GIS User Community

Legend

4.004270554 - 5	15.000000001 - 16
5.000000001 - 6	16.000000001 - 17
6.000000001 - 7	17.000000001 - 18
7.000000001 - 8	18.000000001 - 19
8.000000001 - 9	19.000000001 - 20
9.000000001 - 10	20.000000001 - 21
10.000000001 - 11	21.000000001 - 22
11.000000001 - 12	22.000000001 - 23
12.000000001 - 13	23.000000001 - 24
13.000000001 - 14	24.000000001 - 25
14.000000001 - 15	

LIDAR MAP		
ACADIANA REGIONAL AIRPORT		
P5 SITE		
One Acadiana Iberia Parish, LA		
FOR PERMITTING ONLY- This document is not to be used for construction, bidding, recordation, conveyance or sales.		
Rev: (date:initial)	Created by:	BPM
	Date:	10/8/2025
	NA	
