

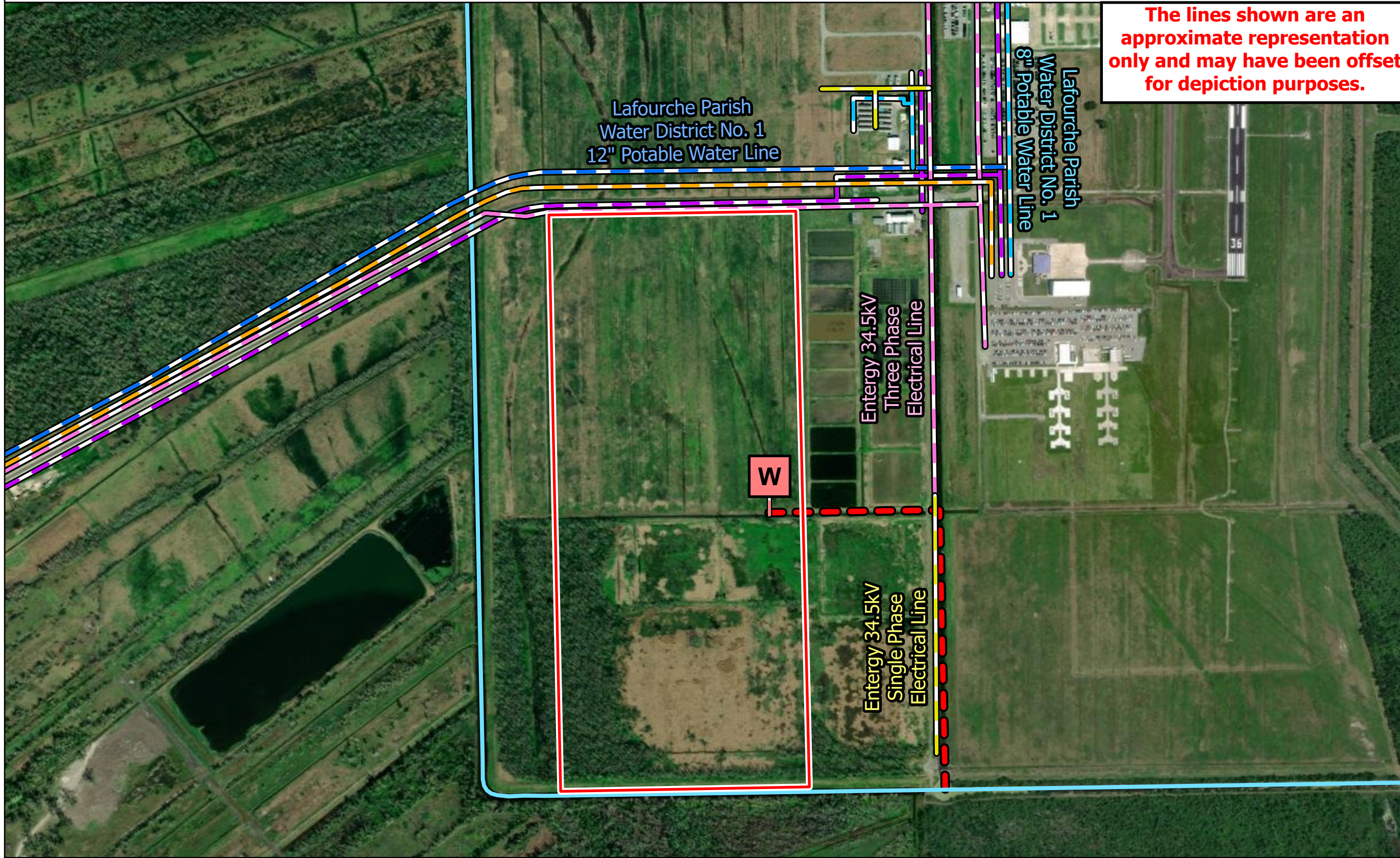
Exhibit BB.

South Lafourche Airport South Site All Utilities Infrastructure Map



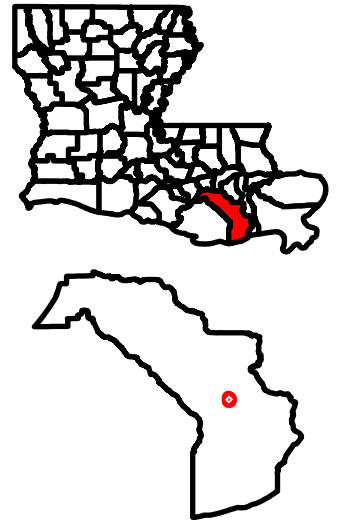
South Lafourche Airport South Site All Utilities Infrastructure Map

Site Exhibit for
South Lafourche
Airport South Site
Lafourche Parish, LA



The lines shown are an approximate representation only and may have been offset for depiction purposes.

SLEC



Legend

- Site Boundary (±131.54 ac.)
- Utility Infrastructure**
- Energy 34.5kV Three Phase Electrical Line
- Energy 34.5kV Single Phase Electrical Line
- Lafourche Parish Water District No. 1 12" Potable Water Line
- Lafourche Parish Water District No. 1 8" Potable Water Line
- South Coast Gas Company 3" Natural Gas Distribution Line
- REV Telecommunication Line
- W Proposed 50,000 GPD Wastewater Treatment Plant
- Proposed 100-foot Wastewater Discharge Line
- Proposed Discharge Stream
- Barrow Canal

General Notes:
 1. The information presented herein is for planning purposes only. Further detailed due diligence MUST be completed prior to making decisions regarding the site.
 2. No attempt has been made by CSRS, Inc. to verify site boundary, title, actual legal ownership, deed restrictions, servitudes, easements, or other burdens on the property, other than that furnished by the client or his representative.
 3. Transportation data from 2023 TIGER datasets via U.S. Census Bureau at <https://www.census.gov/geographies/mapping-files/time-series/geo/tiger-line-file.html>.
 4. Aerial imagery is compiled from multiple different sources to create one cohesive image and may not reflect current ground condition.
 5. Utility information from visual inspection and/or the individual utility operators. Exact field location has not been determined by survey. The lines shown are an approximate representation only and may have been offset for depiction purposes.

Date: 10/14/2024
 Project Number: 216270
 Drawn By: BMS
 Checked By: EEB

P:\216270 South Lafourche Airport Certification_South\CADD\GIS_templates\GIS_South