

Exhibit L.

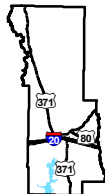
Kitchco Ryans Way Potable Water Infrastructure Map



Kitchco Ryans Way Potable Water Infrastructure Map

Kitchco Ryans Way
Webster Parish, LA

NLEP

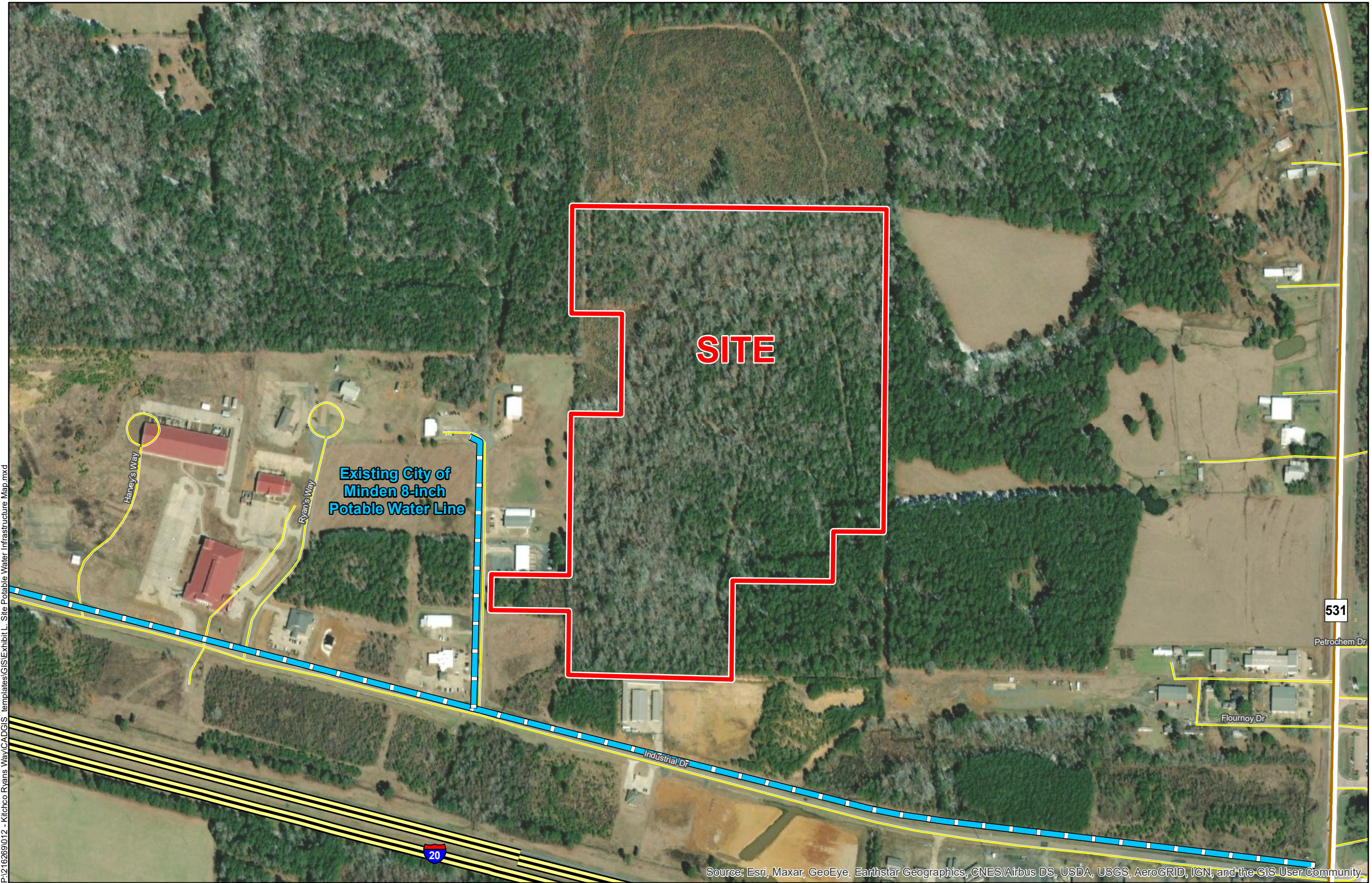


Webster Parish

LEGEND

- Site Boundary (51.46 Ac.±)
- Existing City of Minden 8-inch Potable Water Line
- Interstate
- Rural State Highway
- Local Roads

P:\216269\012 - Kitchco Ryans Way\CAD\GIS templates\GIS\Exhibit L - Site Potable Water Infrastructure Map.mxd



Source: Esri, Maxar, GeoEye, Earthstar Geographics, CNES/Airbus DS, USDA, USGS, AeroGRID, IGN, and the GIS User Community

- General Notes:
1. No attempt has been made by CSRS, Inc. to verify site boundary, title, actual legal ownership, deed restrictions, servitudes, easements, or other burdens on the property, other than that furnished by the client or his representative.
 2. Transportation data from 2013 TIGER datasets via U.S. Census Bureau at <ftp://ftp2.census.gov/geo/tiger/TIGER2013>.
 3. 2015 aerial imagery from ESRI Online Basemaps and may not reflect current ground conditions.
 4. Utility information from visual inspection and/or the individual utility operators. Exact field location has not been determined by survey. The lines shown are an approximate representation only and may have been offset for depiction purposes.



Scale 1:5,000
0 260 520 Feet



Date:	1/27/2022
Project Number:	216269
Drawn By:	SEW
Checked By:	EEB

CSRS