



## Riverbend 1

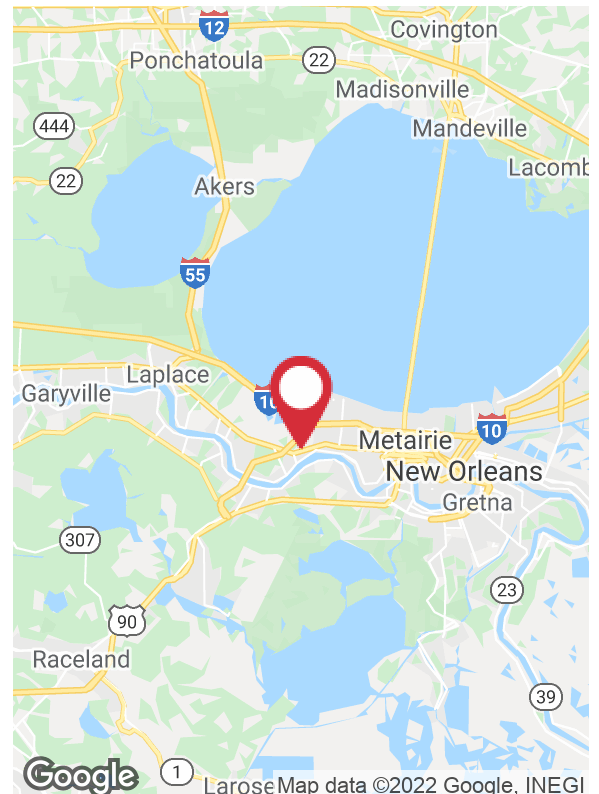
162 Riverbend Drive, Saint Rose, Louisiana 70087

### Property Features

- ±27,000 SF Class "A" Warehouse/Distribution Space
- ±600 SF of Office Space
- ±8 Parking Spaces
- 40' x 56' Typical Column Spacing
- Loading via six (6) dock high overhead doors
- Fully Insulated and Sprinklered
- 24' Eave Height

### Base Rate

\$14,063/mo | \$6.25 SF/yr



For more information

**Trimble Green, SIOR**

O: 504 569 9412 | C: 504 669 8722  
tgreen@latterblum.com

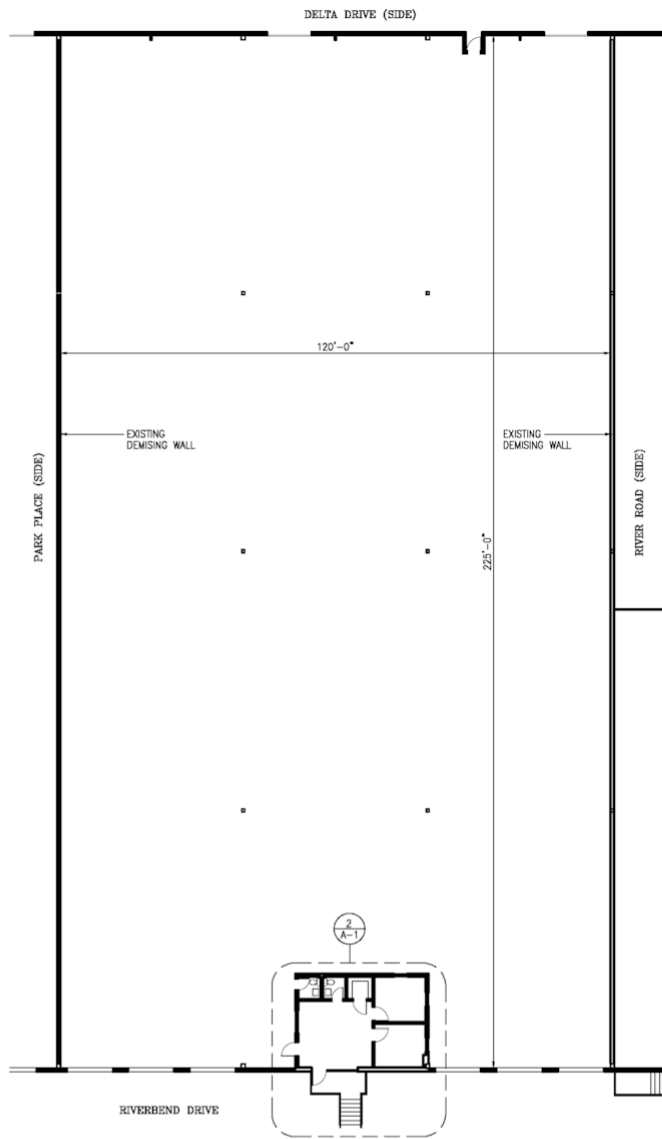
**CALL OR EMAIL FOR MORE INFORMATION**

NO WARRANTY OR REPRESENTATION, EXPRESS OR IMPLIED, IS MADE AS TO THE ACCURACY OF THE INFORMATION CONTAINED HEREIN, AND THE SAME IS SUBMITTED SUBJECT TO ERRORS, OMISSIONS, CHANGE OF PRICE, RENTAL OR OTHER CONDITIONS, PRIOR SALE, LEASE OR FINANCING, OR WITHDRAWAL WITHOUT NOTICE, AND OF ANY SPECIAL LISTING CONDITIONS IMPOSED BY OUR PRINCIPALS NO WARRANTIES OR REPRESENTATIONS ARE MADE AS TO THE CONDITION OF THE PROPERTY OR ANY HAZARDS CONTAINED THEREIN ARE ANY TO BE IMPLIED. LICENSED IN LOUISIANA.

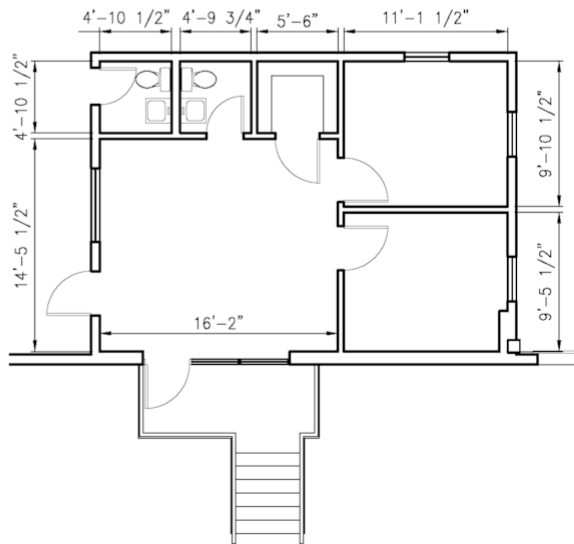
430 Notre Dame Street  
New Orleans, LA 70130  
504 525 1311 tel  
**latterblum.com**

February 14, 2022


# Floor Plan



**1 OVERALL FLOOR PLAN**  
SCALE: NOT TO SCALE



**2 ENLARGED OFFICE PLAN**  
SCALE: 1/8"=1'-0"

SCALE: AS SHOWN	FILE NAME: 17002\
DATE: 4 Jan. 2019	162Riverbend_1-4-19.C
 <b>STEVEN J. FINEGAN ARCHITECTS, LTD.</b> A PROFESSIONAL CORPORATION 123 S. Pierce St. - New Orleans, LA 70119 (504)488-5744 <a href="http://www.stevfineganarchitect.com">www.stevfineganarchitect.com</a> E-MAIL: <a href="mailto:stevfinegan@nocomail.com">stevfinegan@nocomail.com</a>	

162 Riverbend Drive  
St. Rose, LA

A-1

This drawing is the property of STEVEN J. FINEGAN ARCHITECTS, LTD. It is not to be reproduced, copied or altered in whole or in part. It is not to be used for any purpose without the approval of STEVEN J. FINEGAN ARCHITECTS, LTD. and is to be returned on request.



## Additional Photos

