

Exhibit Q.

Crosspoint South Site

Local Product Pipelines Map

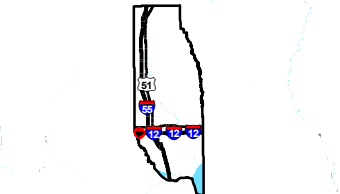
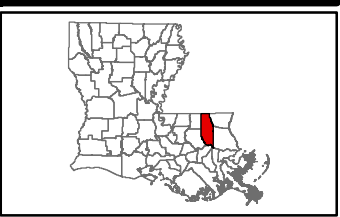


GREATER NEW ORLEANS
INC
REGIONAL ECONOMIC DEVELOPMENT

Crosspoint South Site Local Product Pipelines Map

Crosspoint South Site
Tangipahoa Parish, LA

GNO



Tangipahoa Parish

LEGEND

Site Boundary (19.94 Ac. ±)

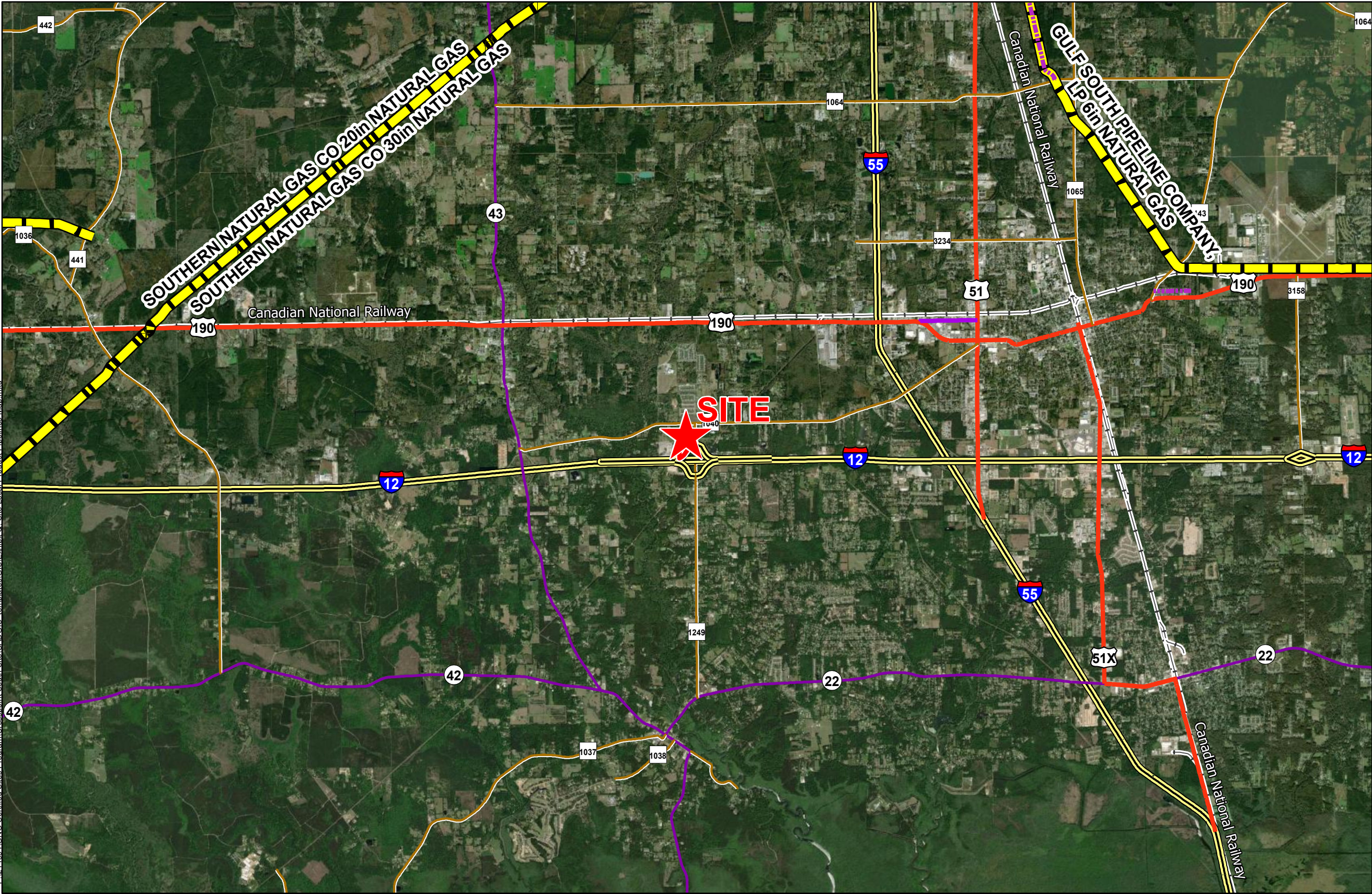
National Pipeline Mapping System

- Other
- NATURAL GAS
- Existing Roadway
 - Interstate
 - US Highway
 - 4-Lane State Highway
 - Urban State Highway
 - Rural State Highway
 - Railroad



Date:	1/15/2021
Project Number:	214094
Drawn By:	SEW
Checked By:	EEB

CSRS



- General Notes:
1. No attempt has been made by CSRS, Inc. to verify site boundary, title, actual legal ownership, deed restrictions, servitudes, easements, or other burdens on the property, other than that furnished by the client or his representative.
 2. Transportation data from 2013 TIGER datasets via U.S. Census Bureau at <ftp://ftp2.census.gov/geo/tiger/TIGER2013>.
 3. Utility information from visual inspection and/or the individual utility operators. Exact field location has not been determined by survey. The lines shown are an approximate representation only and may have been offset for depiction purposes.
 4. 2015 aerial imagery from USDA-APFO National Agricultural Inventory Project (NAIP) and may not reflect current ground conditions.

