

Exhibit K.

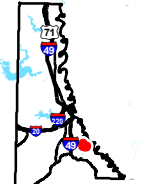
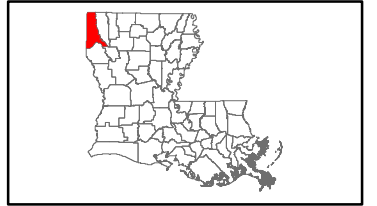
Highway 1 Leonard Road Site Potable Water Infrastructure Map



Highway 1 Leonard Road Site Potable Water Infrastructure Map

Highway 1 Leonard Road Site
Caddo Parish, LA

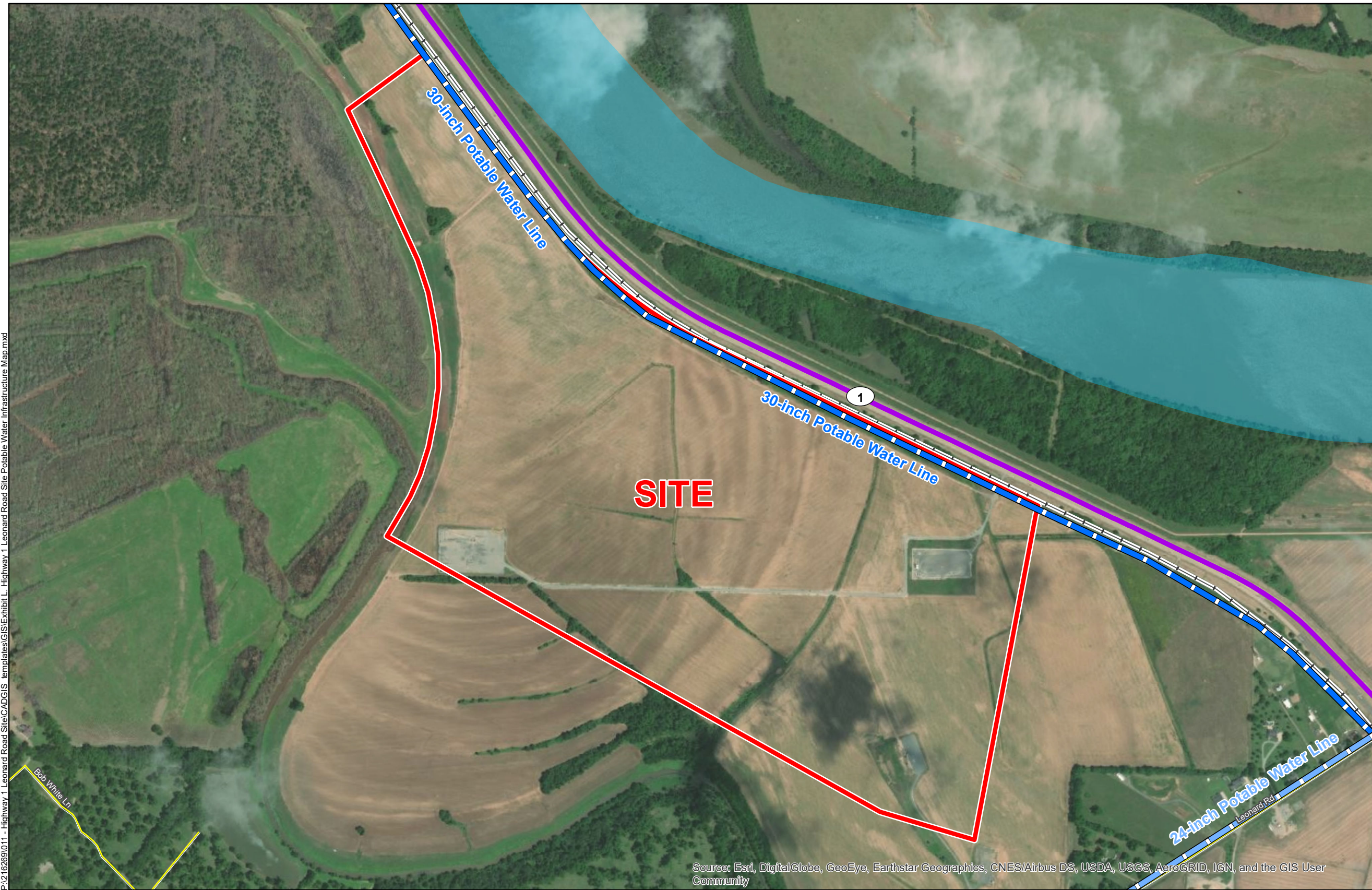
NLEP



Caddo Parish

LEGEND

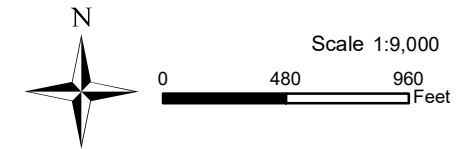
- Site Boundary
- City of Shreveport Potable Water Infrastructure**
- ▬ 24-inch Potable Water Line
- ▬ 30-inch Potable Water Line
- Existing Roadway**
- ▬ 4-Lane State Highway
- ▬ Local Roads
- Railroad
- ▭ Waterbody



Source: Esri, DigitalGlobe, GeoEye, Earthstar Geographics, CNES/Airbus DS, USDA, USGS, AeroGRID, IGN, and the GIS User Community

P:\216269\011 - Highway 1 Leonard Road Site\CAD\GIS templates\GIS\Exhibit L - Highway 1 Leonard Road Site Potable Water Infrastructure Map.mxd

- General Notes:
1. No attempt has been made by CSRS, Inc. to verify site boundary, title, actual legal ownership, deed restrictions, servitudes, easements, or other burdens on the property, other than that furnished by the client or his representative.
 2. Transportation data from 2013 TIGER datasets via U.S. Census Bureau at [ftp://ftp2.census.gov/geo/tiger/TIGER2013](http://ftp2.census.gov/geo/tiger/TIGER2013).
 3. 2015 aerial imagery from ESRI Online Basemaps and may not reflect current ground conditions.



Date:	7/21/2020
Project Number:	216269216269
Drawn By:	KPH
Checked By:	EEB

