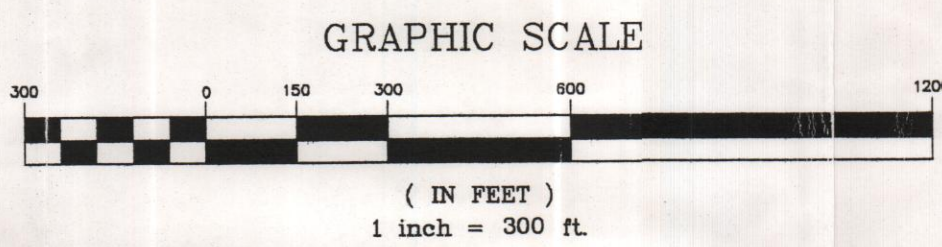


PLANT NORTH

ACTUAL NORTH



GENERAL NOTES:

1. THE GRID SYSTEM SHOWN ON THIS DRAWING IS THE PLANT COORDINATE SYSTEM AS ESTABLISHED BY FORMOSA PLASTICS CORPORATION FOR THIS SITE.
2. THIS SURVEY CONFORMS TO CURRENT STANDARDS OF PRACTICE AS DEFINED IN SUBPART #2505, TITLE 46, CHAPTER 25 OF PROFESSIONAL & OCCUPATIONAL STANDARDS FOR PROFESSIONAL ENGINEERS AND LAND SURVEYORS FOR A CLASS "C" SURVEY.
3. NO ATTEMPT HAS BEEN MADE BY PATIN ENGINEERS & SURVEYORS, INC. TO VERIFY TITLE, ACTUAL LEGAL OWNERSHIP, SERVITUDES, EASEMENTS, RIGHT-OF-WAYS OR OTHER BURDENS ON THE PROPERTY SHOWN, OTHER THAN THAT FURNISHED TO THIS OFFICE BY THE CLIENT OR HIS REPRESENTATIVE. NO REPRESENTATION IS MADE THAT ALL BURDENS ON THIS PROPERTY ARE SHOWN HEREON.
4. WETLANDS DETERMINATION IS NOT WITHIN THE SCOPE OF THIS SURVEY. THEREFORE NO WETLANDS DETERMINATION HAS BEEN MADE FOR THE PROPERTY SHOWN ON THIS PLAT.

ZONING:

POINTE COUPEE PARISH HAS NO PARISH WIDE ZONING.

FLOOD ZONE:

BY SCALE ONLY, THIS PROPERTY IS LOCATED IN FLOOD ZONES "A" & "C" AS SHOWN ON FEDERAL EMERGENCY MANAGEMENT AGENCY FLOOD INSURANCE RATE MAP (F.I.R.M.) COMMUNITY PANEL NO. 22014 0150 C FOR POINTE COUPEE PARISH, LA. HAVING AN EFFECTIVE DATE OF AUGUST 2, 1990. NO FIELD VERIFICATION HAS BEEN MADE OF THIS FLOOD ZONE DETERMINATION.

REFERENCE MAPS:

1. SURVEY OF TRACT 9 FOR FORMAT CORPORATION BY PATIN ENGINEERS & SURVEYORS, INC. (CLETUS LANGLOIS, R.L.S.) DATED FEBRUARY 29, 1996.
2. SURVEY OF TRACT 11-A, LAKESIDE PLANTATION FOR FORMAT CORPORATION TO BE DONATED TO POINTE COUPEE PARISH BY PATIN ENGINEERS & SURVEYORS, INC. (CLETUS LANGLOIS, R.L.S.) DATED JULY 17, 1998.
3. PROPOSED WELL SITE, WATERWORKS DISTRICT NO. 2 OF POINTE COUPEE PARISH, SECTION 66, T-3-S, R-8-E, POINTE COUPEE PARISH, LA BY PAN AMERICAN ENGINEERS, INC. (R.D. HODGES, R.L.S.) DATED JULY 17, 1989.
4. SURVEY OF TRACT 8-A FORMOSA PLASTICS CORPORATION, BACHELOR, LA BY DARYL B. PATIN, C.E. (DARYL B. PATIN, R.L.S.) DATED JULY 6, 1990, LAST REVISED JUNE 10, 1993. (PES JOB NO. 88-107).
5. SITE PLAN INFORMATION FOR FORMOSA PLASTICS CORPORATION, BACHELOR, LA BY DARYL B. PATIN, C.E. (DARYL B. PATIN, R.L.S.) DATED NOVEMBER 29, 1989, LAST REVISED MAY 24, 1990. (PES JOB NO. 89-106).

BASE BEARING:

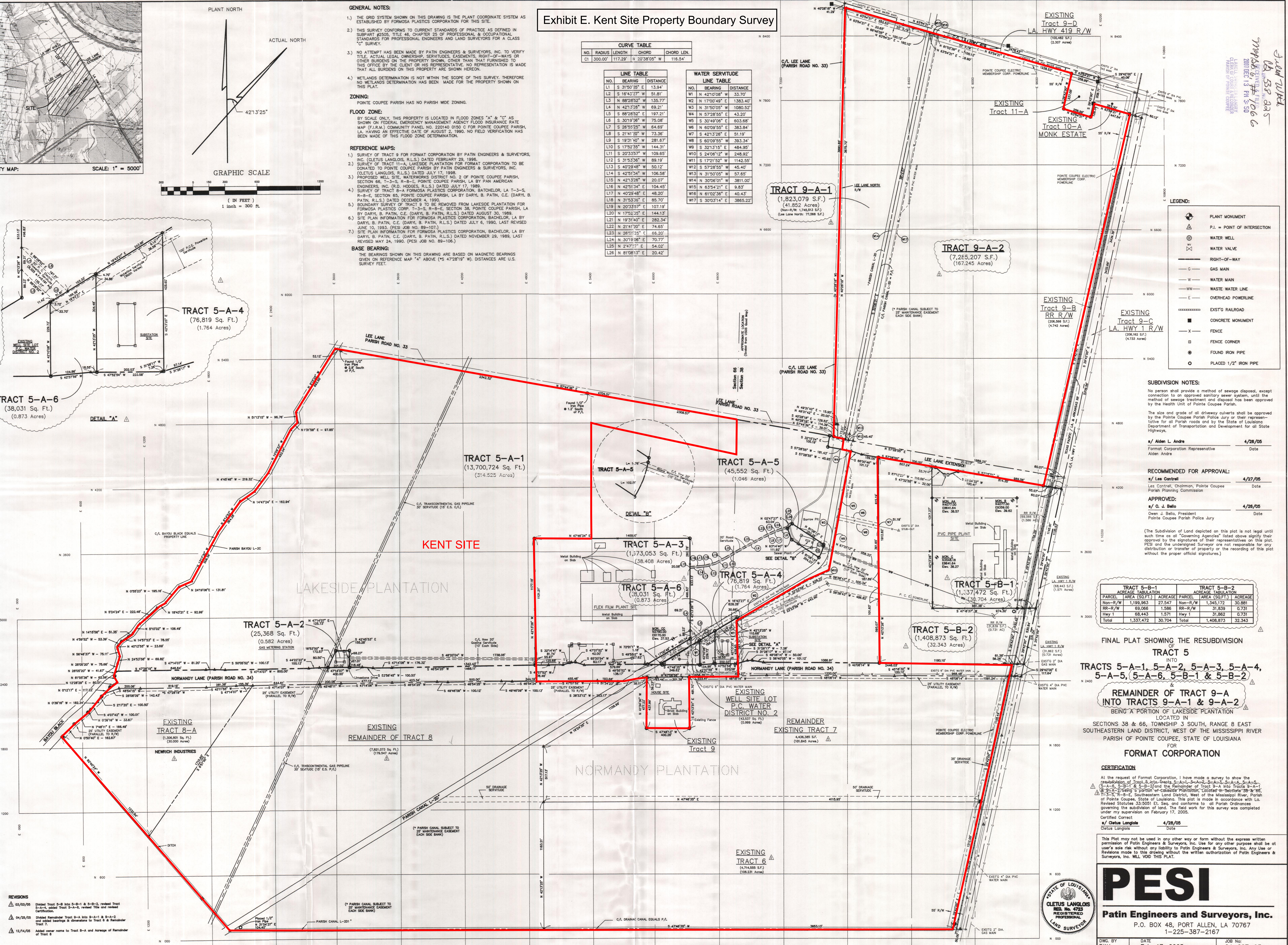
THE BEARINGS SHOWN ON THIS DRAWING ARE BASED ON MAGNETIC BEARINGS GIVEN ON REFERENCE MAP "A" ABOVE ("S 47°28'19" W). DISTANCES ARE U.S. SURVEY FEET.

Exhibit E. Kent Site Property Boundary Survey

CURVE TABLE			
NO.	RADIUS	LENGTH	CHORD
C1	300.00'	117.29'	N 20°38'05" W 116.54'

LINE TABLE		
NO.	BEARING	DISTANCE
L1	S 31°50'35" E	13.94'
L2	S 16°43'27" W	51.81'
L3	N 88°28'52" W	135.77'
L4	N 42°13'26" W	69.21'
L5	S 88°28'52" E	197.21'
L6	S 30°19'06" W	75.08'
L7	S 26°55'25" W	64.69'
L8	S 21°41'00" W	73.36'
L9	S 19°31'40" W	281.67'
L10	S 17°52'35" W	144.31'
L11	S 20°33'57" W	109.65'
L12	S 31°53'36" W	89.19'
L13	S 40°29'48" W	50.12'
L14	S 42°51'34" W	106.58'
L15	N 42°13'26" W	20.07'
L16	N 42°51'34" E	104.45'
L17	N 40°29'48" E	48.20'
L18	N 31°53'36" E	85.70'
L19	N 20°33'57" E	107.19'
L20	N 17°52'35" E	144.13'
L21	N 19°31'40" E	282.34'
L22	N 21°41'00" E	74.65'
L23	N 26°55'25" E	66.20'
L24	N 30°19'06" E	70.77'
L25	N 24°7'37" E	54.02'
L26	N 81°08'13" E	20.42'

WATER SERVITUDE LINE TABLE		
NO.	BEARING	DISTANCE
W1	N 42°10'08" W	33.70'
W2	N 17°00'49" E	138.34'
W3	N 31°50'05" W	1080.52'
W4	N 57°28'55" E	43.20'
W5	S 30°49'06" E	603.68'
W6	N 60°09'55" E	383.84'
W7	S 42°13'26" E	51.19'
W8	S 60°09'55" W	393.34'
W9	S 32°13'15" E	484.95'
W10	S 24°06'12" W	248.92'
W11	S 17°21'52" W	1142.55'
W12	S 57°28'55" W	45.40'
W13	N 31°50'05" W	57.65'
W14	N 30°06'01" W	57.65'
W15	N 63°54'21" E	9.83'
W16	N 61°02'36" E	40.43'
W17	S 30°03'14" E	3865.22'



SUBDIVISION NOTES:

No person shall provide a method of sewage disposal, except connection to an approved sanitary sewer system, until the method of sewage treatment and disposal has been approved by the Health Unit of Pointe Coupee Parish.

The size and grade of all driveway culverts shall be approved by the Pointe Coupee Parish Police Jury or their representative for all Parish roads and by the State of Louisiana Department of Transportation and Development for all State Highways.

s/ Aiden L. Andre 4/28/05
Format Corporation Representative
Aiden Andre Date

RECOMMENDED FOR APPROVAL:

s/ Les Contrell 4/27/05
Les Contrell, Chairman, Pointe Coupee Parish Planning Commission
Date

APPROVED: 4/28/05
s/ O. J. Bello
Owen J. Bello, President
Pointe Coupee Parish Police Jury Date

(The Subdivision of Land depicted on this plat is not legal until such time as all "Governing Agencies" listed above signify their approval by the signatures of their representatives on this plat. PESI and the undersigned Surveyor are responsible for any distribution or transfer of property or the recording of this plat without the proper official signatures.)

TRACT 5-B-1		TRACT 5-B-2	
TRACT	ACREAGE	TRACT	ACREAGE
TRACT 5-B-1	31.862	TRACT 5-B-2	32.343
Non-R/W	1,109.863	Non-R/W	1,343.172
RR-R/W	69.066	RR-R/W	31.839
Hwy 1	68.443	Hwy 1	31.862
Total	1,337,472	Total	1,408,873

FINAL PLAT SHOWING THE RESUBDIVISION

TRACT 5
INTO
TRACTS 5-A-1, 5-A-2, 5-A-3, 5-A-4,
5-A-5, 5-A-6, 5-B-1 & 5-B-2

REMAINDER OF TRACT 9-A
INTO TRACTS 9-A-1 & 9-A-2

BEING A PORTION OF LAKESIDE PLANTATION
LOCATED IN

SECTIONS 38 & 66, TOWNSHIP 3 SOUTH, RANGE 8 EAST
SOUTHEASTERN LAND DISTRICT, WEST OF THE MISSISSIPPI RIVER
PARISH OF POINTE COUPE, STATE OF LOUISIANA

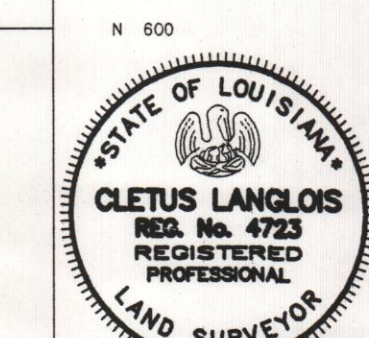
FOR
FORMAT CORPORATION

CERTIFICATION

At the request of Format Corporation, I have made a survey to show the resubdivision of Tract 5 into Tracts 5-A-1, 5-A-2, 5-A-3, 5-A-4, 5-A-5, 5-A-6, 5-B-1 & 5-B-2 and the remainder of Tract 9-A into Tracts 9-A-1 & 9-A-2 being a portion of Lakeside Plantation located in Sections 38 & 66, Township 3 South, Range 8 East, Southeastern Land District, West of the Mississippi River, Parish of Pointe Coupee, State of Louisiana. This plat is made in accordance with Louisiana Statutes 33:5051, Et. Sec. and conforms to all Parish Ordinances governing the subdivision of land. The field work for this survey was completed under my supervision on February 17, 2005.

Certified Correct 4/28/05
s/ Cletus Langlois
Cletus Langlois Date

This Plat may not be used in any other way or form without the express written permission of Patin Engineers & Surveyors, Inc. For any other purpose shall be at user's sole risk without any liability to Patin Engineers & Surveyors, Inc. Any Use or Revisions made to this drawing without the written authorization of Patin Engineers & Surveyors, Inc. WILL VOID THIS PLAT.



PESI

Patin Engineers and Surveyors, Inc.
P.O. BOX 48, PORT ALLEN, LA 70767
1-225-387-2167

DWG. BY DWA DATE Feb. 17, 2005 JOB NO. 04-207-03