

Exhibit B.

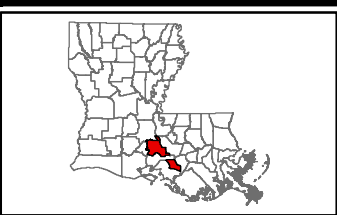
Breaux Bridge I-10 Site Oblique Aerial Photo Map



Breaux Bridge I-10 Site Oblique Aerial Photo Map

Breaux Bridge I-10 Site
St. Martin Parish, LA

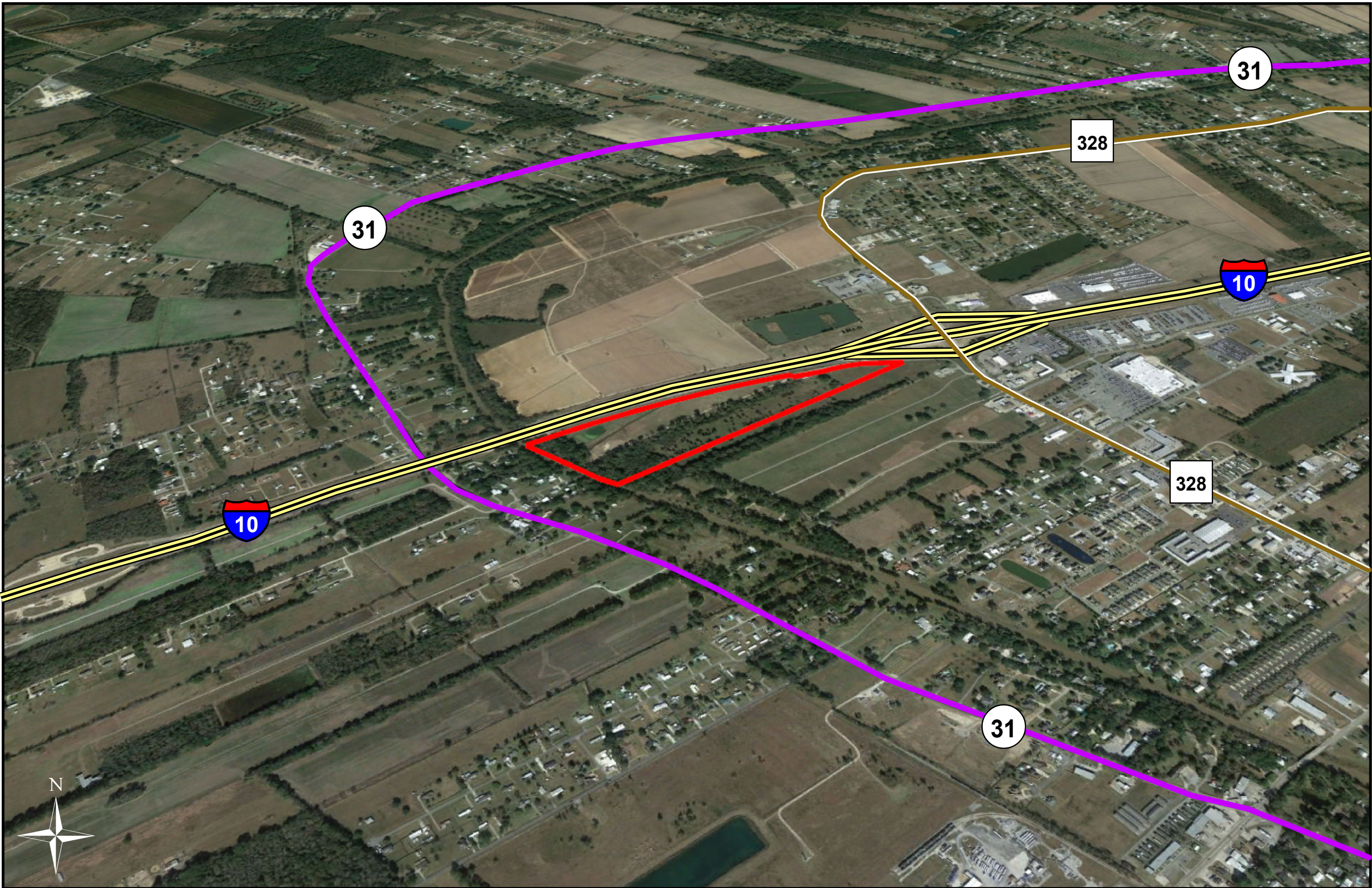
One Acadiana



St. Martin Parish

LEGEND

- Site Boundary (43± ac.)
- Existing Roadway
 - Interstate
 - Urban State Highway
 - Rural State Highway



Date: 11/17/2022
Project Number: 214002
Drawn By: BMS
Checked By: EEB

General Notes:
1. No attempt has been made by CSRS, Inc. to verify site boundary, title, actual legal ownership, deed restrictions, servitudes, easements, or other burdens on the property, other than that furnished by the client or his representative.
2. Transportation data from 2013 TIGER datasets via U.S. Census Bureau at <ftp://ftp2.census.gov/geo/tiger/TIGER2013>.
3. 2015 aerial imagery from Google Earth and may not reflect current ground conditions.

