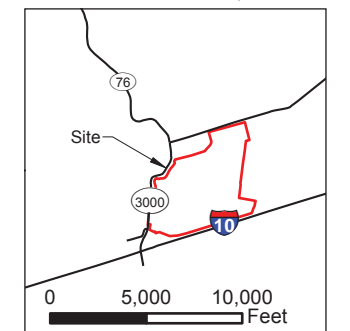
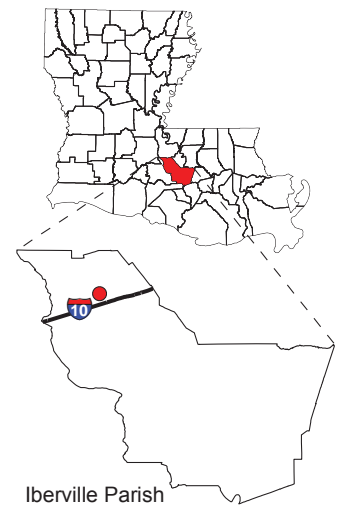


# Exhibit L. Grace Farms East Natural Gas Infrastructure Map

Project:  
 Grace Farms East  
 Iberville Parish, LA

Client:  
 BRAC

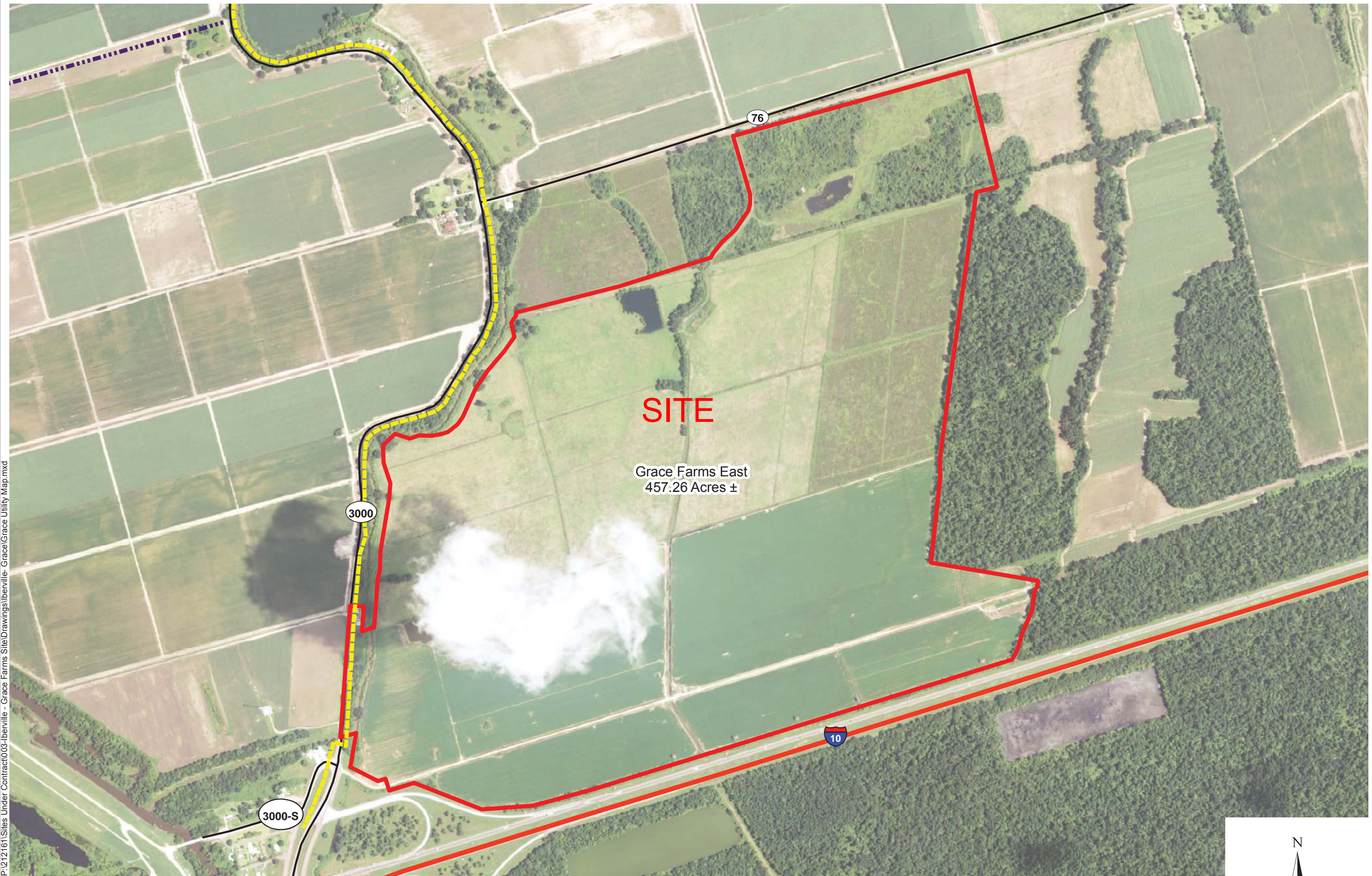


- Legend:**
- 3" Natural Gas
  - Henry Production Co. Natural Gas Pipeline
  - Interstate Highway
  - State Roads
  - Site Boundary

Baton Rouge Area Chamber.

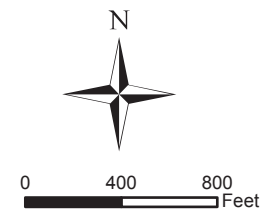
Source:  
 GIS features acquired from public domain state and federal data sources (GNIS, LOSCO, US Census Bureau).  
 Imagery: 2010 USDA NAIP

Date:	5/22/2013
Project Number:	212161.20.003
GIS Analyst:	JAY
Checked By:	TMG



**GENERAL NOTES:**

- Natural gas line utility information provided by verbal interview with Brian Berthelot, Iberville Parish Utilities Director.
- Henry Production Co. gas line information provided by visual inspection of the site. Henry Production Co. gas line is not available as a utility service line.



**CSRS**  
 IMAGINE SHAPE DELIVER

6767 Perkins Road Suite 200 Baton Rouge, LA 70808  
 Telephone: 225 769-0546 Fax: 225 767-0060  
 www.csrsonline.com

P:\212161\Sites Under Contract\003-Iberville - Grace Farms Site\Drawings\Iberville - Grace Farms Utility Map.mxd