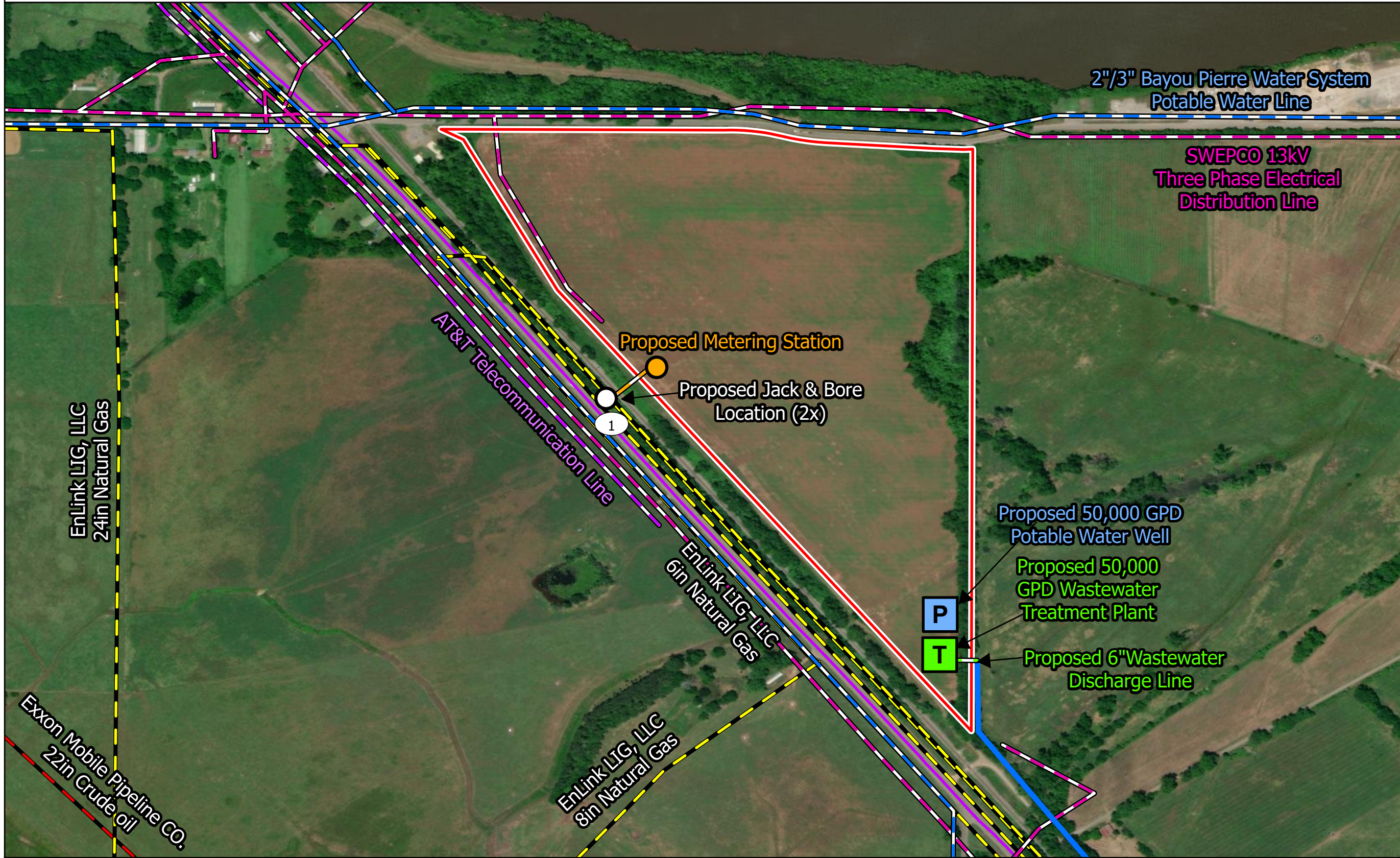


Exhibit CC: Red River Parish Port Site All Utilities Infrastructure Map

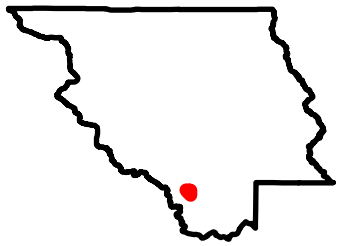
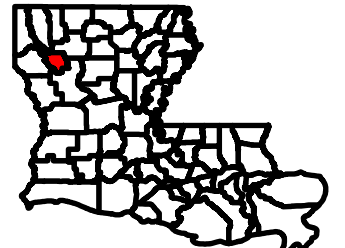


Red River Parish Port Site All Utilities Infrastructure Map

Site Exhibit for
Red River Parish Port Site
Red River Parish



NLEP



Legend

- Site Boundary (±69.23 ac.)
- 2" & 3" Bayou Pierre Water System Potable Water Line
- 13kV SWEPCO Electrical Distribution Line
- AT&T Telecommunication Line
- Proposed Wastewater Discharge Line
- Proposed Discharge Stream
- Proposed 4" Natural Gas Extension
- Proposed Metering Station
- P Proposed 50,000 GPD Potable Water Well
- T Proposed 50,000 GPD Wastewater Treatment Plant
- Stream
- National Pipeline Mapping System**
- CRUDE OIL
- NATURAL GAS-LEAN
- Major Road**
- Interstate
- US Highway
- State Highway
- Railroad

P:\216269\017 - Red River Parish Port\CAD\GIS_templates\GIS\Red River All Utilities

General Notes:

1. The information presented herein is for planning purposes only. Further detailed due diligence MUST be completed prior to making decisions regarding the site.
2. No attempt has been made by CSRS, Inc. to verify site boundary, title, actual legal ownership, deed restrictions, servitudes, easements, or other burdens on the property, other than that furnished by the client or his representative.
3. Transportation data from 2023 TIGER datasets via U.S. Census Bureau at <https://www.census.gov/geographies/mapping-files/time-series/geo/tiger-line-file.html>.
4. Aerial imagery is compiled from multiple different sources to create one cohesive image and may not reflect current ground condition.
5. Utility information from visual inspection and/or the individual utility operators. Exact field location has not been determined by survey. The lines shown are an approximate representation only and may have been offset for depiction purposes.

CSRS

0 300 600

Feet

Date: 6/21/2024
 Project Number: 216269
 Drawn By: BMS
 Checked By: EEB