



**BUSINESS
DEVELOPMENT**
ARKANSAS

MAUMELLE CHAMPS SITE

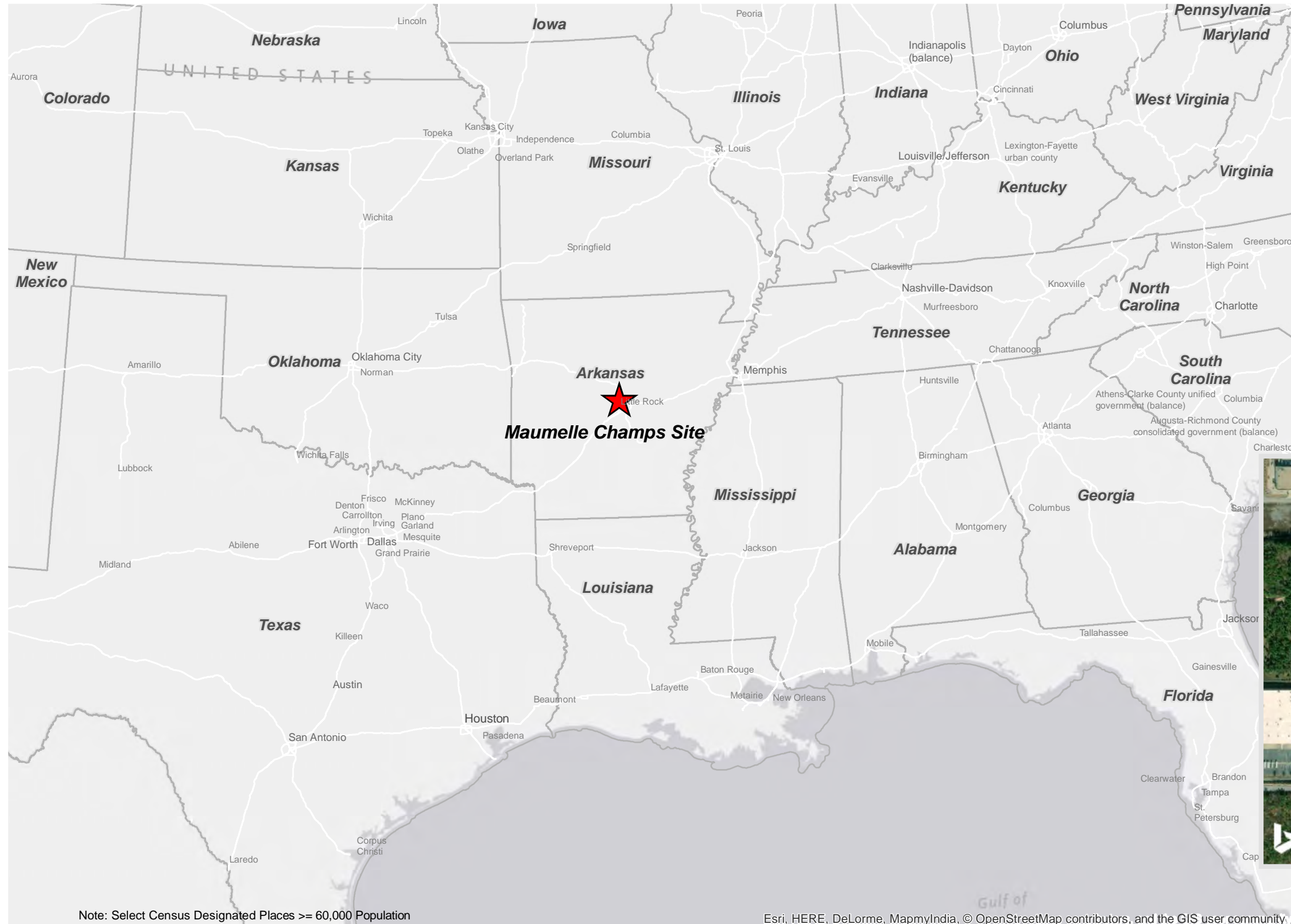
Pulaski County, AR

425 West Capital Ave Suite 2700
Little Rock, AR 72201

Phone: 1-888-301-5861

goentergy.com/ar

Coordinates: -92.380418, 34.869945

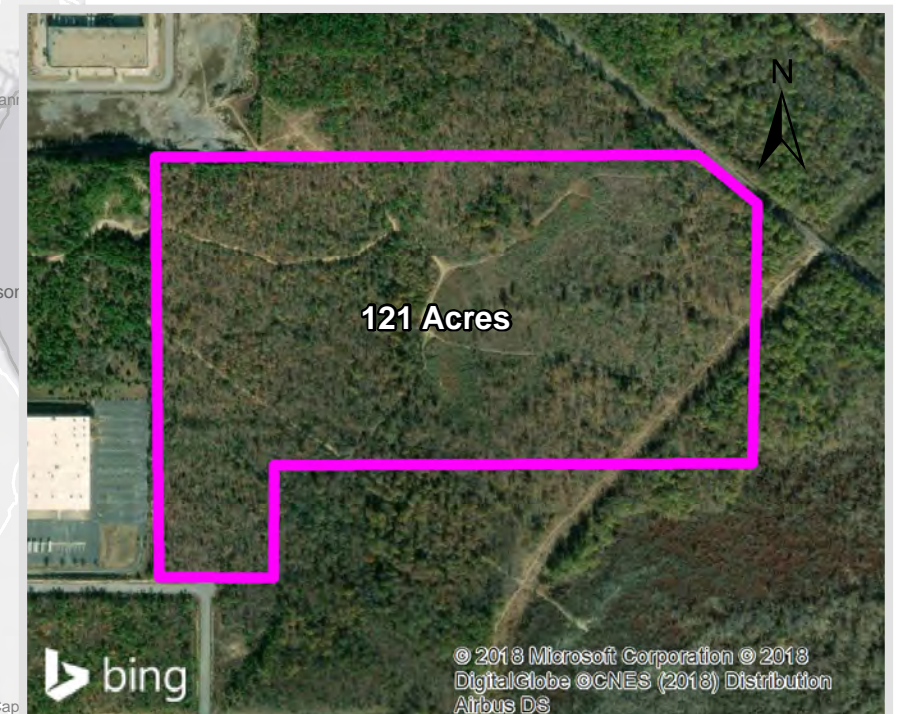


Note: Select Census Designated Places >= 60,000 Population

Esri, HERE, DeLorme, MapmyIndia, © OpenStreetMap contributors, and the GIS user community

Contents

- Transportation, Regional
- Transportation, Immediate Vicinity
- Aerial
- Topographic Map
- Elevation Contours
- FEMA Flood Hazard
- National Wetland Inventory
- Pipeline Infrastructure
- Electrical Infrastructure
- Surrounding Use Map



© 2018 Microsoft Corporation © 2018
DigitalGlobe © CNES (2018) Distribution
Airbus DS



**BUSINESS
DEVELOPMENT**
ARKANSAS

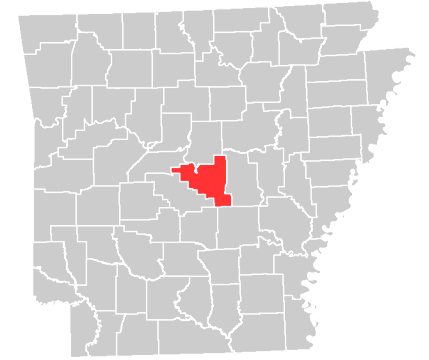
Maumelle Champs Site Transportation, Regional

425 West Capitol Ave, Suite 2700
Little Rock, AR 72201

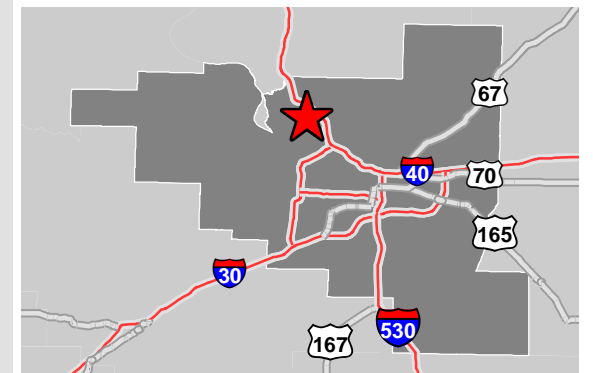
Phone: 1-888-301-5861

goentergy.com/ar

PULASKI COUNTY



VICINITY MAP



LEGEND

- ★ SitePoint
- ★ Port
- ✈ Airports
- Interstate
- U.S.

NOTE

These drawings are provided merely to assist in economic development efforts. The Entergy Companies make no representations or warranties whatsoever regarding the accuracy or completeness of any information contained herein nor the condition or suitability of any properties. Users should direct inquiries about any property to the listing broker for that property.

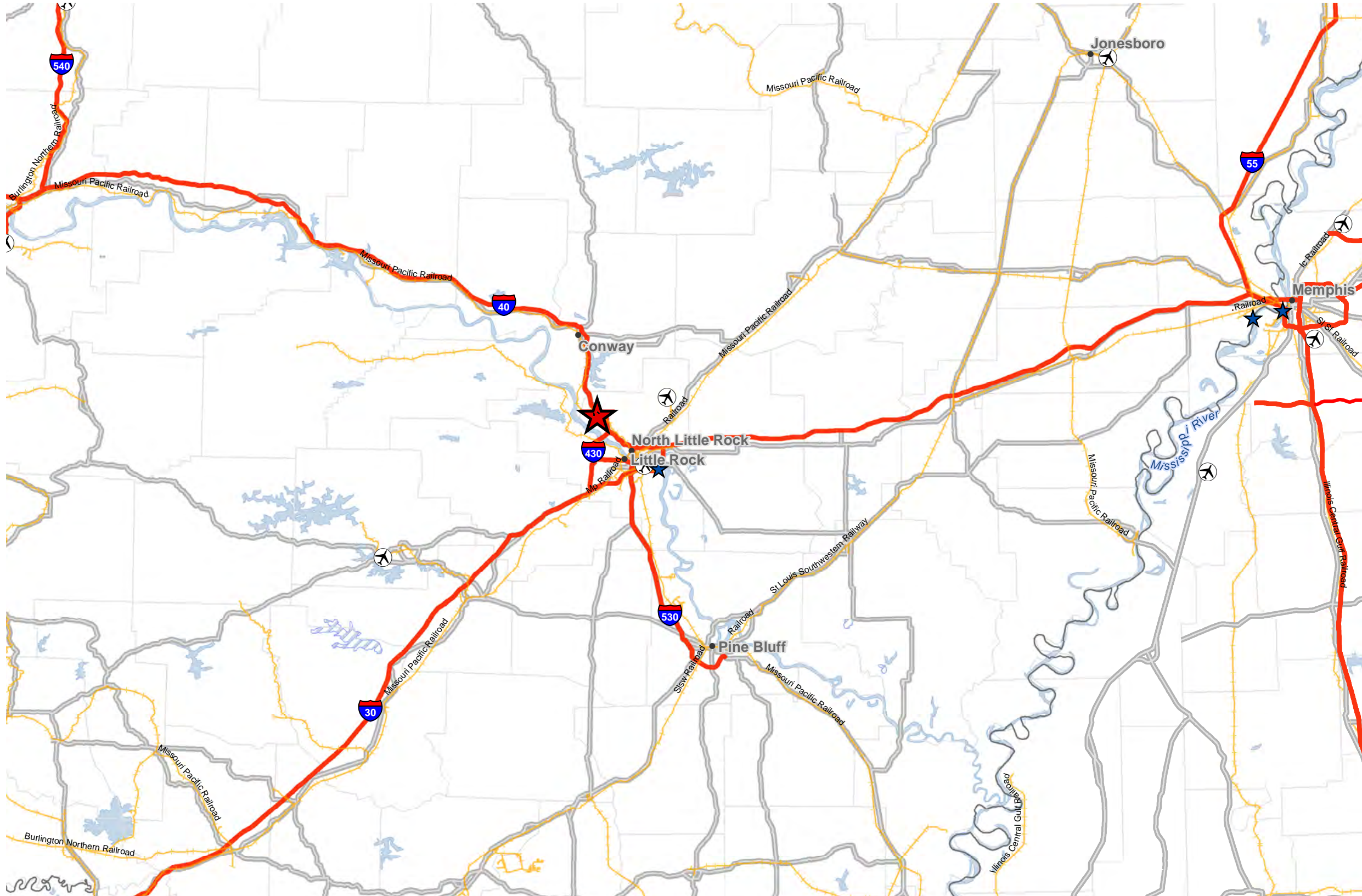
SOURCE

Roads: Census/TIGER database, 2014
Railroads: Federal Railroad Administration,
Bureau of Transportation Statistics, ESRI, 2014
ESRI Basemaps; ESRI Datamaps 10.2

Created by: RPG
Date: 01/2019

0 20 40
Miles

0 25.34 50.68
Kilometers





**BUSINESS
DEVELOPMENT**
ARKANSAS

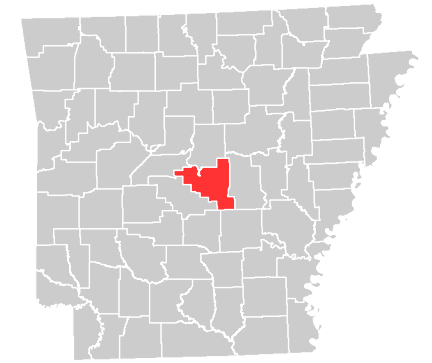
Maumelle Champs Site Transportation, Immediate

425 West Capitol Ave, Suite 2700
Little Rock, AR 72201

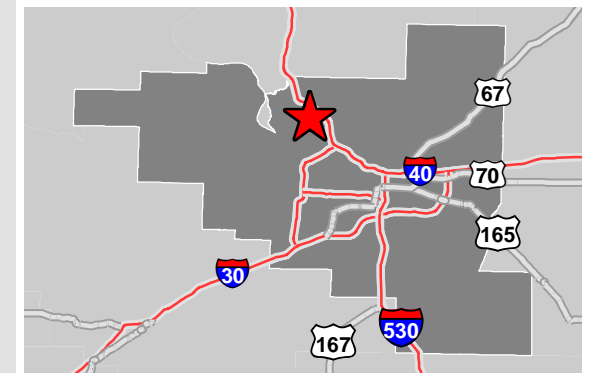
Phone: 1-888-301-5861

goentergy.com/ar

PULASKI COUNTY



VICINITY MAP



LEGEND

- Site Boundary
- Railroad
- Interstate Highway
- U.S. Highway
- State Highway

NOTE

These drawings are provided merely to assist in economic development efforts. The Entergy Companies make no representations or warranties whatsoever regarding the accuracy or completeness of any information contained herein nor the condition or suitability of any properties. Users should direct inquiries about any property to the listing broker for that property.

SOURCE

Roadway: Arkansas GIS Office Download 11/2018
Rail: Bureau of Transportation Stats 2014

Created by: RPG
Date: 01/2019

0 1,500 3,000
Feet

0 360 720
Meters



© 2018 Microsoft Corporation © 2018 DigitalGlobe © CNES (2018) Distribution Airbus DS



BUSINESS
DEVELOPMENT
ARKANSAS

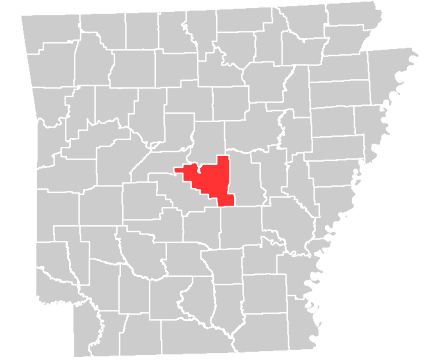
Maumelle Champs Site Aerial

425 West Capitol Ave, Suite 2700
Little Rock, AR 72201

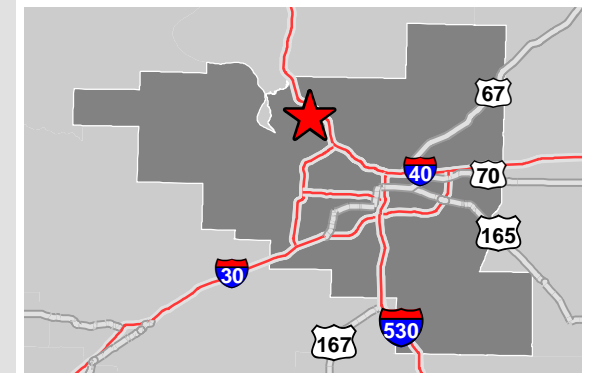
Phone: 1-888-301-5861

goentergy.com/ar

PULASKI COUNTY



VICINITY MAP



- Site Boundary
- Railroad

NOTE

These drawings are provided merely to assist in economic development efforts. The Entergy Companies make no representations or warranties whatsoever regarding the accuracy or completeness of any information contained herein nor the condition or suitability of any properties. Users should direct inquiries about any property to the listing broker for that property.

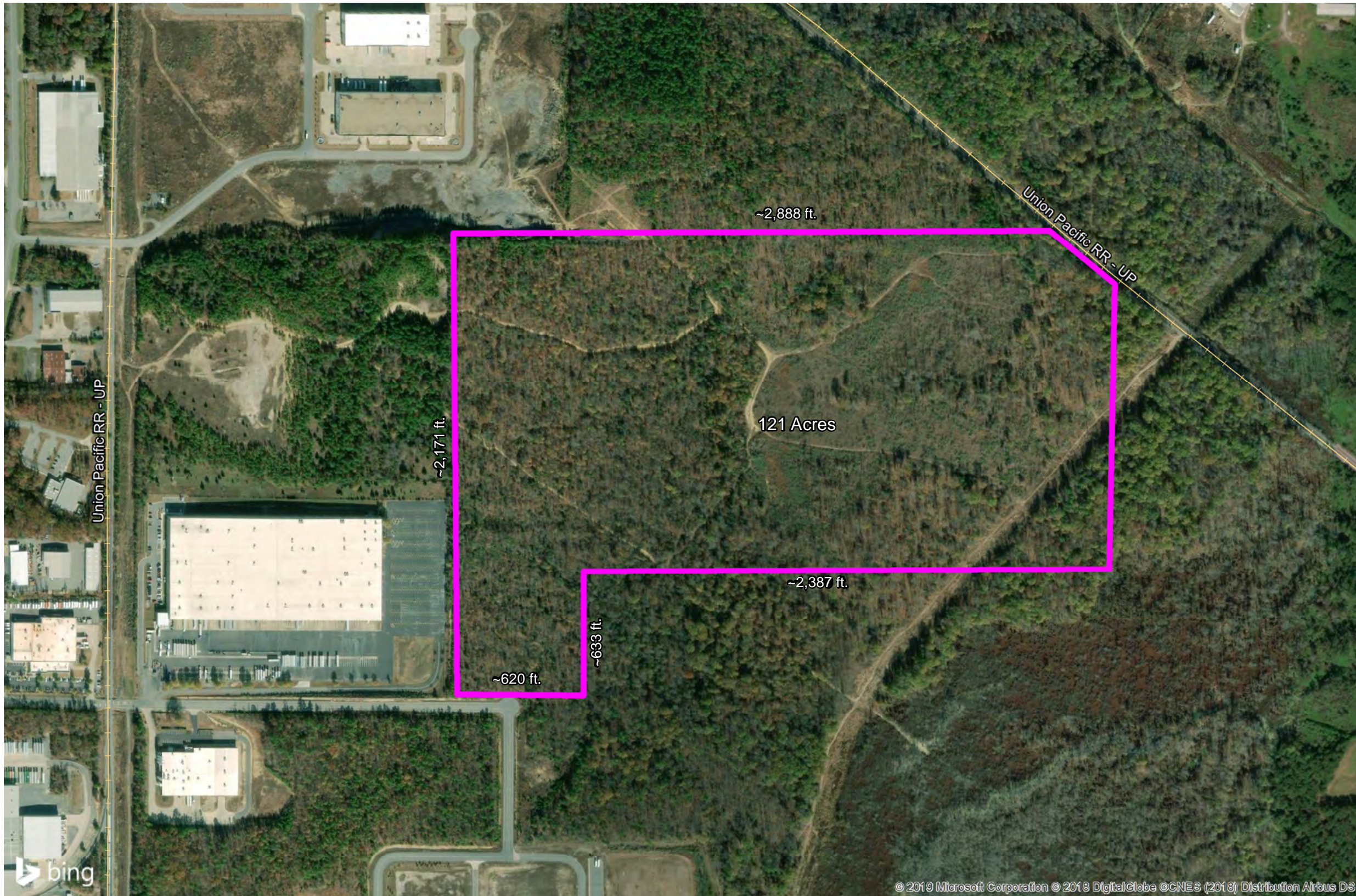
SOURCE

Survey: Dimensions rounded from Survey of 121.482 acres in T3N R13W City fo Maumelle, Pulaski County, Arkansas by The Holloway Firm, Inc. , Dated 4/22/2005

Created by: RPG
Date: 01/2019

0 500 1,000
Feet

0 120 240
Meters



© 2019 Microsoft Corporation © 2018 DigitalGlobe ©CNES (2016) Distribution Airbus DS



**BUSINESS
DEVELOPMENT**
ARKANSAS

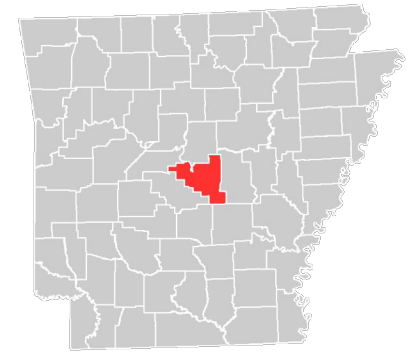
Maumelle Champs Site Proposed Building Layout 1

425 West Capitol Ave, Suite 2700
Little Rock, AR 72201

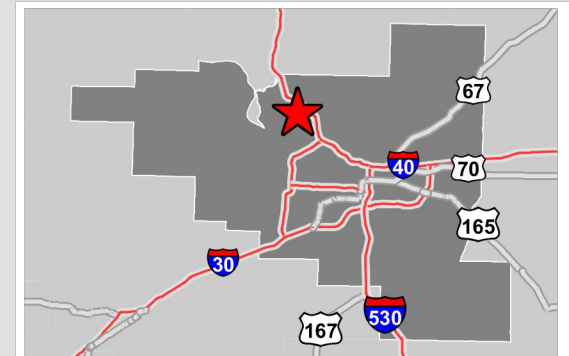
Phone: 1-888-301-5861

goentergy.com/ar

PULASKI COUNTY



VICINITY MAP



LEGEND

- Site Boundary
- Archaeological Site
- Wetlands
- Wetlands (under mitigation)
- Streams (under mitigation)

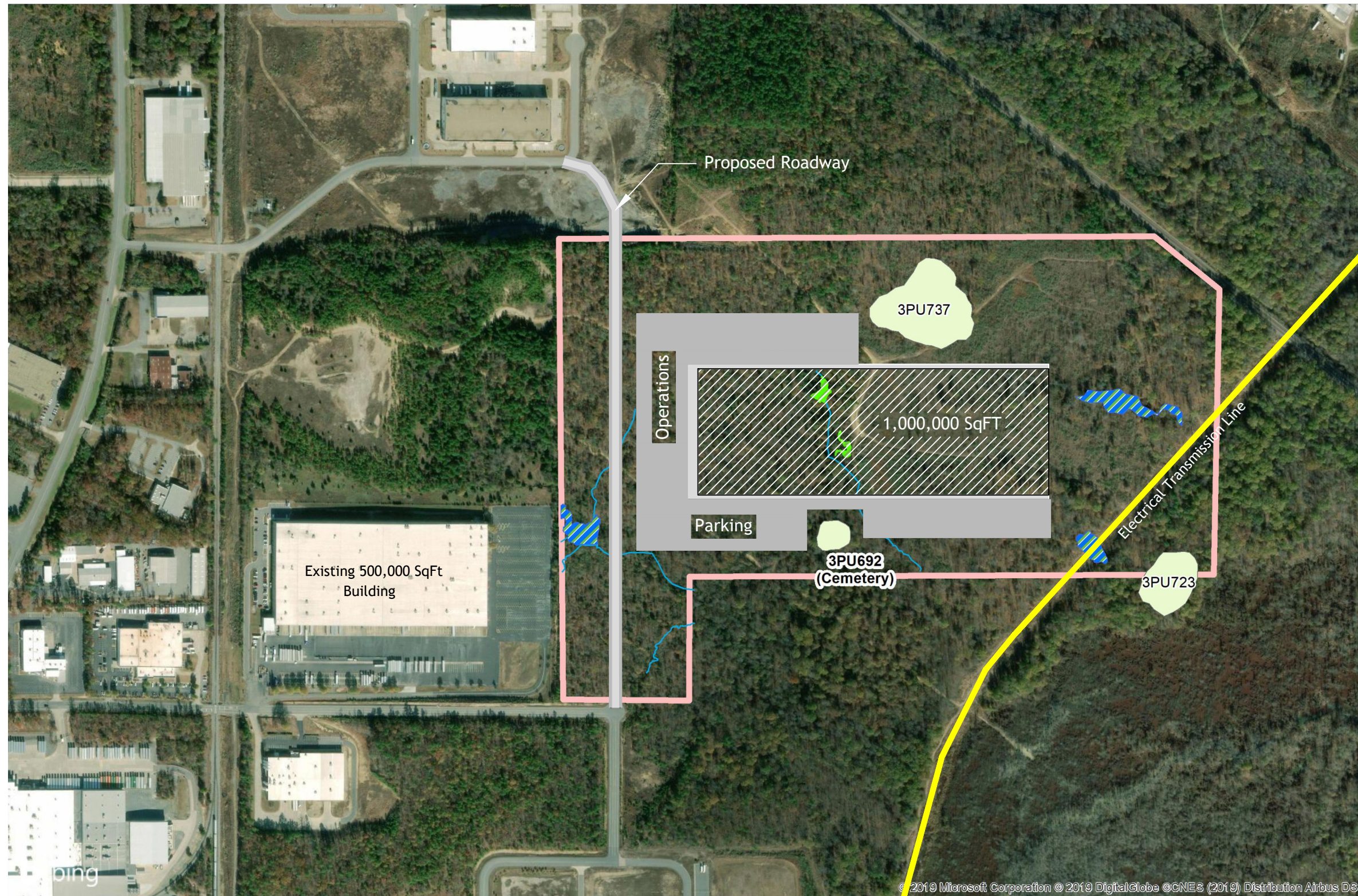
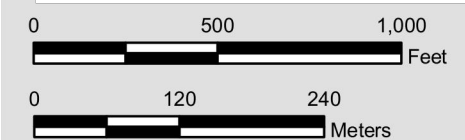
NOTE

These drawings are provided merely to assist in economic development efforts. The Entergy Companies make no representations or warranties whatsoever regarding the accuracy or completeness of any information contained herein nor the condition or suitability of any properties. Users should direct inquiries about any property to the listing broker for that property.

SOURCE

Cultural Resources: Panamerican Consultants, Inc,
Report date April 23, 2019.
Jurisdictional Determination: GBM and Associates,
Report date April 25, 2019.

Created by: RPG
Date: 05/2019



© 2019 Microsoft Corporation © 2019 DigitalGlobe © CNES (2019) Distribution Airbus DS

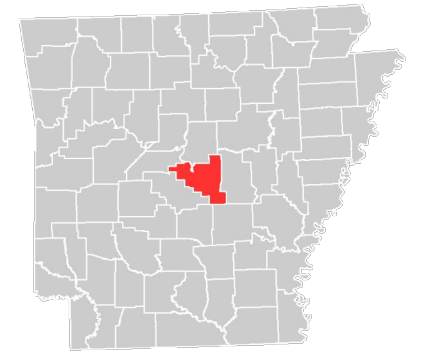


**BUSINESS
DEVELOPMENT**
ARKANSAS

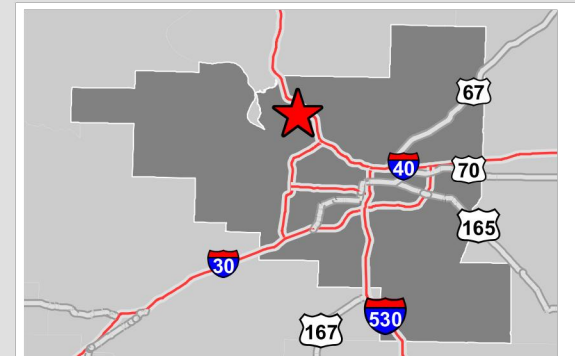
Maumelle Champs Site Proposed Building Layout 2

425 West Capitol Ave, Suite 2700
Little Rock, AR 72201
Phone: 1-888-301-5861

PULASKI COUNTY



VICINITY MAP



LEGEND

- Site Boundary
- Archaeological Site
- Wetlands
- Wetlands (under mitigation)
- Streams (under mitigation)

NOTE

These drawings are provided merely to assist in economic development efforts. The Entergy Companies make no representations or warranties whatsoever regarding the accuracy or completeness of any information contained herein nor the condition or suitability of any properties. Users should direct inquiries about any property to the listing broker for that property.

SOURCE

Cultural Resources: Panamerican Consultants, Inc,
Report date April 23, 2019.
Jurisdictional Determination: GBM and Associates,
Report date April 25, 2019.

Created by: RPG
Date: 05/2019

0 500 1,000
Feet

0 120 240
Meters





**BUSINESS
DEVELOPMENT**
ARKANSAS

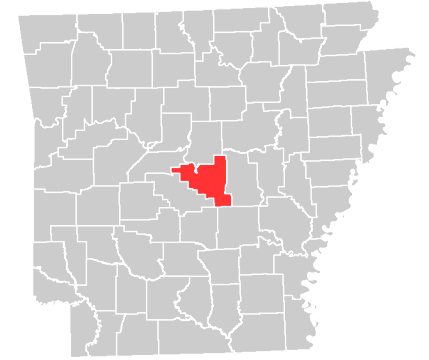
Maumelle Champs Site Topographic Map

425 West Capitol Ave, Suite 2700
Little Rock, AR 72201

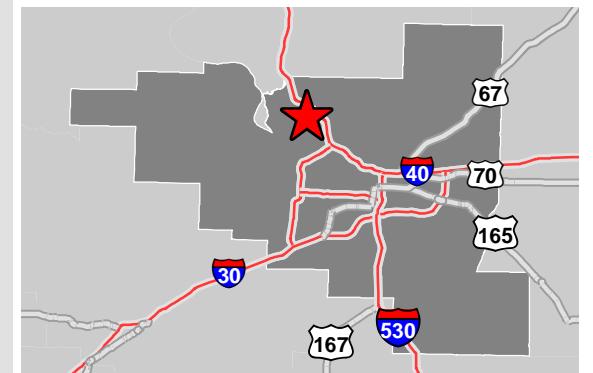
Phone: 1-888-301-5861

goentergy.com/ar

PULASKI COUNTY



VICINITY MAP



 Site Boundary

NOTE

These drawings are provided merely to assist in economic development efforts. The Entergy Companies make no representations or warranties whatsoever regarding the accuracy or completeness of any information contained herein nor the condition or suitability of any properties. Users should direct inquiries about any property to the listing broker for that property.

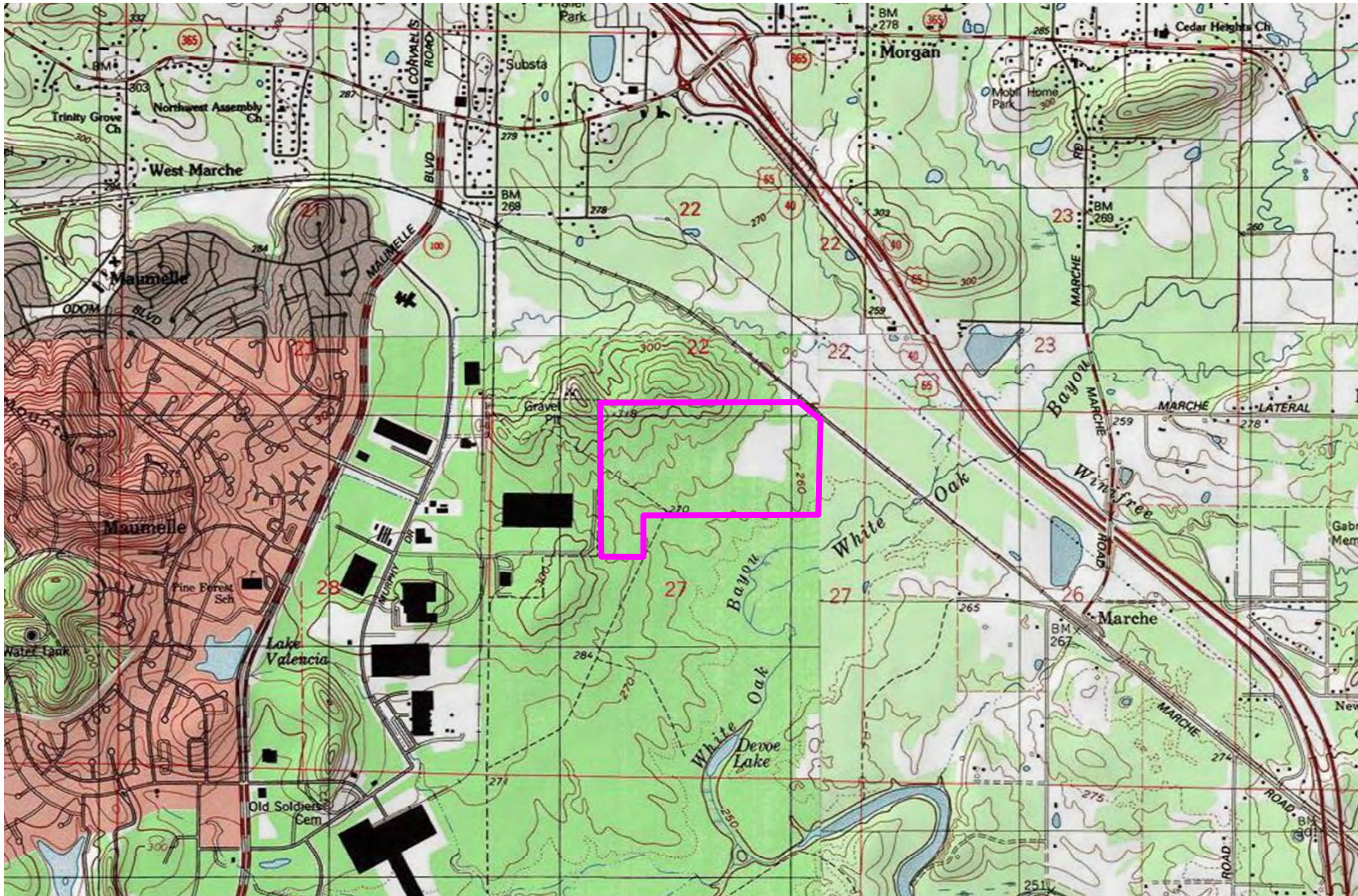
SOURCE

Service Layer Credits: Copyright:© 2013 National Geographic Society, i-cubed

Created by: RPG
Date: 01/2019

0 1,500 3,000
Feet

0 360 720
Meters





**BUSINESS
DEVELOPMENT**
ARKANSAS

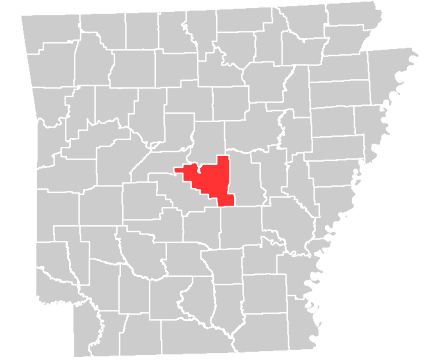
Maumelle Champs Site Elevation Contours

425 West Capitol Ave, Suite 2700
Little Rock, AR 72201

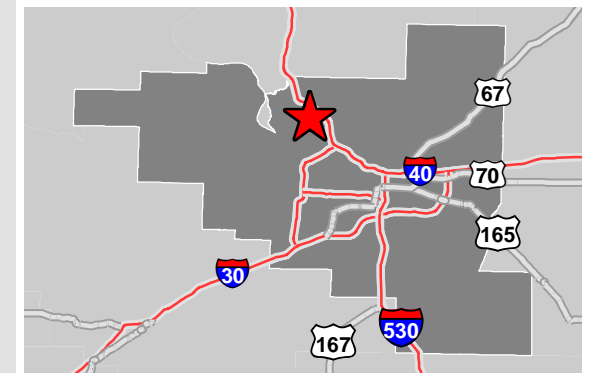
Phone: 1-888-301-5861

goentergy.com/ar





PULASKI COUNTY



VICINITY MAP



LEGEND

-  Site Boundary
- Elevation Contours**
 -  80 ft. - 85.0 ft.
 -  85.1 ft. - 95.0 ft.
 -  95.1 ft. - 115.0 ft.

NOTE

These drawings are provided merely to assist in economic development efforts. The Entergy Companies make no representations or warranties whatsoever regarding the accuracy or completeness of any information contained herein nor the condition or suitability of any properties. Users should direct inquiries about any property to the listing broker for that property.

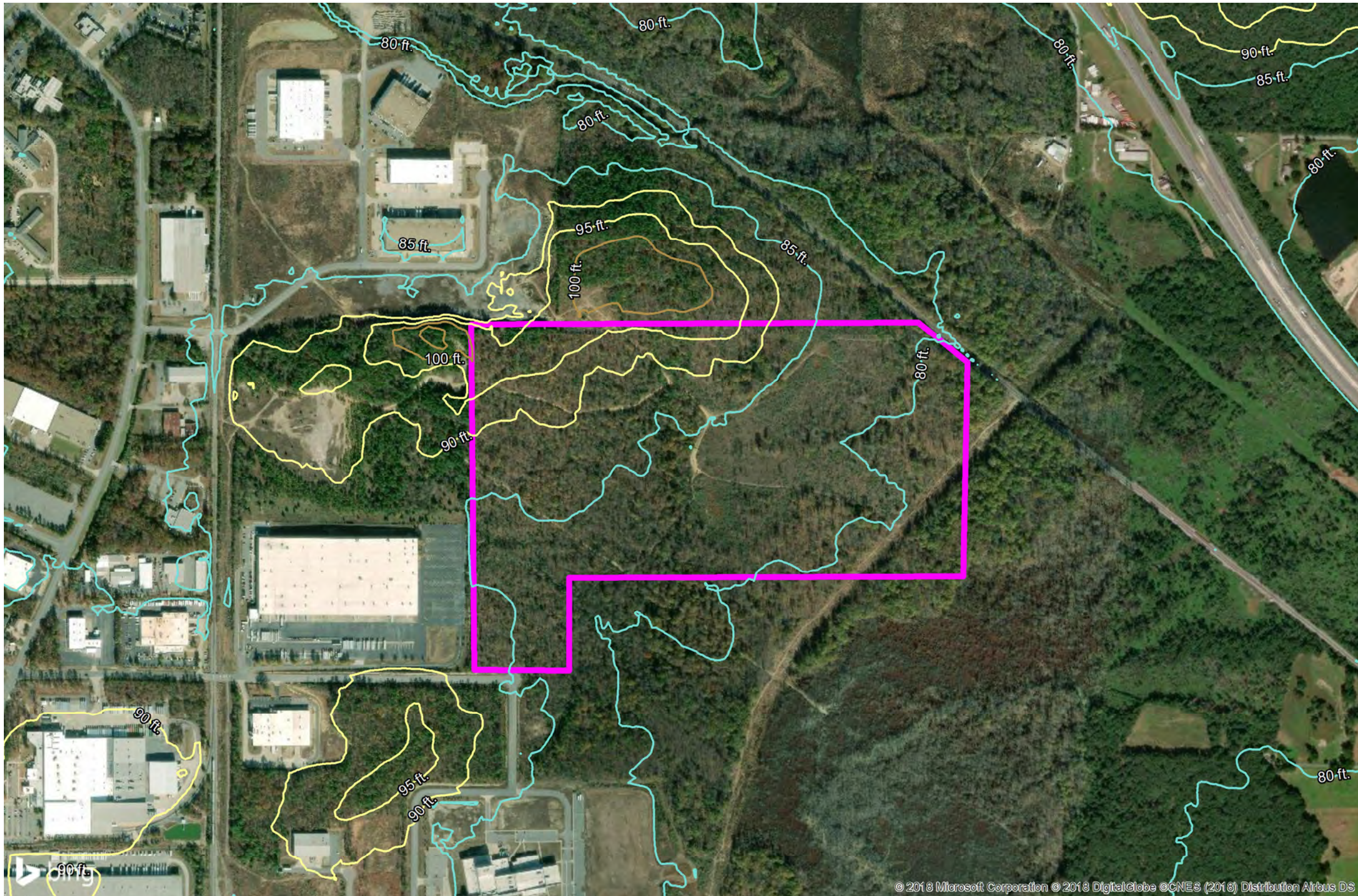
SOURCE

Contours made from USGS National Elevation
Data Set Rasters

Created by: RPG
Date: 01/2019

0 667 1,334
Feet

0 160 320
Meters



© 2018 Microsoft Corporation © 2018 DigitalGlobe © CNES (2016) Distribution Airbus DS



BUSINESS
DEVELOPMENT
ARKANSAS

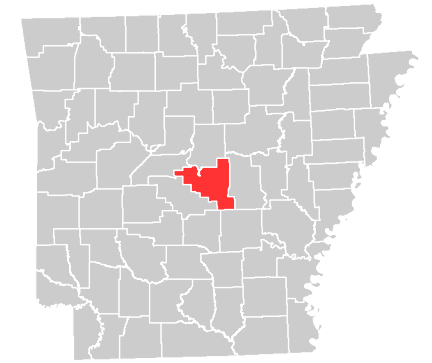
Maumelle Champs Site FEMA Flood Hazard

425 West Capitol Ave, Suite 2700
Little Rock, AR 72201

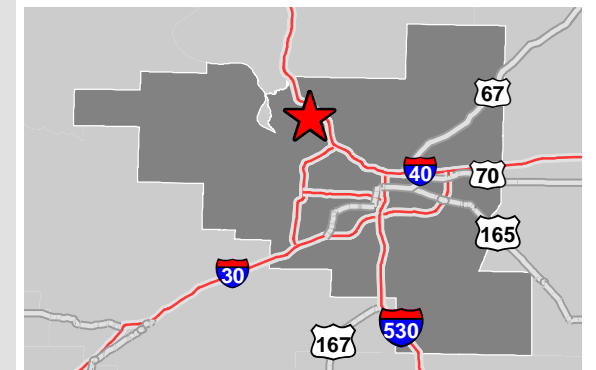
Phone: 1-888-301-5861

goentergy.com/ar

PULASKI COUNTY



VICINITY MAP



LEGEND

- Site Boundary
- Base Flood Elev
- Flood Hazard**
 - AE,
 - AE, FLOODWAY
 - X, 0.2 PCT ANNUAL CHANCE FLOOD HAZARD
 - X, AREA OF MINIMAL FLOOD HAZARD

NOTE

These drawings are provided merely to assist in economic development efforts. The Entergy Companies make no representations or warranties whatsoever regarding the accuracy or completeness of any information contained herein nor the condition or suitability of any properties. Users should direct inquiries about any property to the listing broker for that property.

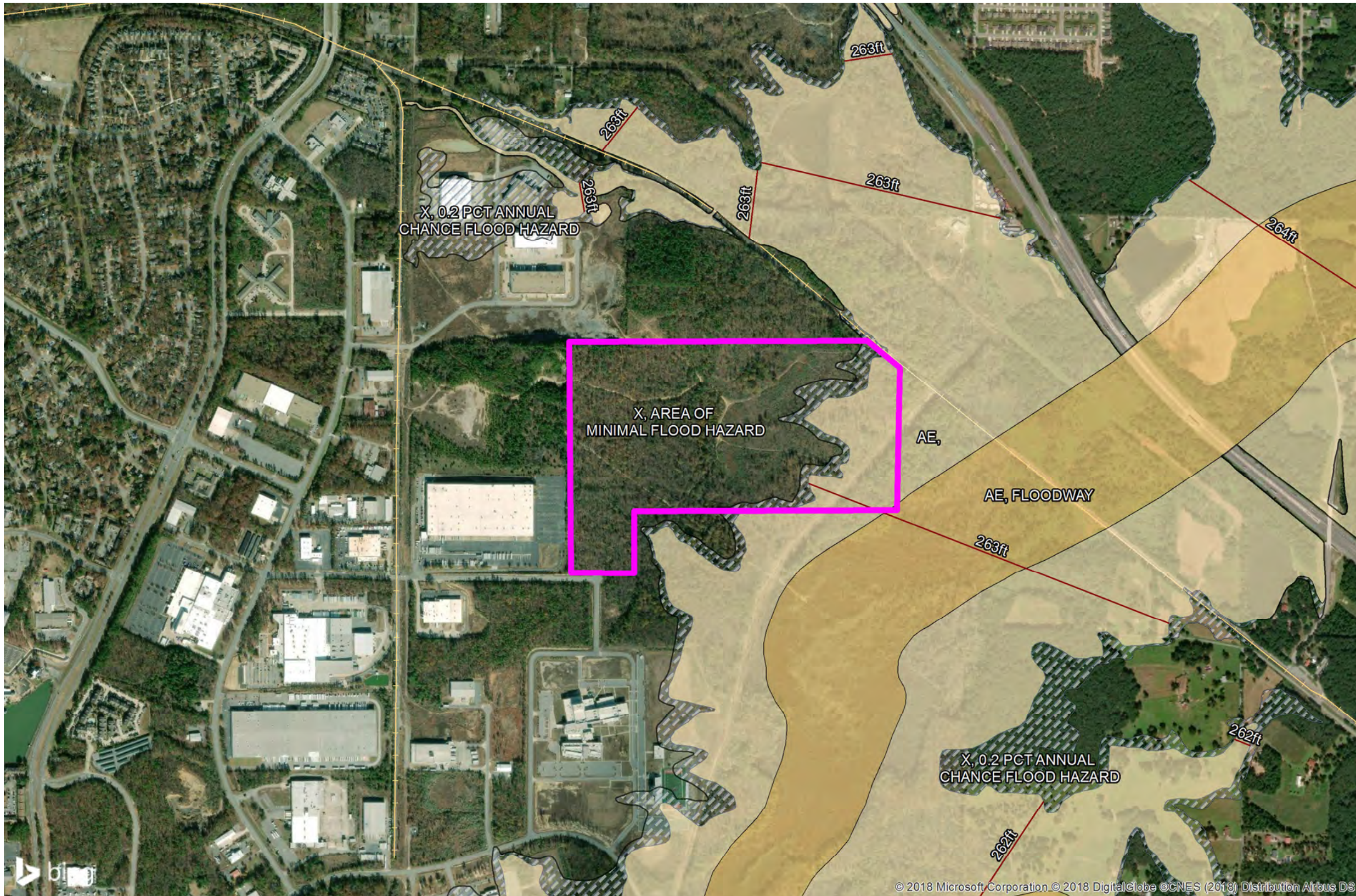
SOURCE

FEMA, DFirm 05119C_LOMC, LOMR 18-06-0091,
Publication Date 4/20/2018

Created by: RPG
Date: 01/2019

0 1,000 2,000
Feet

0 240 480
Meters





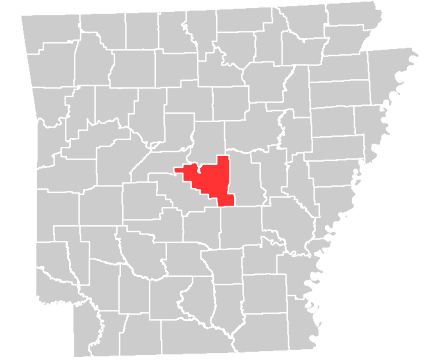
Maumelle Champs Site
National Wetlands Inventory

425 West Capitol Ave, Suite 2700
Little Rock, AR 72201

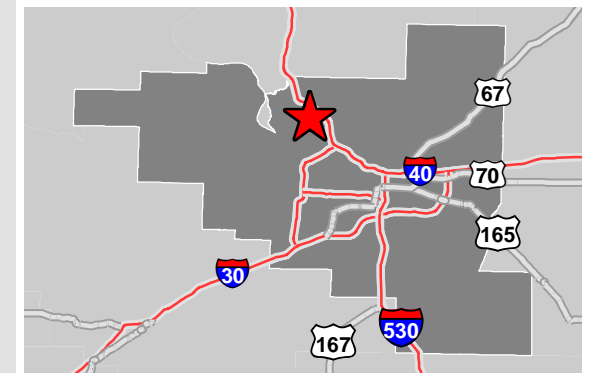
Phone: 1-888-301-5861

goentergy.com/ar

PULASKI COUNTY



VICINITY MAP



LEGEND

Site Boundary

WETLANDS

- Freshwater Emergent Wetland
- Freshwater Forested/Shrub Wetland
- Freshwater Pond
- Lake
- Riverine

NOTE

These drawings are provided merely to assist in economic development efforts. The Entergy Companies make no representations or warranties whatsoever regarding the accuracy or completeness of any information contained herein nor the condition or suitability of any properties. Users should direct inquiries about any property to the listing broker for that property.

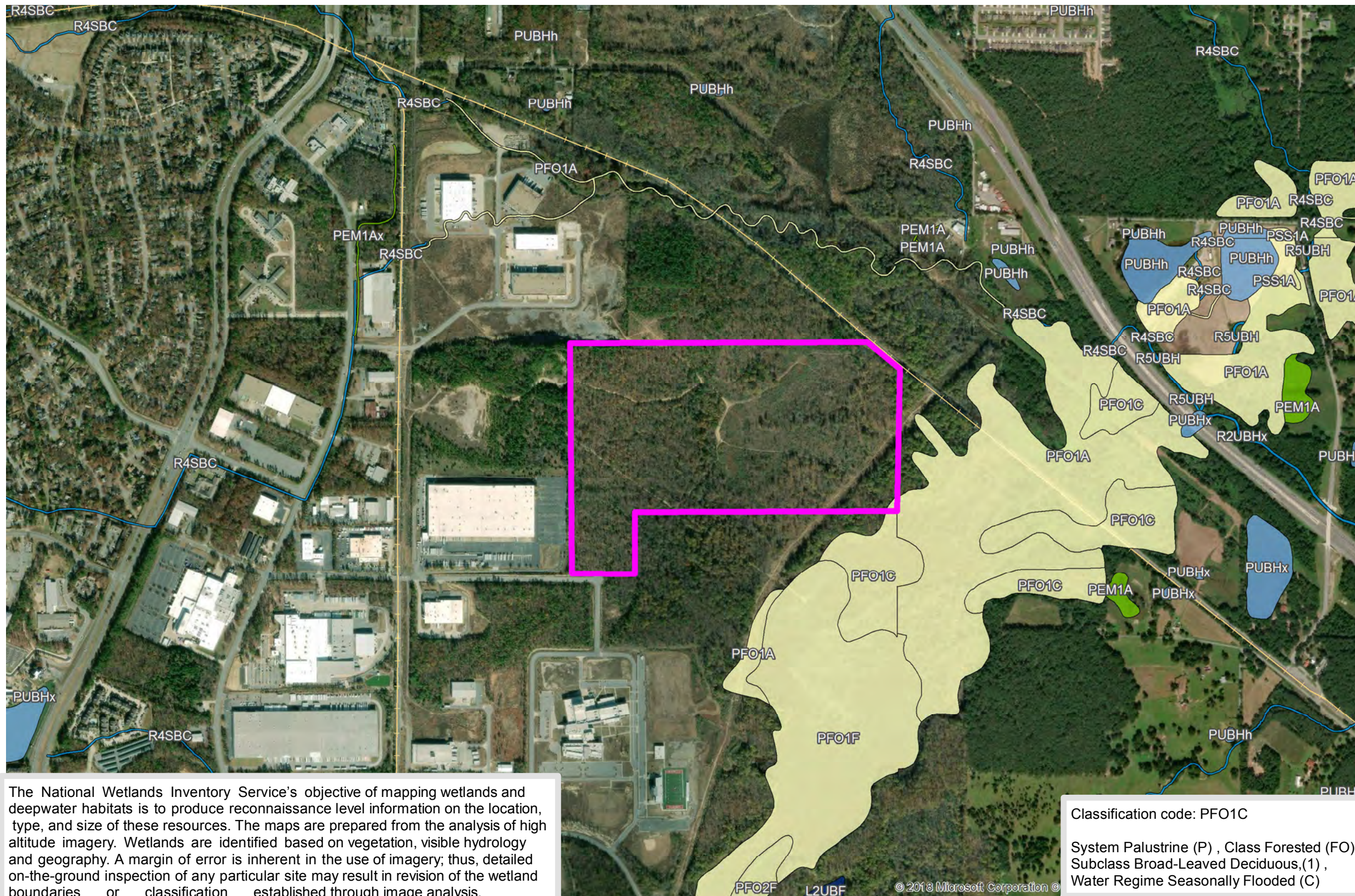
SOURCE

US Fish and Wildlife Service, National Wetlands Inventory,
HU8_11110207_Wetlands

Created by: RPG
Date: 01/2019

0 1,000 2,000
Feet

0 240 480
Meters



The National Wetlands Inventory Service's objective of mapping wetlands and deepwater habitats is to produce reconnaissance level information on the location, type, and size of these resources. The maps are prepared from the analysis of high altitude imagery. Wetlands are identified based on vegetation, visible hydrology and geography. A margin of error is inherent in the use of imagery; thus, detailed on-the-ground inspection of any particular site may result in revision of the wetland boundaries or classification established through image analysis.

Classification code: PFO1C

System Palustrine (P) , Class Forested (FO),
Subclass Broad-Leaved Deciduous,(1) ,
Water Regime Seasonally Flooded (C)

© 2018 Microsoft Corporation



BUSINESS
DEVELOPMENT
ARKANSAS

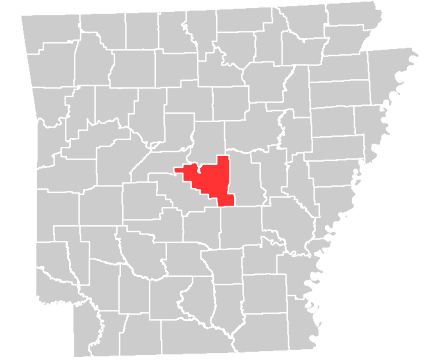
Maumelle Champs Site Pipeline Infrastructure

425 West Capitol Ave, Suite 2700
Little Rock, AR 72201

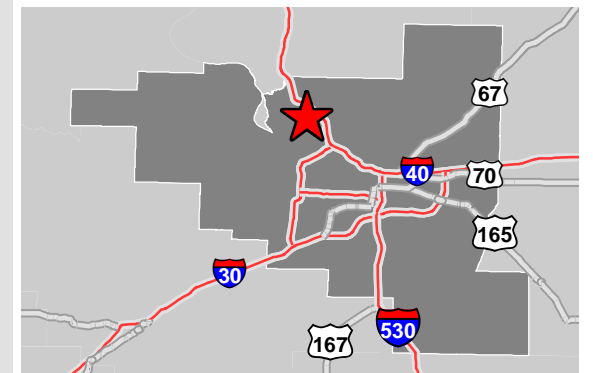
Phone: 1-888-301-5861

goentergy.com/ar

PULASKI COUNTY



VICINITY MAP



LEGEND

Site Boundary

Pipeline Infrastructure

Natural Gas

NOTE

These drawings are provided merely to assist in economic development efforts. The Entergy Companies make no representations or warranties whatsoever regarding the accuracy or completeness of any information contained herein nor the condition or suitability of any properties. Users should direct inquiries about any property to the listing broker for that property.

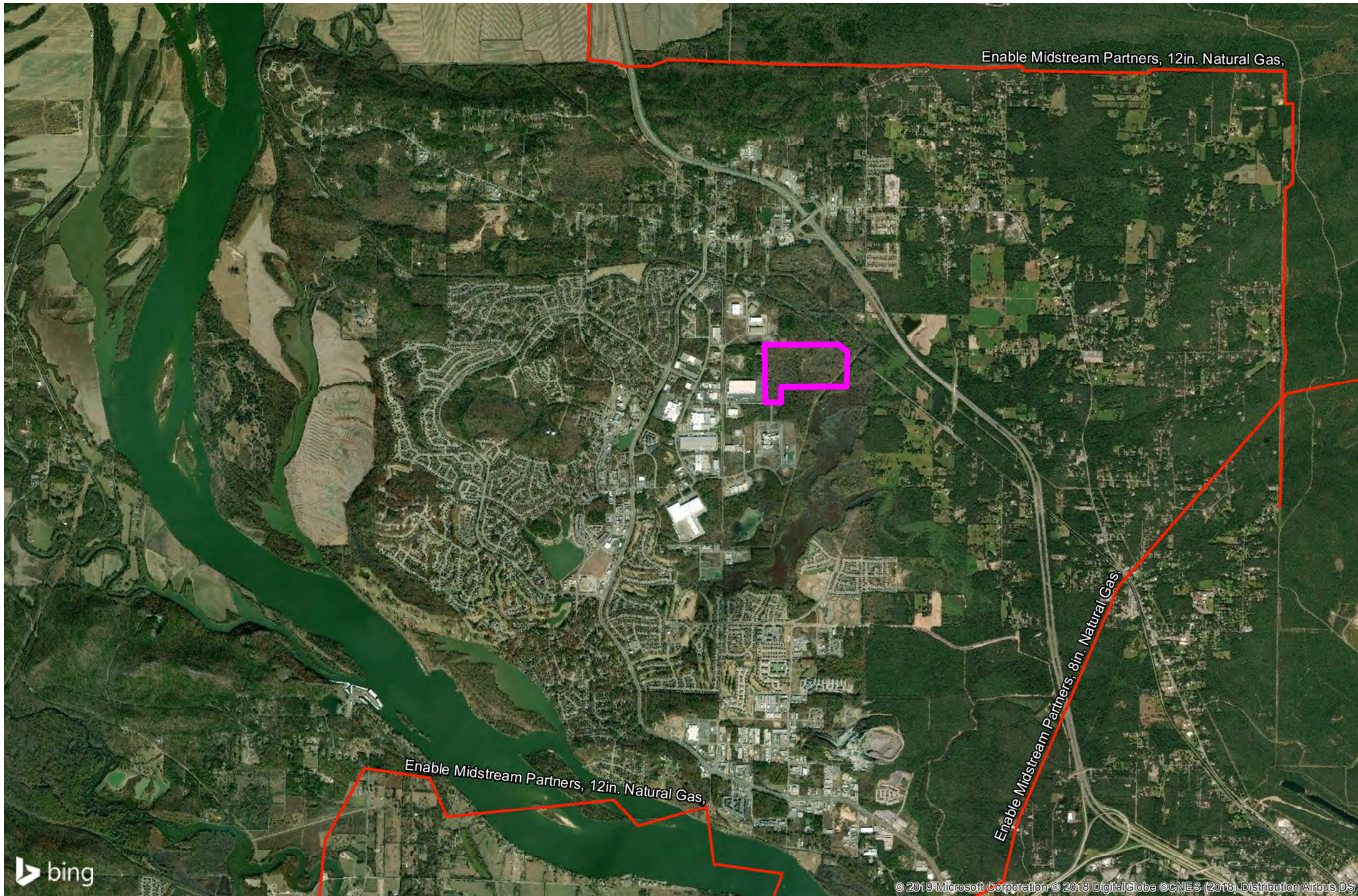
SOURCE

Pipelines: 2018 Pennwell Data

Created by: RPG
Date: 01/2019

0 4,000 8,000
Feet

0 960 1,920
Meters





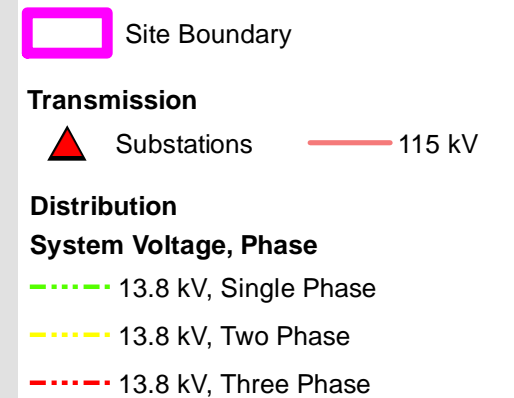
425 West Capitol Ave, Suite 2700
Little Rock, AR 72201

goentergy.com/ar

PULASKI COUNTY

A map of the Dallas area showing major highways. A red star marks the location of the Dallas Police Department. The star is located near the intersection of Interstate 30 and Interstate 40. Other highways shown include Interstate 30, Interstate 40, Interstate 530, Interstate 67, Interstate 70, and Interstate 165. The map also shows the city limits of Dallas, which are shaded in gray.

LEGEND



NOTE

These drawings are provided merely to assist in economic development efforts. The Entergy Companies make no representations or warranties whatsoever regarding the accuracy or completeness of any information contained herein nor the condition or suitability of any properties. Users should direct inquiries about any property to the listing broker for that property.

SOURCE

Service Layer Credits: © 2019 Microsoft Corporation © 2018 DigitalGlobe
©CNES (2018) Distribution Airbus DS

Source: Transmission-Entergy, 2019;
Distribution-Entergy, 2019

Created by: RPG
Date: 01/2019

TRANSMISSION



DISTRIBUTION





**BUSINESS
DEVELOPMENT**
ARKANSAS

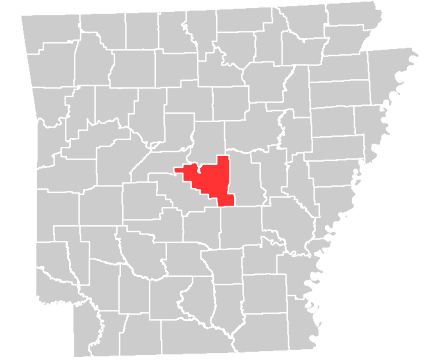
Maumelle Champs Site Surrounding Uses

425 West Capitol Ave, Suite 2700
Little Rock, AR 72201

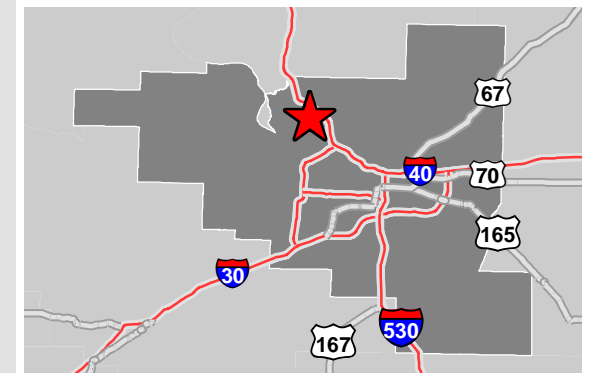
Phone: 1-888-301-5861

goentergy.com/ar

PULASKI COUNTY



VICINITY MAP



LEGEND

- Site Boundary
- Existing Industries
- Interstate Highway
- U.S. Highway
- State Highway

NOTE

These drawings are provided merely to assist in economic development efforts. The Entergy Companies make no representations or warranties whatsoever regarding the accuracy or completeness of any information contained herein nor the condition or suitability of any properties. Users should direct inquiries about any property to the listing broker for that property.

SOURCE

Roadway: Arkansas GIS Office Download 11/2018
Rail: Bureau of Transportation Stats 2014

Created by: RPG
Date: 01/2019

0 1,500 3,000
Feet

0 360 720
Meters

