

Exhibit Q.

Highway 1 Leonard Road Site

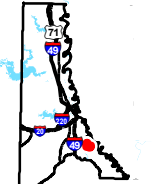
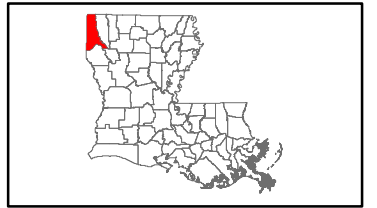
Telecommunications Infrastructure Map



Highway 1 Leonard Road Site Telecommunications Infrastructure Map





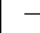

Highway 1 Leonard Road Site
Caddo Parish, LA

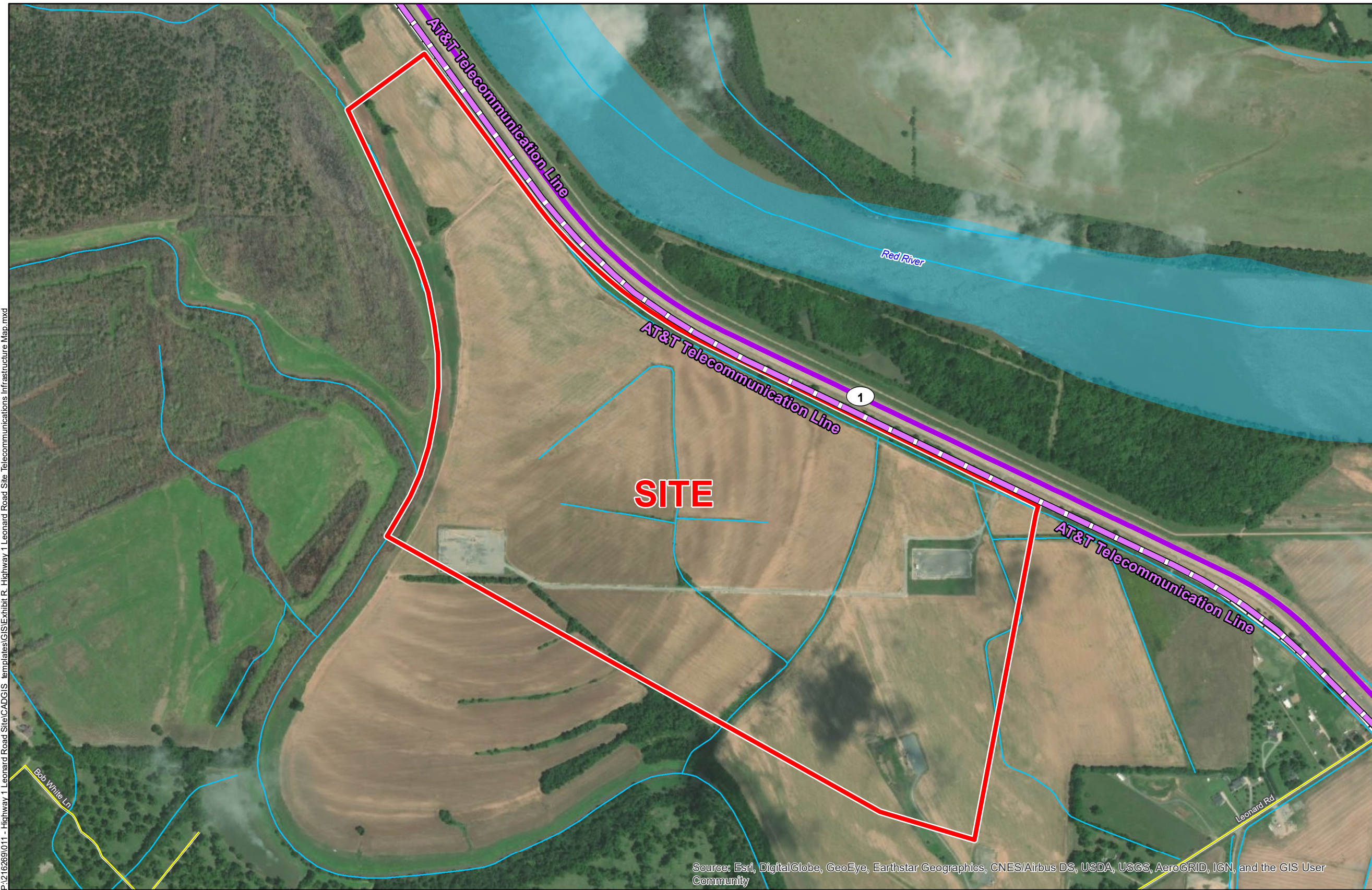
NLEP



Caddo Parish

LEGEND

-  Existing AT&T Telecommunication Lines
-  Site Boundary
- Existing Roadway**
-  4-Lane State Highway
-  Local Roads
-  Railroad
-  Stream
-  Waterbody

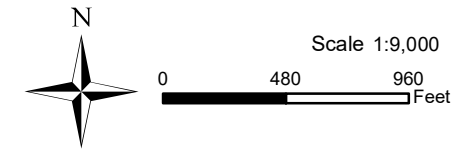


Source: Esri, DigitalGlobe, GeoEye, Earthstar Geographics, CNES/Airbus DS, USDA, USGS, AeroGRID, IGN, and the GIS User Community



Date:	7/21/2020
Project Number:	216269216269
Drawn By:	KPH
Checked By:	EEB

- General Notes:
1. No attempt has been made by CSRS, Inc. to verify site boundary, title, actual legal ownership, deed restrictions, servitudes, easements, or other burdens on the property, other than that furnished by the client or his representative.
 2. Transportation data from 2013 TIGER datasets via U.S. Census Bureau at <ftp://ftp2.census.gov/geo/tiger/TIGER2013>.
 3. Utility information from visual inspection and/or the individual utility operators. Exact field location has not been determined by survey. The lines shown are an approximate representation only and may have been offset for depiction purposes.
 4. 2015 aerial imagery from ESRI Online Basemaps and may not reflect current ground conditions.



P:\216269\011 - Highway 1 Leonard Road Site\CAD\GIS templates\GIS\Exhibit R - Highway 1 Leonard Road Site Telecommunications Infrastructure Map.mxd