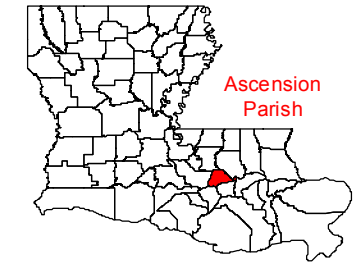
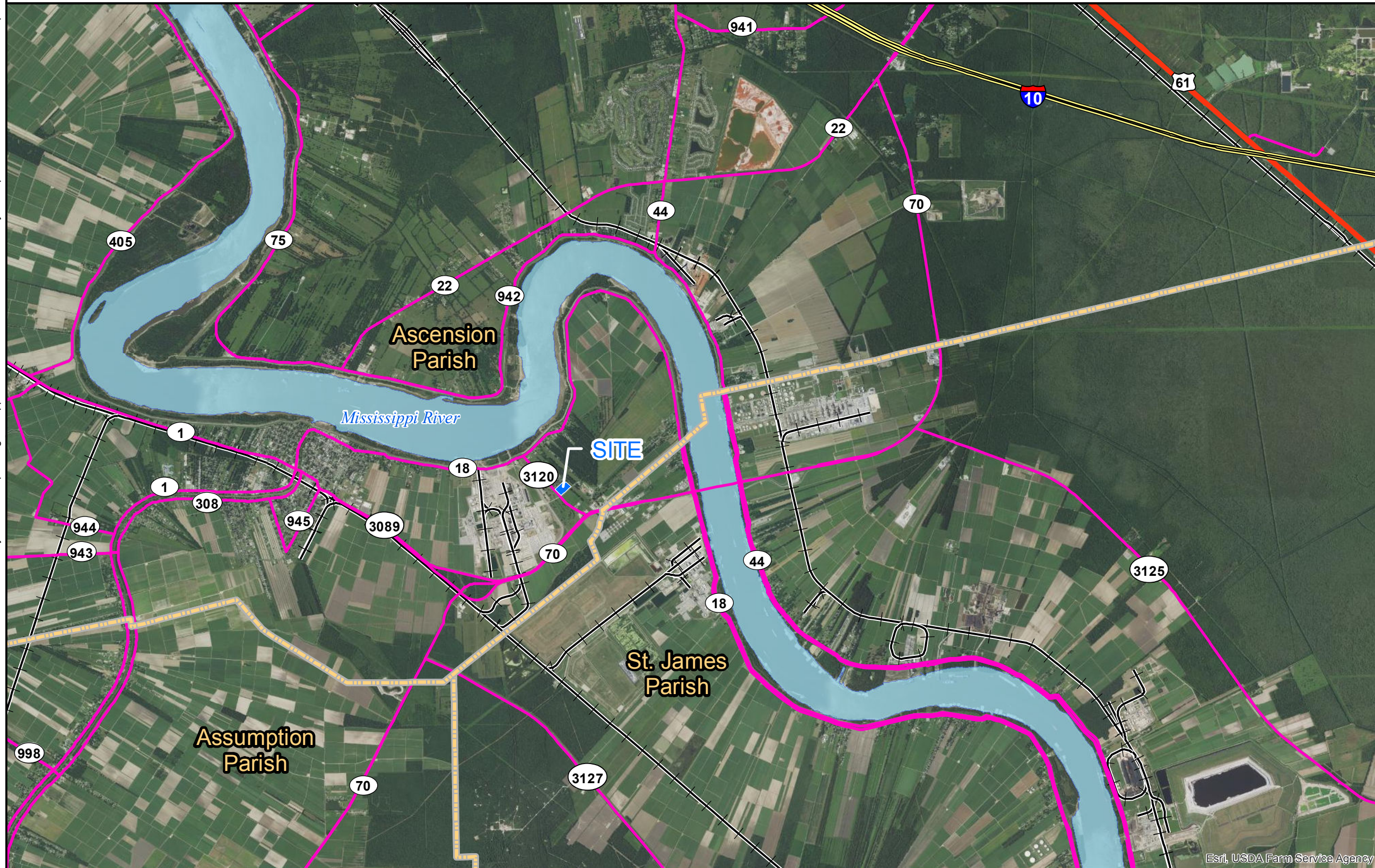


Exhibit N. Foti - Highway 3120 N Roadway Transportation
Infrastructure Wide Map



Foti - Highway 3120 N Roadway Transportation Infrastructure Wide Map

Document Path: R:\DWG\16-000\16-392\Foti Sites\Foti Site - Hwy 3120 N\Maps\Program Application Exhibits\Exhibit N - Roadway Transportation Infrastructure Wide Map.mxd



LEGEND

- Foti - Highway 3120 N (± 9.67 Ac.)
- Parish Boundary
- Existing Roadway**
- Interstate
- US Highway
- State Highway
- Railroad
- Mississippi River



SITE NAME: Foti - Highway 3120 N

Drawn By: CDS

Checked By: GJB

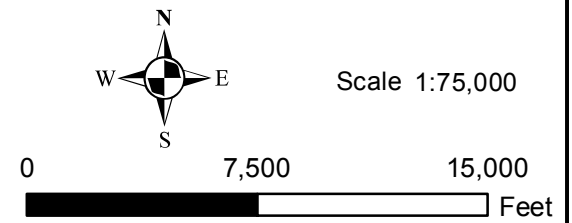
Date: 12/18/2017

General Notes:

1. The information presented herein was obtained from various resources and should be considered preliminary.
2. No attempt has been made by Duplantis Design Group, PC to verify site boundary, title, actual legal ownership, deed restrictions, servitudes, easements, or other burdens on the property.

References:

1. Aerial imagery USDA NAIP 2015
2. Site boundary from Harold J. Terracina, Inc.
3. Transportation data from U.S. Census Bureau



DDG
DUPLANTIS DESIGN GROUP

8352 Bluebonnet Blvd.
Baton Rouge, LA 70810
Phone: 225-751-4490
www.ddgpc.com

Esri, USDA Farm Service Agency