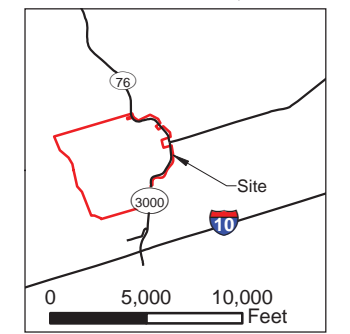
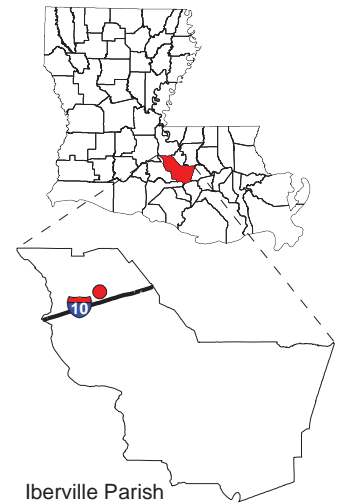


Exhibit Z. Grace Farms West All Utilities Infrastructure Site Map

Project:
 Grace Farms West
 Iberville Parish, LA

Client:
 BRAC



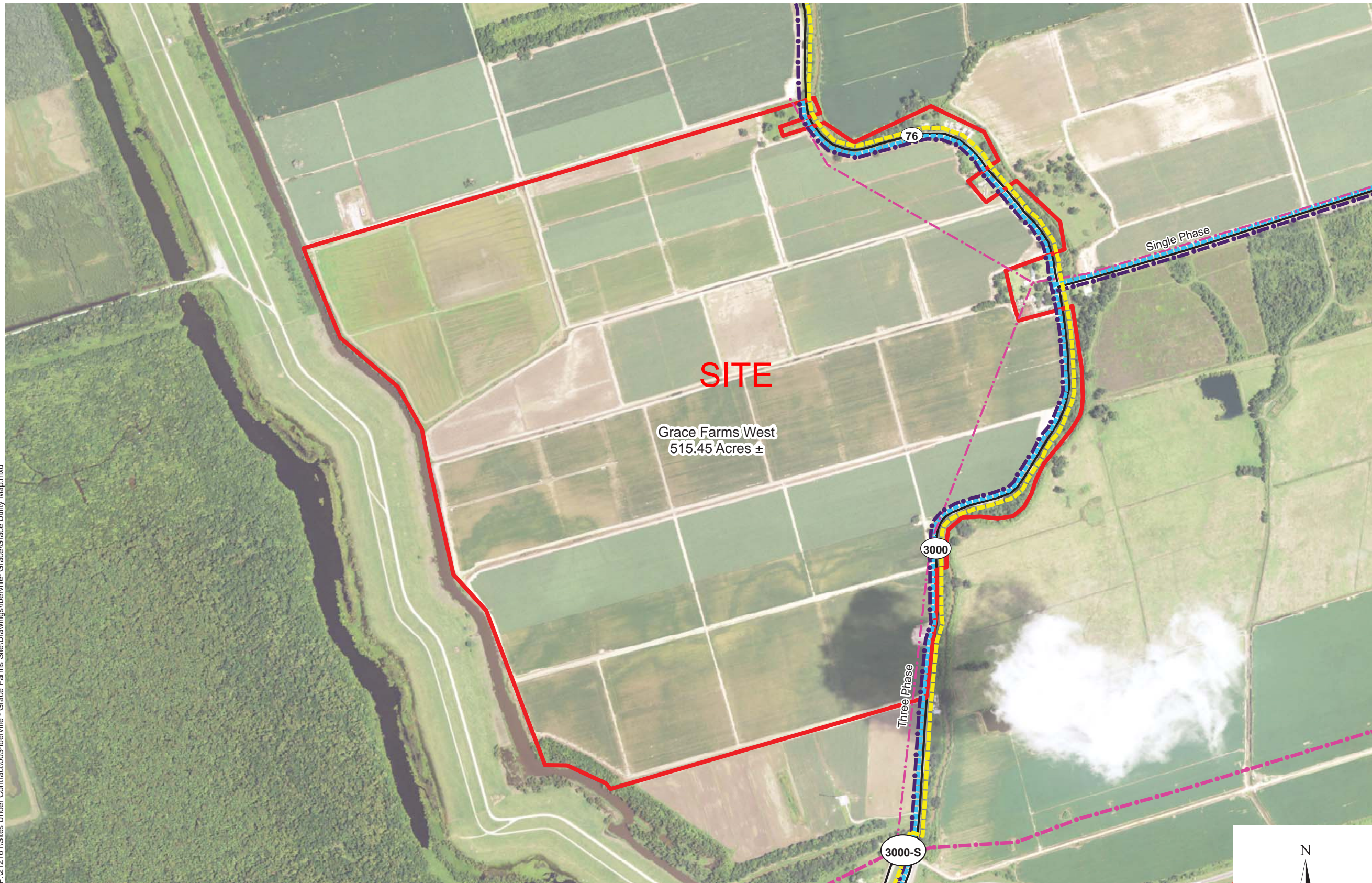
Legend:

- - - Powerline
- - - 3" Natural Gas
- - - Telecom
- - - 6" Water Line
- Site Boundary
- Interstate Highway
- State Roads



Source:
 GIS features acquired from public domain
 state and federal data sources
 (GNIS, LOSCO, US Census Bureau).
 Imagery: 2010 USDA NAIP

Date:	5/31/2013
Project Number:	212161.20.003
GIS Analyst:	JAY
Checked By:	TMG



P:\212161\Sites Under Contract\003-Iberville - Grace Farms Site\Drawings\Iberville - Grace\Grace Utility Map.mxd

GENERAL NOTES:

1. Water line is operated by Iberville Parish Utilities and is located on the west side of LA 3000 and the north side of LA 76 approximately 25' from the centerline of the road.
2. Telephone line is operated by Star Telephone Co. and is located on the west side of LA 3000 and the south side of LA 76 approximately 30' from the centerline of the road.
3. Gas line is operated by Iberville Parish Utilities.
4. Portions of power line are operated by Pointe Coupee Electric Membership Corporation and portions are operated by Entergy.
5. Exact field locations of utilities has not been determined. The lines shown are an approximate representation and are for general locative information only.

