

For Lease

Property Summary

Northlake Corporate Centre is nestled among magnificent live oak trees in Covington, La, just south of Interstate 12, and minutes from the Causeway Bridge. This building is currently undergoing extensive renovations in the lobby area to include new wall covering, flooring and light fixtures. The property has ample parking for tenants and visitors surrounding the perimeter just steps away from the two entrances. The 1,776 square foot suite is unique; located on the ground floor with magnificent views of the 100 year live oaks surrounding the property. This corner suite has walls of floor to ceiling windows allowing natural light into the office with the exceptional views of the outdoors. Currently there are two offices, kitchen and a large open area great for a collaborative work environment. If the interested user has need of additional offices the owners are willing to reconfigure the suite to meet the needs of the new Tenant.

Building Size

- 28,800 SF

Price

- \$25 per square foot

Available

- Suite 100 - 1,776 SF

Year Built

- 2008

Total Parking Spaces

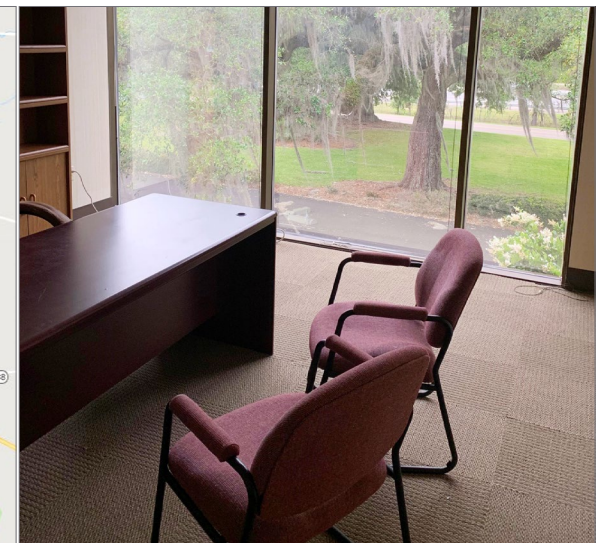
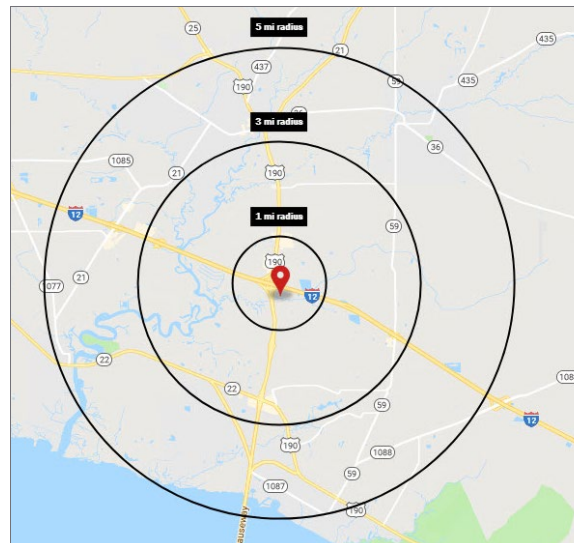
- 128

Lease Type

- Full service or gross

2019 Demographics

	1 mi.	3 mi.	5 mi.
Population	4,650	41,580	88,396
Avg. HH Income	\$125,136	\$104,930	\$100,344



Suite 100

