

Warehouse/Office for Lease on Cameron Street

5550 Cameron St, Scott, LA 70583

Listing ID: 30276218
Status: Active
Property Type: Industrial For Lease
Industrial Type: Industrial-Business Park, Mixed Use
Contiguous Space: 10,000 SF
Total Available: 10,000 SF
Lease Rate: \$4.50 PSF (Annual)
Base Monthly Rent: \$3,750
Lease Type: NNN



Overview/Comments

Excellent warehouse/office space for Lease on Cameron Street. Property is minutes away from I-10. Features load-out docks. Owner is willing to work with Tenant if additional amenities are needed. Up to 46,500 SF of contiguous space.

Current electric bill is 750 +/- per month.

NNN Expenses:

Taxes \$18,000

Insurance \$9,000

General Information

Taxing Authority:	Lafayette Parish	Industrial Type:	Industrial-Business Park, Mixed Use, Light Industrial, Office Showroom, Warehouse/ Distribution
Tax ID/APN:	6063820	Zoning:	COMMERCIAL

Available Space

Suite/Unit Number:	A-3	Date Available:	05/09/2018
Space Available:	10,000 SF	Lease Term (Months):	36 Months
Minimum Divisible:	10,000 SF	Lease Rate:	\$4.50 PSF (Annual)
Maximum Contiguous:	10,000 SF	Lease Type:	NNN
Space Type:	New	Real Estate Taxes:	\$5,000 PSF (Annual)

Building Related

Tenancy:	Multiple Tenants	Sprinklers:	Wet
Total Number of Buildings:	1	Heat Type:	Electricity
Property Condition:	Average	Heat Source:	Central
Parking Description:	75-100 spaces available depending on truck flow.	Air Conditioning:	Package Unit
Total Parking Spaces:	100	Lighting:	Fluorescent
Passenger Elevators:	0	Interior Description:	Truck Court Depth +/- 160'
Freight Elevators:	0		

Land Related

Water Service:	Municipal
Sewer Type:	Municipal

Location

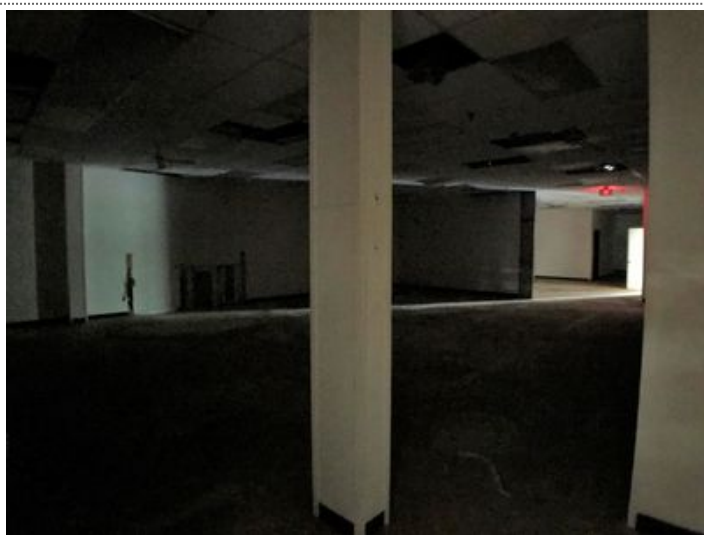
Address:	5550 Cameron St, Scott, LA 70583	MSA:	Lafayette
County:	Lafayette	Submarket:	C



Property Images



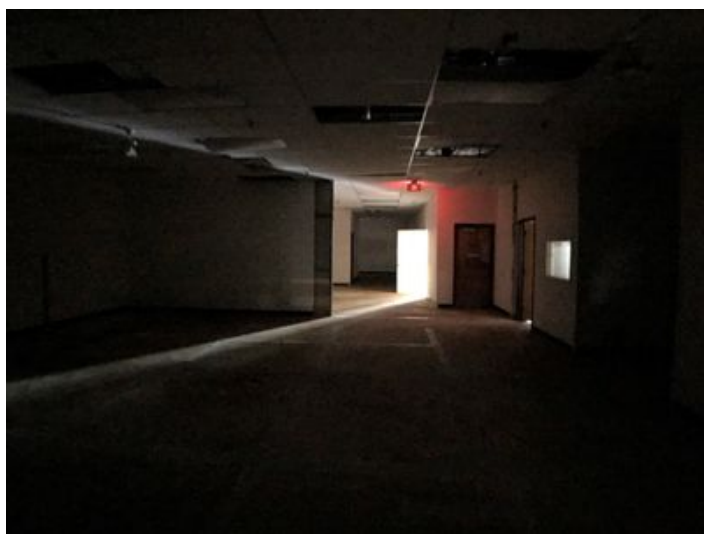
IMG_3582



IMG_3588



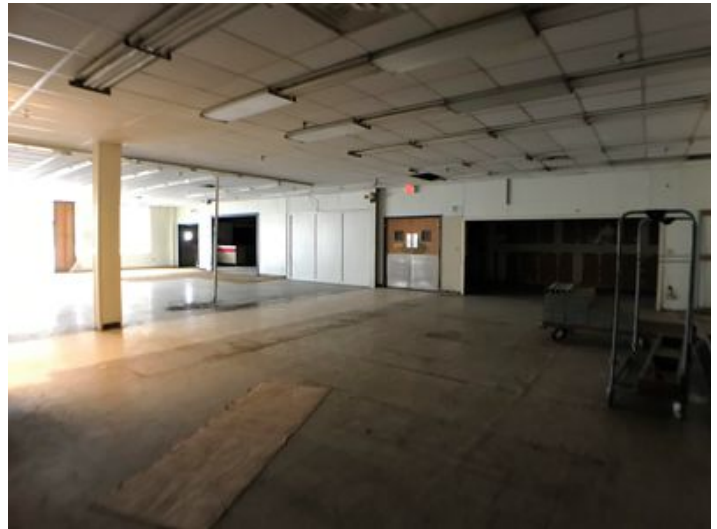
IMG_3585



IMG_3589



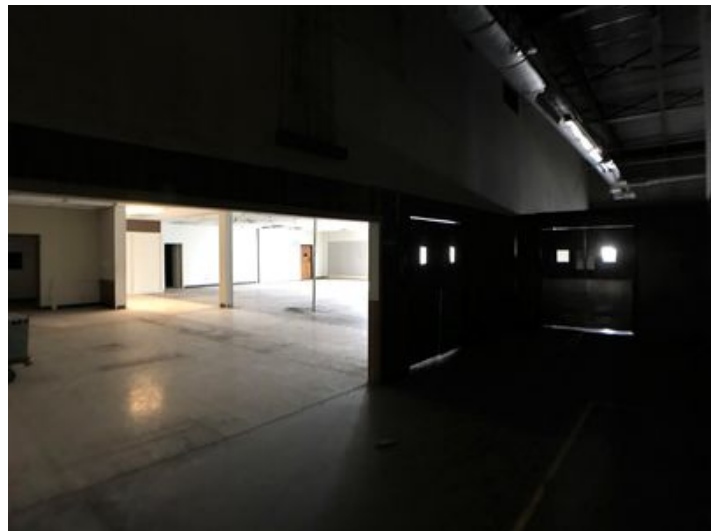
IMG_3590



IMG_3596



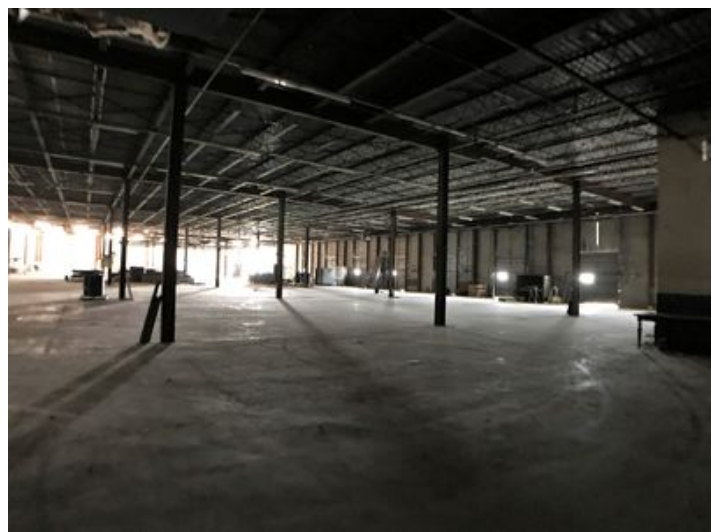
IMG_3591



IMG_3597



IMG_3594



IMG_3598



IMG_3599



IMG_3602

Property Contacts



Bart Broussard

NAI/Latter & Blum Commercial Lafayette
337-380-9511 [M]
337-233-9540 [O]
bart@gleasonla.com



David A Gleason

NAI/Latter & Blum Commercial Lafayette
337-288-9400 [M]
337-233-9540 [O]
david@gleasonla.com