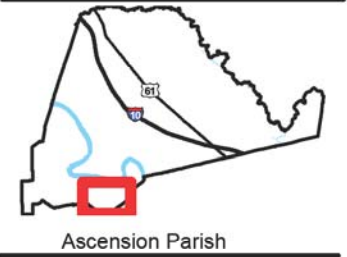
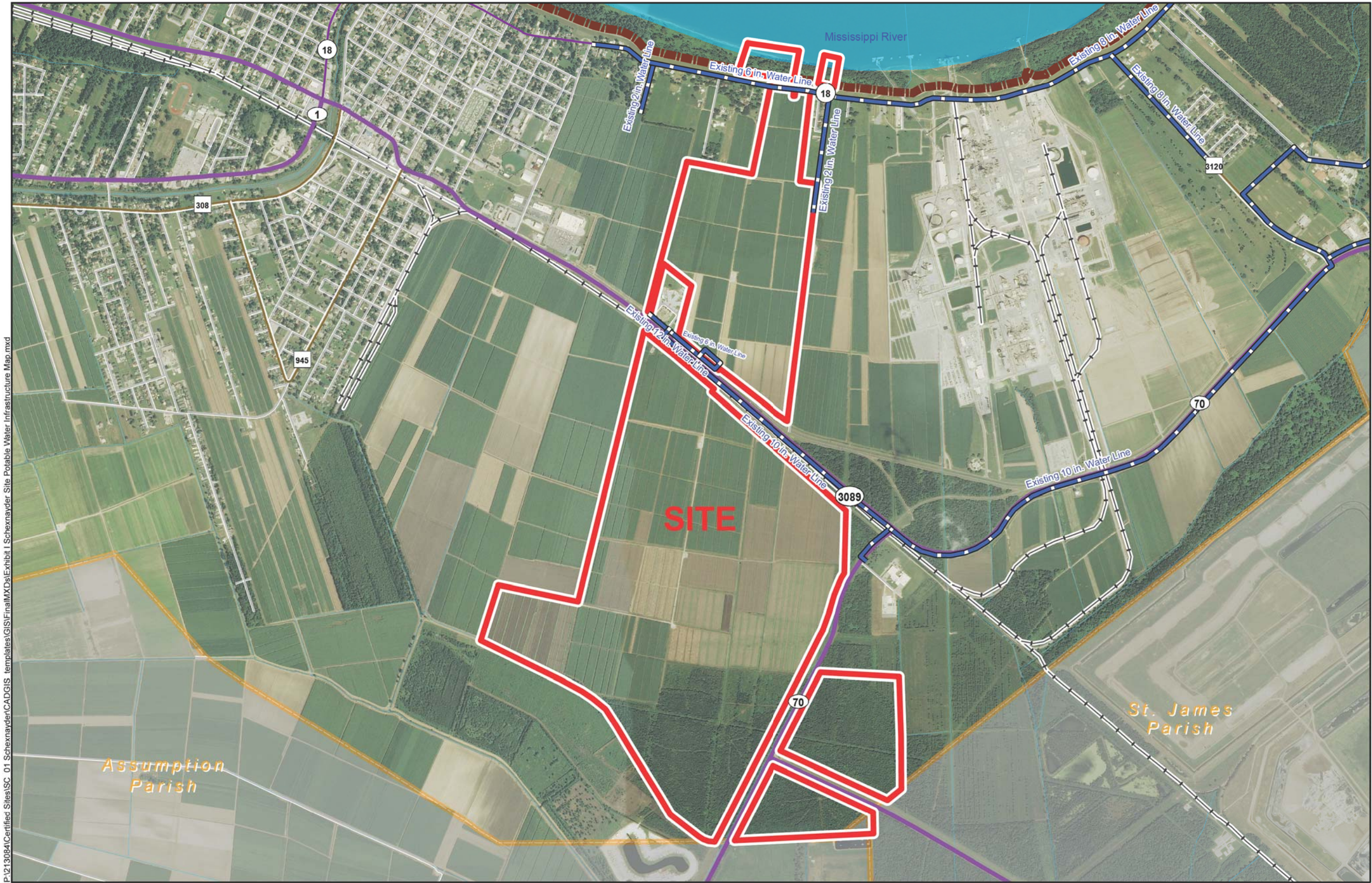


Exhibit I. Schexnayder Site Potable Water Infrastructure Map

Existing Potable Water
Schexnayder Site
Ascension Parish, LA



LEGEND

- Site Boundary (1,000 Acres +/-)
- Distribution Line
- Water
- Existing Roadway
- 4-Lane State Highway
- Urban State Highway
- Rural State Highway
- Local Roads
- Railroad
- Levee
- Stream
- Waterbody
- Parish Boundary

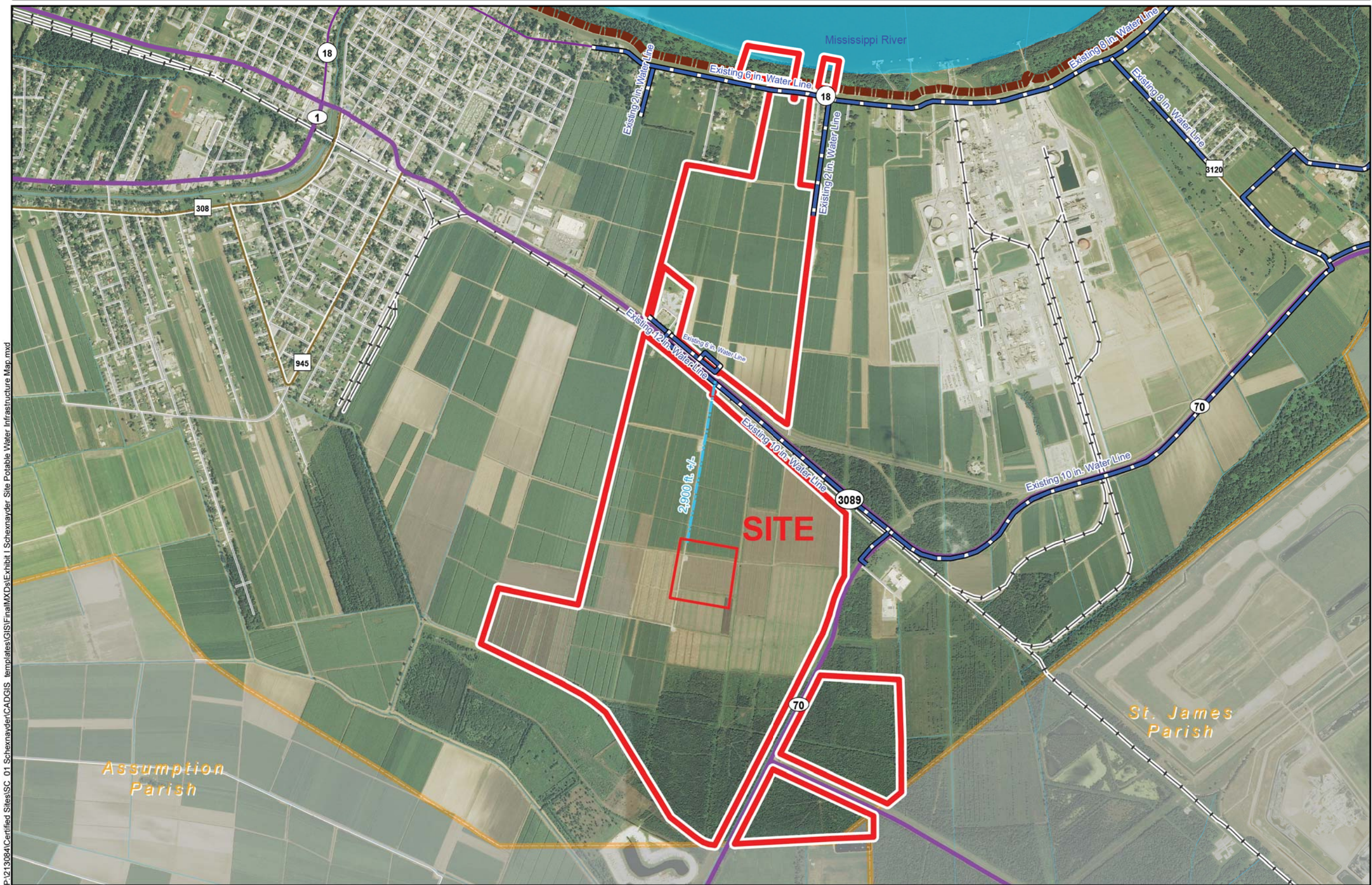


Date: 8/21/2014
Project Number: 213084.20.002
Drawn By: MMS
Checked By: TMG



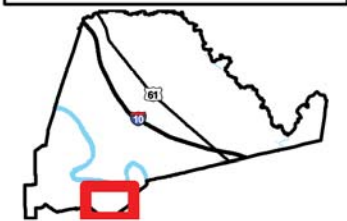
General Notes:
1. No attempt has been made by CSRS, Inc. to verify site boundary, title, actual legal ownership, deed restrictions, servitudes, easements, or other burdens on the property, other than that furnished by the client or his representative.
2. Transportation data from 2013 TIGER datasets via U.S. Census Bureau at ftp2.census.gov/geo/tiger/TIGER2013.
3. Utility information from visual inspection and Ascension Parish Public Utilities Department. Exact field location has not been determined by survey. The lines shown are an approximate representation only and may have been offset for depiction purposes.
4. 2013 aerial imagery from USDA-APFO National Agricultural Inventory Project (NAIP) and may not reflect current ground conditions.

Exhibit I. Schexnayder Site Potable Water Infrastructure Map



Proposed Potable Water
Infrastructure
Schexnayder Site
Ascension Parish, LA

AEDC



Ascension Parish

LEGEND

- Site Boundary (1,000 Acres +/-)
- Sample 25-Acre Site Pad
- Distribution Line
 - Water
 - Proposed Water
- Existing Roadway
 - 4-Lane State Highway
 - Urban State Highway
 - Rural State Highway
 - Local Roads
- Railroad
- Levee
- Stream
- Waterbody
- Parish Boundary



Date: 1/27/2015
Project Number: 213084.20.002
Drawn By: MMS
Checked By: TMG

General Notes:
1. No attempt has been made by CSRS, Inc. to verify site boundary, title, actual legal ownership, deed restrictions, servitudes, easements, or other burdens on the property, other than that furnished by the client or his representative.
2. Transportation data from 2013 TIGER datasets via U.S. Census Bureau at <ftp://ftp2.census.gov/geo/tiger/TIGER2013>.
3. Utility information from visual inspection and Ascension Parish Public Utilities Department. Exact field location has not been determined by survey. The lines shown are an approximate representation only and may have been offset for depiction purposes.
4. Proposed potable water upgrade shown is for representational purposes only and is subject to revision.
5. 2013 aerial imagery from USDA-APFO National Agricultural Inventory Project (NAIP) and may not reflect current ground conditions.

