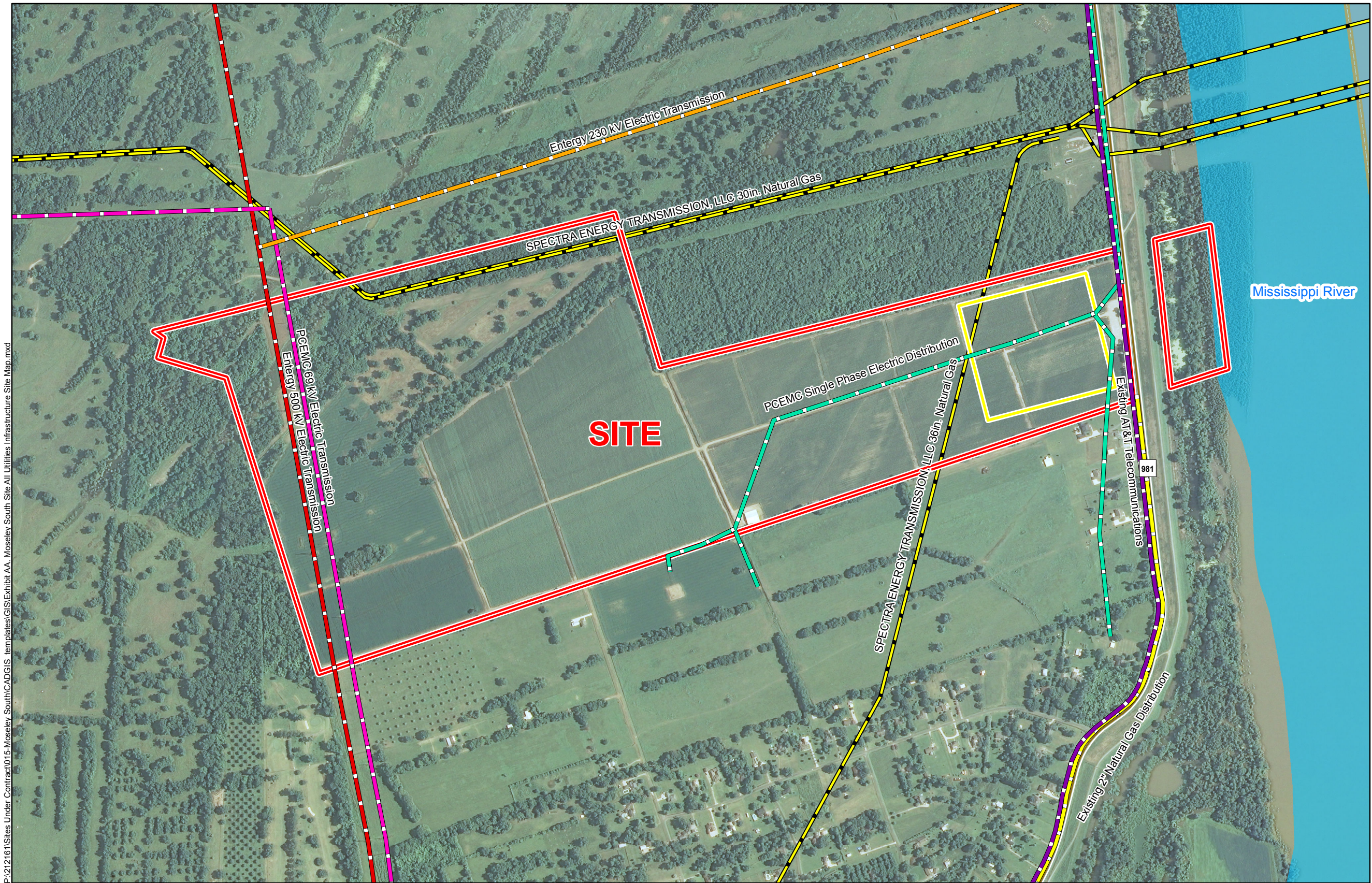
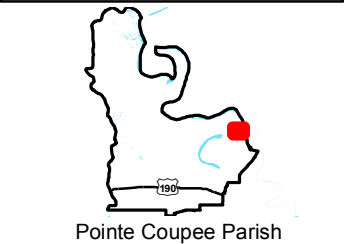
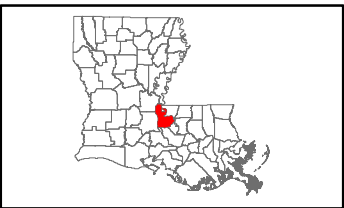


Exhibit AA. Moseley South Site All Utilities Infrastructure Site Map



All Existing Utilities
Moseley South Site
Pointe Coupee Parish, LA

BRAC



LEGEND

- Site Boundary (379.74 Acres +/-)
- Sample 25-Acre Site Pad
- Existing Telecommunications
- Existing 2" Natural Gas Distribution Line
- Existing Electric Transmission**
 - Entergy: 230 kV
 - Entergy: 500 kV
 - PCEMC: 69 kV
- Existing Electric Distribution**
 - PCEMC, Single Phase
- Pipeline Commodity**
 - Natural Gas
- Existing Roadway**
 - Rural State Highway
- Waterbody
- Parish Boundary

General Notes:
1. No attempt has been made by CSRS, Inc. to verify site boundary, title, actual legal ownership, deed restrictions, servitudes, easements, or other burdens on the property, other than that furnished by the client or his representative.
2. Transportation data from 2013 TIGER datasets via U.S. Census Bureau at <ftp://ftp2.census.gov/geo/tiger/TIGER2013>.
3. Utility information from visual inspection and/or the individual utility operators. Exact field location has not been determined by survey. The lines shown are an approximate representation only and may have been offset for depiction purposes.
4. 2013 aerial imagery from USDA-APFO National Agricultural Inventory Project (NAIP) and may not reflect current ground conditions.



Scale 1:10,000
0 530 1,060 Feet



Project Number: 212161.20.015
Drawn By: MAT
Checked By: TMG

CSRS
IMAGINE SHAPE DELIVER
6767 Perkins Road Suite 200 Baton Rouge, LA 70808
Telephone: 225 769-0546 Fax: 225 767-0060
www.csrsonline.com