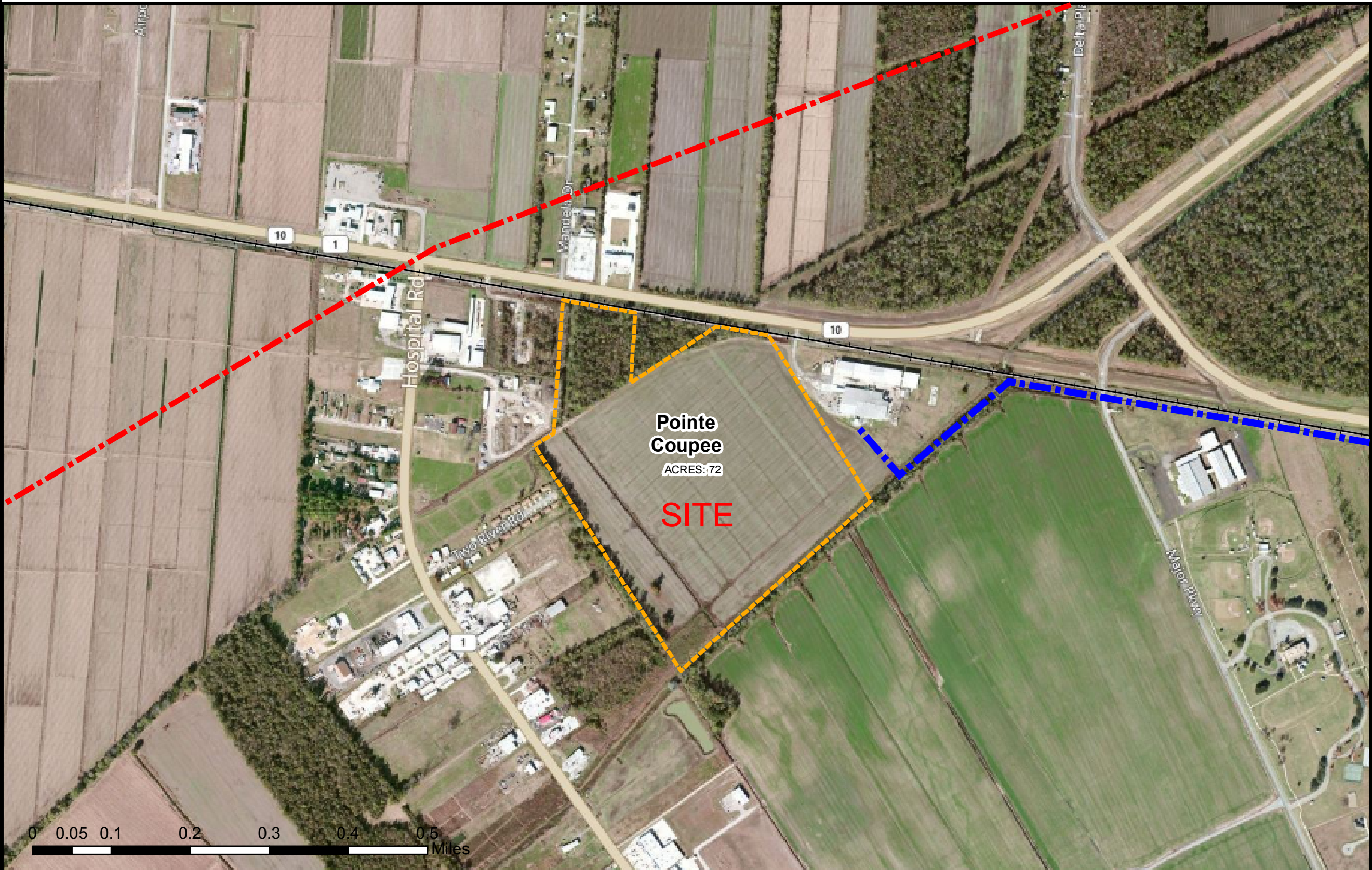


Exhibit M. New Roads Industrial Park Natural Gas Infrastructure Map



- Legend**
- Poydras Site
 - 2 Inch 160 PSINatural Gas Pipeline
 - Railroad
 - School
 - Two 30 Inch Natural Gas Transmission Pipelines
 - Church
 - Parish Boundary

CONFIDENTIAL

Source
Parcel data supplied by Pointe Coupee Assessor.
Parcel acreage values approximated.
GIS features acquired from public domain state and federal data sources (GNIS, LOSCO, US Census Bureau).

Title
**POINTE COUPEE PARISH
NEW ROADS
INDUSTRIAL PARK**

Project

GIS Analyst	WBM	Date	9/13/12
-------------	------------	------	----------------

LEO Project No.	Map No.	Version
12-003		001

LEO, LLC
17170 Perkins Road
Baton Rouge, Louisiana 70810
(225) 281-4202



SITE VICINITY

**SITE PROFILE: New Roads Industrial Park
Acres: 72**