

# Exhibit M. West Feliciana Industrial Park Site Electrical Transmission Map

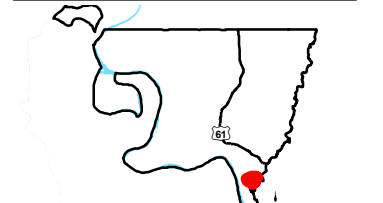




# West Feliciana Industrial Park Electrical Transmission Infrastructure Map

West Feliciana Industrial  
Park Site  
West Feliciana Parish, LA

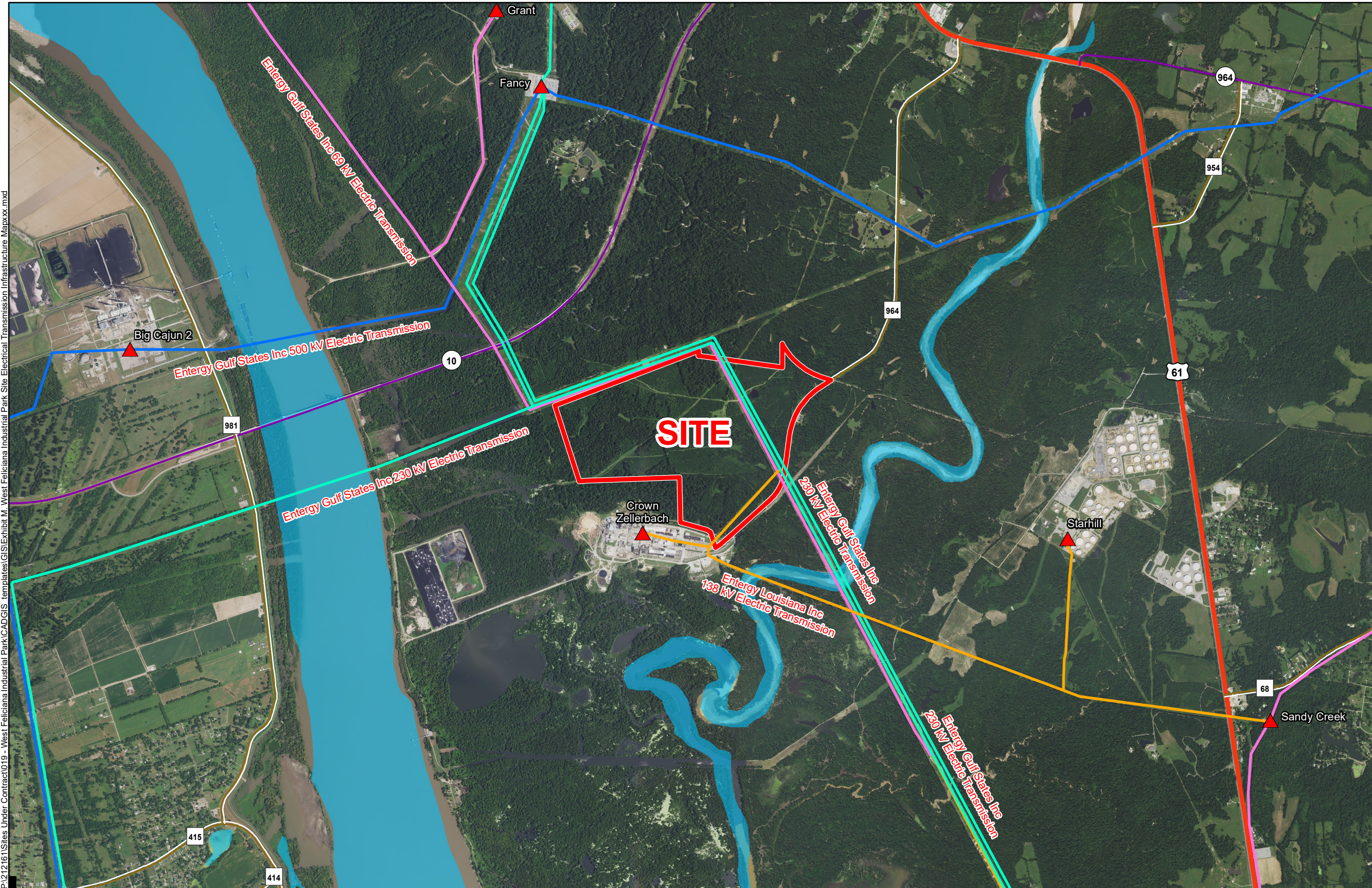
BRAC



West Feliciana Parish

LEGEND

- Site Boundary (547.31 Ac.)
- ▲ Substation
- Electric Transmission**
- 500 kV
- 230 kV
- 138 kV
- 69 kV
- Existing Roadway**
- US Highway
- Urban State Highway
- Rural State Highway
- Waterbody



P:\212161\Sites Under Contract\019 - West Feliciana Industrial Park\CAD\GIS templates\GIS\Exhibit M - West Feliciana Industrial Park Site Electrical Transmission Infrastructure Mapxxx.mxd

- General Notes:
1. No attempt has been made by CSRS, Inc. to verify site boundary, title, actual legal ownership, deed restrictions, servitudes, easements, or other burdens on the property, other than that furnished by the client or his representative.
  2. Transportation data from 2013 TIGER datasets via U.S. Census Bureau at <ftp://ftp2.census.gov/geo/tiger/TIGER2013>.
  3. Utility information from visual inspection and/or the individual utility operators. Exact field location has not been determined by survey. The lines shown are an approximate representation only and may have been offset for depiction purposes.



Scale 1:34,000  
0 1,800 3,600 Feet



Date:	5/16/2017
Project Number:	212161
Drawn By:	TMK
Checked By:	JAY

**CSRS**  
IMAGINE SHAPE DELIVER  
6767 Perkins Road Suite 200 Baton Rouge, LA 70808  
Telephone: 225 769-0546 Fax: 225 767-0060  
[www.csrsonline.com](http://www.csrsonline.com)