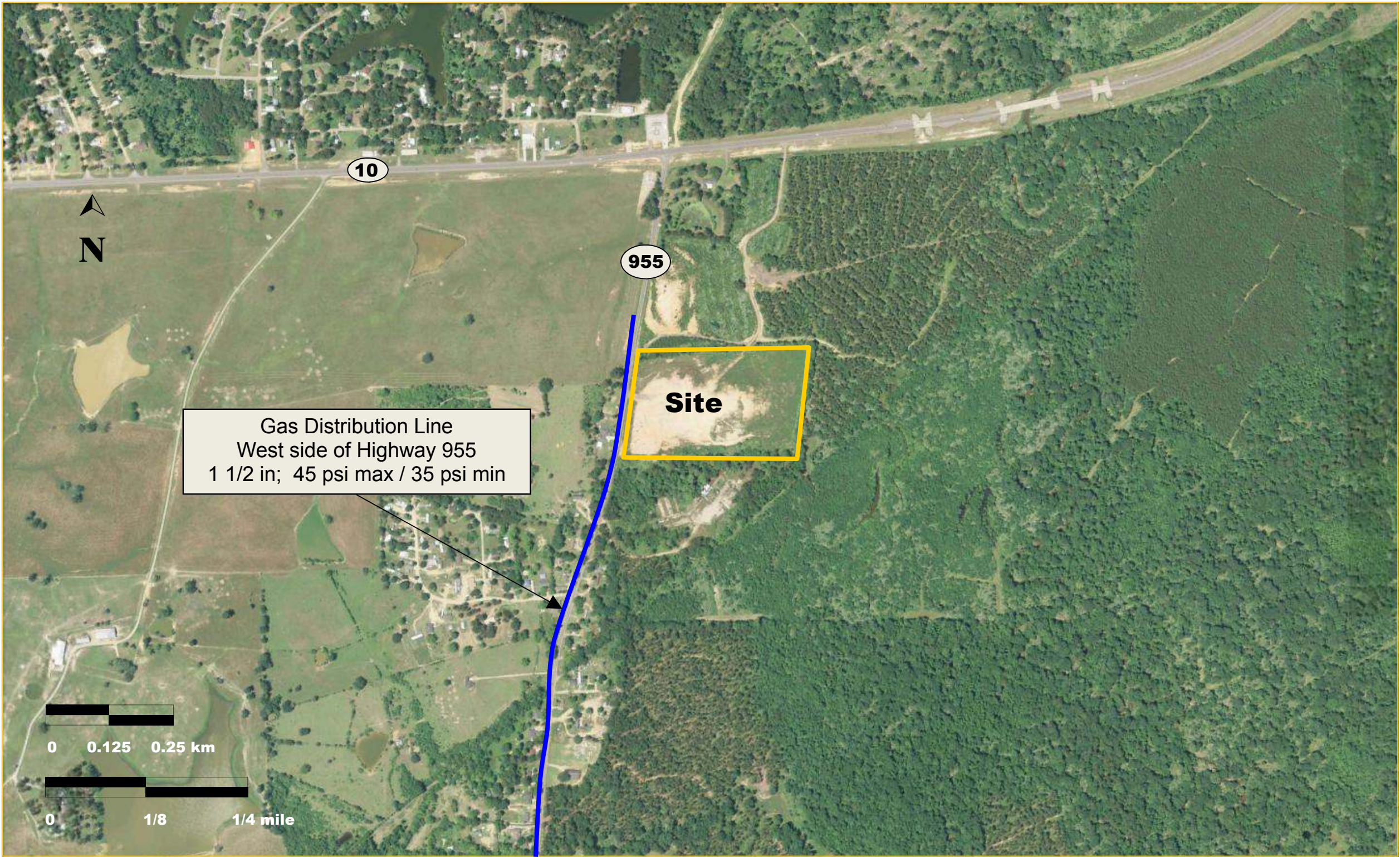
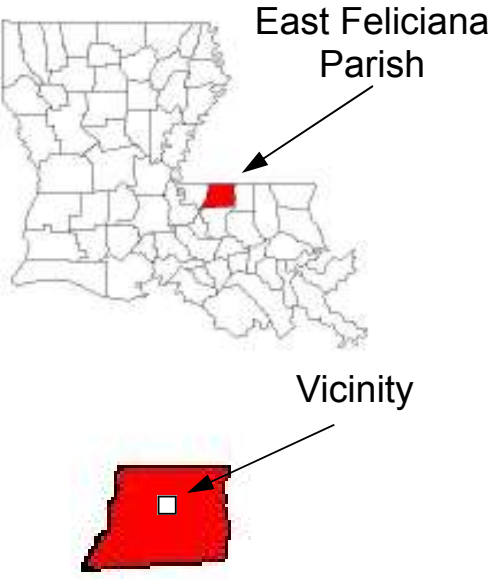


Exhibit I. Record Industrial Park Natural Gas Infrastructure Map



Site Location



Legend

- Site Boundary
- Natural Gas Distribution Line

This map should not be used as a substitute for contacting a one-call center prior to excavation. Please call Louisiana One-Call at 811 before digging.

Date Prepared: Oct 5, 2012
Preparer: GAD

Sources: Base photo - USDA Farm Service Agency, 12/21/2009, via Google Earth
E. Feliciana Gas Utility District #2

Notes: This document is for illustration purposes only.
Site boundaries and locations of features described in legend are approximate.
This document compiled with data available on preparation date.

louisiana business & technology center
8000 gesi avenue
bldg 3000
baton rouge, la 70820

Compiled for
Baton Rouge Area Chamber.
Leading Economic Development in the Baton Rouge Area

Record Industrial Park
Natural Gas Distribution Line
GESI Project No. 12513.01

Exhibit I. Record Industrial Park Natural Gas Infrastructure Map

East Feliciana Parish



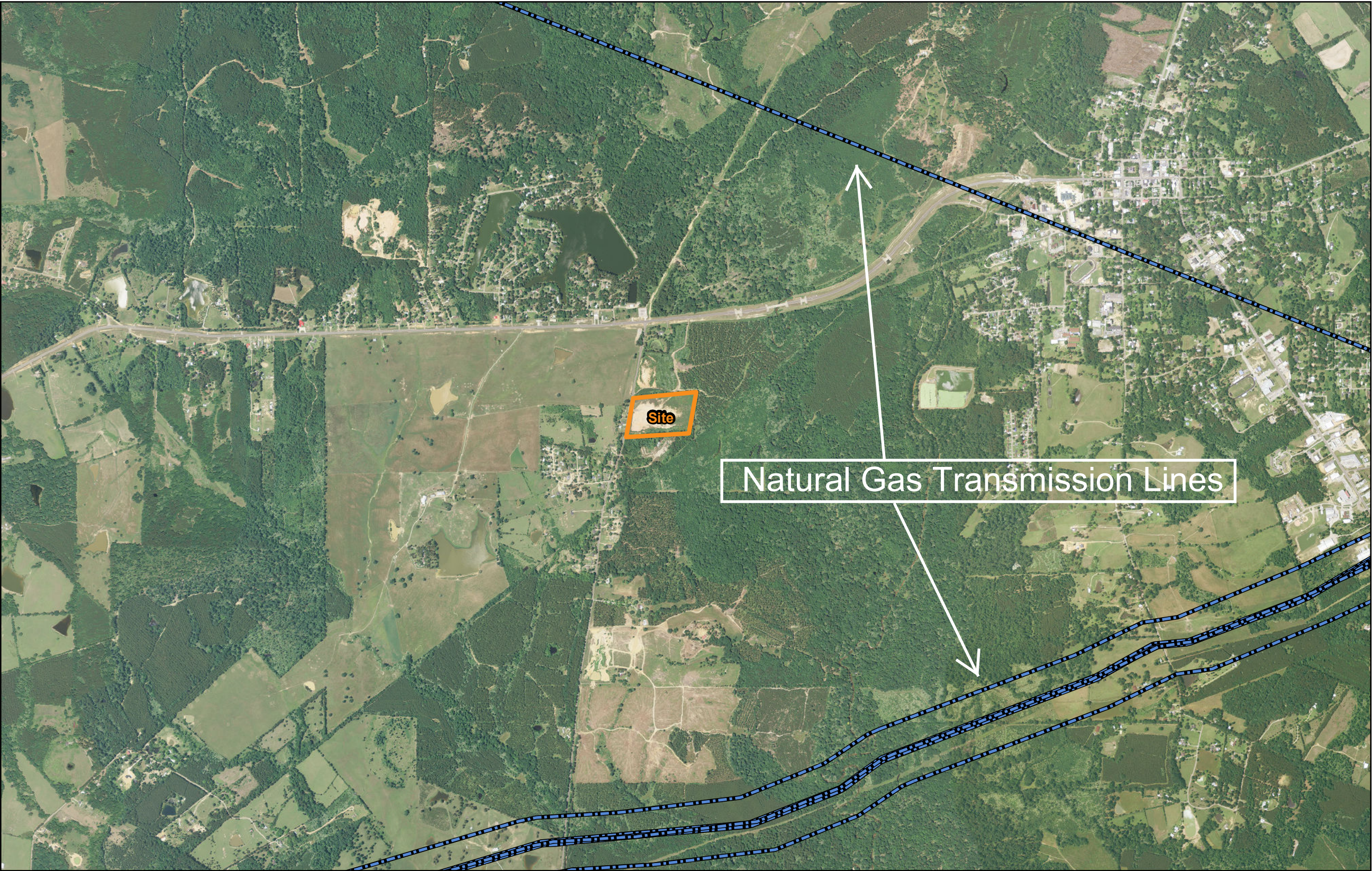
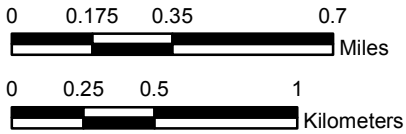
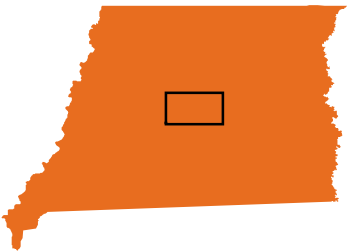
Legend

PROPERTY BOUNDARY

Pipelines

NATURAL GAS
TRANSMISSION LINES

VICINITY



Natural Gas Transmission Lines

Source:
--Aerial: USDA, National Agricultural Imagery Program (NAIP), 2010
--Pipeline: HTSI, 2011

Note:
--Site boundary is approximate
--Pipelines are approximate
--For illustrations purposes only

GIS Analyst: PCW
Date: 11/2012



1 in = 0.42 miles
1:26,515

