

# AIRPORT PARK

FLOWOOD AND PEARL, RANKIN COUNTY, MS

**FOR SALE: +/- 196 ACRES (DIVISIBLE)**



- + **LOCATION:** Airport Park is located adjacent to the Jackson-Medgar Evers International Airport and offers frontage and access along Airport Road, Old Brandon Road, N Fox Hall Road, and the proposed Airport Parkway.
- + **ZONING:** Encompasses a wide variety of uses, including, lodging, entertainment, retail, office, light industrial, and distribution.  
I-1; Light Commercial (Flowood)  
C-2; General Commercial (Pearl)
- + **AIRPORT PARKWAY:** Proposed development that would create non-stop direct access between Downtown and the Airport.
- + **Outstanding Labor and Transportation Infrastructure**

**PHILLIP CARPENTER**  
President  
601-957-1001  
phillip@carpenterproperties.com

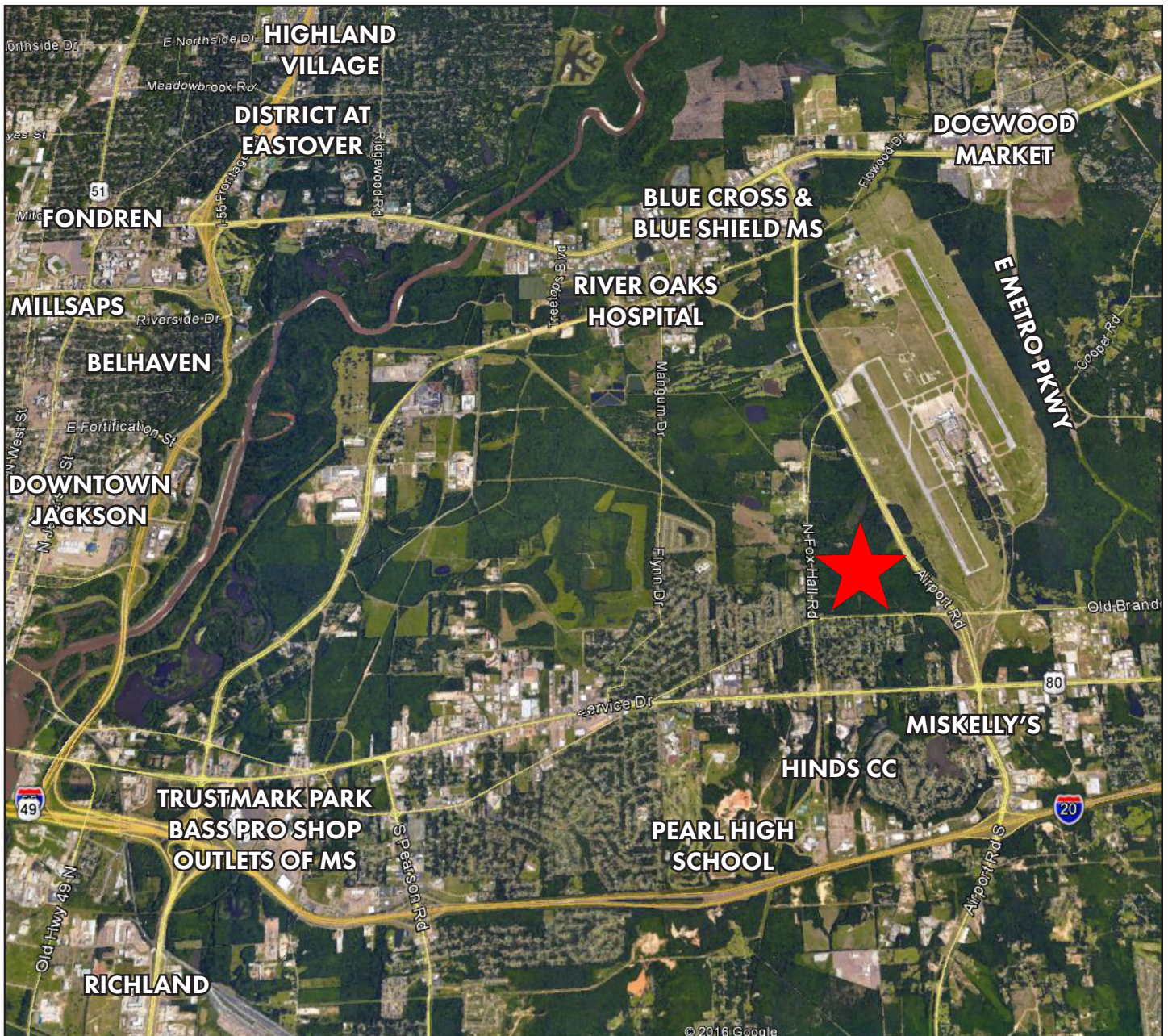
**ROB CARPENTER**  
Director of Sales & Leasing  
601-957-1001  
rob@carpenterproperties.com



# AIRPORT PARK

FLOWOOD AND PEARL, RANKIN COUNTY, MS

**FOR SALE: +/- 196 ACRES (DIVISIBLE)**



**PHILLIP CARPENTER**  
President  
601-957-1001  
phillip@carpenterproperties.com

**ROB CARPENTER**  
Director of Sales & Leasing  
601-957-1001  
rob@carpenterproperties.com

