

Exhibit R.

Benoit LA-26 Site

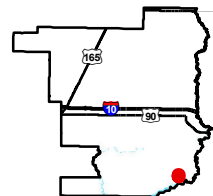
Telecommunications Infrastructure Map



Benoit LA-26 Site Telecommunications Infrastructure Map

Benoit LA-26 Site
Jefferson Davis Parish, LA

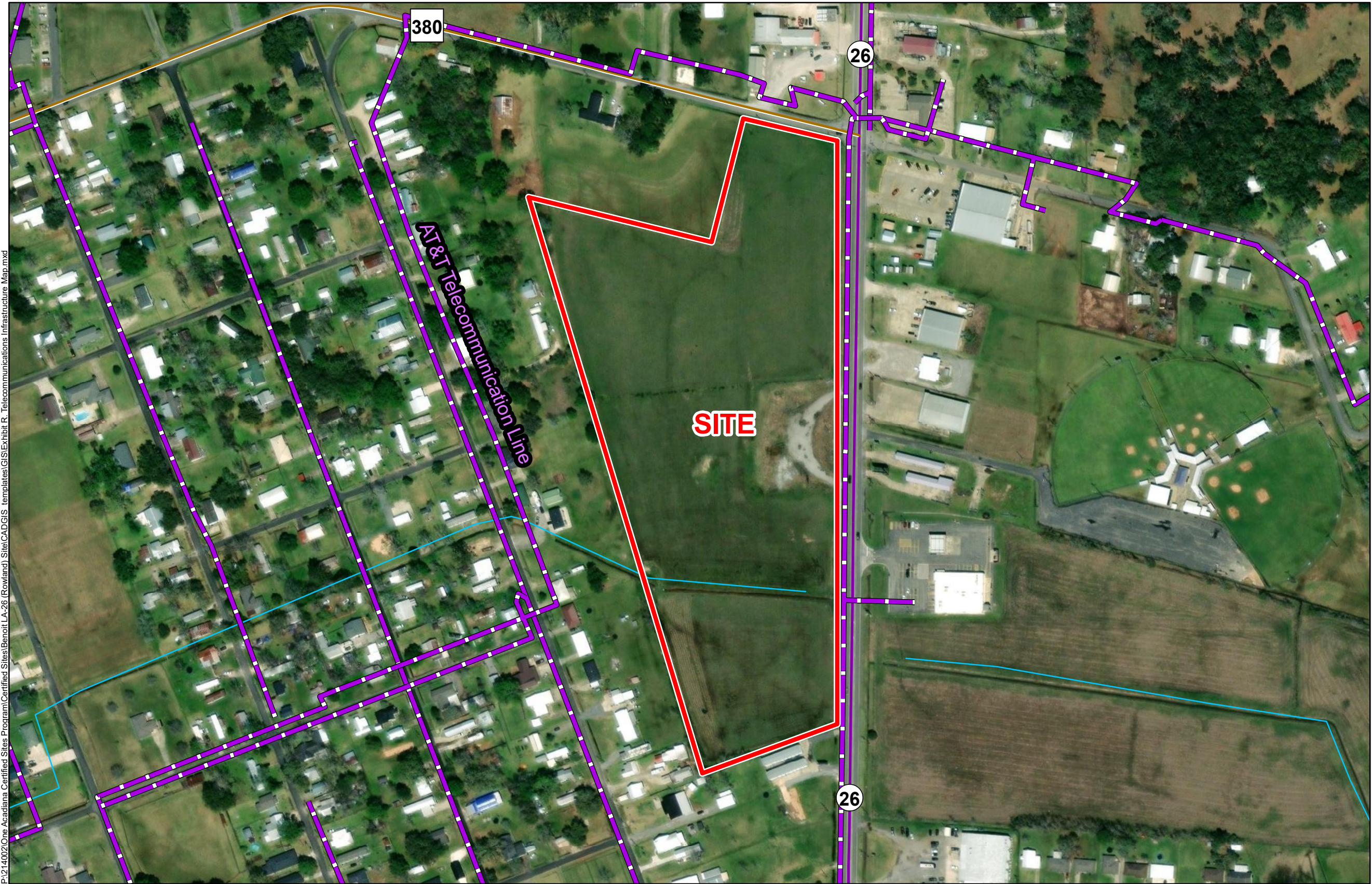
One Acadiana



Jefferson Davis Parish

LEGEND

- Site Boundary (18.37± ac.)
- AT&T Telecommunication Utility Infrastructure
- Stream
- Existing Roadway
 - Urban State Highway
 - Rural State Highway



- General Notes:
- No attempt has been made by CSRS, Inc. to verify site boundary, title, actual legal ownership, deed restrictions, servitudes, easements, or other burdens on the property, other than that furnished by the client or his representative.
 - Transportation data from 2013 TIGER datasets via U.S. Census Bureau at <ftp://ftp2.census.gov/geo/tiger/TIGER2013>.
 - Utility information from visual inspection and/or the individual utility operators. Exact field location has not been determined by survey. The lines shown are an approximate representation only and may have been offset for depiction purposes.
 - 2015 aerial imagery from USDA-APFO National Agricultural Inventory Project (NAIP) and may not reflect current ground conditions.
 - Telecommunication utility data was derived and digitized from AT&T.



Scale 1:3,000
0 160 320 Feet



Date: 8/10/2023
Project Number: 214002
Drawn By: BMS
Checked By: EEB

CSRS