

Exhibit G - Potable Water Service
Map & Letter

October 22, 2015

Mr. Larry Henson
Louisiana Economic Development (LED)
1051 North Third St.
Baton Rouge, LA 70802-5239

Mr. David Conner
Southwest Economic Development Alliance (SWLA)
P.O. Box 3110
Lake Charles, LA 70602

RE: H.C. Drew Property (+/- 183 Acres)
Potable Water Supply

Dear Gentlemen:

SJB Group, LLC (SJB) has been authorized by Louisiana Economic Development (LED and Southwest Louisiana Economic Alliance (SWLA) to perform due diligence investigations to determine the existence of fatal flaws, if any, that would inhibit the development of H.C. Drew Property (1,000 Acres) – Development Area (+/- 183 Acres), located west of the City of Sulphur, in Calcasieu Parish, Louisiana.

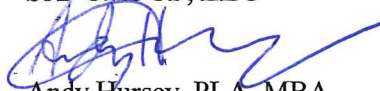
The attached exhibit illustrates the approximate location of an 8-inch water main that is currently operated and maintained by Houston River Waterworks District 11 (Louisiana Public Water System ID: 109119). Houston River Waterworks District 11 has indicated that up to 0.7 MGD of potable water can be provided to the site, with a static pressure of approximately 55 psi. The estimated cost of connection would be \$15,440 for each development area, based on installing 386 feet of water piping between the boundary of each development area and the water main.

Additionally, this site is within 3.5 miles of the Sabine River Diversion Canal (SRD). The SRD is has approximately 4 million acre feet of capacity of “good quality,” untreated river water at a rate of 23 cents per 1,000 gallons. According to the SRD, existing industrial facilities in the City of Lake Charles used 60,000 acre feet of makeup/cooling water from the SRD in the year 2014.

Please feel free to contact me at (225) 769-3400, at any time, should you have any questions or need further information.

Sincerely,

SJB GROUP, LLC


Andy Hursey, PLA, MBA
Landscape Architect

Enclosure: Potable Water Service Map

Parks & Planning

Transportation

Site Development

Utility Systems

Land Surveying

Construction Services

Environmental Services

Real Estate Services

P. O. Box 1751

Baton Rouge, Louisiana

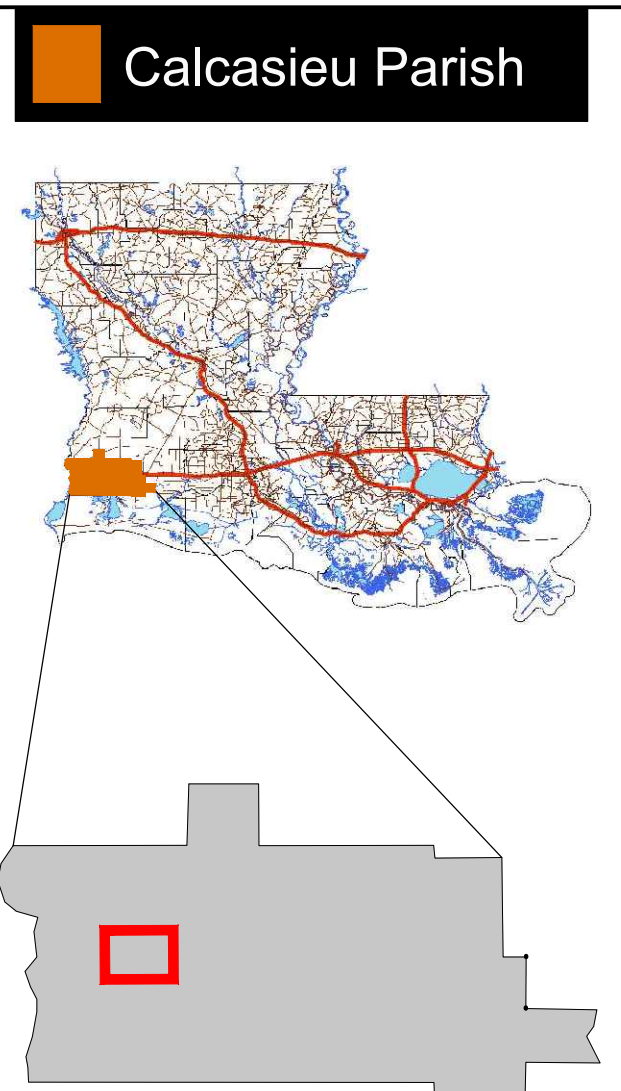
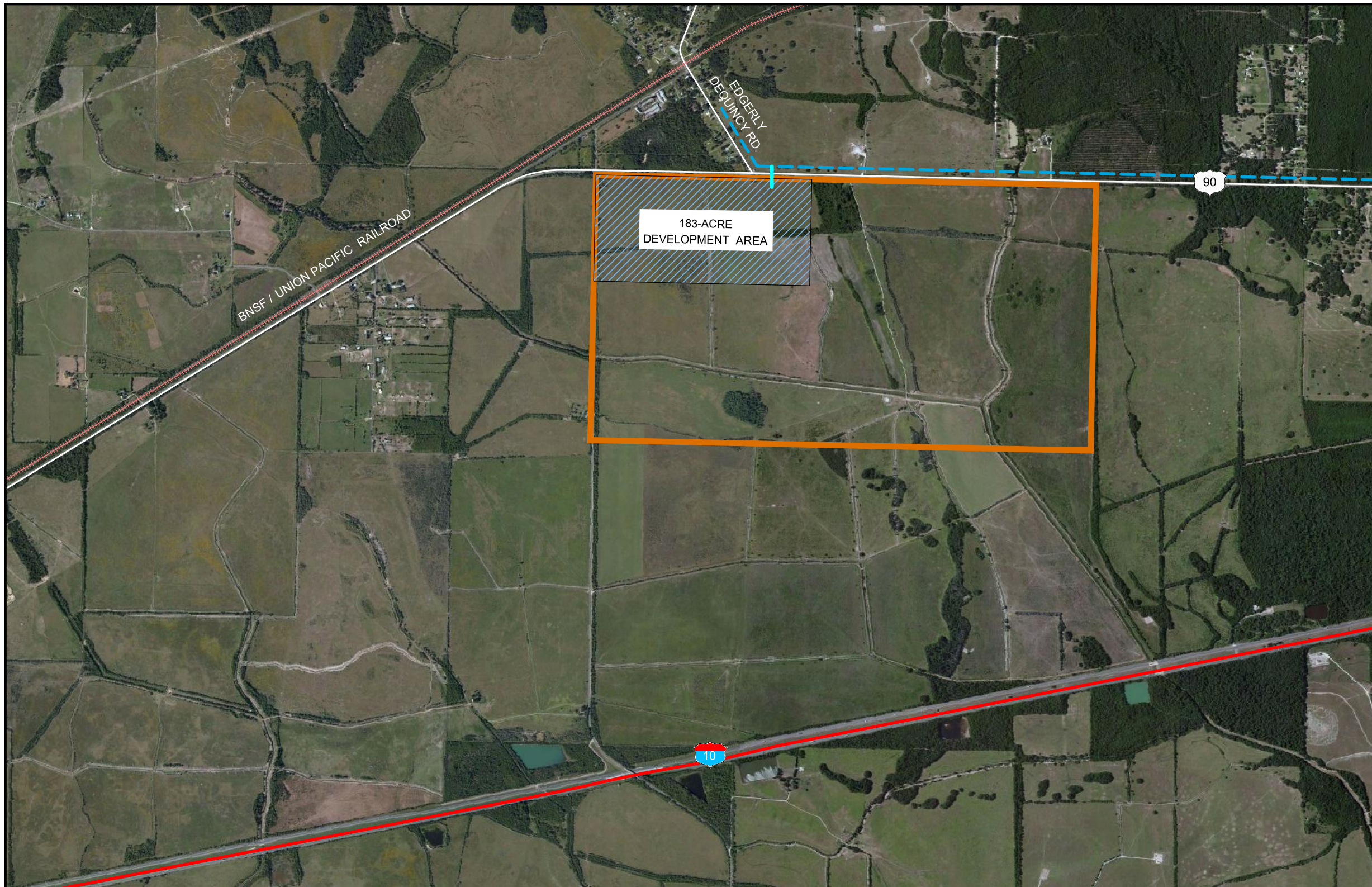
70821-1751

(225) 769-3400

Fax (225) 769-3596



www.sjbgroup.com



Exhibit G - Potable Water Service Map



Calcasieu Parish

Available Site Data

-  H.C. Drew Property (1,000 Acres)
-  Development Area (183 Acres)

-  8" Houston River Water Line
-  Proposed 8" Water Main Extension; 386' ± Development Area

Source:
 - Aerial Photo: 2014 Google Earth
 - Site Boundaries are Approximate
 - 12/10/2014



GRAPHIC SCALE

(IN FEET)
 1 INCH = 2000ft.