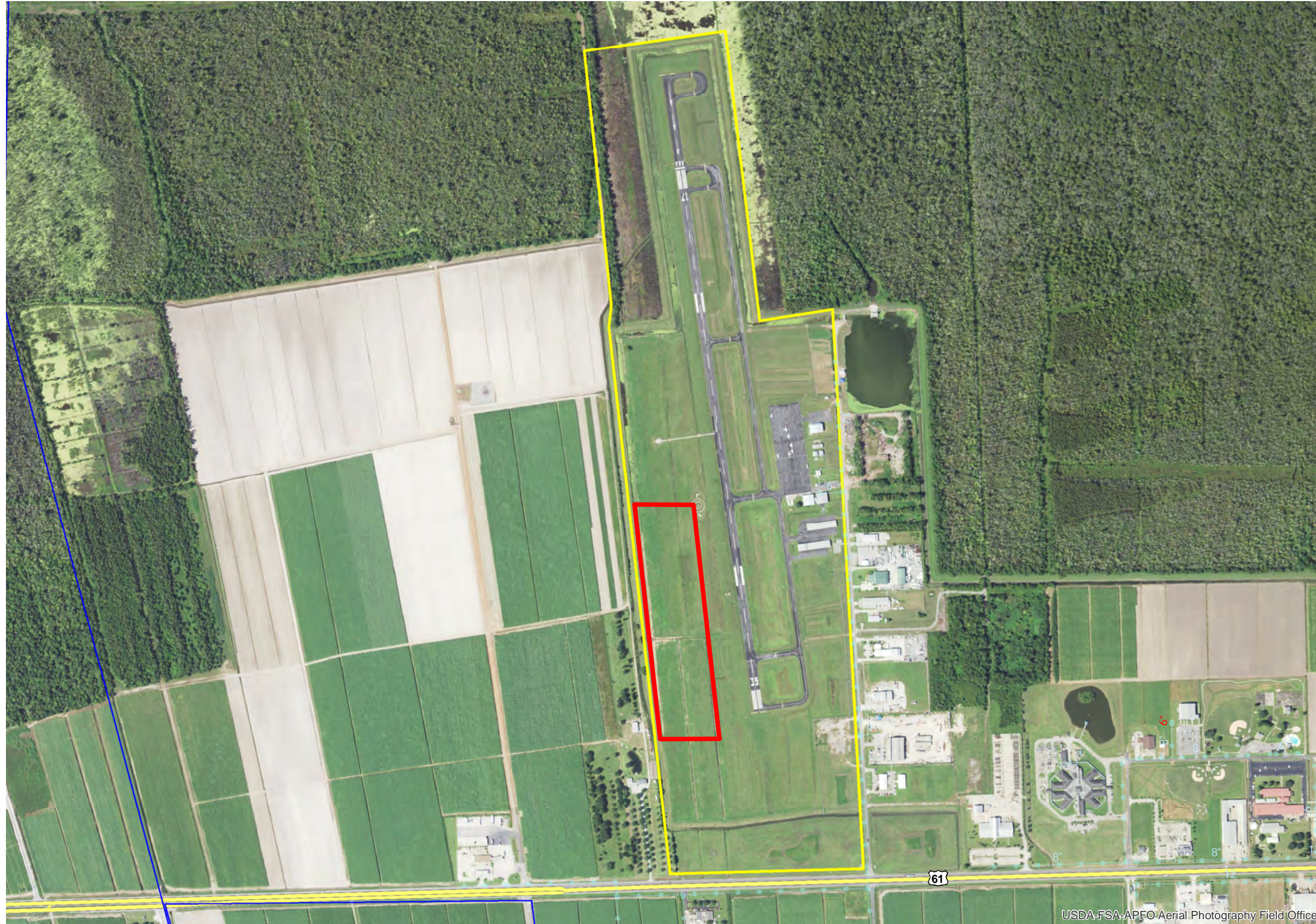


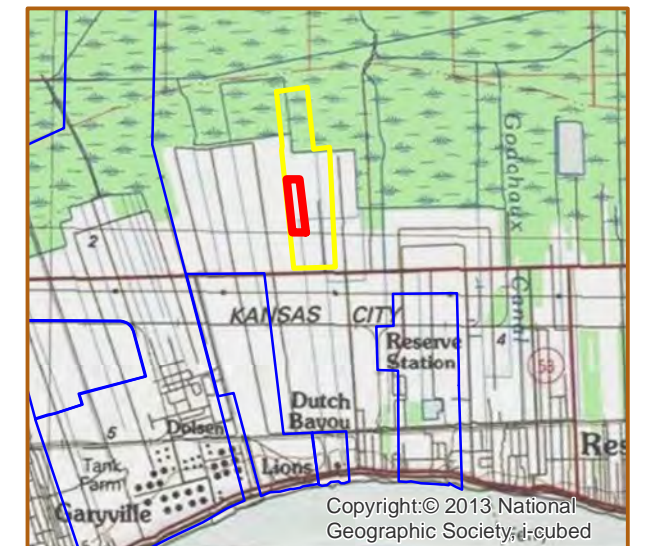
# EXECUTIVE REGIONAL AIRPORT SITE



- SITE  
+/- 21 Acres    8.5 Hectares
- PSL Executive Regional Airport
- Resident Industry
- I Interstates                      + Railroads
- U.S. Highway                      — Waterline
- State Highway                      — Wastewater

Updated 2018-06-05

0      0.125      0.25      0.5  
Miles



USDA-FSA-APFO Aerial Photography Field Office



## Available Site Descriptions

PROPERTY NAME: Executive Regional Airport Site Map #: \_\_\_\_\_

Mile Marker: E 138.5 Acreage: 21.00 Hectares: 8.50

### GENERAL DETAILS

Site Draft: 0.00 River Frontage (in ft.): 0.00 Rail Frontage (in ft.): 0.00

### AGENT DETAILS

Agent: Linda Prudhomme Company: Port of South Louisiana Phone: 985-652-9278

### TRANSPORTATION

Airport: Louis Armstrong International (28 miles); Baton Rouge Metropolitan (47 miles);  
PSL Executive Regional Airport (on-site)

Rail: \_\_\_\_\_

Highway: I-10 (11 miles); LA 641 (8.0 miles); LA 44 (1 mile); US 61 (<1 mile)

Zoning: Industrial Adjacent Land Use: Industrial

Access Road: Paved Parish: St. John the Baptist

### UTILITIES

Electricity: Entergy Water: St. John the Baptist Parish Utilities

Natural Gas: Atmos Sewage: St. John the Baptist Parish Utilities

Telecommunications: Reserve Telecommunications