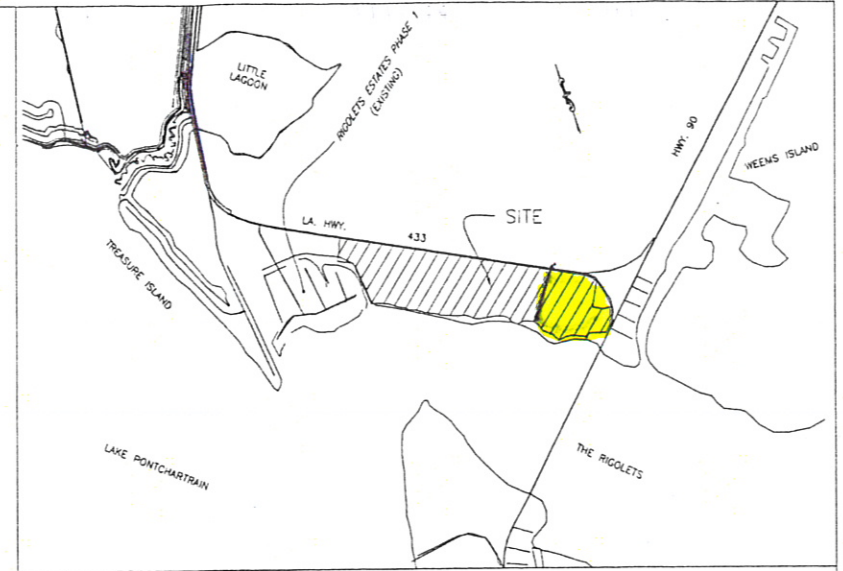
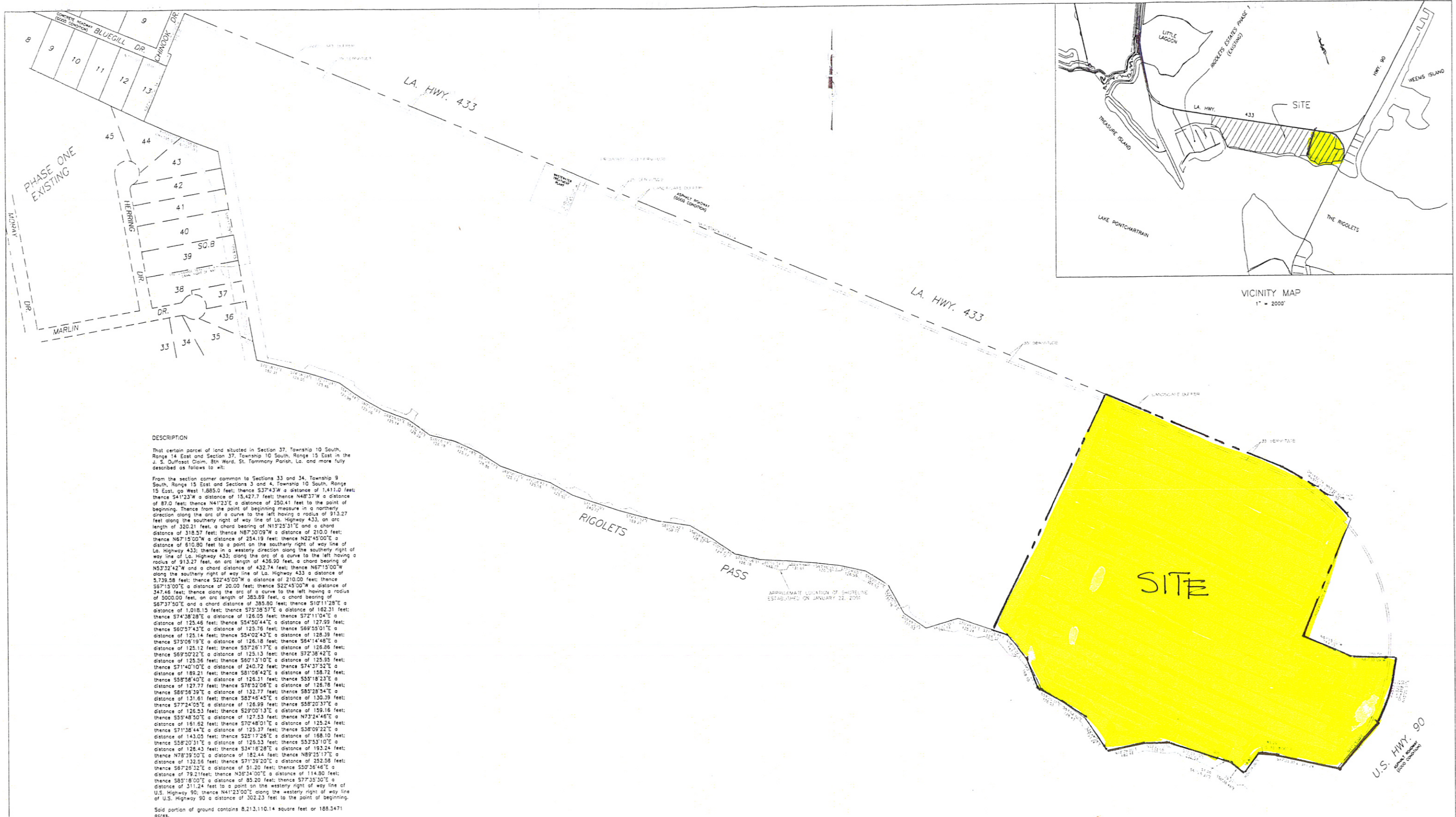


# **EXHIBIT F**

## **BOUNDARY SURVEY**

# EXHIBIT F - BOUNDARY SURVEY



**DESCRIPTION**

That certain parcel of land situated in Section 37, Township 10 South, Range 14 East and Section 37, Township 10 South, Range 15 East in the J. S. Duffessat Claim, 8th Ward, St. Tammany Parish, La. and more fully described as follows to wit:

From the section corner common to Sections 33 and 34, Township 9 South, Range 15 East and Sections 3 and 4, Township 10 South, Range 15 East, go West 1,685.0 feet; thence S37°43'W a distance of 1,411.0 feet; thence S41°23'W a distance of 15,427.7 feet; thence N48°37'W a distance of 87.0 feet; thence N41°23'E a distance of 250.41 feet to the point of beginning. Thence from the point of beginning measure in a northerly direction along the arc of a curve to the left having a radius of 913.27 feet along the southerly right of way line of La. Highway 433, on an arc length of 320.21 feet a chord bearing of N15°25'31"E and a chord distance of 318.57 feet; thence N67°30'09"W a distance of 210.00 feet; thence N67°15'00"W a distance of 254.19 feet; thence N22°45'00"E a distance of 610.80 feet to a point on the southerly right of way line of La. Highway 433; thence in a westerly direction along the southerly right of way line of La. Highway 433; along the arc of a curve to the left having a radius of 913.27 feet, on an arc length of 436.90 feet, a chord bearing of N53°32'42"W and a chord distance of 432.74 feet; thence N67°15'00"W along the southerly right of way line of La. Highway 433 a distance of 5,739.58 feet; thence S22°45'00"W a distance of 210.00 feet; thence S67°15'00"E a distance of 20.00 feet; thence S22°45'00"W a distance of 347.46 feet; thence along the arc of a curve to the left having a radius of 5000.00 feet, on an arc length of 385.89 feet, a chord bearing of S67°37'50"E and a chord distance of 385.80 feet; thence S10°11'28"E a distance of 1,018.15 feet; thence S75°58'57"E a distance of 162.31 feet; thence S74°38'28"E a distance of 126.05 feet; thence S72°11'04"E a distance of 125.46 feet; thence S54°50'44"E a distance of 127.99 feet; thence S60°57'43"E a distance of 125.76 feet; thence S69°55'01"E a distance of 125.14 feet; thence S54°02'43"E a distance of 128.39 feet; thence S75°05'19"E a distance of 126.18 feet; thence S54°14'48"E a distance of 125.12 feet; thence S57°26'17"E a distance of 126.86 feet; thence S69°50'22"E a distance of 125.13 feet; thence S72°38'42"E a distance of 125.36 feet; thence S60°13'10"E a distance of 125.35 feet; thence S71°40'10"E a distance of 240.72 feet; thence S74°37'52"E a distance of 189.21 feet; thence S51°08'42"E a distance of 158.12 feet; thence S55°58'40"E a distance of 126.31 feet; thence S55°18'23"E a distance of 127.77 feet; thence S75°52'06"E a distance of 126.78 feet; thence S89°58'39"E a distance of 132.77 feet; thence S85°28'54"E a distance of 131.61 feet; thence S87°48'45"E a distance of 130.39 feet; thence S77°24'05"E a distance of 126.99 feet; thence S58°20'37"E a distance of 126.53 feet; thence S29°00'13"E a distance of 159.16 feet; thence S55°48'50"E a distance of 127.33 feet; thence N73°24'46"E a distance of 161.62 feet; thence S70°48'01"E a distance of 125.24 feet; thence S71°38'44"E a distance of 125.37 feet; thence S38°09'22"E a distance of 143.03 feet; thence S25°17'26"E a distance of 168.10 feet; thence S58°20'31"E a distance of 126.33 feet; thence S53°53'10"E a distance of 126.43 feet; thence S34°18'28"E a distance of 193.24 feet; thence N78°39'50"E a distance of 182.44 feet; thence N89°51'17"E a distance of 132.58 feet; thence S71°39'20"E a distance of 252.58 feet; thence S67°26'32"E a distance of 51.20 feet; thence S50°36'46"E a distance of 79.21 feet; thence N36°34'00"E a distance of 114.80 feet; thence S85°18'00"E a distance of 85.20 feet; thence S77°35'30"E a distance of 311.24 feet to a point on the westerly right of way line of U.S. Highway 90; thence N41°23'00"E along the westerly right of way line of U.S. Highway 90 a distance of 302.23 feet to the point of beginning.

Said portion of ground contains 8,213,110.14 square feet or 188.5471 acres.

**RIGOLETS ESTATES PUD**  
 PORTION OF SECTION 37, T10S-R14E &  
 SECTION 37, T10S-R15E, J. S. DUFFESAT CLAIM  
 WARD 8  
 ST. TAMMANY PARISH, LA.

**KREBS, LASALLE, LEMIEUX, CONSULTANTS, INC.**  
 ENGINEERING • PLANNING • SURVEYING • HYDROLOGY • ENVIRONMENTAL

3013 27TH STREET METAIRIE, LA 70002 (504)837-9470  
 2107 N. CAUSEWAY BLVD. SUITE F, MANDEVILLE, LA 70448 (985)834-8133

DATE: MAY 3, 2005	SCALE: 1" = 200'	DRAWING NO. 1 OF 1
PROJECT NO.: 404-0075	DRAWN BY: PWA	FILE NO.:

