

# Exhibit B.

## Crosspoint South Site

### Oblique Aerial Photo Map

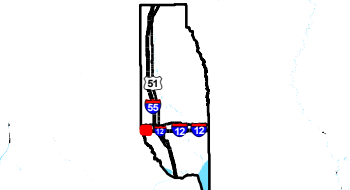
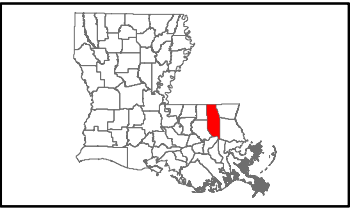


**GREATER NEW ORLEANS**  
INC  
REGIONAL ECONOMIC DEVELOPMENT

# Crosspoint South Site Oblique Aerial Photo Map

Crosspoint South Site  
Tangipahoa Parish, LA

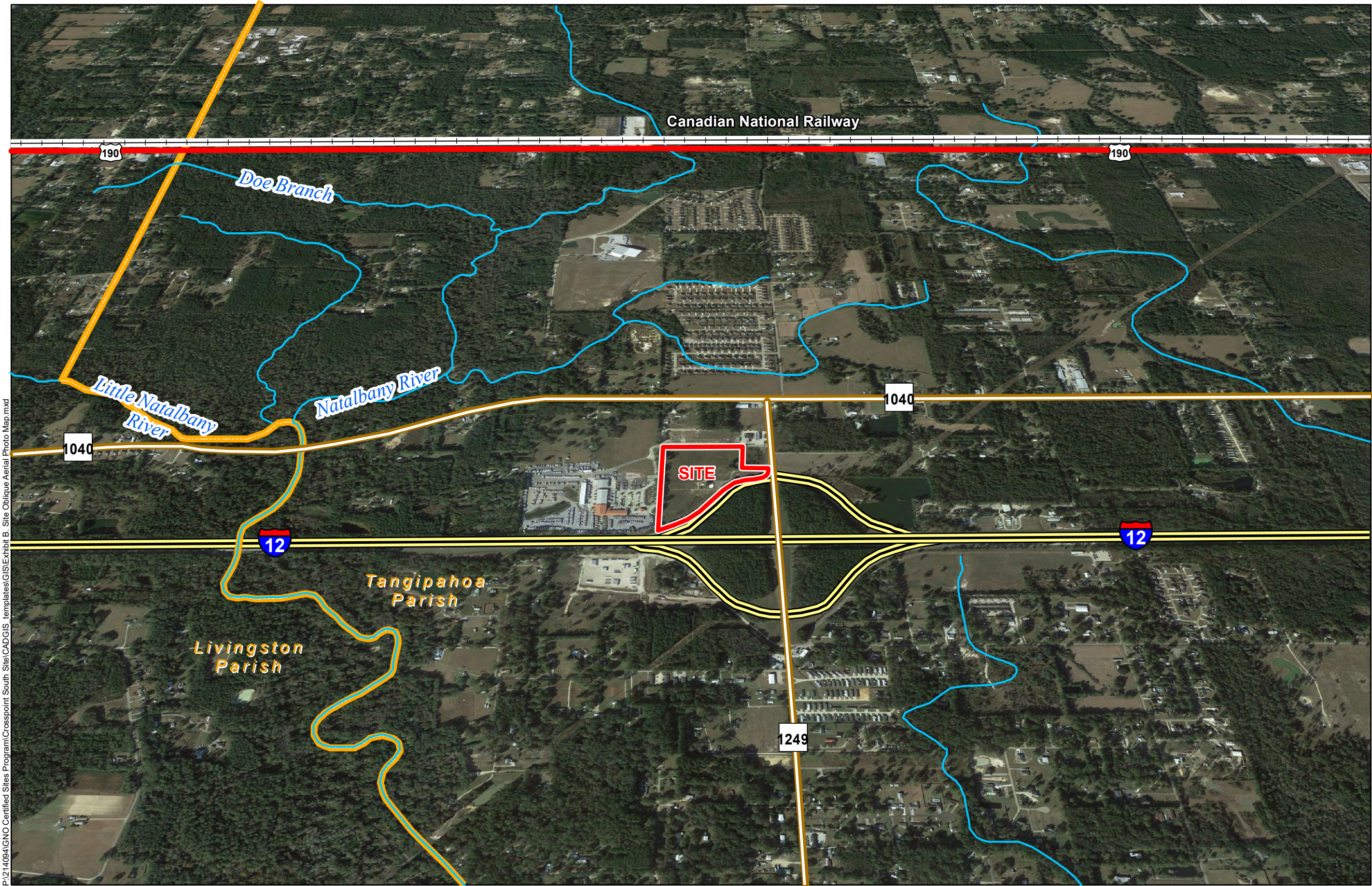
GNO



Tangipahoa Parish

LEGEND

- Site Boundary (19.94 Ac. ±)
- Parish Boundary
- Existing Roadway
  - Interstate
  - US Highway
  - Rural State Highway
  - Local Roads
- Railroad
- Stream



P:\214094\GNO Certified Sites Program\Crosspoint South Site\CADGIS templates\GIS\Exhibit B. Site Oblique Aerial Photo Map.mxd

General Notes:  
1. No attempt has been made by CSRS, Inc. to verify site boundary, title, actual legal ownership, deed restrictions, servitudes, easements, or other burdens on the property, other than that furnished by the client or his representative.  
2. Transportation data from 2013 TIGER datasets via U.S. Census Bureau at <ftp://ftp2.census.gov/geo/tiger/TIGER2013>.  
3. 2015 aerial imagery from USDA-APFO National Agricultural Inventory Project (NAIP) and may not reflect current ground conditions.



Date: 10/30/2020  
Project Number: 214094  
Drawn By: SEW  
Checked By: EEB

