

Exhibit O. I-12 Industrial Site Electrical Transmission Infrastructure Map

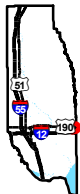
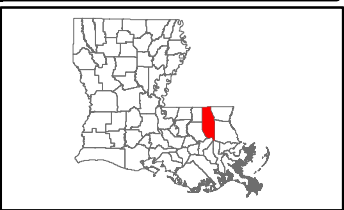


CSRS

I - 12 Industrial Site Electrical Transmission Infrastructure Map

I - 12 Industrial Site
Tangipahoa Parish, LA

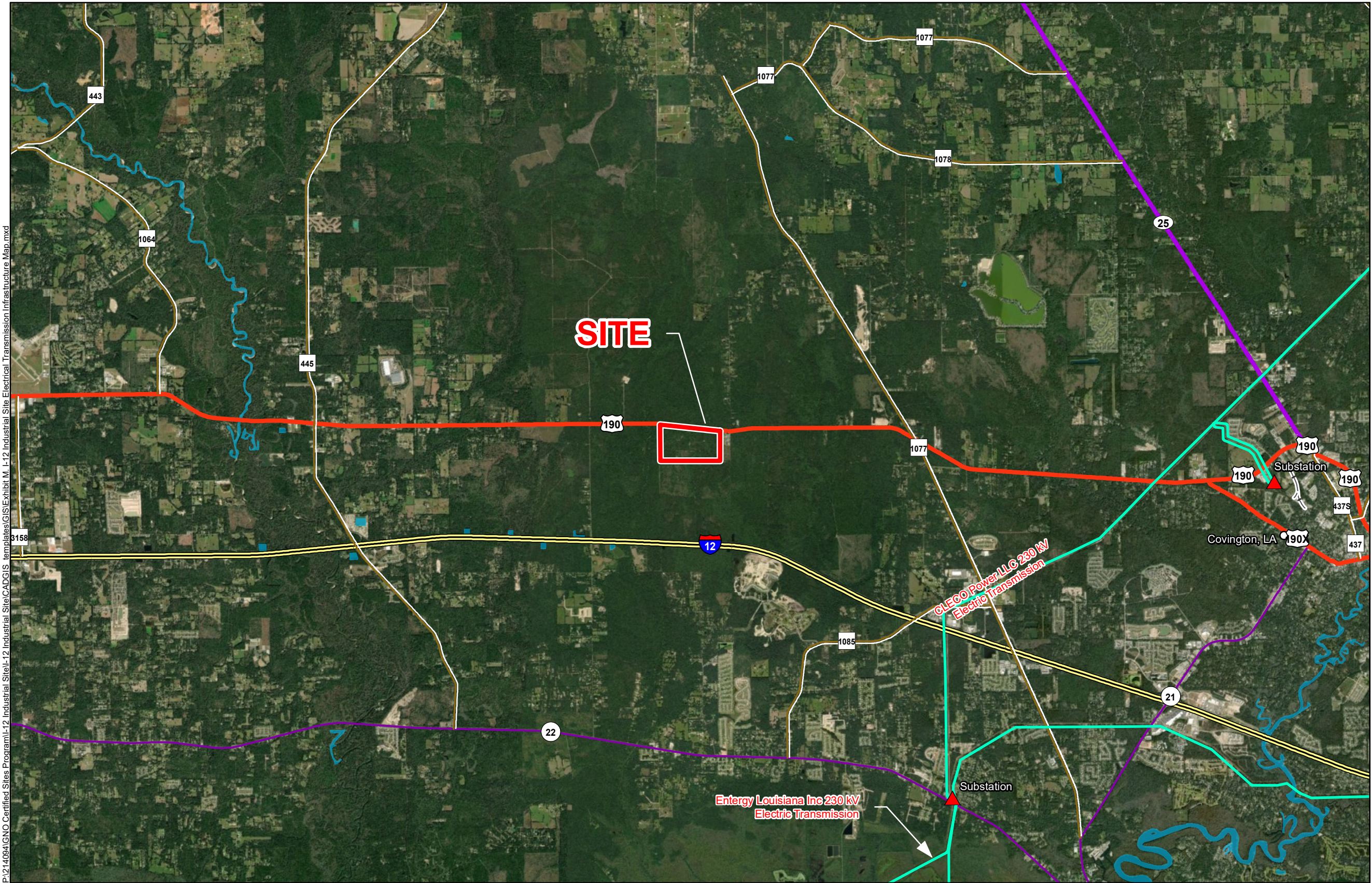
GNO



Tangipahoa Parish

LEGEND

- Site Boundary
- Substation
- Electric Transmission
 - 230 kV
- Existing Roadway
 - Interstate
 - US Highway
 - 4-Lane State Highway
 - Urban State Highway
 - Rural State Highway
- Cities
- Railroad
- Waterbody



P:\214094\GNO Certified Sites Program\L-12 Industrial Site\L-12 Industrial Site\CAD\GIS templates\GIS\Exhibit M. L-12 Industrial Site Electrical Transmission Infrastructure Map.mxd

General Notes:

1. No attempt has been made by CSRS, Inc. to verify site boundary, title, actual legal ownership, deed restrictions, servitudes, easements, or other burdens on the property, other than that furnished by the client or his representative.
2. Transportation data from 2013 TIGER datasets via U.S. Census Bureau at <ftp://ftp2.census.gov/geo/tiger/TIGER2013>.
3. Utility information from visual inspection and/or the individual utility operators. Exact field location has not been determined by survey. The lines shown are an approximate representation only and may have been offset for depiction purposes.
4. 2015 aerial imagery from USDA-APFO National Agricultural Inventory Project (NAIP) and may not reflect current ground conditions.



Scale 1:90,000
0 4,800 9,600 Feet



Date: 5/2/2019
Project Number: 214094
Drawn By: AMB
Checked By: DWC

