

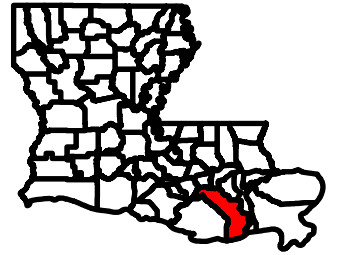
Exhibit W. South Lafourche Airport South Site Soils Conservation Service Map



South Lafourche Airport South Site Soils Conservation Service Map

Site Exhibit for
South Lafourche
Airport South Site
Lafourche Parish, LA

SLEC



Legend

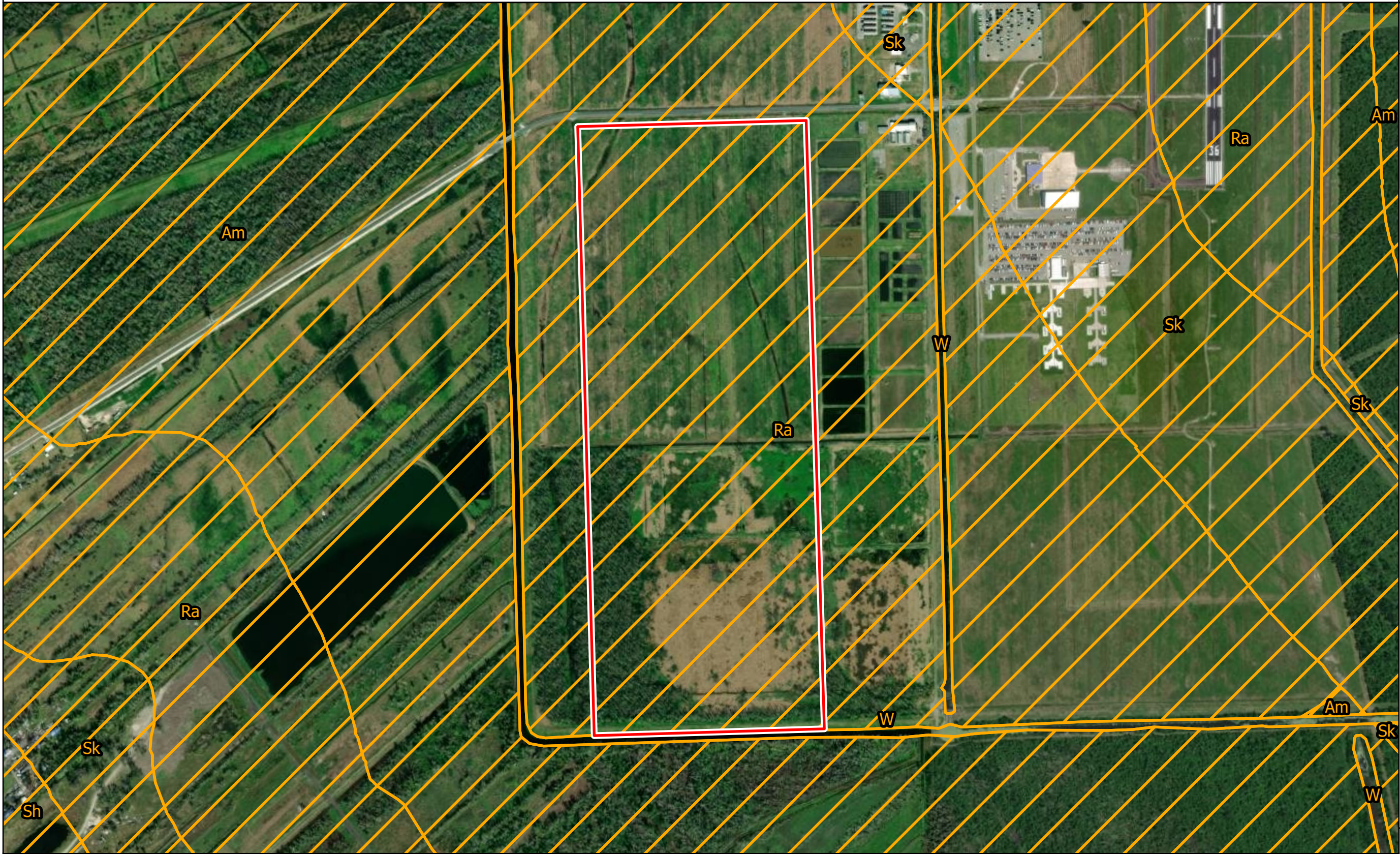
Site Boundary
(±131.54 ac.)

Soil Type

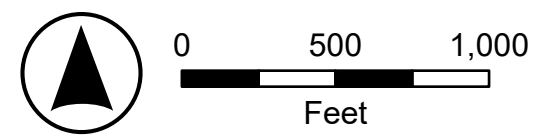
- Am - Allemands muck (100% hydric)
- Ra - Rita muck (90% hydric)
- Sh - Schriever silty clay loam (90% hydric)
- Sk - Schriever clay (95% hydric)
- W - Water



Date: 8/22/2024
Project Number: 216270
Drawn By: BMS
Checked By: EEB



General Notes:
 1. The information presented herein is for planning purposes only. Further detailed due diligence MUST be completed prior to making decisions regarding the site.
 2. No attempt has been made by CSRS, Inc. to verify site boundary, title, actual legal ownership, deed restrictions, servitudes, easements, or other burdens on the property, other than that furnished by the client or his representative.
 3. Transportation data from 2023 TIGER datasets via U.S. Census Bureau at <https://www.census.gov/geographies/mapping-files/time-series/geo/tiger-line-file.html>.
 4. Aerial imagery is compiled from multiple different sources to create one cohesive image and may not reflect current ground conditions.
 5. Soils data is from the USDA-NRCS Web Soil Survey website: <https://websoilsurvey.nrcs.usda.gov/app/>.



P:\216270\South Lafourche Airport Certification_South\CAD\GIS_templates\GIS\South