

Exhibit U. Dow Louisiana Operations West National Wetlands Inventory Map

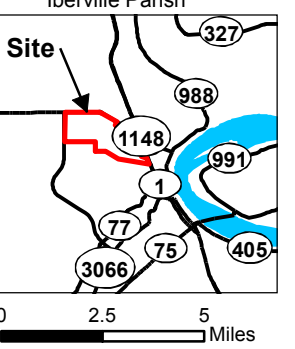
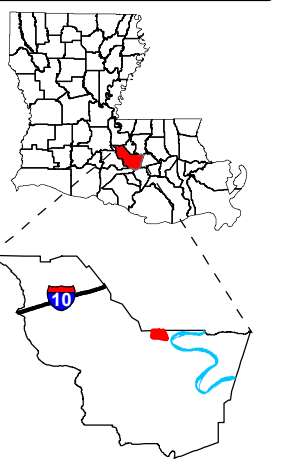


P:\212161\Sites Under Contract\007-DOW-Iberville 990\Maps and Drawings\DOWN\Wetlands\Map.mxd

Source: Esri, DigitalGlobe, GeoEye, Earthstar, USDA, USGS, AEX, Getmapping, Aerogrid, IGN, IGP, swisstopo, and the GIS User Community

Project:
**Site Exhibit for
Dow Site
Iberville Parish, LA**

Client:
BRAC



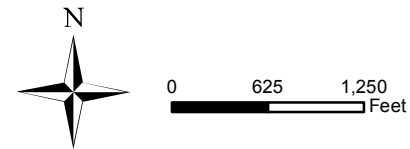
- Legend:**
- Wetland Type**
- PAB4H, PUBH - Freshwater Pond
 - PEM1 - Freshwater Emergent Wetland
 - PFO1, PSS1 - Freshwater Forested/Shrub Wetland
 - 10 - LA Highway
 - Local Roads
 - Railroad
 - Dow Site
 - Parish Boundary

Baton Rouge Area Chamber.

Source:
GIS features acquired from public domain state and federal data sources (LDOTD, GNIS, LOSCO, US Census Bureau).

Date: 11/4/2013
Project Number: 212161.20.007
Drawn By: JES
Checked By: TMG

- General Notes:**
1. No attempt has been made by CSRS, Inc. to verify title, actual legal ownership, deed restrictions, servitudes, easements, or other burdens on the property, other than that furnished by the client or his representative.
 2. Section lines have not been verified in the field and any shown are for general locative information only.
 3. Exact locations of oil and gas wells has not been field verified and is for general locative information only.
 4. Railroad and Highway data obtained from LDOTD datasets via Atlas: The Louisiana Statewide GIS at <http://atlas.lsu.edu>.



CSRS
IMAGINE SHAPE DELIVER

6767 Perkins Road Suite 200 Baton Rouge, LA 70808
Telephone: 225 769-0546 Fax: 225 767-0060
www.csrsonline.com