

May 4, 2015

Mr. Larry Henson
Louisiana Economic Development (LED)
1051 North Third St.
Baton Rouge, LA 70802-5239

Mr. David Conner
Southwest Economic Development Alliance (SWLA)
P.O. Box 3110
Lake Charles, LA 70602

RE: B11-Chennault Sites 2 & 2A (185 Acres)
Telecommunications Service

Dear Gentlemen:

SJB Group, LLC (SJB) has been authorized by Louisiana Economic Development (LED and Southwest Louisiana Economic Alliance (SWLA) to perform due diligence investigations to determine the existence of fatal flaws, if any, that would inhibit the development of Chennault Sites 2 & 2A (+/- 185 acres), located southeast of the City of Lake Charles in Calcasieu Parish, Louisiana.

The local provider of telecommunication services is Sudden Link, whose offices are located at 1538 E. Prien Lake Road, Lake Charles, LA 70601, which is approximately three (3) miles from the site. The point of contact with Sudden Link that provided the requested information was Jeffery LeBlanc, who can be reached at (337) 912-3224. The distance to provider's nearest telecommunications line is approximately 2,334 feet. Sudden Link has indicated that they have the capability to quickly service the site and will able to provide digital switching, fiber optic cable, T-1 lines, T-3 lines within 180 days or less. Costs would vary depending on site conditions.

Please feel free to contact me at (225) 769-3400, at any time, should you have any questions or need further information.

Sincerely,

SJB GROUP, LLC



Michael L. Thompson, P.E., C.E.T.
Engineering Department Manager

Enclosure: Exhibit E – Chennault Sites 2&2A – Telecommunications Service
Map

G:\ENGPROM\LDD\11341_0 B11-Chennault Site 2-2A 185Acres\Utilities\Telecommunications\Cover Letter-
Telecommunications.docx

Parks & Planning

Transportation

Site Development

Utility Systems

Land Surveying

Construction Services

Environmental Services

Real Estate Services

P. O. Box 1751

Baton Rouge, Louisiana

70821-1751

(225) 769-3400

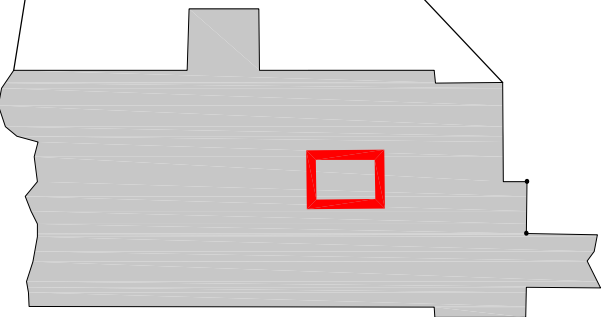
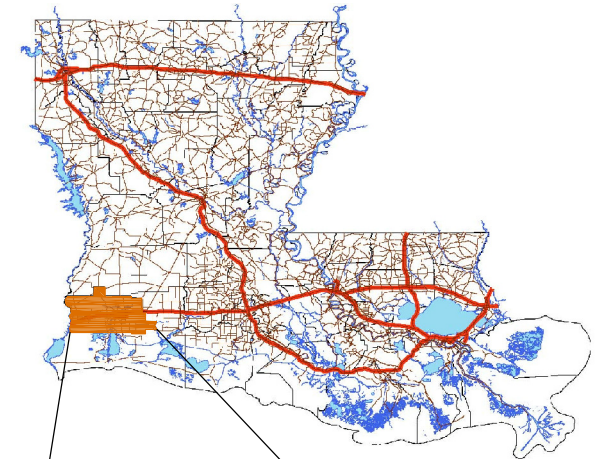
Fax (225) 769-3596

www.sjbgroup.com



Exhibit L5 - Chennault Tract 2-2A - Telecommunications Service Map



 **Calcasieu Parish**



Available Site

-  Tract 2-2A
-  Existing Suddenlink Fiber Optic Lines

Source:
 - Aerial Photo: 2014 Google Earth
 - Site Boundaries are Approximate
 - 12/10/2014



(IN FEET)
 1 INCH = 1000 ft.