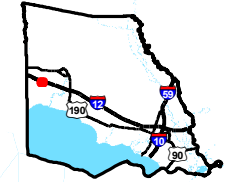


# Exhibit T. The Lakes at Madison Park Site Soils Conservation Service Map

NRCS Soils Map  
The Lakes at Madison Park Site  
St. Tammany Parish, LA

Darby Holdings, LLC



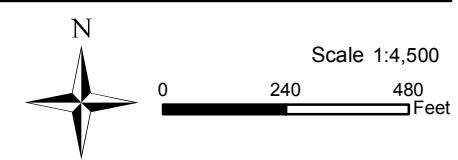
St. Tammany Parish  
LEGEND

- Site Boundary ( 33.548 Acres +/- )
- See Soil Report for Definitions
- Existing Roadway**
- Interstate
- Rural State Highway
- Local Roads
- Stream or River



P:\215029\St. Tammany Certified Sites\Judy Darby Site\CAD\GIS templates\GIS\Exhibit T. The Lakes at Madison Park Site Soils Conservation Service Map.mxd

- General Notes:
1. No attempt has been made by CSRS, Inc. to verify site boundary, title, actual legal ownership, deed restrictions, servitudes, easements, or other burdens on the property, other than that furnished by the client or his representative.
  2. Transportation data from 2013 TIGER datasets via U.S. Census Bureau at [ftp://ftp2.census.gov/geo/tiger/TIGER2013](http://ftp2.census.gov/geo/tiger/TIGER2013).
  3. Soils data from USDA SSURGO website: <http://websoilsurvey.sc.egov.usda.gov/App/WebSoilSurvey.aspx>.
  4. 2013 aerial imagery from USDA-APFO National Agricultural Inventory Project (NAIP) and may not reflect current ground conditions.



Date: 6/23/2015  
Project Number: 215029  
Drawn By: AMB  
Checked By: JAY

