

FOR SALE OR LEASE >

PORT INDUSTRIAL BUILDING

6700 Sloane Drive, Little Rock, AR



Location

6700 Sloane Drive is located in the Little Rock Port near I-440

Site Size

- > Building size: +/- 87,100 SF
 - May be subdivided
- > Lot size: +/- 6.93 acres

Zoning

- > I-3 - Heavy Industrial District

Year Built / Expanded

- > 2001

Pricing

- > Sale price: \$3,495,000
- > Lease rate: \$3.50/SF, NNN

Property Features

- > Four dock-high doors
- > Three drive-in doors
- > Office: approximately 5,000 SF
- > Fully sprinkled
- > Adjacent to Little Rock Port, which provides excellent rail and water transportation options
- > Room for building or truck court expansion
- > 50' x 25' column spacing
- > Clear height: 18'-22'

FOR SALE OR LEASE > PORT INDUSTRIAL BUILDING

6700 Sloane Drive, Little Rock, AR



Contact Us

CLARK IRWIN, CCIM
501 978 6588
clark.irwin@colliers.com

DREW HOLBERT, CCIM, SIOR
501 850 0756
drew.holbert@colliers.com

COLLIERS INTERNATIONAL
1 Allied Dr, Suite 1500
Little Rock, AR 72202
+1 501 372 6161
www.colliers.com/

CORE VALUES

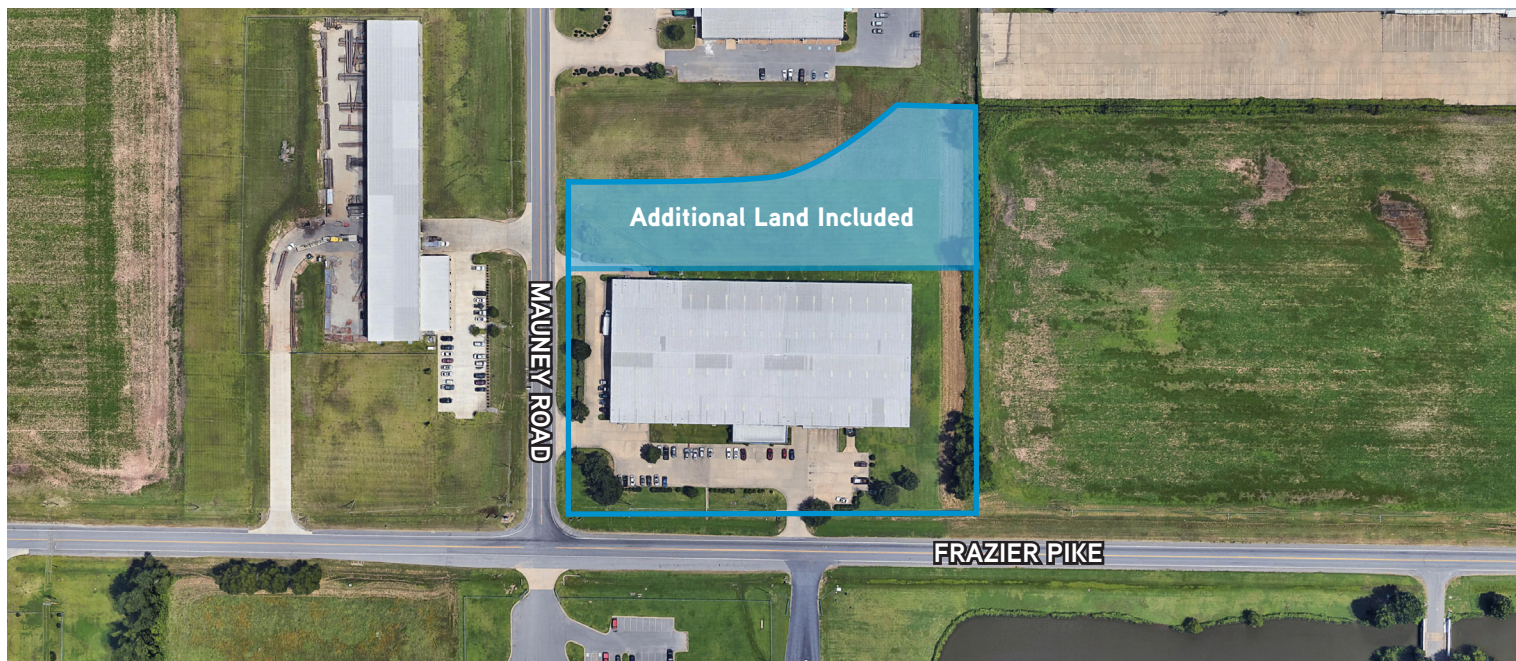
Client

Firm

Self

Fun

AERIAL



This document has been prepared by Colliers International for advertising and general information only. Colliers International makes no guarantees, representations or warranties of any kind, expressed or implied, regarding the information including, but not limited to, warranties of content, accuracy and reliability. Any interested party should undertake their own inquiries as to the accuracy of the information. Colliers International excludes unequivocally all inferred or implied terms, conditions and warranties arising out of this document and excludes all liability for loss and damages arising there from. This publication is the copyrighted property of Colliers International and/or its licensor(s). ©2016. All rights reserved.