

Pointe Coupee Electric Membership Corporation

2506 False River Drive ♦ P. O. Box 160 ♦ New Roads, LA 70760
Phone (225) 638-3751 ♦ Fax (225) 638-8124 ♦ www.pcemc.org

Exhibit L. NRG Industrial Park Electrical Transmission Infrastructure Map & Letter

Memo

To: Jim Cavanaugh, BRAC
From: Joseph H. Cotten, Jr., General Manager
CC:
Date: June 28, 2013
Re: Big Cajun II Site

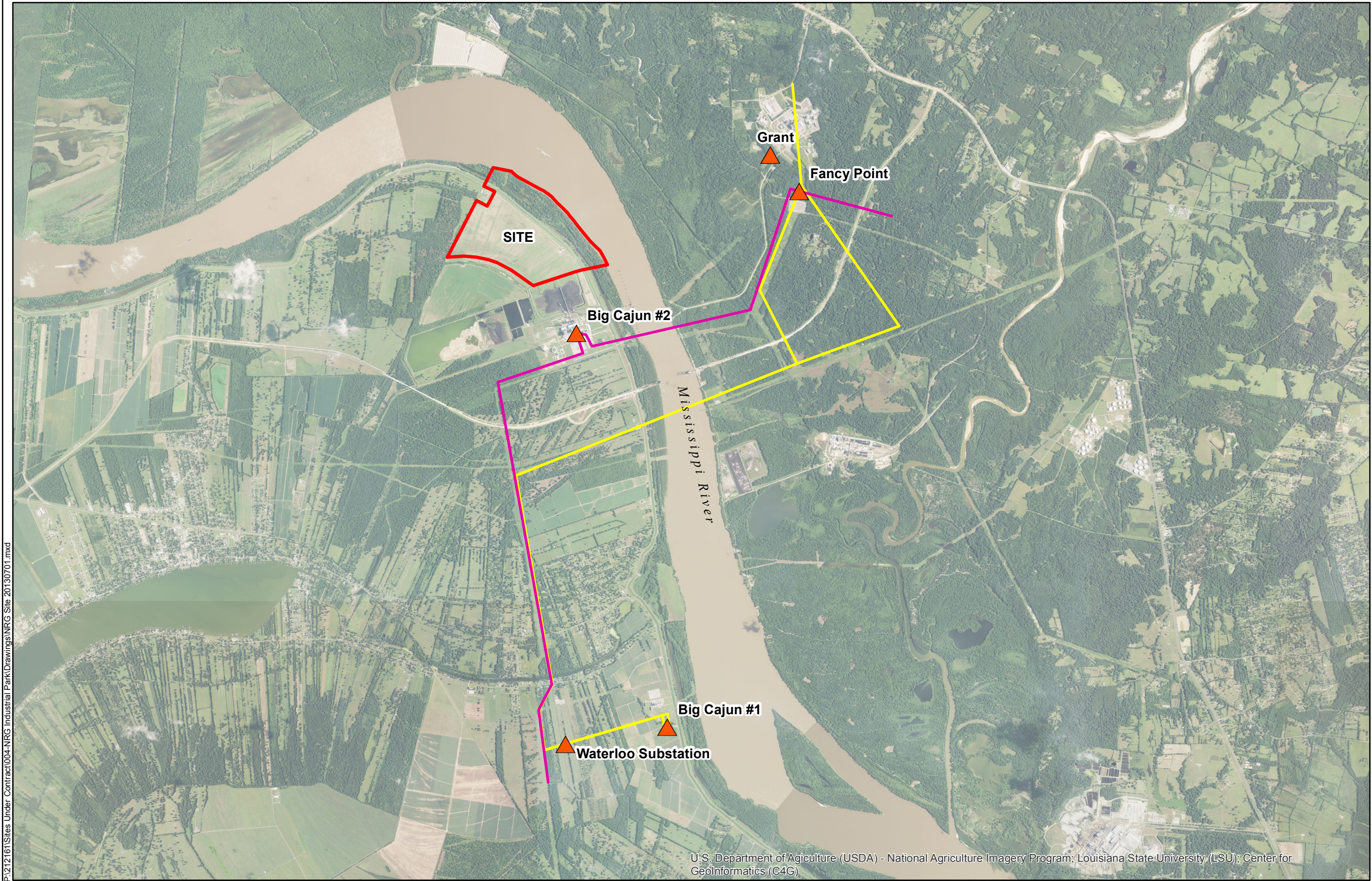
Pointe Coupee Electric has 2 distribution substations and one transmission station located within 10 miles of the site. There is a PCE 69kV transmission line located within 3 miles of the site. Initial load for this site is 30 (MW).

Pointe Coupee Electric through its power supplier NRG Energy, Louisiana Generating, LLC, can tap into Entergy's transmission system. There is a 230 kV line located within 3 miles of the site. A transmission study is required once the load size is determined and then a facilities study would be the next step to see what it would cost to upgrade the transmission line, if needed, to serve the load.

Pointe Coupee Electric and Louisiana Generating are here to work with whoever has an interest in this site to acquire the necessary power to serve the load.

Joseph "Jodie" Cotten, Jr.
General Manager
Pointe Coupee Electric
P O Box 160
New Roads, LA 70760
O-225-638-3751
C-225-939-4180
F-225-638-8124
www.pcemc.org
jhcotten@pcemc.org

Exhibit L. NRG Industrial Park Electrical Transmission Infrastructure Map & Letter



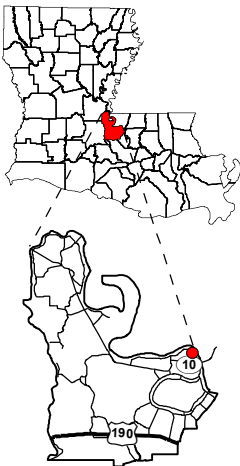
P:\212161\Sites Under Contract\004-NRG Industrial Park\Drawings\NRG Site 20130701.mxd

- General Notes:
1. Electrical Infrastructure information digitized from Entergy Service Map.
 2. Parcel boundaries are a general representation of property boundaries and do not constitute a legal representation of property geometry, area, and/or location.

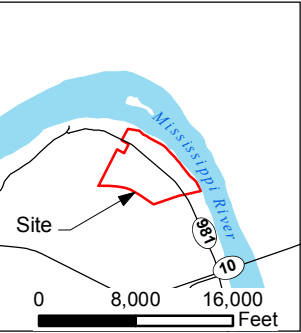
Project:
**Site Exhibit for
NRG Industrial Park
Pointe Coupee Parish, LA**

Client:

BRAC



Pointe Coupee Parish



Legend:

- Site Boundary (640.00± Ac.)
- Infrastructure
- 500 kV Transmission Powerline
- 230 kV Transmission Powerline

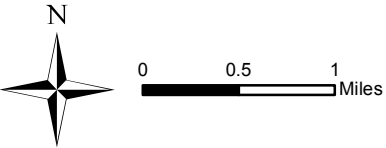


Source:
GIS features acquired from public domain
state and federal data sources (LDOTD,
GNIS, LOSCO, US Census Bureau).

Date:	8/5/2013
Project Number:	212161.004
Drawn By:	JAY
Checked By:	TMG

CSRS
IMAGINE SHAPE DELIVER

6767 Perkins Road Suite 200 Baton Rouge, LA 70808
Telephone: 225 769-0546 Fax: 225 767-0060
www.csrsonline.com



U.S. Department of Agriculture (USDA) - National Agriculture Imagery Program; Louisiana State University (LSU); Center for Geoinformatics (C4G)