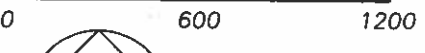


SPC 500-07N-08E-0-035-000-18-1846

GRAPHIC SCALE: 1" = 600'



BASIS OF BEARINGS: GRID NORTH ON 2SEC GPS ARK SPC SYSTEM, NORTH ZONE

NOTE: 90' STREET RIGHT OF WAY DEDICATED TO THE CITY OF WEST MEMPHIS FOR EXTENSION OF FAMILY DOLLAR PARKWAY MAY BE UTILIZED AS TEMPORARY CONSTRUCTION EASEMENT UNTIL CONSTRUCTION OF ROADWAY HAS BEEN COMPLETED.

NOTE: BY RECORDING OF THIS PLAT THE REPLAT DATED SEPT. 5, 2019 AND RECORDED IN PLAT BOOK 5, PAGES 448 & 449 IS CONSIDERED VOID AS IT RELATES TO LOT CONFIGURATION. DEDICATED STREET RIGHT-OF-WAY FOR FAMILY DOLLAR PARKWAY AND ALL UTILITY EASEMENTS REMAIN VALID

① EXISTING 15' UTILITY EASEMENT TO BE ABANDONED UPON RELOCATION OF EXISTING ELECTRIC & WATER LINES.



VICINITY MAP

The undersigned owners of this property shown hereas hereby adopts this as their lot split plat

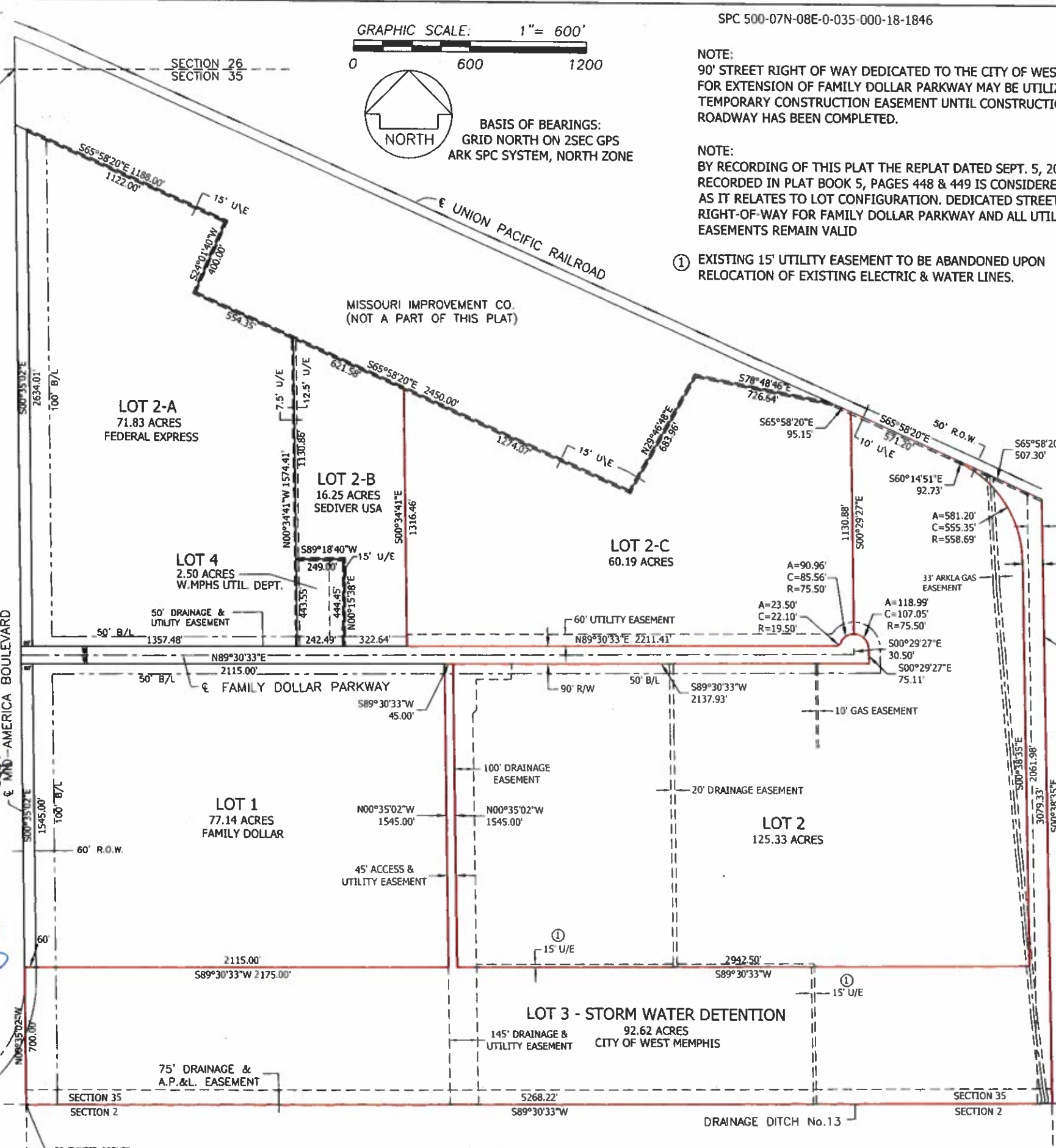
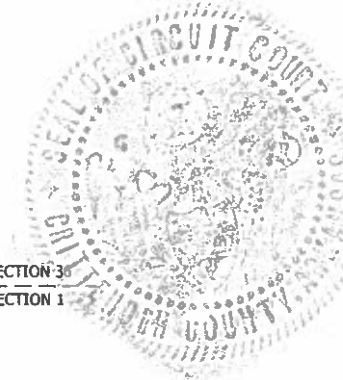
Dennis West 9/17/19
Chairman West Memphis Public Facilities Board

This plat is approved for filing by the City of West Memphis,
Paul Luker 9-17-19
Paul Luker Director of Planning

Todd Pedersen 9-17-19
Todd Pedersen, Gen. Manager West Memphis Utility Commission

Amanda Hicks 9/17/19
Amanda Hicks, City Engineer

State of Arkansas
County Of Crittenden
Filed For Record The
17th Day Of Sept 20, 19
At 1:00 O'Clock P M
And Recorded In Book
PB5 Page 452
Terry Hawkins, Circuit Clerk
By *[Signature]* D.C.



SECTION 27
SECTION 34
NORTHWEST CORNER OF SECTION 35, T-7-N, R-8-E.

SECTION 26
SECTION 35

SECTION 34
SECTION 3

SECTION 35
SECTION 2

SECTION 35
SECTION 2

SECTION 35
SECTION 2

SECTION 35
SECTION 1

SOUTHWEST CORNER OF SECTION 35 T-7-N, R-8-E CRITTENDEN COUNTY, ARKANSAS

GUARANTY LOAN & REAL ESTATE CO.



Sorrell-Smith Engineering Consultants, LLC
245 W. BROADWAY * (870) 735-8084 * WEST MEMPHIS, ARKANSAS 72301

LOT CONSOLIDATION / REPLAT
LOT 2, LOT 2-C & LOT 3
REPLAT OF MID-AMERICA CENTER
CITY OF WEST MEMPHIS, ARKANSAS

DRAWN:
CHECKED:
DATE: SEPT., 2019
SCALE: 1" = 600'

SHEET No. 1 OF 1