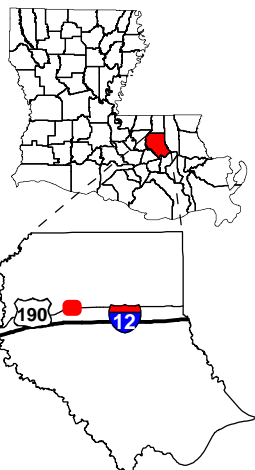


Exhibit A. Livingston Industrial Park FEMA Flood Plain Survey Map

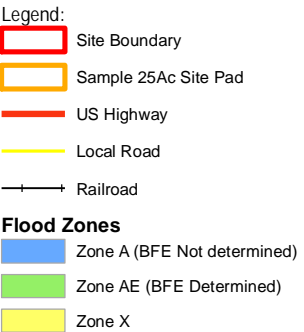
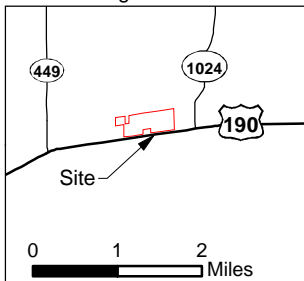
Project:
Livingston Industrial Park
Livingston Parish, LA

Client:

BRAC



Livingston Parish



Source:
GIS features acquired from public domain
state and federal data sources (LDOTD,
GNIS, LOSCO, US Census Bureau).

Date: 12/9/2013
Project Number: 212161.20.009
Drawn By: MMS
Checked By: TMG



P:\212161\Sites Under Contract\009-Livingston Industrial Park\Drawings\Exhibit V Livingston Industrial Park FEMA 100 year Flood Plain Map.mxd

General Notes:

1. No attempt has been made by CSRS, Inc. to verify title, actual legal ownership, deed restrictions, servitudes, easements, or other burdens on the property, other than that furnished by the client or his representative.
2. Roads data obtained from Louisiana GIS Digital Map May 2007 Compilation DVD set.
3. Railroad data obtained from 2013 TIGER datasets via U.S. Census Bureau at [ftp://ftp2.census.gov/geo/tiger/TIGER2013](http://ftp2.census.gov/geo/tiger/TIGER2013).
4. Flood data created by FEMA and ordered from FEMA MSC. FIRM Panels 22063C0140E and 22063C0145E for the site were effective 4/3/2012.
5. USACE BFE determination received 11/26/2013, established as 48'. See Exhibit for details.

Source: Esri, DigitalGlobe, GeoEye, i-cubed, USDA, USGS, AEX, Getmapping, Aerogrid, IGN, IGP, swisstopo, and the GIS User Community



Scale 1:5,000
0 205 410 Feet