

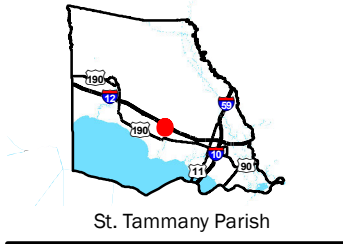
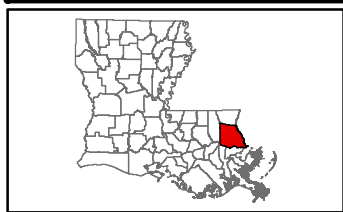
Exhibit W. Lacombe Business Park Soils Conservation Service Map



Lacombe Business Park Soil Conservation Service Map

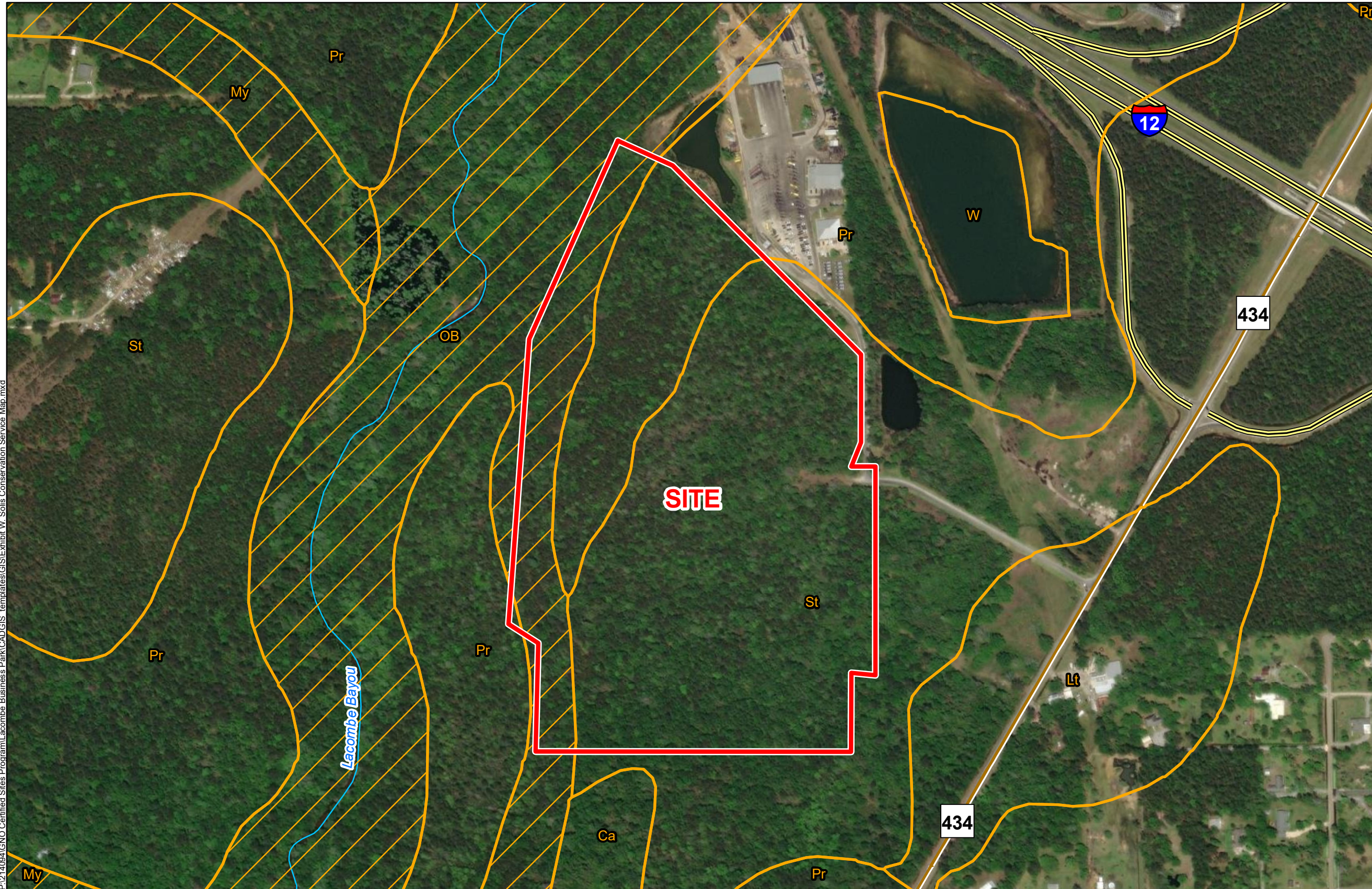
Lacombe Business Park
St. Tammany Parish, LA

St. Tammany Corporation



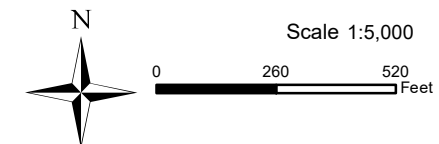
LEGEND

- Site Boundary (69.33± ac.)
- Soil Type**
- Ca - Cahaba fine sandy loam
- Lt - Latonia fine sandy loam
- My - Myatt fine sandy loam (85% hydric)
- OB - Ouachita and Bibb soils (100% hydric)
- Pr - Prentiss fine sandy loam
- St - Stough fine sandy loam
- W - Water
- Stream
- Existing Roadway**
- Interstate
- Rural State Highway



P:\214094\IGNO Certified Sites Program\Lacombe Business Park\CAD\GIS templates\GIS\Exhibit W_Soils Conservation Service Map.mxd

- General Notes:
1. No attempt has been made by CSRS, Inc. to verify site boundary, title, actual legal ownership, deed restrictions, servitudes, easements, or other burdens on the property, other than that furnished by the client or his representative.
 2. Transportation data from 2013 TIGER datasets via U.S. Census Bureau at [ftp://ftp2.census.gov/geo/tiger/TIGER2013](http://ftp2.census.gov/geo/tiger/TIGER2013).
 3. 2015 aerial imagery from USDA-APFO National Agricultural Inventory Project (NAIP) and may not reflect current ground conditions.
 4. Soils data from USDA SSURGO website: <http://websoilsurvey.sc.egov.usda.gov/App/WebSoilSurvey.aspx>.



Date:	1/23/2024
Project Number:	214094
Drawn By:	BMS
Checked By:	EEB

