

Exhibit Z. Foti – Highway 70 Cultural Resources Desktop Study



Foti - Highway 70 Cultural Resources Desktop Study

DESKTOP REVIEW OF CULTURAL RESOURCES BACKGROUND AND RECOMMENDATIONS FOR LED CERTIFICATION OF A 13 ACRE SITE IN ASCENSION PARISH, LOUISIANA (FOTI HWY 70)

August 25, 2017

SURA, Inc.

Introduction

This report addresses a request from DDG/BRAC to review the cultural resources status of a 13 acre site in Ascension Parish, Louisiana, proposed for certification under the small sites certification program. This site is just east of Donaldsonville, on the right descending side of the Mississippi River and is named the Foti Hwy 70 site (Figure 1). In accord with the LED requirements, the State Cultural Resources map was checked to determine if there were any known cultural resources within the project area, and also to find out whether the project area had been previously surveyed archaeologically.

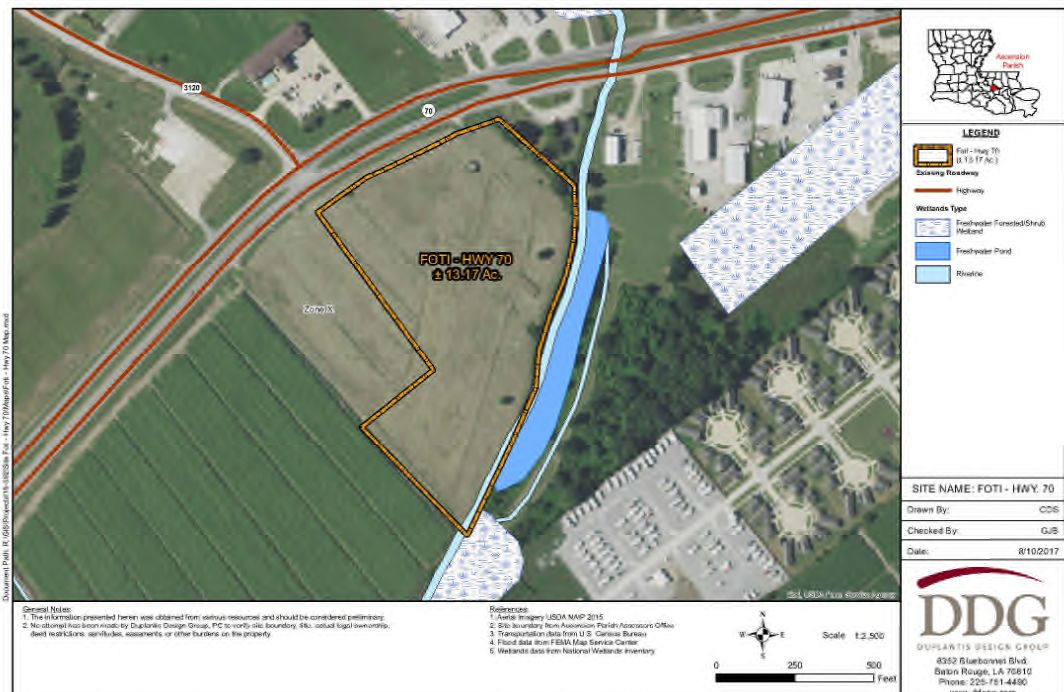


Figure 1. Project Area.

An examination of the cultural resources map indicates that the project area does not possess recorded archaeological sites, nor has it been previously archaeologically surveyed (Figure 2). In the map blue/purple shaded areas indicate previous surveys, while orange polygons show archaeological sites.

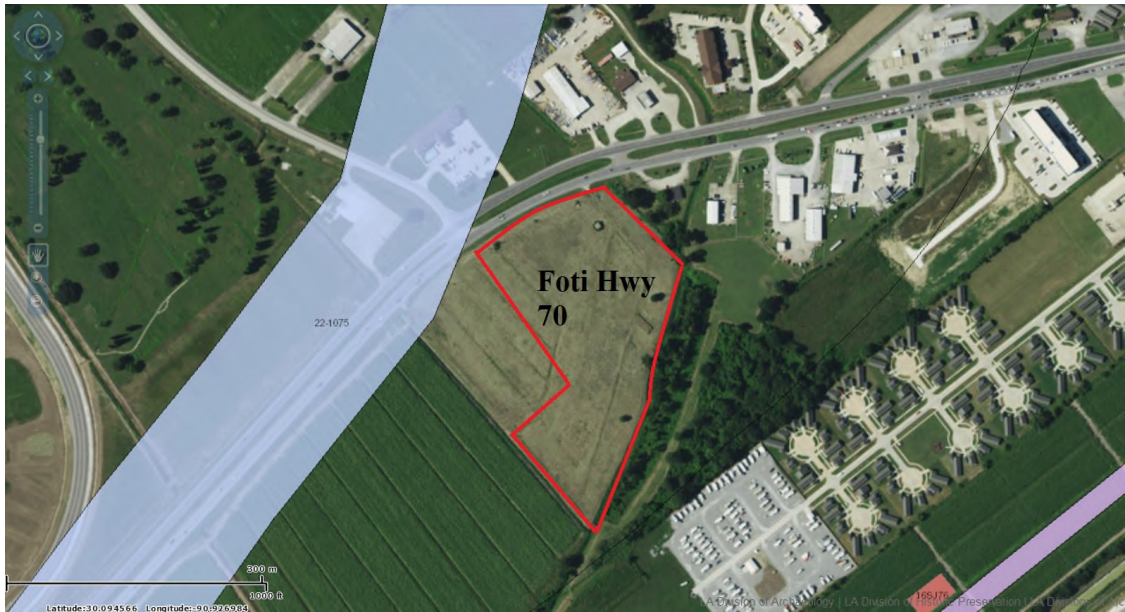


Figure 2. State Cultural Resources Map showing project area.

Figures 1 and 2 do not indicate the presence of standing structures in the area at the present time, nor does the 1883 Mississippi River Commission (MRC) hydrographic survey chart (Figure 3) or the subsequent topographic maps here presented as Figures 4-6.

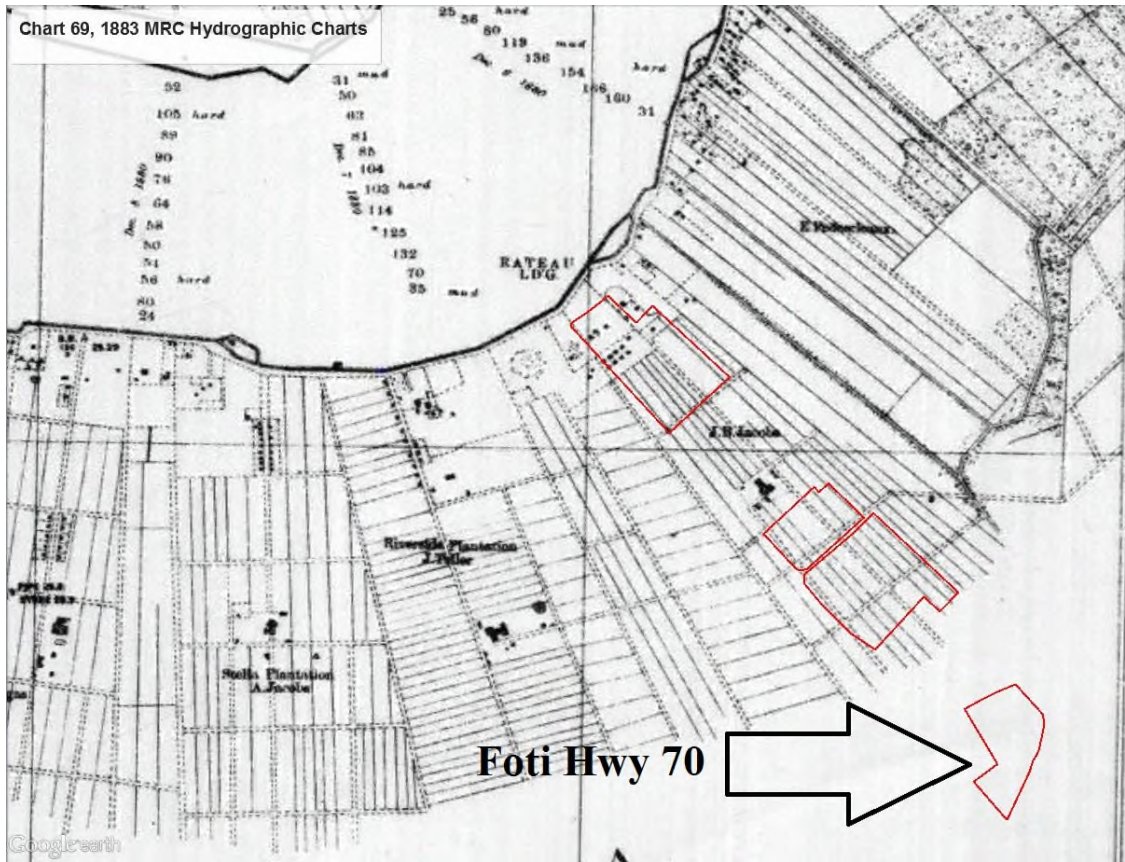


Figure 3. Portion of MRC 1883 hydrographic survey chart.



Figure 4. Portion of USGS 1892 15-minute topographic map.

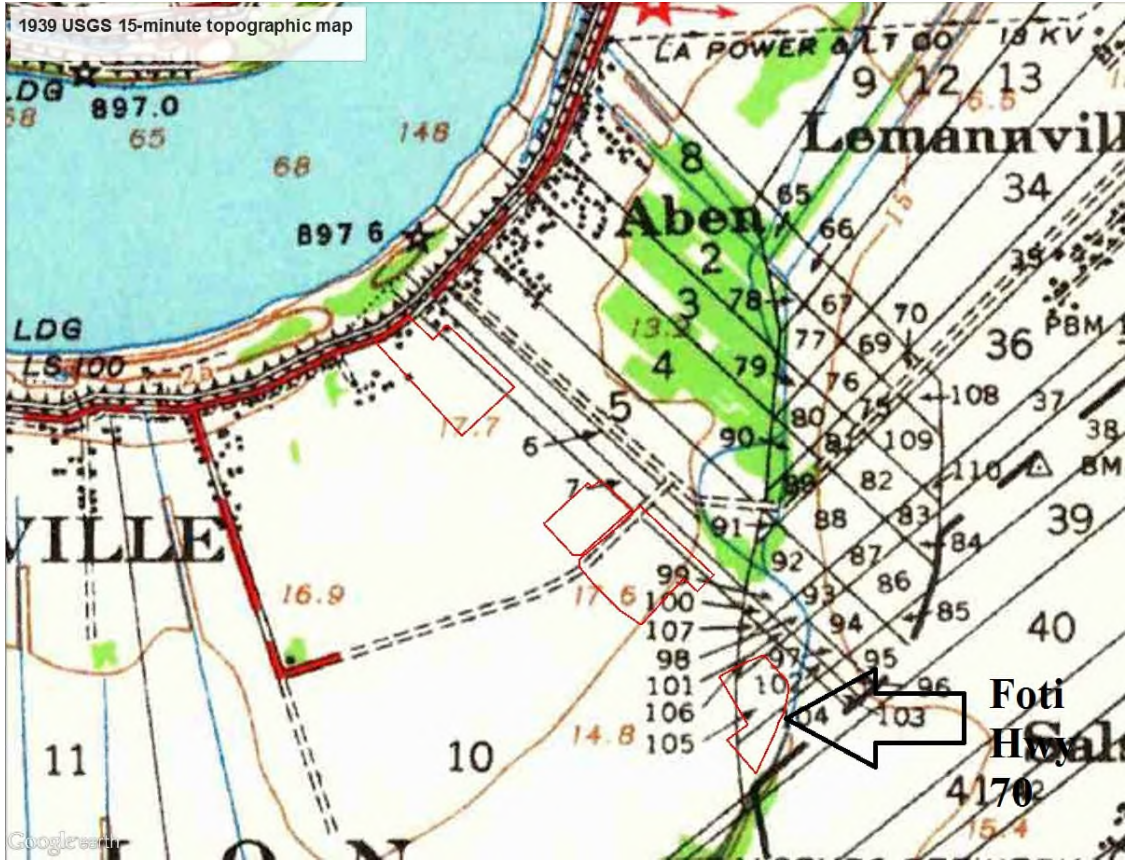


Figure 5. Portion of USGS 1939 15-minute topographic map.

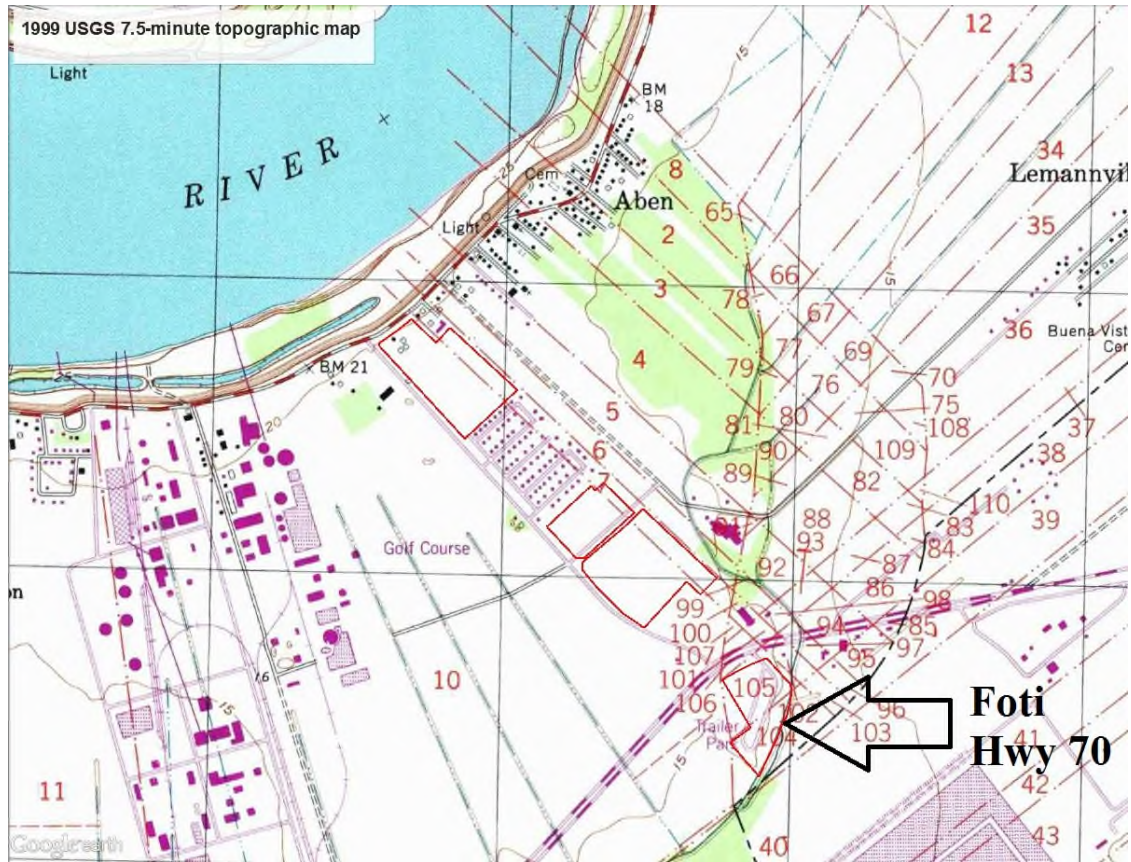


Figure 6. Portion of USGS 1999 7.5-minute topographic map.

Conclusions and Recommendations

The project area is the back swamp side of the Mississippi River and was not a favorable location for human settlement. The maps reviewed do not suggest there were any structures or archaeological sites in the project area. It is considered unlikely that archaeological properties eligible for the National Register of Historic Places under Criterion D (Information Potential) are present.

A Phase I cultural resources survey is not recommended for this property.

REFERENCES

LDOA (Louisiana Division of Archaeology)
n.d. *Site and Project Files*. Baton Rouge.

Maps

MRC (Mississippi River Commission)
1883 Chart 69. Historic Hydrographic Survey Charts.

USGS (United States Geological Survey)
1892 Donaldsonville, La. 15-minute topographic map.
1939 Donaldsonville, La. 15-minute topographic map.
1999 Donaldsonville, La. 7.5-minute topographic map.

www.crt.state.la.us/cultural-development (Accessed August 24, 2017).