

Exhibit BB.

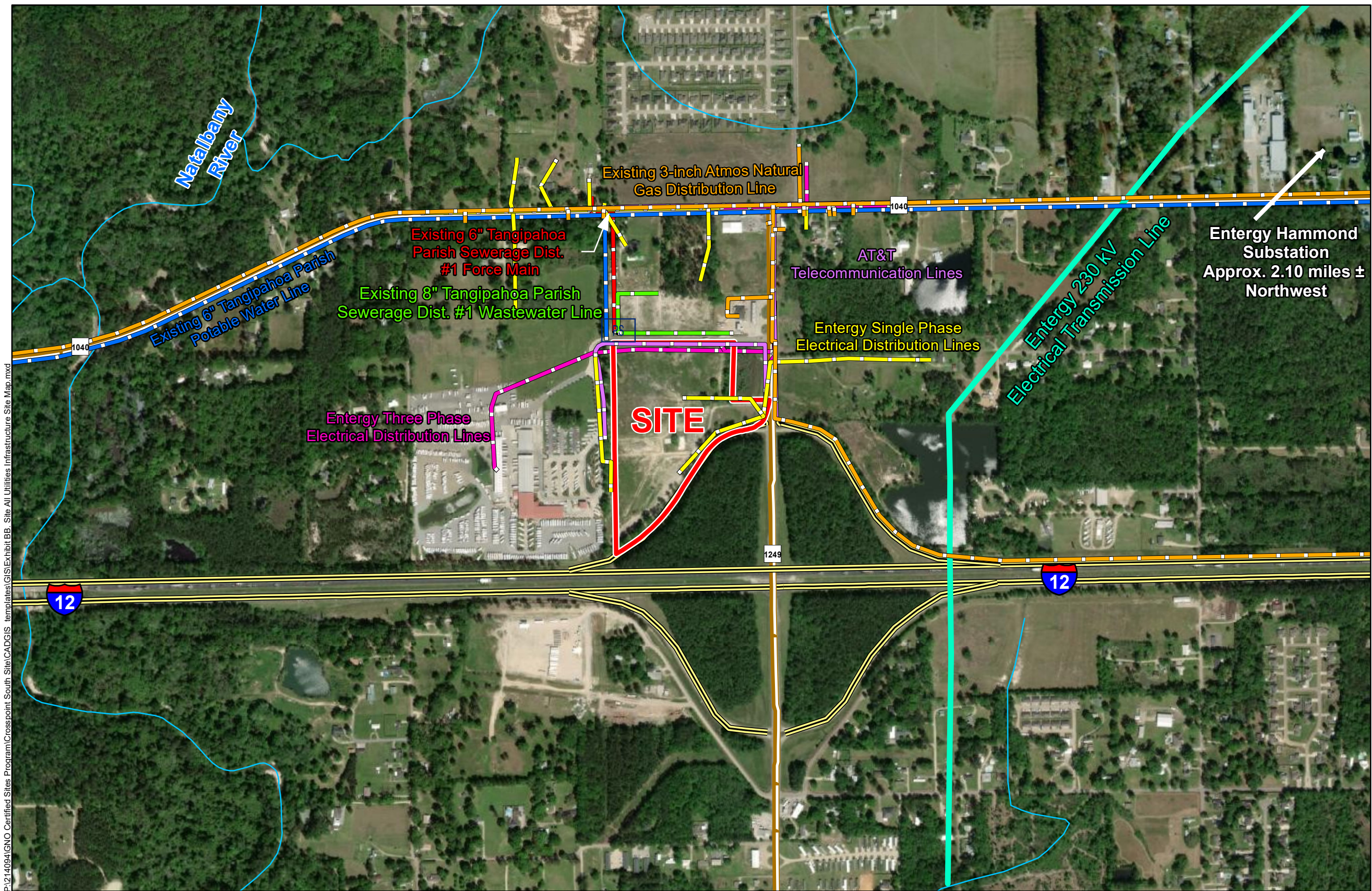
Crosspoint South Site

All Utilities Infrastructure Map



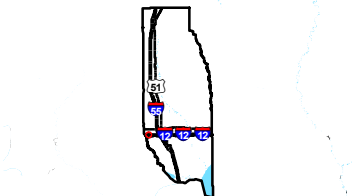
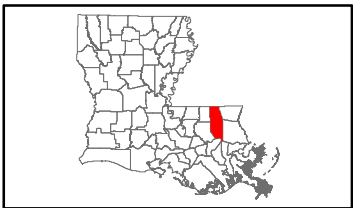
GREATER NEW ORLEANS
INC
REGIONAL ECONOMIC DEVELOPMENT

Crosspoint South Site All Utilities Infrastructure Map



Crosspoint South Site
Tangipahoa Parish, LA

GNO



Tangipahoa Parish

- Existing Atmos 3-inch Natural Gas Distribution Line
- Entergy Single Phase Electrical Distribution Lines
- Existing AT&T Telecommunication Lines
- Existing 6" Tangipahoa Parish Potable Water Line
- Entergy Three Phase Electrical Distribution Lines
- Site Boundary (19.94 Ac.)
- Existing 8" Tangipahoa Parish Sewerage Dist. #1 Wastewater Line
- Existing 6" Tangipahoa Parish Sewerage Dist. #1 Force Main
- PS Existing Tangipahoa Sewerage Dist. #1 Pump Station
- Entergy 230kV Electrical Transmission Line
- Existing Roadway**
 - Interstate
 - Rural State Highway
 - Local Roads
 - Stream



Date: 1/22/2021
Project Number: 214094
Drawn By: SEW
Checked By: EEB

General Notes:
1. No attempt has been made by CSRS, Inc. to verify site boundary, title, actual legal ownership, deed restrictions, servitudes, easements, or other burdens on the property, other than that furnished by the client or his representative.
2. Transportation data from 2013 TIGER datasets via U.S. Census Bureau at ftp2.census.gov/geo/tiger/TIGER2013.
3. 2015 aerial imagery from USDA-APFO National Agricultural Inventory Project (NAIP) and may not reflect current ground conditions.
4. Utility information from visual inspection and/or the individual utility operators. Exact field location has not been determined by survey. The lines shown are an approximate representation only and may have been offset for depiction purposes.



Scale 1:8,093
0 430 860 Feet

CSRS