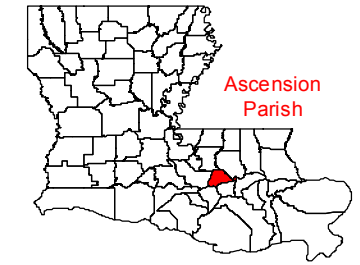


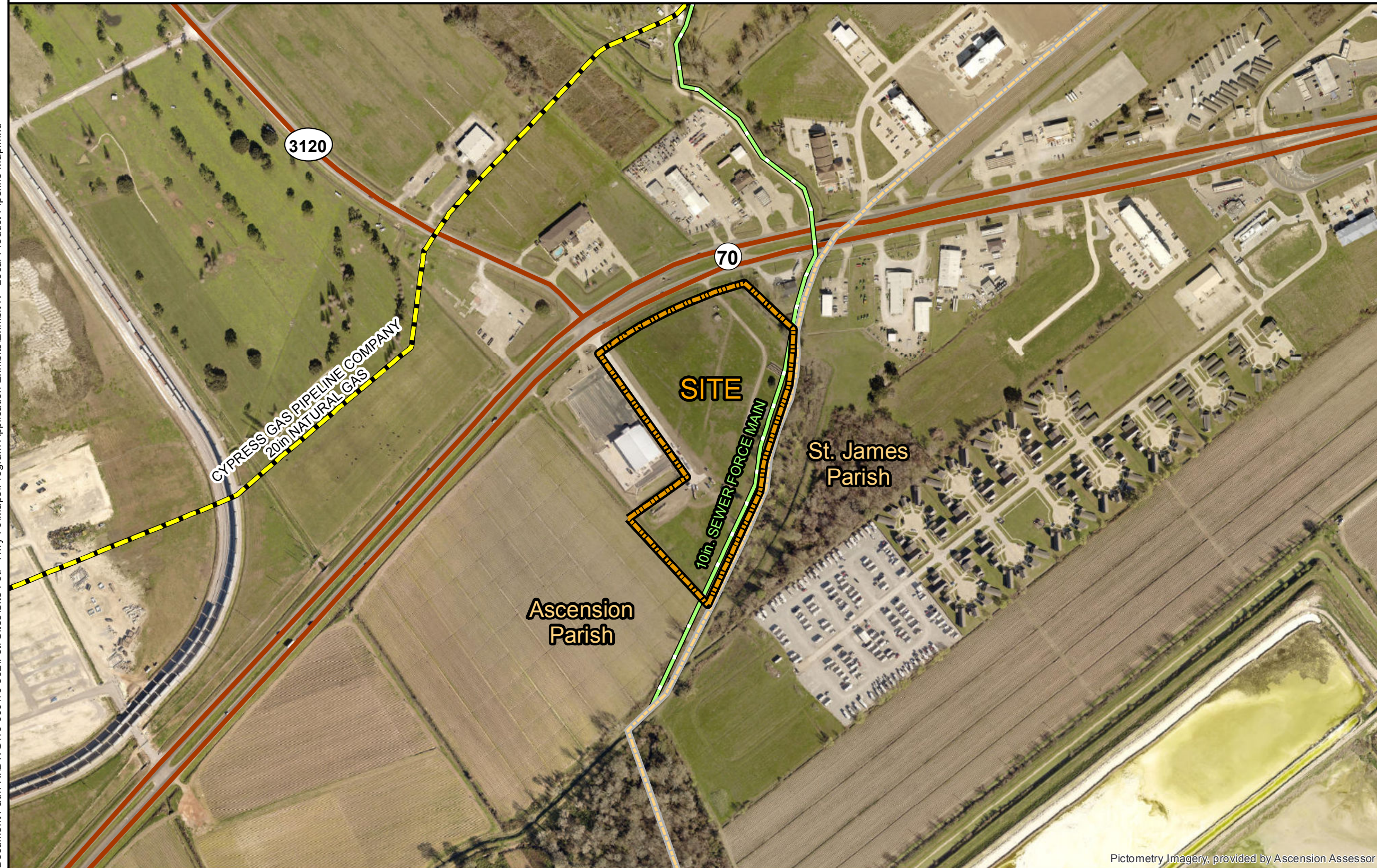
Exhibit K. Foti - Highway 70 Local Product Pipelines Map



Foti - Highway 70 Local Product Pipelines Map



Document Path: R:\DWG\16-000\16-392\Foti Sites\Foti - Hwy 70\Maps\Program Application Exhibits\Exhibit K - Local Product Pipeline Map.mxd



LEGEND

- Foti - Highway 70 (± 13.17 Ac.)
- Parish Boundary
- Pipeline Commodity**
- Natural Gas
- Sewer Force Main
- Existing Roadway**
- Highway

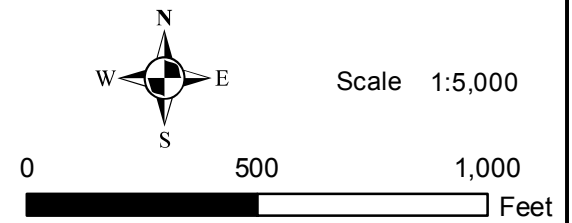


SITE NAME: Foti - Highway 70	
Drawn By:	CDS
Checked By:	GJB
Date:	12/15/2017

General Notes:

1. The information presented herein was obtained from various resources and should be considered preliminary.
2. No attempt has been made by Duplantis Design Group, PC to verify site boundary, title, actual legal ownership, deed restrictions, servitudes, easements, or other burdens on the property.
3. The utility lines shown are an approximate representation only and may have been offset for depiction purposes. Exact field location has not been determined by survey.

- References:**
1. 2017 Aerial imagery from Ascension Parish Assessors website
 2. Site boundary from Riverlands Surveying Company
 3. Transportation data from U.S. Census Bureau
 4. Pipeline data from National Pipeline Mapping System (NPMS)
 5. Utility information from visual inspection and/or the individual utility operators



Pictometry Imagery, provided by Ascension Assessor

8352 Bluebonnet Blvd.
Baton Rouge, LA 70810
Phone: 225-751-4490
www.ddgpc.com